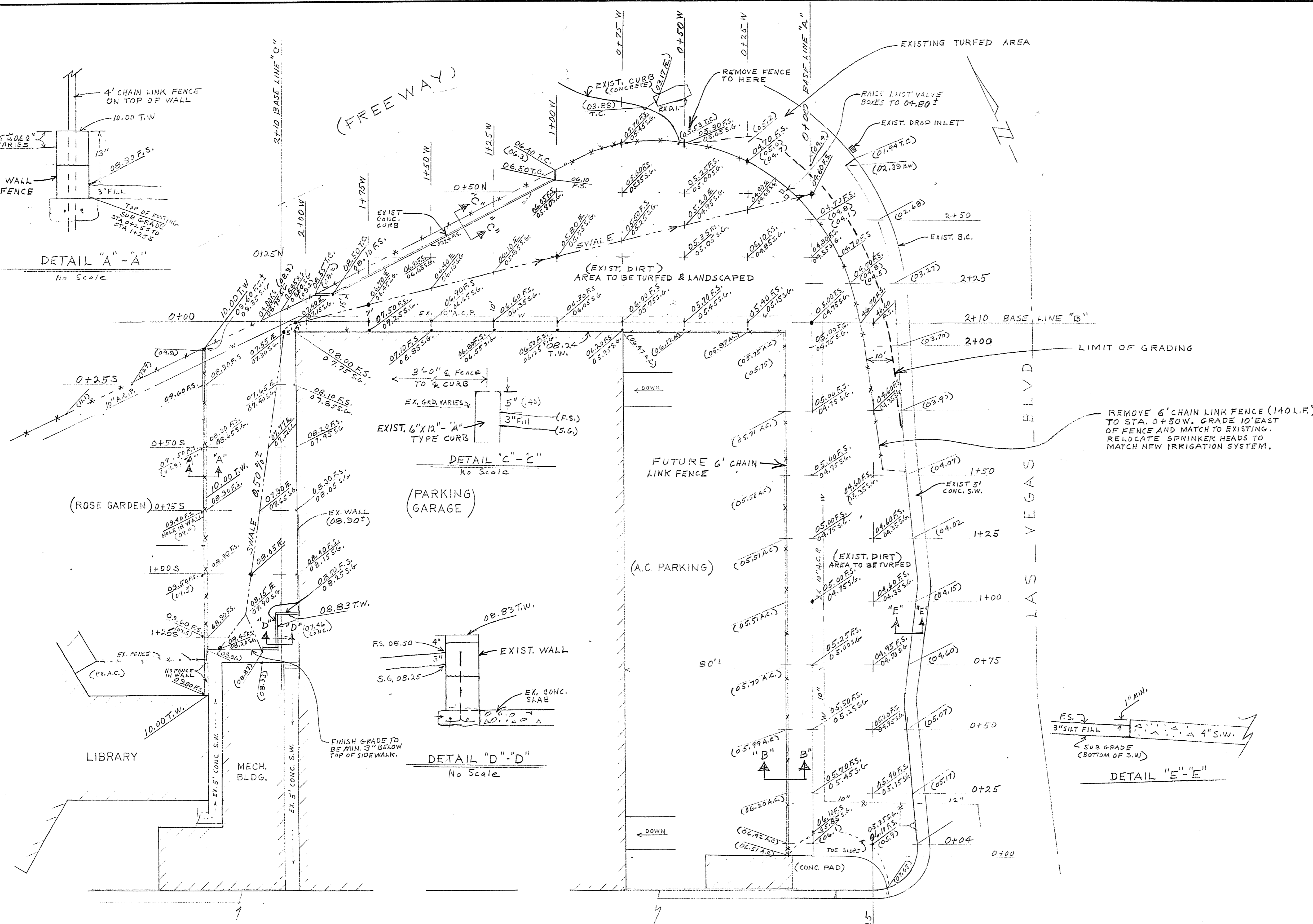
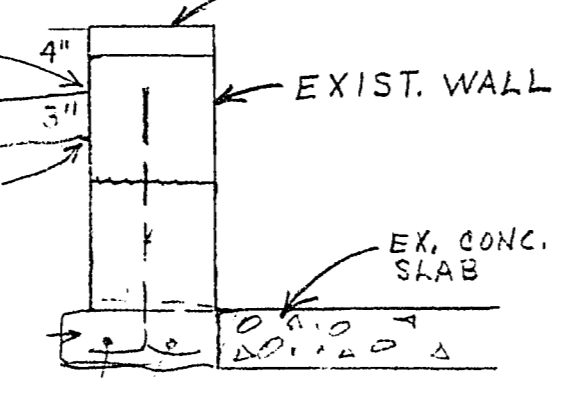


DETAIL "A"-A"  
No Scale

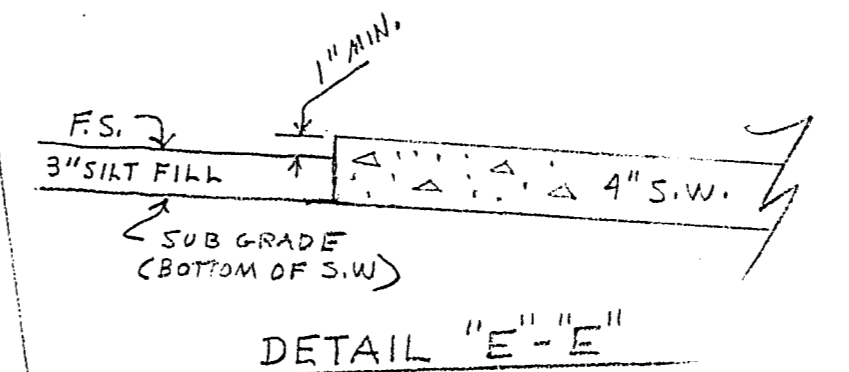
(FREEWAY)



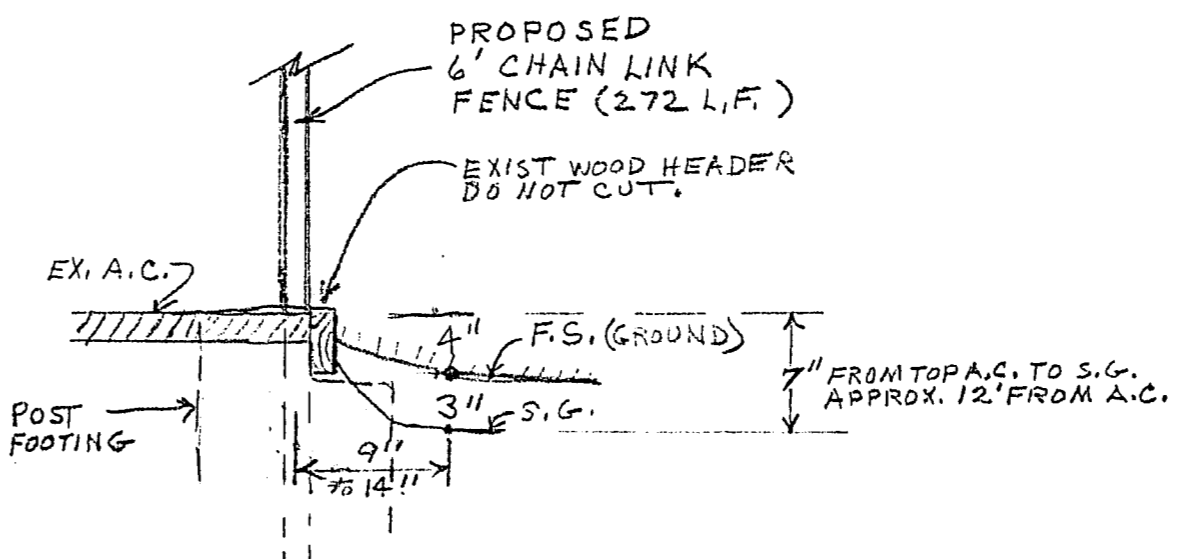
DETAIL "C"-C"  
No Scale



DETAIL "D"-D"  
No Scale



DETAIL "E"-E"  
No Scale



DETAIL "B"-B"  
No Scale

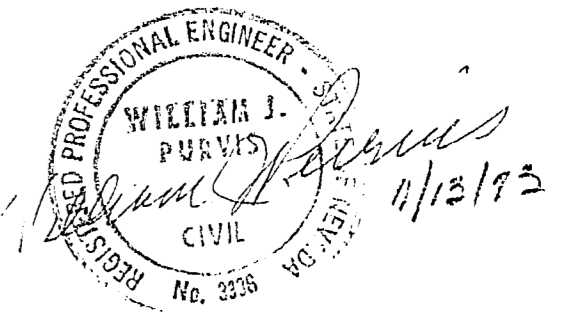
- AREA TO BE LANDSCAPED
- 25,600 S.F. OR 0.56 ACRE OR 2,845 S.Y.
  - 3" SILT FILL - 236 C.Y.
  - AREA TO BE TURFED. - 0.56 ACRE

- QUANTITIES - (APPROX.)
- CUT TO FINISH GRADE (F.S.) - 144 C.Y.
  - 3" CUT TO SUB-GRADE (S.G.) - 236 C.Y.
  - TOTAL CUT (EXCAVATION) - 380 C.Y.
  - 3" SILT FILL - 236 C.Y.

BENCH MARK  
C.I.V. B.M. # NSHD-BRASS CAP  
NE COR. MESQUITE & I.V. BLVD.  
ELEV. - 2004.48

- LEGEND
- EXIST. ELVs. - IN PARENTH. (OS.9)
  - F.S. - Finish Surface Design Elev.
  - T.C. - Top of Curb.
  - T.W. - Top of Wall.
  - A.C. - Asphalt Concrete Surface.
  - S.G. - Sub Grade (3" below F.S.)

APPROVAL *[Signature]* DATE 11/13/73  
PARKS DEPT  
APPROVAL \_\_\_\_\_ DATE \_\_\_\_\_



CITY OF LAS VEGAS NEVADA DEPARTMENT OF PUBLIC WORKS SERVICES DIVISION			
GRADING PLAN NORTH PORTION - CITY HALL			
W.O. NO. 3222	F.B.K. NO. 71-4XA	DATE	DRAWING NO.
SC. (H) 1"=20'	SC. (V)	11-13-73	521-90
DES. P. McGonegle		9-7-73	FILE NO.
DR. Ellison		11-13-73	
APPROVED BY DIRECTOR OF PUBLIC WORKS <i>[Signature]</i>			
			SHEET 1 OF 1