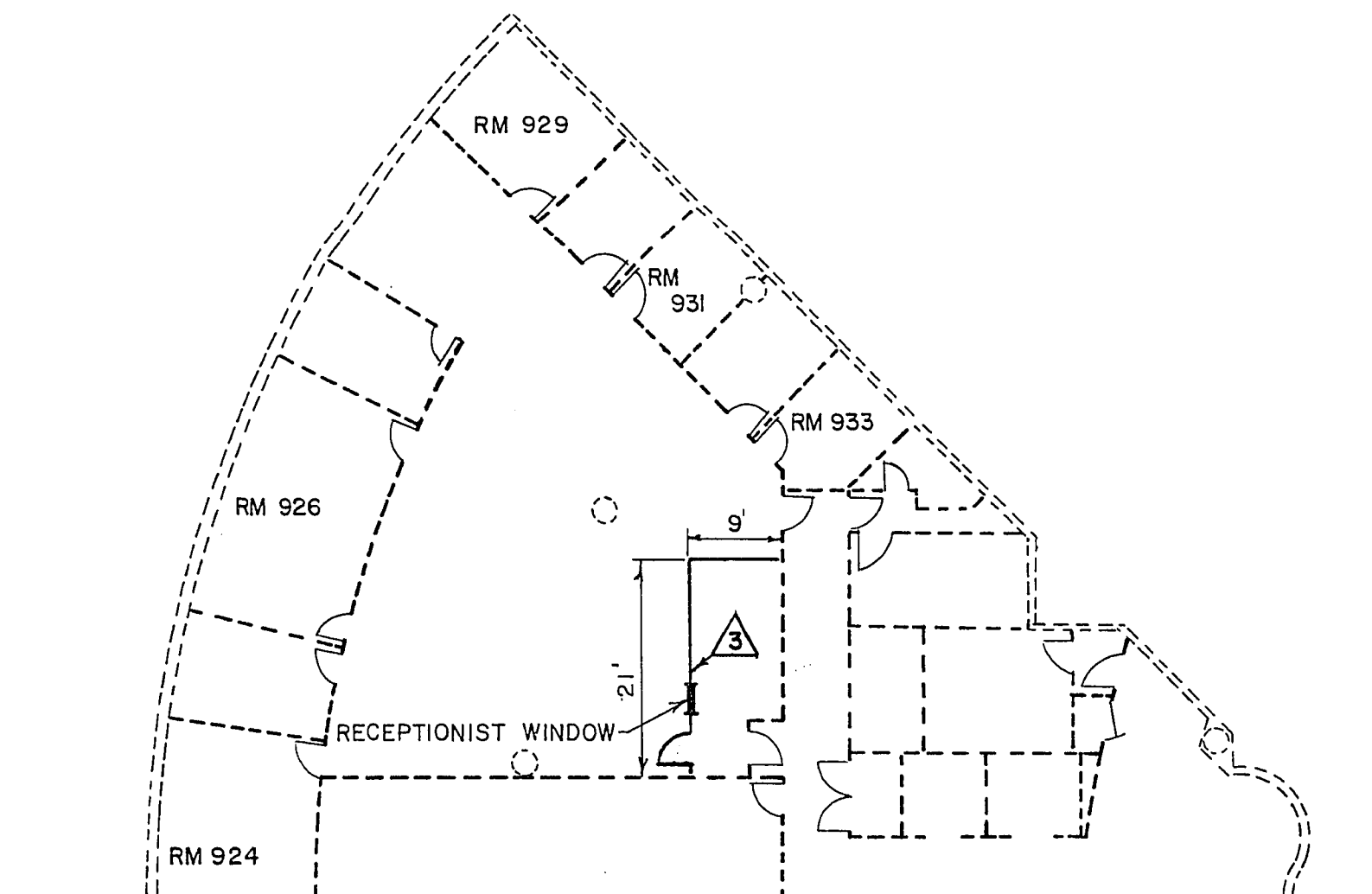


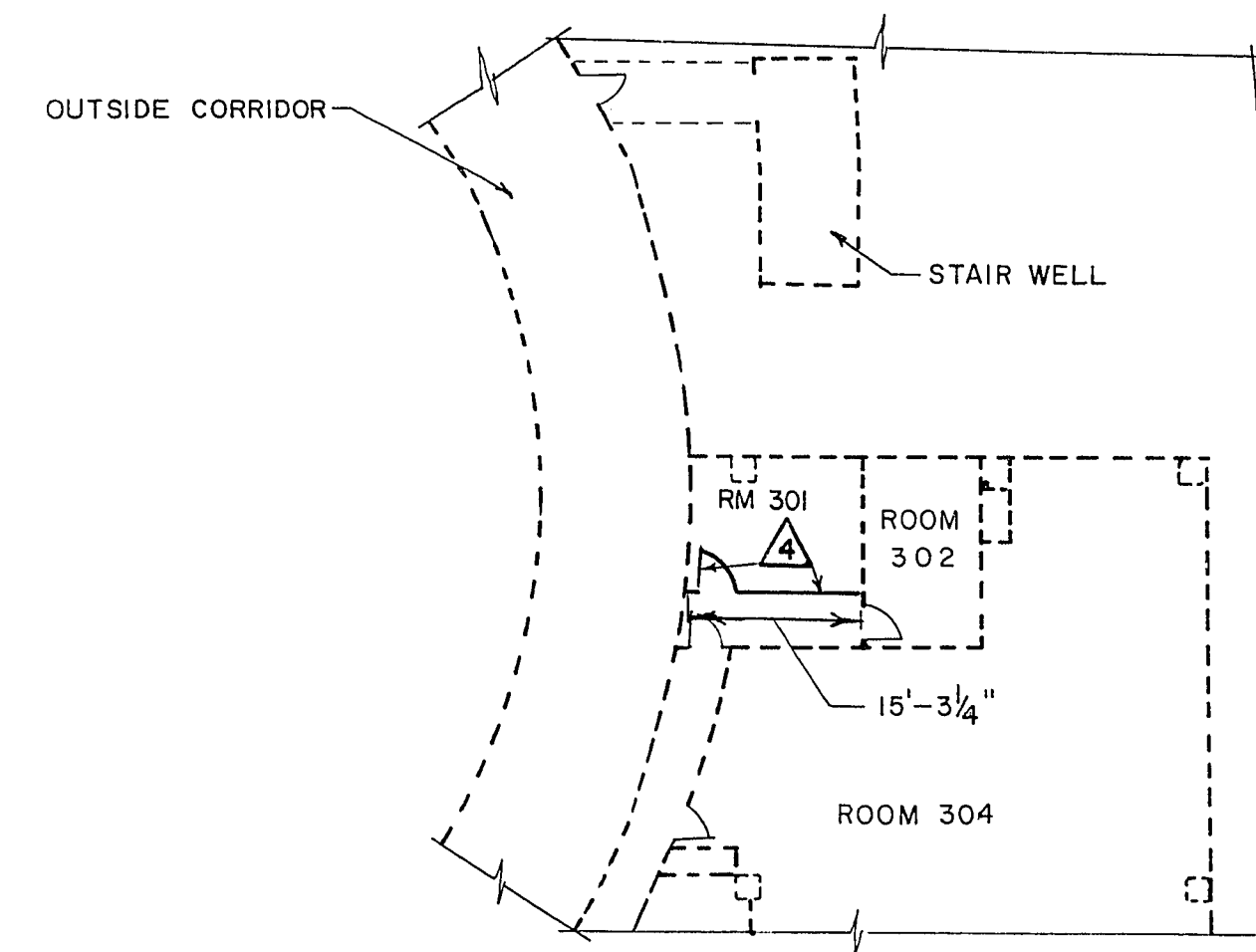
CITY HALL - 3rd. FLOOR EAST WING

JOB #1 - BUILDING & SAFETY DEPT.



CITY HALL - 9th FLOOR WEST WING

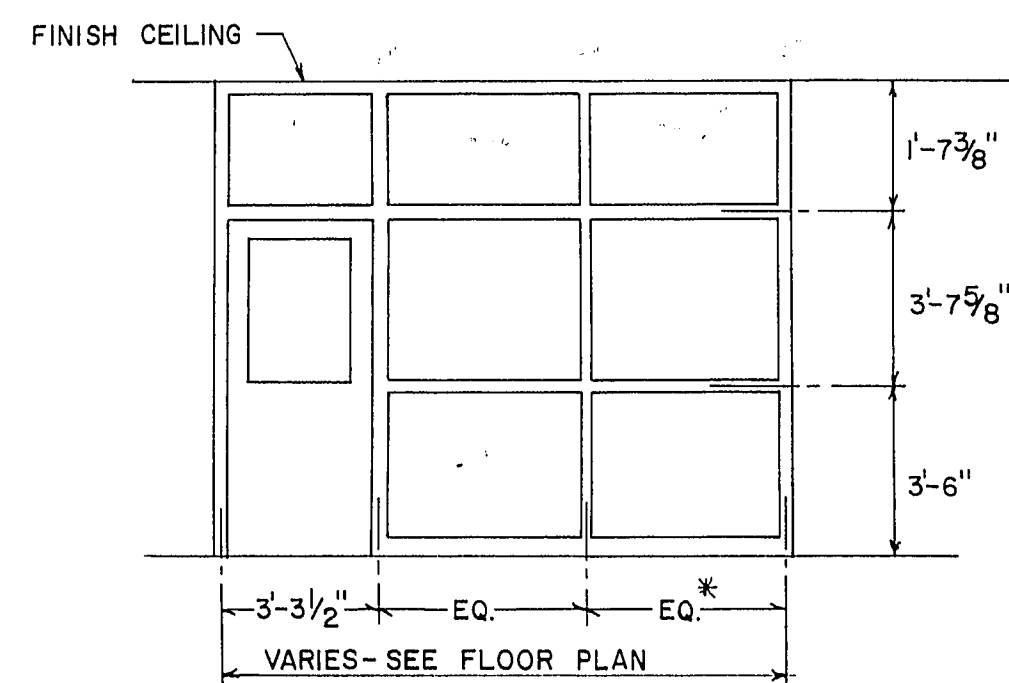
JOB #3 - CITY ATTORNEY



POLICE BUILDING - 3rd FLOOR

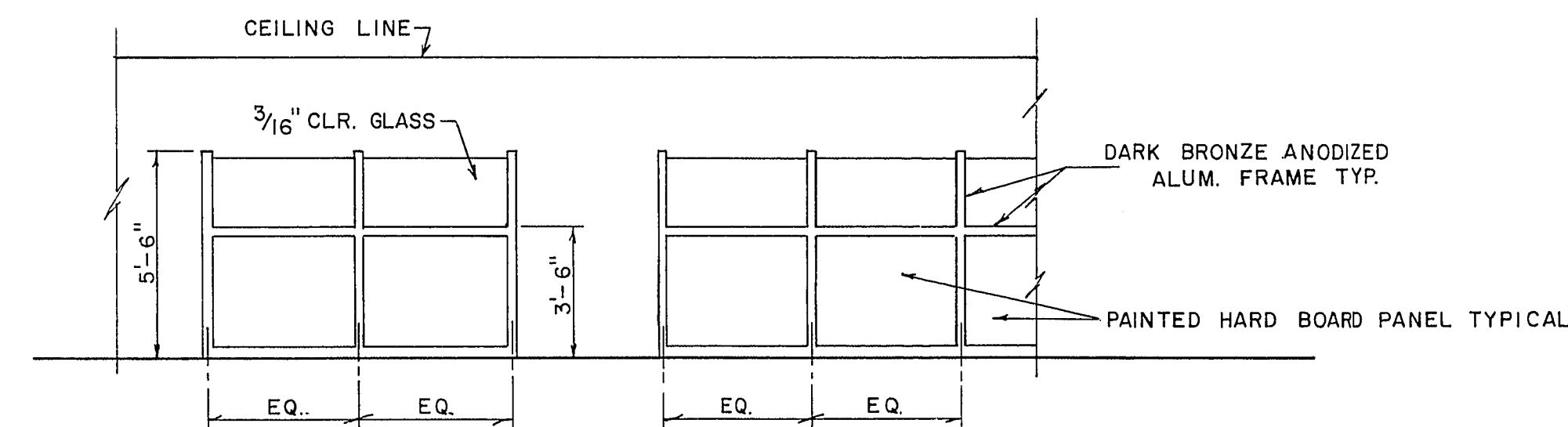
JOB #2 - POLYGRAPH EXAMINER'S ROOM

- ① REMOVE ONE PANEL OF 5'-6" MOVABLE PARTITION AS PER INSTRUCTIONS OF DIRECTOR OF BUILDING & SAFETY
- ② REMOVE EXISTING 5'-6" PARTITION & INSTALL A NEW 5'-6" PARTITION AS PER CONTRACT SPECIFICATIONS & THIS DRAWING
- ③ INSTALL FLOOR TO CEILING TYPE PARTITIONS WITH DOOR & RECEPTIONIST WINDOW AS PER THIS DRAWING & CONTRACT SPECIFICATIONS
- ④ INSTALL FLOOR TO CEILING TYPE PARTITIONS WITH DOOR AS PER THIS DRAWING & CONTRACT SPECIFICATIONS.

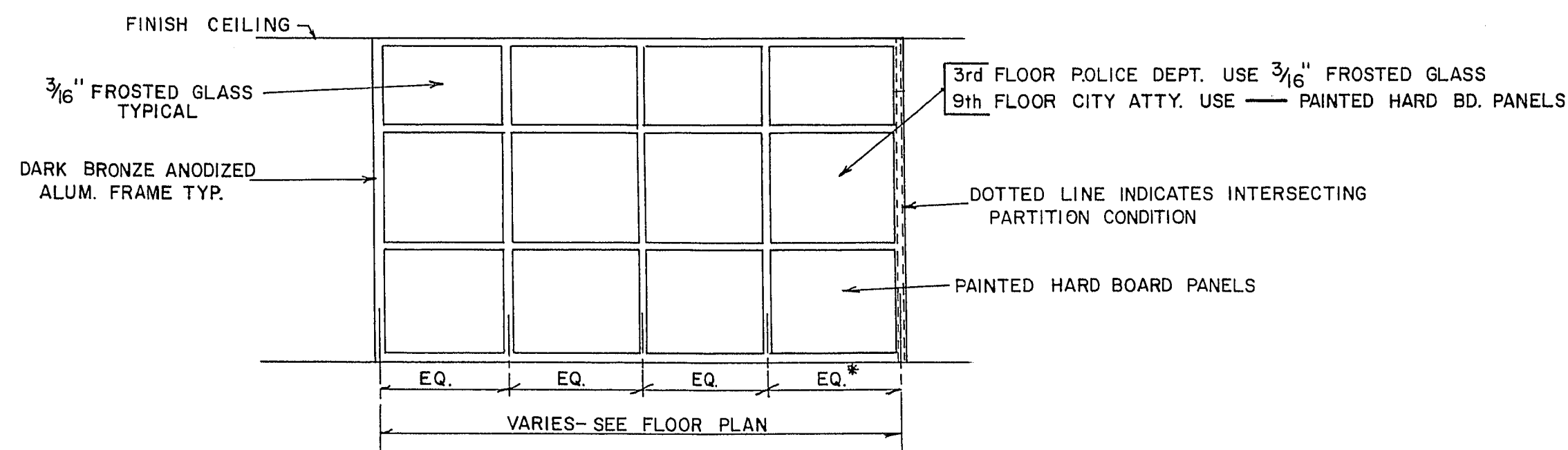


TYPICAL ELEVATION AT DOOR

FLOOR TO CEILING MOVABLE PARTITION



ELEVATION - 5'-6" MOVABLE PARTITION



TYPICAL ELEVATION

FLOOR TO CEILING MOVABLE PARTITION

* PANEL WIDTH VARIES 4'-3" MAX. '2'-0" MIN. FILLER PANELS - 8" MIN.

CITY OF LAS VEGAS NEVADA			
DEPARTMENT OF PUBLIC WORKS			
SERVICES DIVISION			
DURA-WALL PARTITIONS			
CITY HALL OFFICES			
W.O. NO. 3188 (5470)	F.B.K. NO. —	DATE	DRAWING NO.
SC. (H) NONE	SC. (V) —	1-2-74	521-V92
DES.			FILE NO.
DR. C.K.			
APPROVED BY DIRECTOR OF PUBLIC WORKS			SHEET OF