

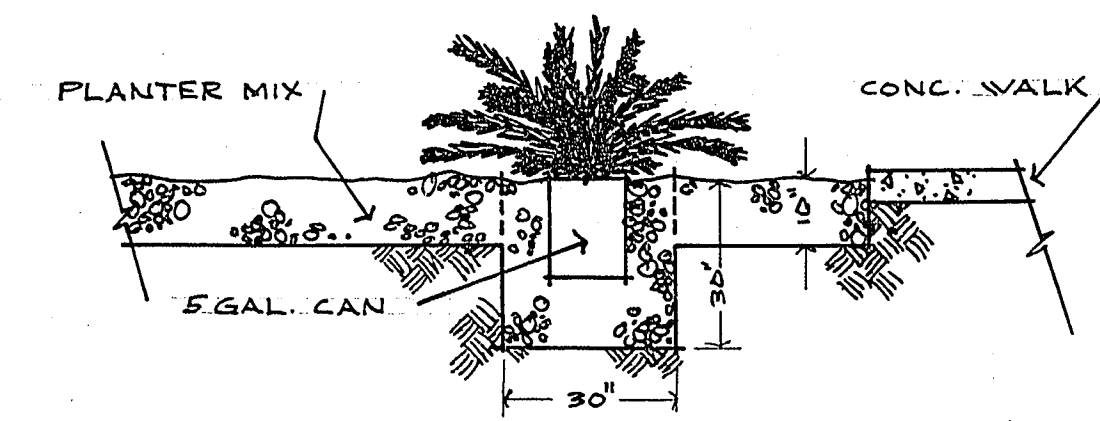
APPROXIMATE QUANTITIES - THIS SHEET

ITEM NO.	DESCRIPTION	UNIT	QUAN.
450.000	PLANTER MIX	CY	225
450.205	FRUITLESS OLIVE - 5" CAL.	EA	7
450.303	ARIZONA ASH - 3" CAL.	EA	7
450.305	ARIZONA ASH - 5" CAL.	EA	5
450.400	ALEPPO PINE 12'-15'	EA	14
450.500	SCANDIA JUNIPER - 5 GAL.	EA	70
450.600	ROSEMARY - 1 GAL.	EA	252
450.700	SILT FILL	CY	109
450.800	GRASS SEEDING	SF	1092

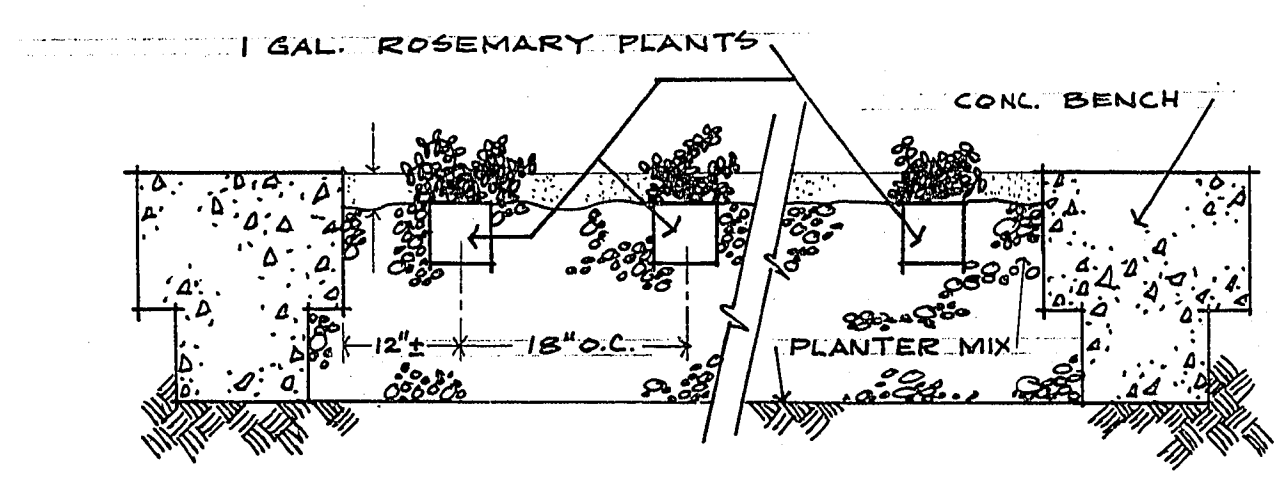
- NOTES :**
1. CONTRACTOR TO PROVIDE PLANTER MIX & SILT FILL IN AREAS AS INDICATED ON DRAWINGS (SEE SHTS. 4 & 5)
 2. CONTRACTOR TO PLANT ALL TREES AS PER UNIFORM STANDARD SPECIFICATIONS, SEC. 450.
 3. CONTRACTOR TO PLANT SCANDIA JUNIPER AS PER DETAIL THIS SHEET.
 4. CONTRACTOR TO PLANT ROSEMARY IN ALL 3 RAISED PLANTERS AT 18" O.C. AS PER DETAIL THIS SHEET.
 5. CONTRACTOR TO SEED GRASS AREAS AS INDICATED ON THIS DRAWING AS PER WRITTEN SPECIFICATIONS.

LEGEND

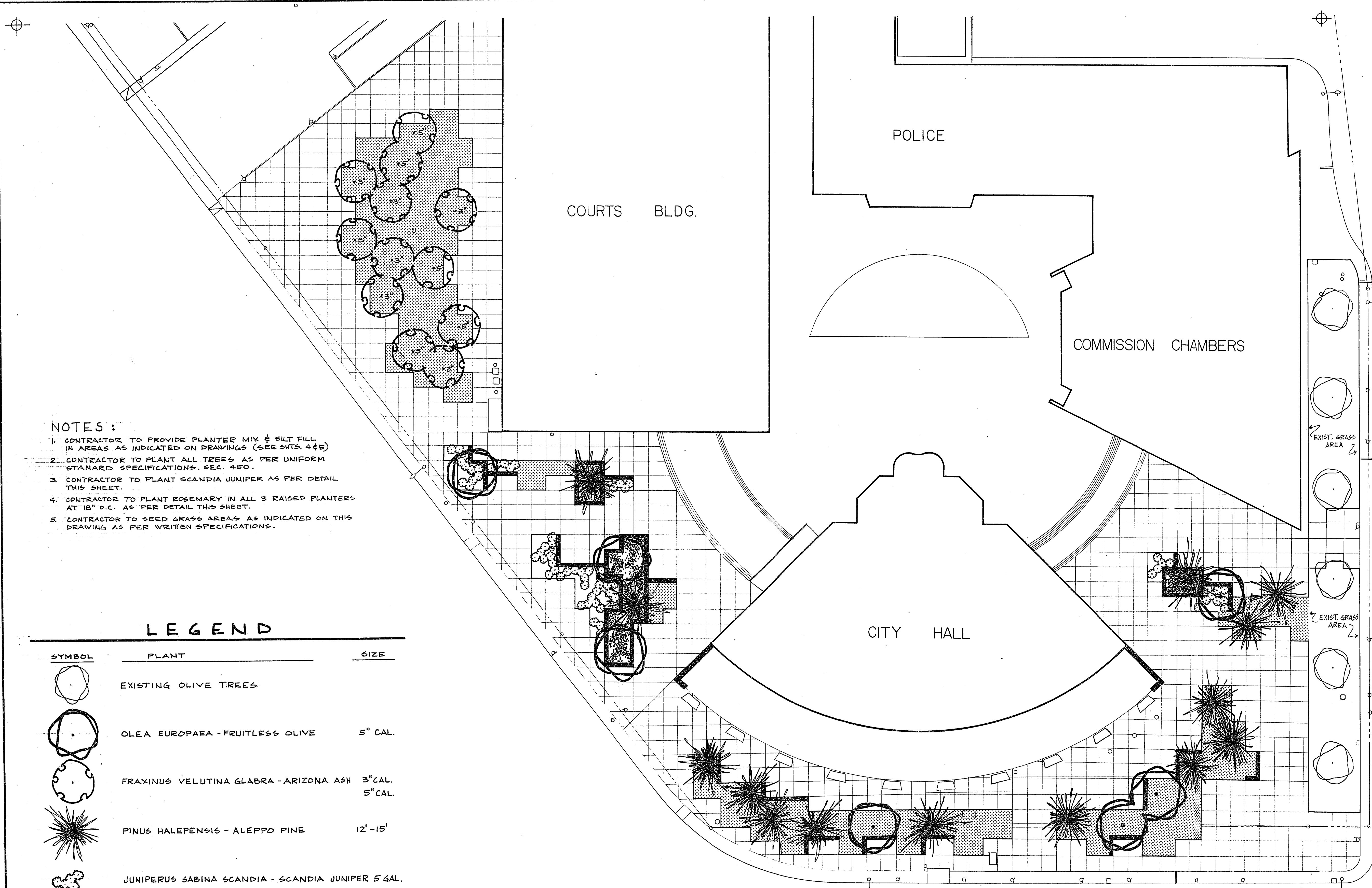
SYMBOL	PLANT	SIZE
	EXISTING OLIVE TREES	
	OLEA EUROPAEA - FRUITLESS OLIVE	5" CAL.
	FRAXINUS VELUTINA GLABRA - ARIZONA ASH	3" CAL. 5" CAL.
	PINUS HALEPENSIS - ALEPPO PINE	12'-15'
	JUNIPERUS SABINA SCANDIA - SCANDIA JUNIPER 5 GAL.	
	ROSMARINUS OFFICINALIS PROSTRATUS - ROSEMARY (IN RAISED PLANTERS 18" O.C.)	1 GAL.
	GRASS AREA	



JUNIPER PLANTING DETAIL
NO SCALE

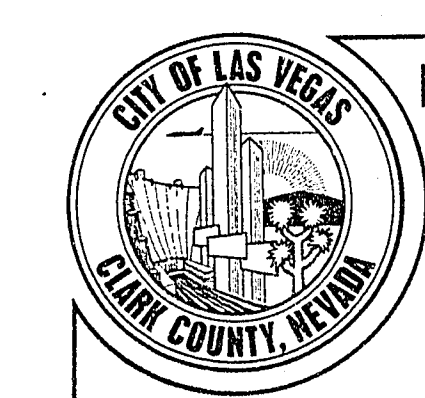


ROSEMARY PLANTING DETAIL
NO SCALE



CONTRACT DRAWING
NOV 22 1974

R. Ruegge
APPROVED: DIR. - DEPT. OF PARKS AND CEMETARY DATE 11/12/74



Department of Public Works
Engineering Division

**PLANTING PLAN
FOR
CITY HALL LANDSCAPING**

scale (h) 1"=20'	scale (v) —	drawing no.
w.o.no. 3260	f.bk.no.	521-101
design by R. RUEGGE	drawn by R. RUEGGE	date 10-4-74
approved by Director of Public Works	date 11/12/74	sh. 8 of 8