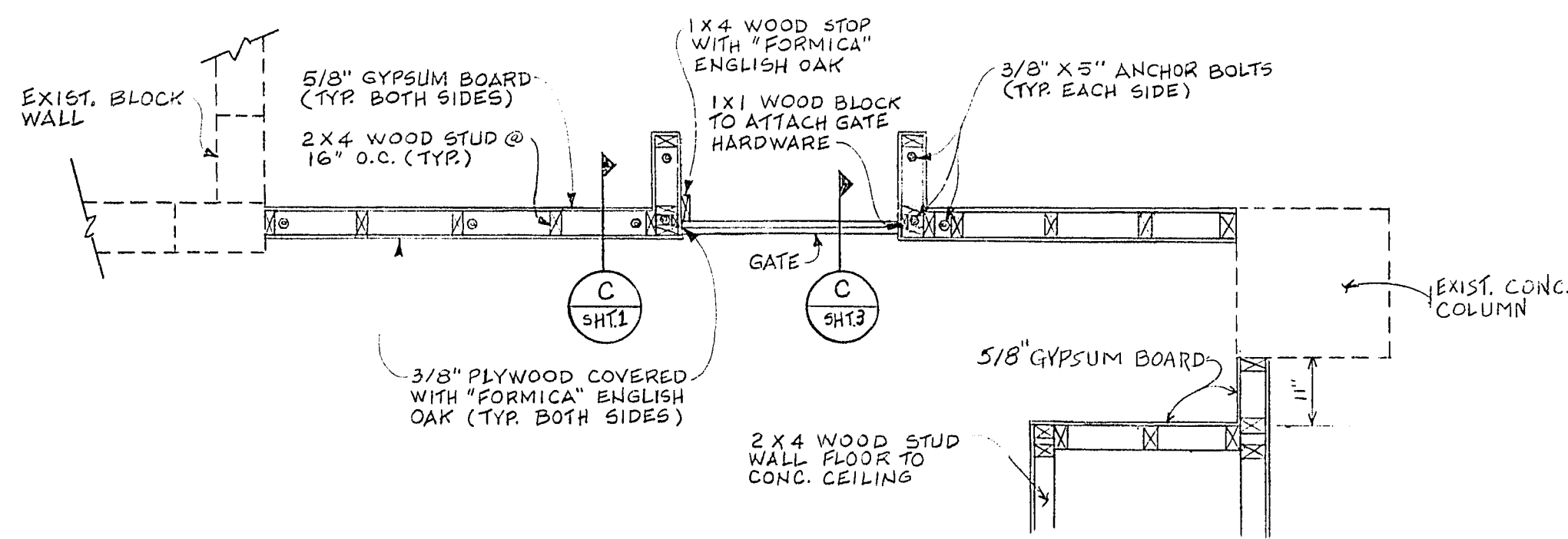
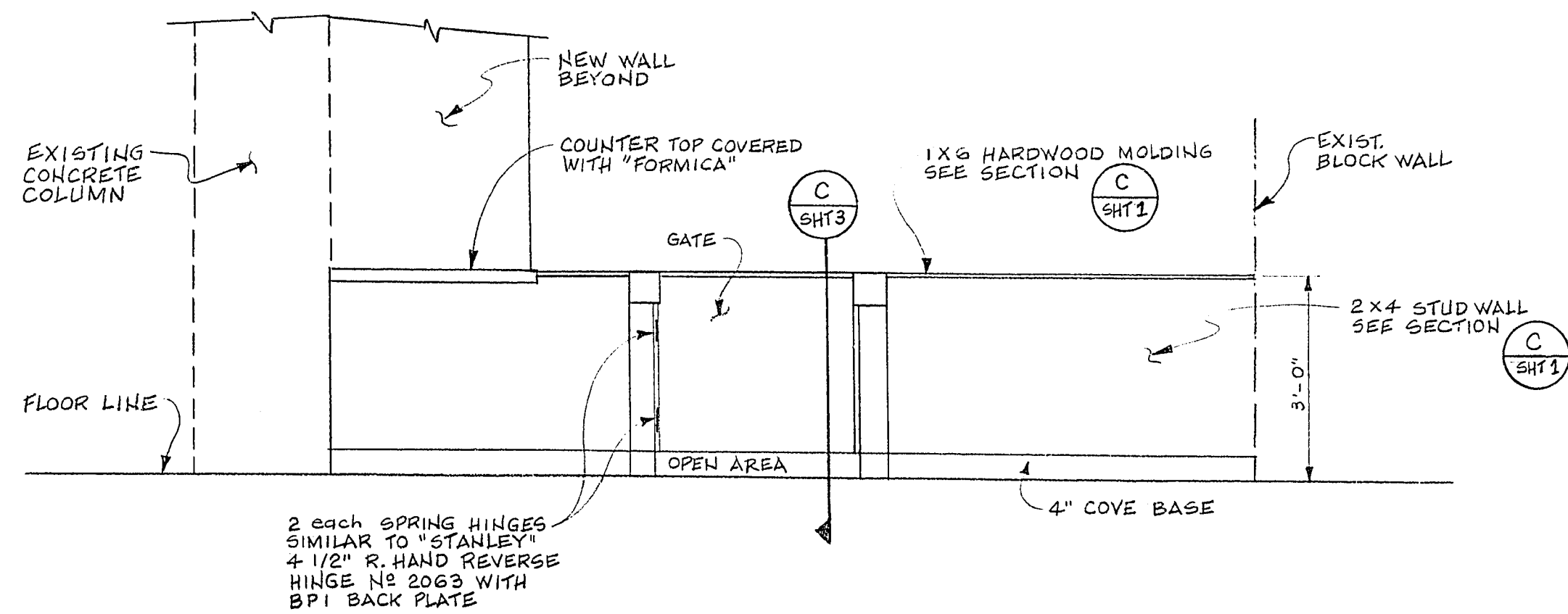


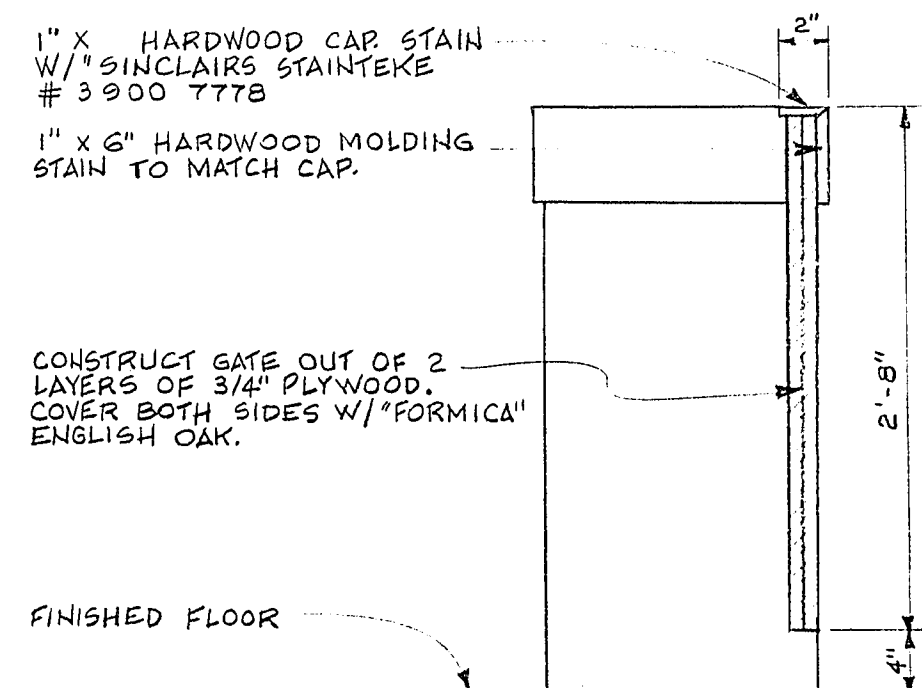
FRAMING DETAIL
EXTERIOR DOOR OPENING
SCALE: 1/2" = 1'-0"



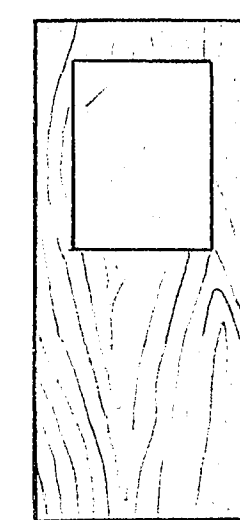
X-SECTION OF OFFICE ENTRY WALL
X-SECTION TAKEN FROM (A) (SHT.1)
SCALE: 1/2" = 1'-0"



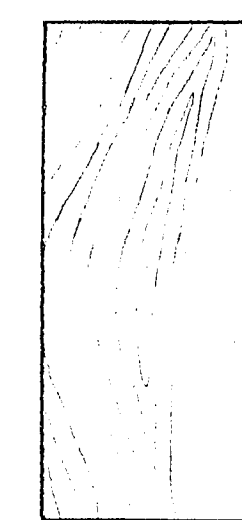
REAR ELEVATION OF OFFICE ENTRY WALL
SCALE: 1/2" = 1'-0"



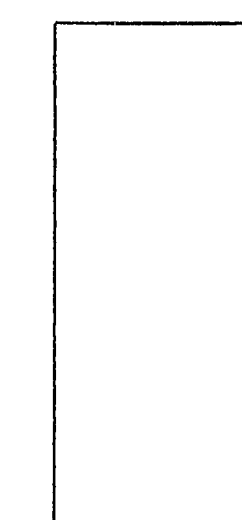
SECTION
SCALE: 1" = 1'-0"



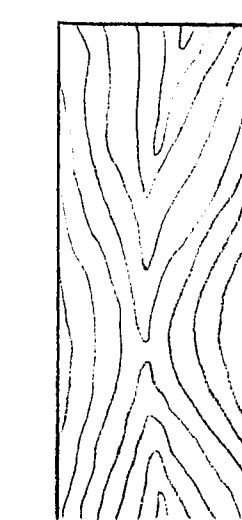
TYPE 1
SOLID CORE MARLITE DOOR W/ HALF LITE



TYPE 2
SOLID CORE MARLITE DOOR



TYPE 3
HOLLOW METAL DOOR



TYPE 4
SOLID CORE WOOD DOOR

FINISH SCHEDULE

| Room Number | Walls | | | | Floor | Base | Ceiling | Remarks |
|-------------|---------------------|-------------------------|---------------------|---------------------|---------------|-------|--------------------|---|
| | North | East | South | West | | | | |
| 1 | Marlite | Marlite | Marlite | Marlite | Iced Topaz | N/A | Drop In Acoustical | |
| 2 | See Remarks | Marlite | Marlite | Paint Color "Beach" | Iced Topaz | 503-P | Drop In Acoustical | East portion of north wall is Marlite. West portion to be painted. Color: Beach. |
| 3 | Marlite | Marlite | Marlite | | Iced Topaz | 503-P | Drop In Acoustical | |
| 4 | Marlite | Marlite | Marlite | | Iced Topaz | 503-P | Drop In Acoustical | |
| 5 | See Remarks | Marlite | Marlite | See Remarks | Iced Topaz | 503-P | Drop In Acoustical | Wallpaper. Manufacturer & style to be: "Artistry" Hacienda #FG-9137. Use "Undercover" wall lining on C.M.U. |
| 6 | See Remarks | Paint Color "Beach" | Marlite | Marlite | Iced Topaz | 503-P | Drop In Acoustical | See remarks Room #5. |
| 7 | Marlite | Marlite | Marlite | Marlite | Iced Topaz | N/A | Drop In Acoustical | |
| 8 | Marlite | Paint Color Russet Pear | Marlite | Marlite | Copper Luster | 518-P | Drop In Acoustical | |
| 9 | See Remarks | See Remarks | See Remarks | See Remarks | Brazil-nut | 598-P | Drop In Acoustical | For full height walls see remarks Room #5. For 3'-0" wall see Section "C" on sheet #1. |
| 10 | Marlite | See Remarks | See Remarks | Marlite | Iced Topaz | 503-P | Drop In Acoustical | For 3'0" high east wall see Section "C" on sheet #1. For C.M.U. south wall see remarks Room #5. |
| 11 | Marlite | See Remarks | See Remarks | Marlite | Iced Topaz | 503-P | Drop In Acoustical | See remarks Room #5. |
| 12 | Marlite | Marlite | Paint Color "Beach" | Marlite | Iced Topaz | 503-P | Drop In Acoustical | |
| 13 | Marlite | Marlite | Paint Color "Beach" | Marlite | Iced Topaz | 503-P | Drop In Acoustical | |
| 14 | Marlite | Marlite | Paint Color "Beach" | Paint Color "Beach" | Iced Topaz | 503-P | Drop In Acoustical | |
| 15 | Marlite | Marlite | Marlite | Marlite | Iced Topaz | N/A | Drop In Acoustical | |
| 16 | Paint Color "Beach" | Paint Color "Beach" | Paint Color "Beach" | Paint Color "Beach" | Iced Iced | 503-P | Drop In Acoustical | |

*Cove base called out is for walls other than Marlite. For Marlite walls use standard black.

FINISH SPECIFICATIONS

CARPET: Manufacturer: "Collins & Aikman", "Profile" Style #03001, 18" x 18" carpte tiles
Colors: As shown on Finish Schedule

COVE BASE: Manufacturer: "Burke"
Colors: #503-P, #518-P, #598-P

PAINT: Manufacturer: "Sinclair Paints"
Colors: Beach, Russet Pear 9C6

WALLPAPER: Manufacturer: "General Tire", Artistry Series
Style: Hacienda #FG-9137

DOOR SCHEDULE

| Door Number | Door Type | Door Size | | | Material | Remarks |
|-------------|---------------------|-----------|--------|--------|---------------|---------|
| | | Width | Height | Thick | | |
| 1 | 1 | 3'-0" | 7'-0" | 1-3/4" | Marlite Alum. | |
| 2 | 2 | 3'-0" | 7'-0" | 1-3/4" | Marlite Alum. | |
| 3,4,5 | 1 | 3'-0" | 7'-0" | 1-3/4" | Marlite Alum. | |
| 6 | 3 | 3'-0" | 7'-0" | 1-3/4" | Steel Steel | |
| 7-13 | 1 | 3'-0" | 7'-0" | 1-3/4" | Marlite Alum. | |
| 14 | 4 | 3'-0" | 7'-0" | 1-3/4" | Wood Steel | |
| 15 | See Detail 1 Sht. 2 | 3'-0" | 2'-0" | 1-1/2" | Wood Wood | |

W.U. 2163

Scale (H) AS SHOWN Scale (V) AS SHOWN

Fid. bk. no. N/A Date JULY 1982

Design by OAS CONCEPT

Drawn by NORMA GOMEZ, S. M. S. 8-23-82

CITY ENGINEER

Engineering Design Division

ROOM FINISH SCHEDULE,
DOOR SCHEDULE AND
STRUCTURAL DETAILS

Department of Public Services

CAFETERIA REMODELING

Drawing no. 521-115B

12-08