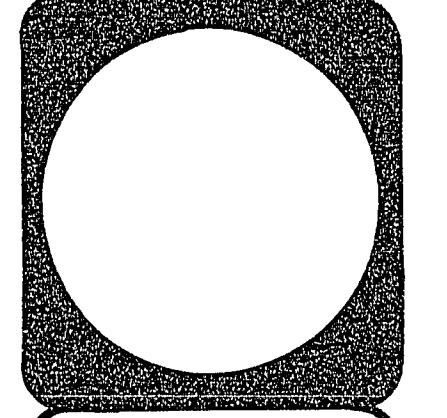




City of Las Vegas, Nevada
Department of Public Works
 ARCHITECTURAL SERVICES
 SCALE: 1/4" = 1'-0"
 DATE: 8-93
 DESIGN BY: FRANK TRUPIANO
 DRAWN BY: FRANK TRUPIANO

NO.	DATE	REVISIONS



WEST LAS VEGAS CITY HALL ANNEX
FLOOR PLAN AND SCHEDULES

PROJECT NO.
 DRAWING NO.
 513-57F
 SHEET OF 7

ROOM NO.	WALLS				DOOR FRAME	FLOOR	BASE	REMARKS
	NORTH	EAST	SOUTH	WEST				
1	PAINT	PAINT	PAINT	PAINT	PAINT	CARPET	RUBBER	
2	PAINT	PAINT	PAINT	PAINT	PAINT	CARPET	RUBBER	
3	PAINT	PAINT	PAINT	PAINT	PAINT	CARPET	RUBBER	
4	PAINT	PAINT	PAINT	PAINT	PAINT	CARPET	RUBBER	
5	PAINT	PAINT	PAINT	PAINT	PAINT	CARPET	RUBBER	
6	PAINT	PAINT	PAINT	PAINT	PAINT	CARPET	RUBBER	
7	PAINT	PAINT	PAINT	PAINT	PAINT	VINYL	RUBBER	
8	PAINT	PAINT	PAINT	PAINT	PAINT	VINYL	RUBBER	
9	PAINT	PAINT	PAINT	PAINT	PAINT	VINYL	RUBBER	
10	PAINT	PAINT	PAINT	PAINT	PAINT	CARPET	RUBBER	
11	PAINT	PAINT	PAINT	PAINT	PAINT	CARPET	RUBBER	
12	PAINT	PAINT	PAINT	PAINT	PAINT	CARPET	RUBBER	
13	PAINT	PAINT	PAINT	PAINT	PAINT	CARPET	RUBBER	PAINT EXIST. DOORS 12 AND 13
14	EXIST.	EXIST.	EXIST.	EXIST.	PAINT	EXIST.	EXIST.	
15	EXIST.	EXIST.	EXIST.	EXIST.	PAINT	EXIST.	EXIST.	
16	PAINT	PAINT	PAINT	PAINT	PAINT	CARPET	RUBBER	
17	PAINT	PAINT	PAINT	PAINT	PAINT	CARPET	RUBBER	

PAINT SCHEDULE

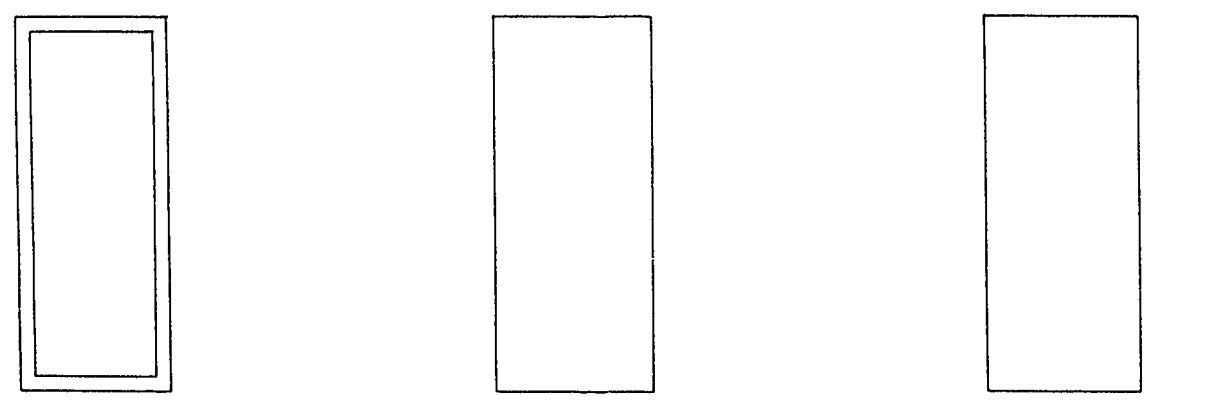
WALLS: "SINCLAIR" CM8511
 DOORS & FRAMES: "SINCLAIR" CM8509

GENERAL NOTES

ALL DIMENSIONS ARE TO FINISHED WALL SURFACE UNLESS NOTED OTHERWISE.

CONTRACTOR TO PATCH CONCRETE THAT THAT WILL BE REMOVED TO ACCOMMODATE NEW SINKS. SEE PLUMBING PLAN. CONCRETE PATCH TO MATCH EXISTING (28 DAY MINIMUM STRENGTH OF 2500 PSI, SMOOTH FINISH). PATCH TO BE 4" THICK REINFORCED WITH 6"X6" W2.1 X W2.1 WWF. ON 2" SAND WITH 10 MIL VISQUEEN AND 4" TYPE II GRAVEL BASE.

DOOR NO.	DOOR TYPE	WIDTH	HEIGHT	HARDWARE SET NO.	REMARKS
1	1	3'-0"	6'-10"	1	EXISTING STOREFRONT
2	1	3'-0"	6'-10"	1	EXISTING STOREFRONT
3	2	3'-0"	7'-0"	2	
4	2	3'-0"	7'-0"	3	
5	2	3'-0"	7'-0"	2	
6	2	3'-0"	7'-0"	2	
7	2	3'-0"	7'-0"	2	
8	2	3'-0"	7'-0"	2	
9	2	3'-0"	7'-0"	2	
10	2	3'-0"	7'-0"	2	
11	2	3'-0"	7'-0"	2	
12	3	3'-0"	6'-8"	EXIST.	EXISTING WOOD DOOR
13	3	3'-0"	6'-8"	EXIST.	EXISTING WOOD DOOR
14	2	3'-0"	7'-0"	2	
15	2	3'-0"	7'-0"	2	



DOOR TYPE NO. 1: EXISTING STORE FRONT DOOR
 DOOR TYPE NO. 2: NEW SOLID CORE WOOD DOOR
 DOOR TYPE NO. 3: EXISTING WOOD DOOR

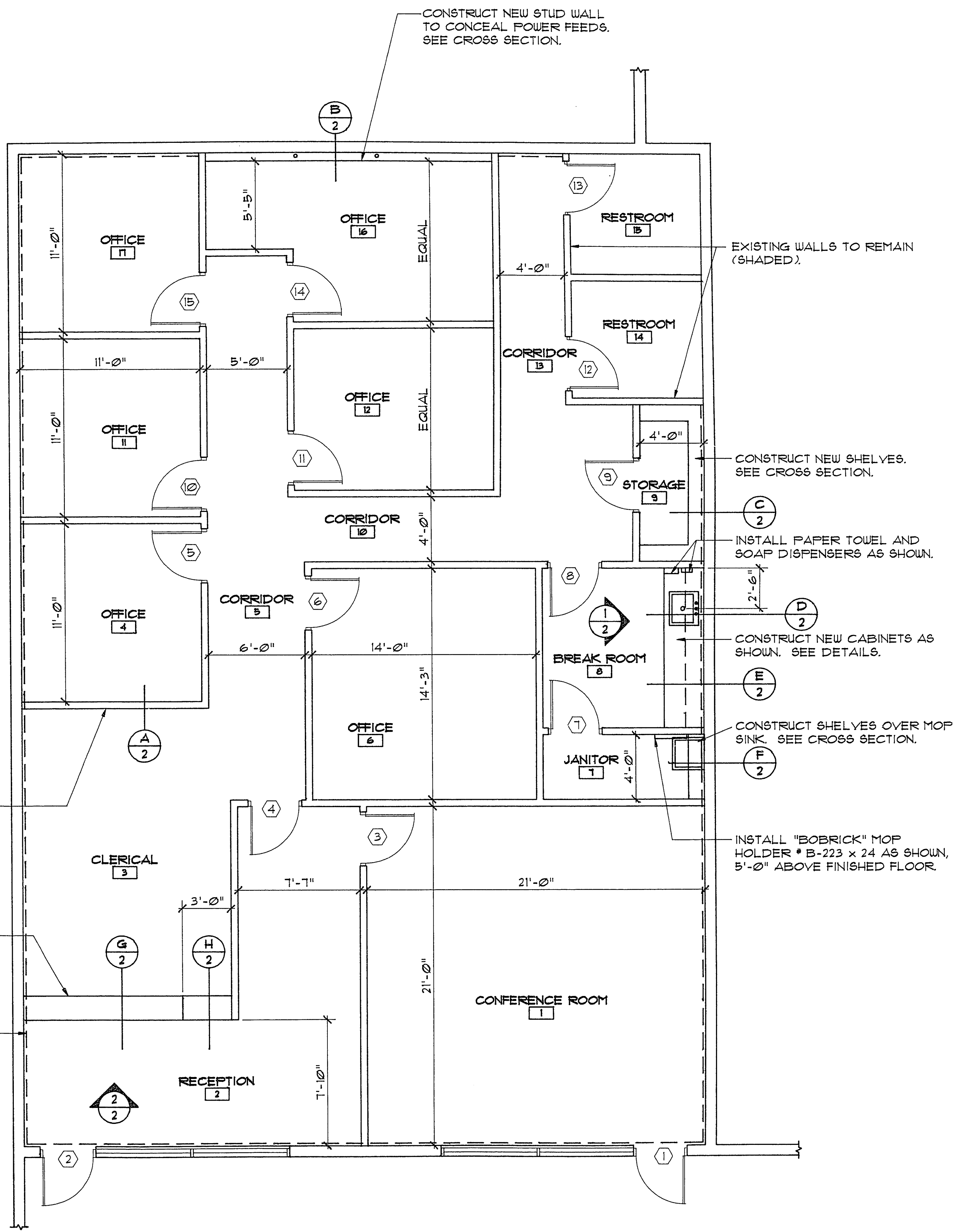
APPROVALS _____ DATE _____

Don A. [Signature] 8-27-93
 CITY ENGINEER
Carroll B. Bly 8/30/93
 INTERGOVERNMENTAL & COMMUNITY RELATIONS COORDINATOR
Larry K. Baxton 8/30/93
 DEPUTY CITY MANAGER

CONSTRUCT NEW STUD WALLS TYPICAL THROUGHOUT. SEE CROSS SECTION.

CONSTRUCT NEW COUNTER. SEE CROSS SECTION.

ALTERNATE NO. 1
 DASHED LINE INDICATES EXISTING CMU WALLS TO BE FURRED OUT. CONTRACTOR TO USE 1-1/2" METAL FURR STRIPS APPLIED VERTICALLY AT 24" O.C. INSTALL 5/8" GYP. BD. HORIZONTALLY OVER FURRING. FINISH GYP. BD. TO MATCH INTERIOR PARTITIONS.



FLOOR PLAN



Nucleus Plaza