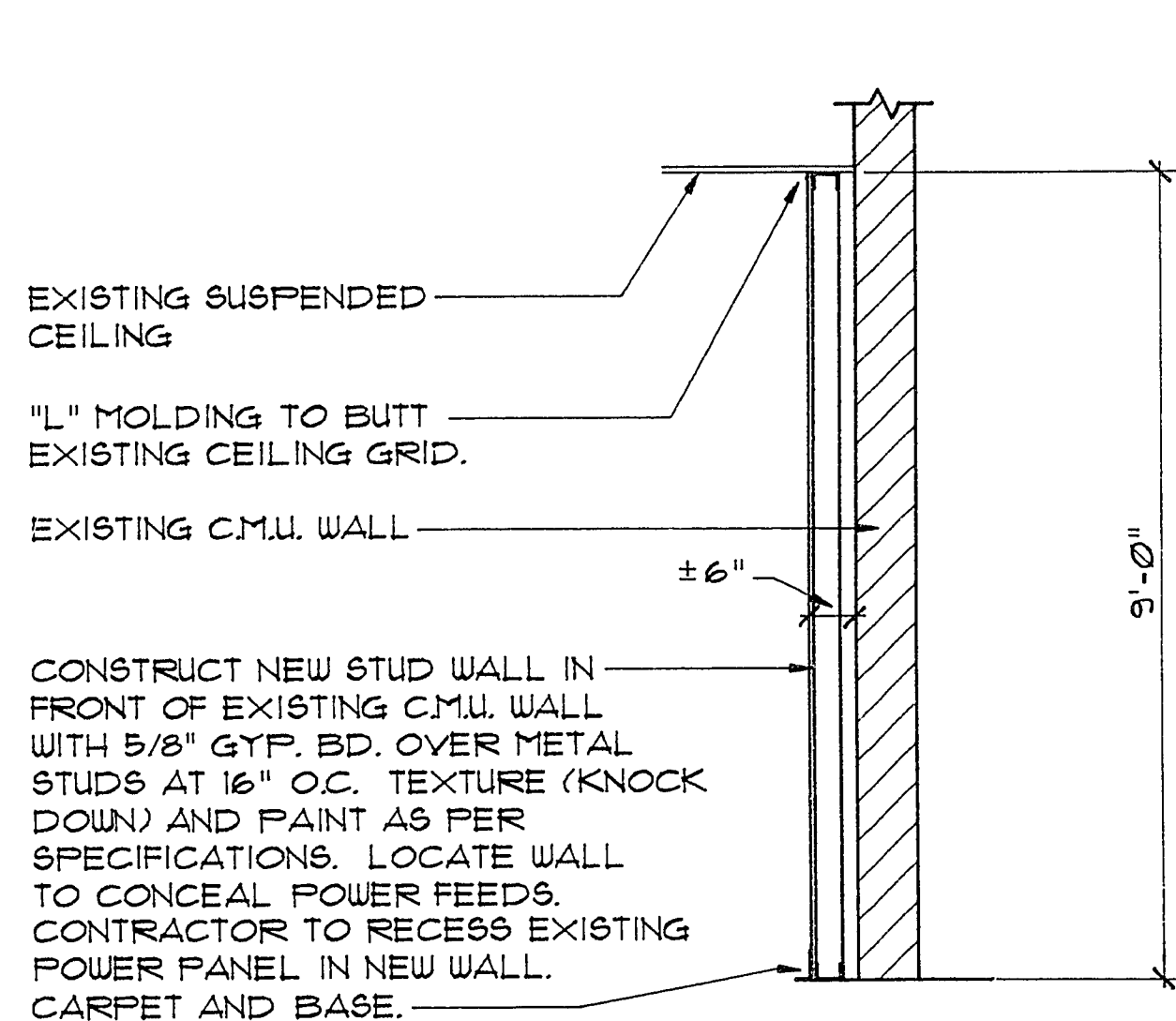
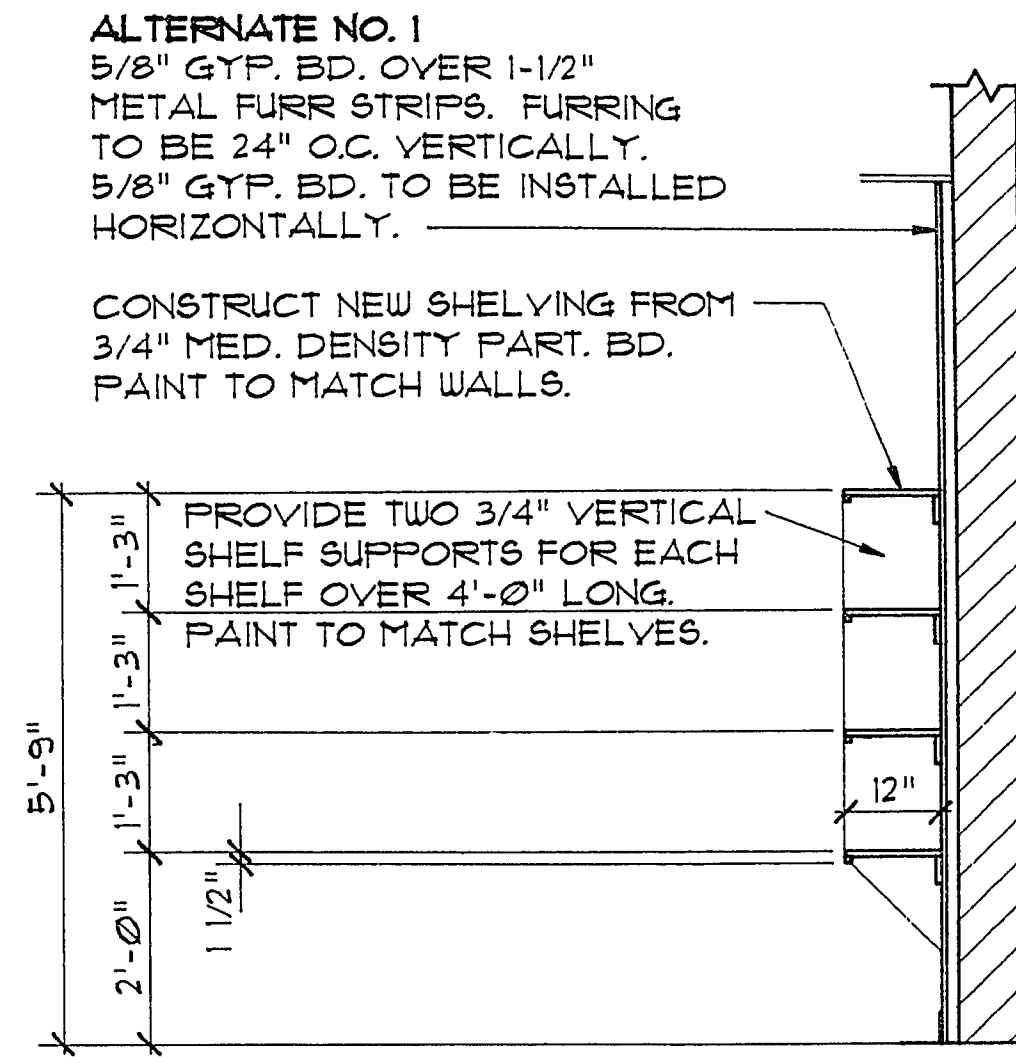


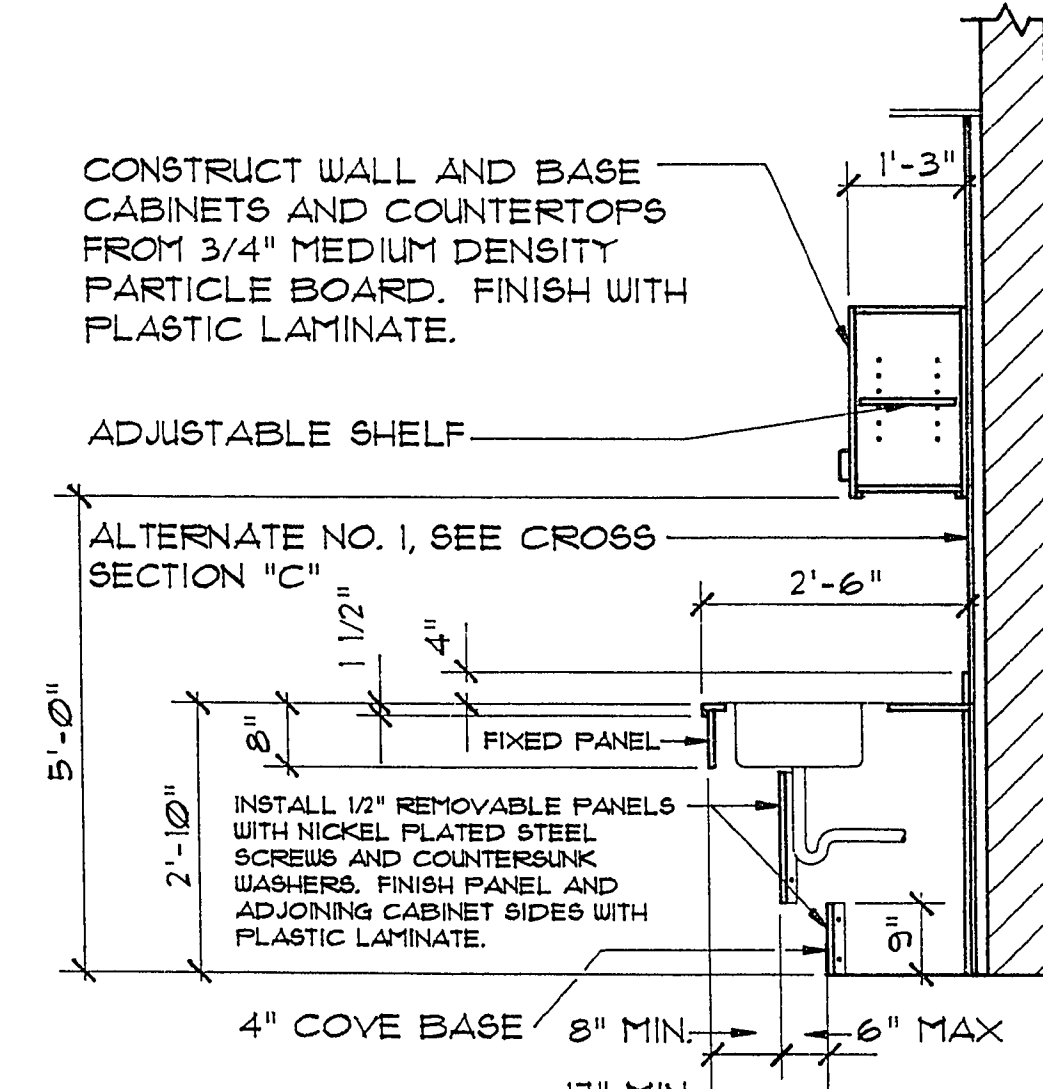
CROSS SECTION "A"



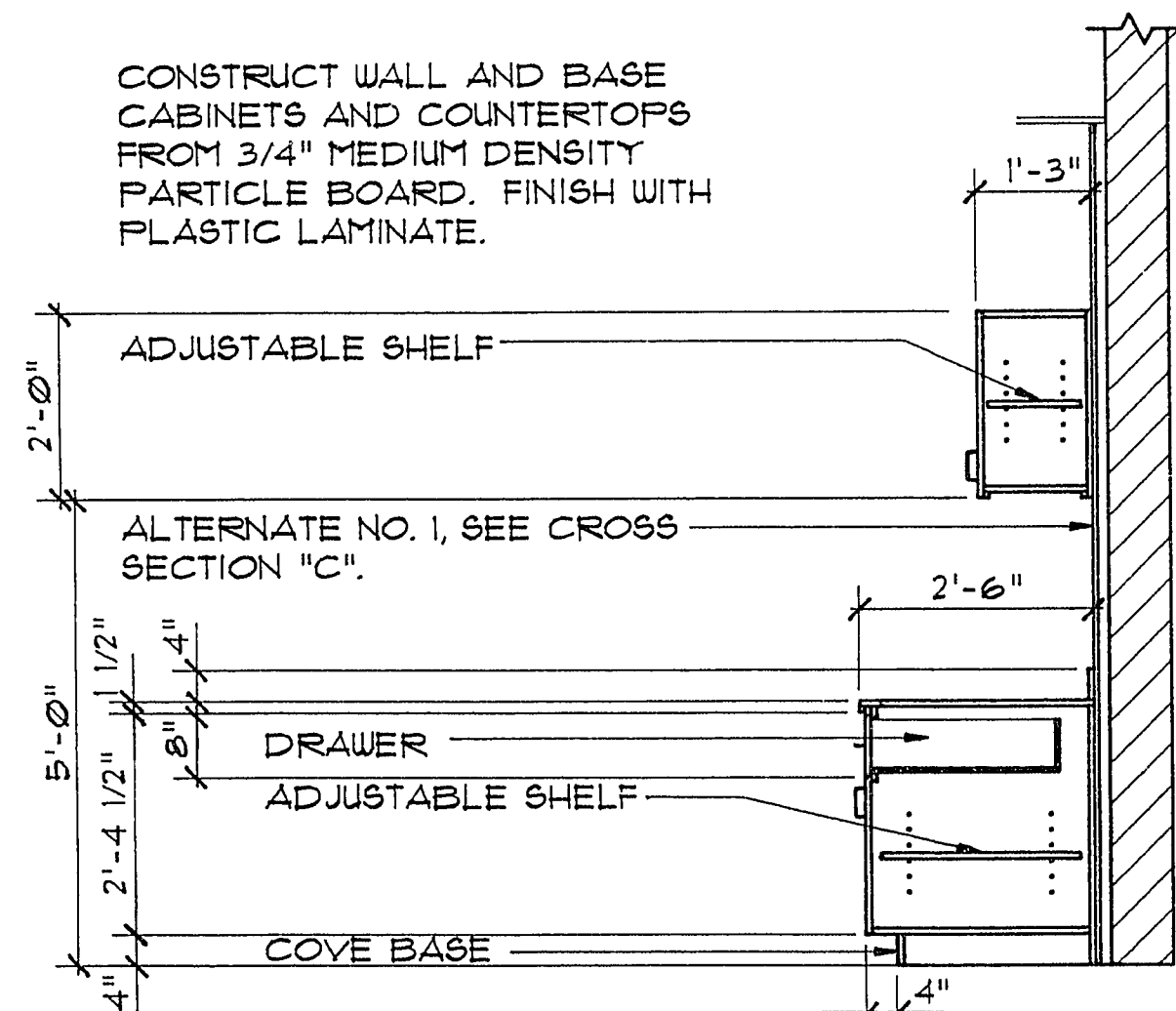
CROSS SECTION "B"



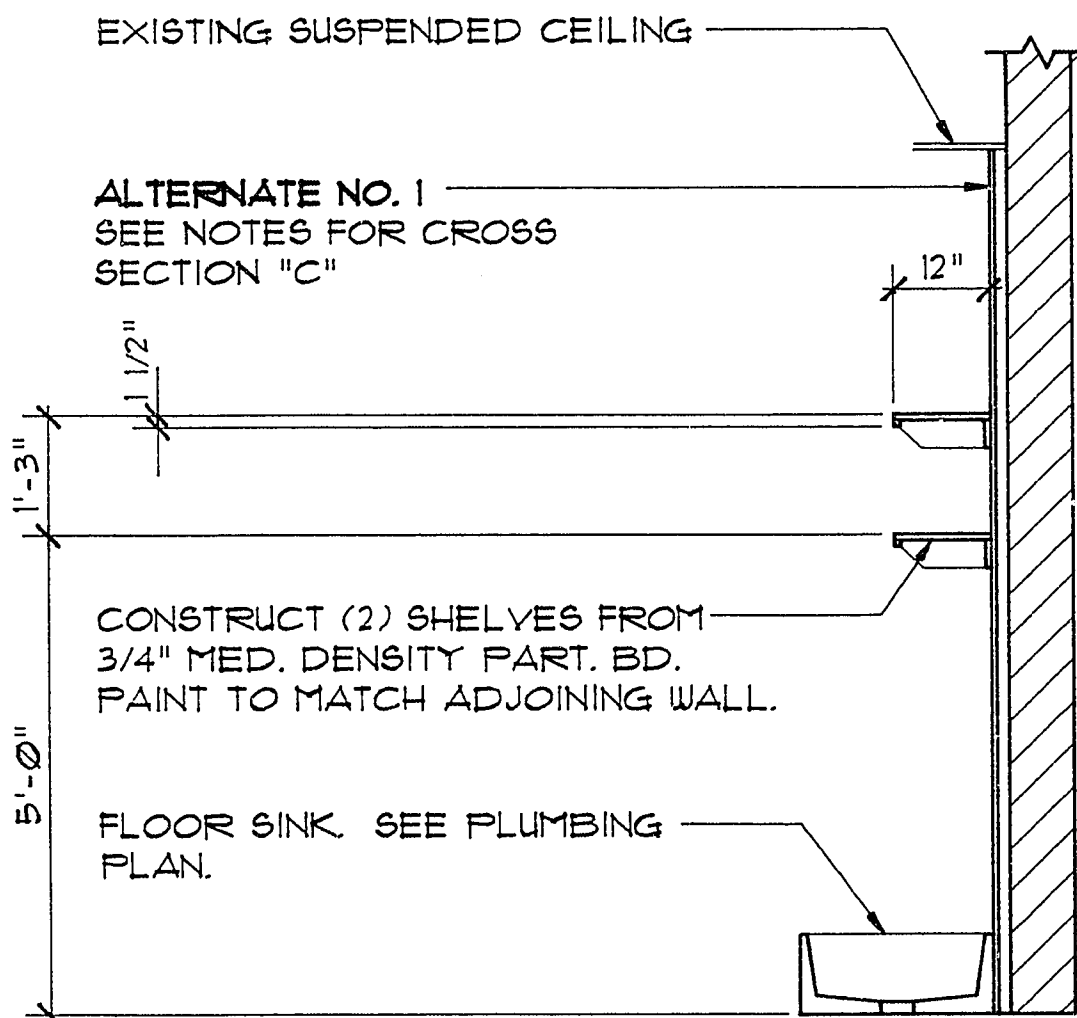
CROSS SECTION "C"



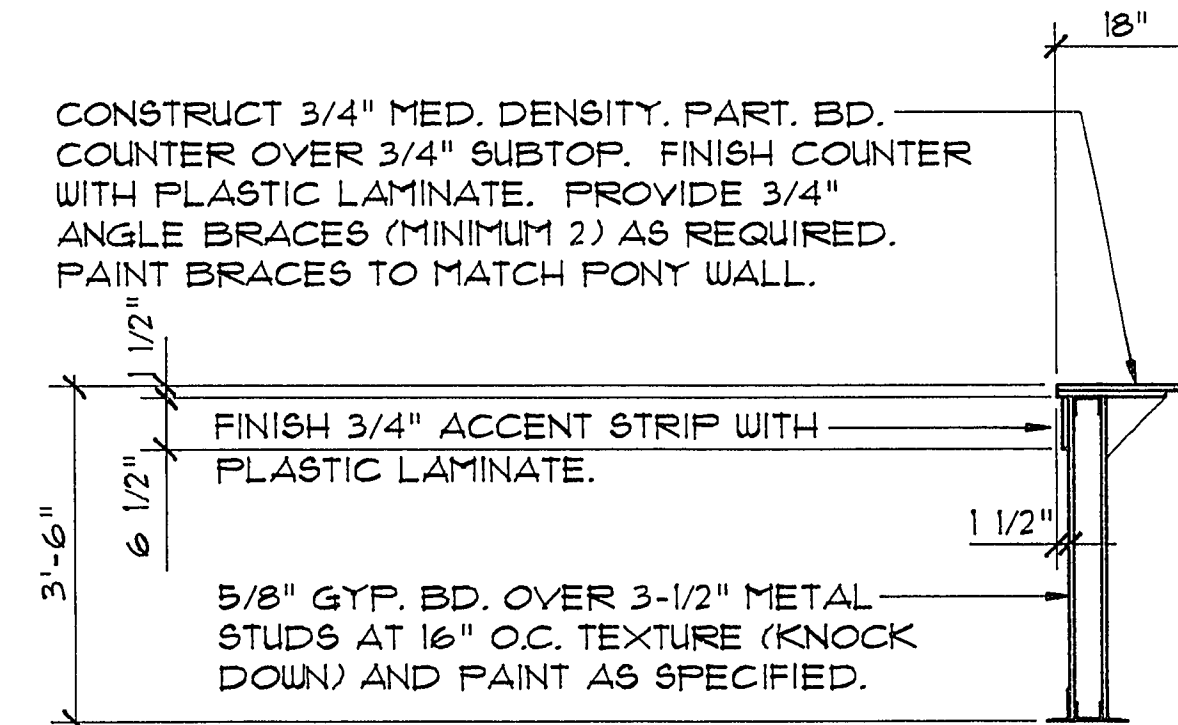
CROSS SECTION "D"



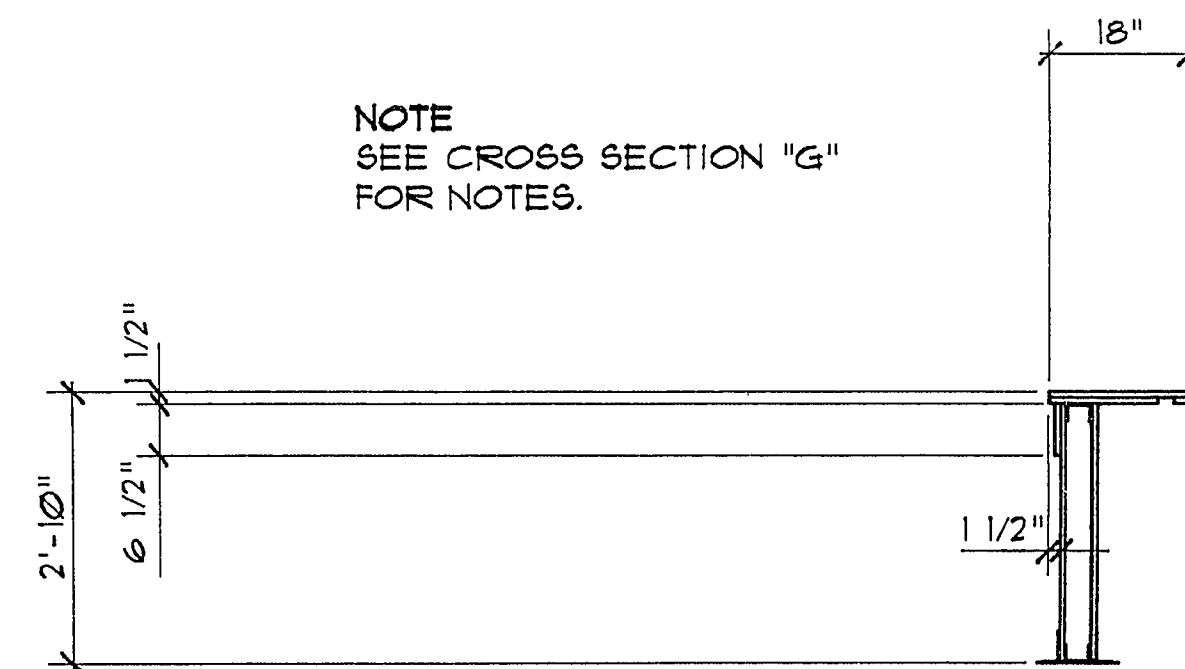
CROSS SECTION "E"



CROSS SECTION "F"

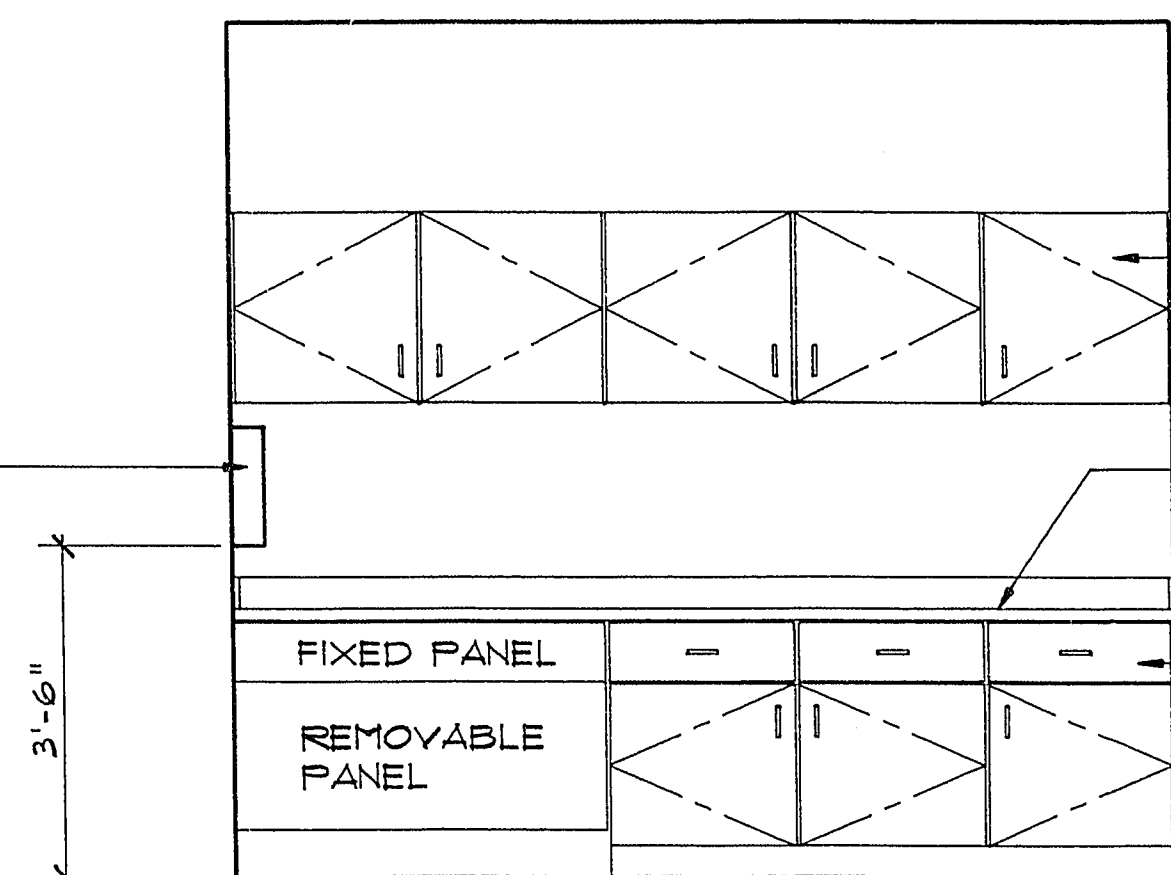


CROSS SECTION "G"



CROSS SECTION "H"

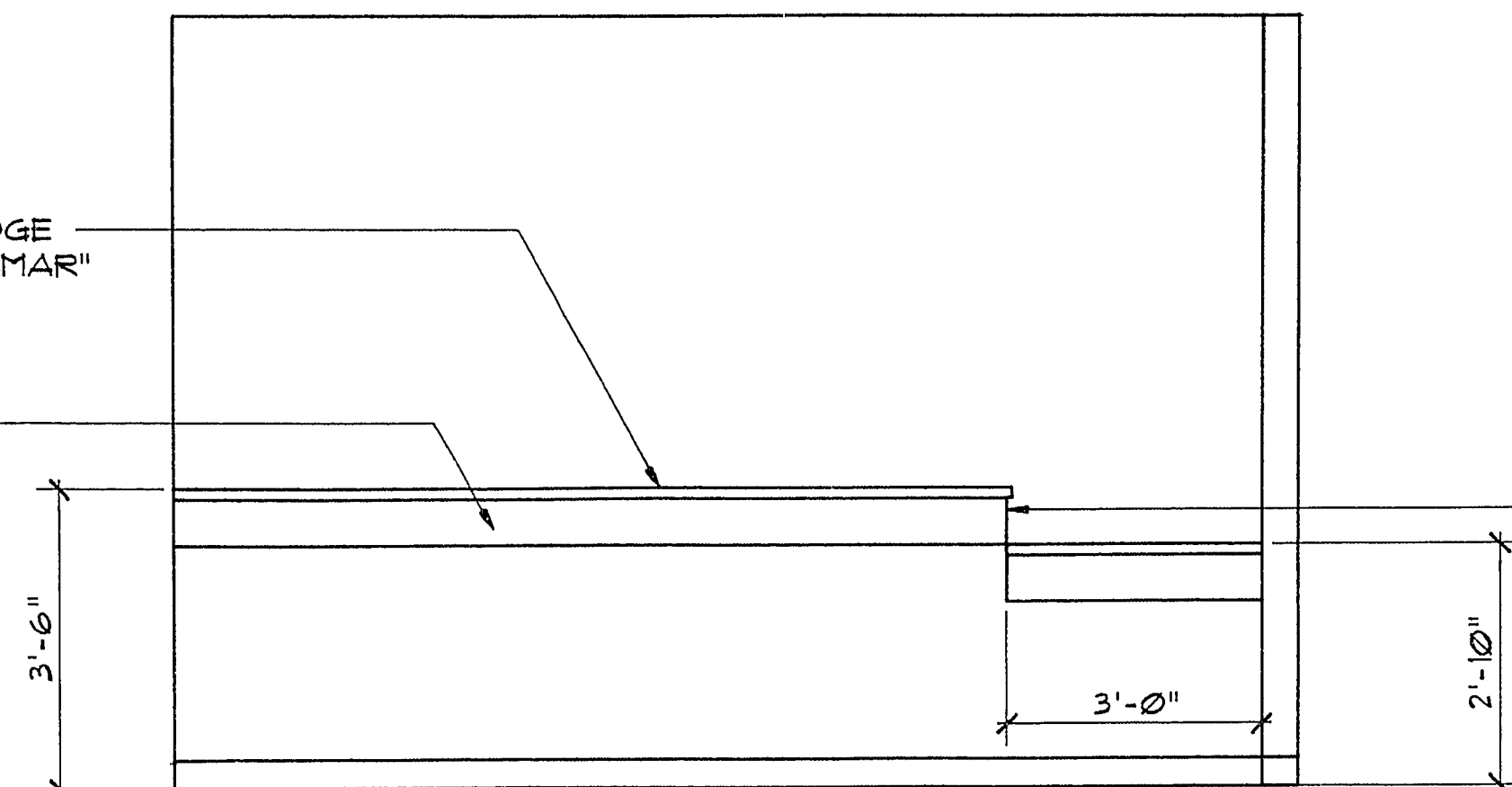
INSTALL "BOBRICK" PAPER TOWEL DISPENSER NO. B-262, INSTALL EVEN WITH FACE OF COUNTER. INSTALL "BOBRICK" SOAP DISPENSER NO. B-212 NEXT TO TOWEL DISPENSER. SEE PLAN VIEW.



ELEVATION # 1

FINISH WALL CABINETS WITH "NEVAMAR" ARP SURFACE TAUPE S-2-34T.
 FINISH SPLASH, COUNTERTOP, AND EDGE OF COUNTERTOP WITH "NEVAMAR" LAGUNA PT-3-1M.
 FINISH BASE CABINETS, DRAWERS AND DOORS WITH "NEVAMAR" ARP SURFACE TAUPE S-2-34T.

FINISH COUNTERTOP AND EDGE OF COUNTERTOP WITH "NEVAMAR" LAGUNA PT-3-1M.
 FINISH ACCENT STRIP WITH "NEVAMAR" ARP SURFACE DARK LAUREL S-3-42G.



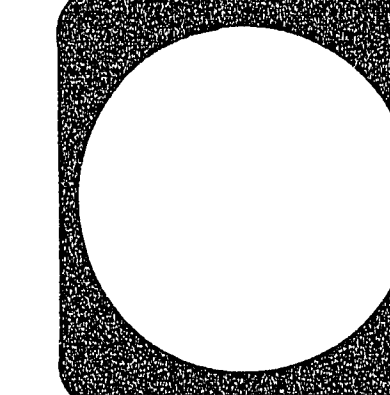
ELEVATION # 2

EXTEND ACCENT LAMINATE STRIP ACROSS FACE OF PONY WALL.



City of Las Vegas, Nevada
 Department of Public Works
 ARCHITECTURAL SERVICES
 SCALE: 1/2" = 1'-0"
 DATE: 8-93

NO.	REVISIONS	DATE



WEST LAS VEGAS CITY HALL ANNEX
 CROSS SECTIONS AND ELEVATIONS

PROJECT NO.
 DRAWING NO. 513-57F
 SHEET 2 OF 7

10-34