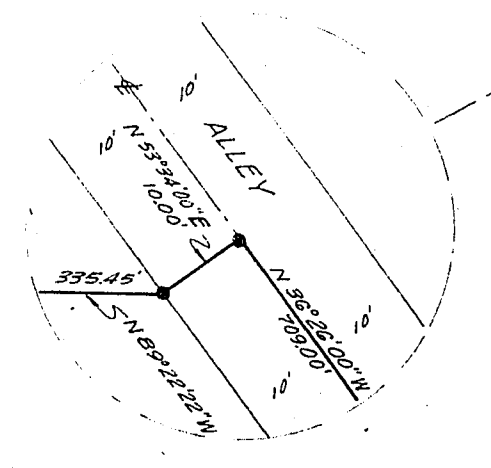
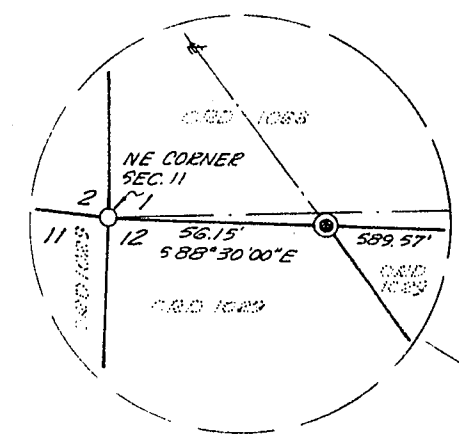
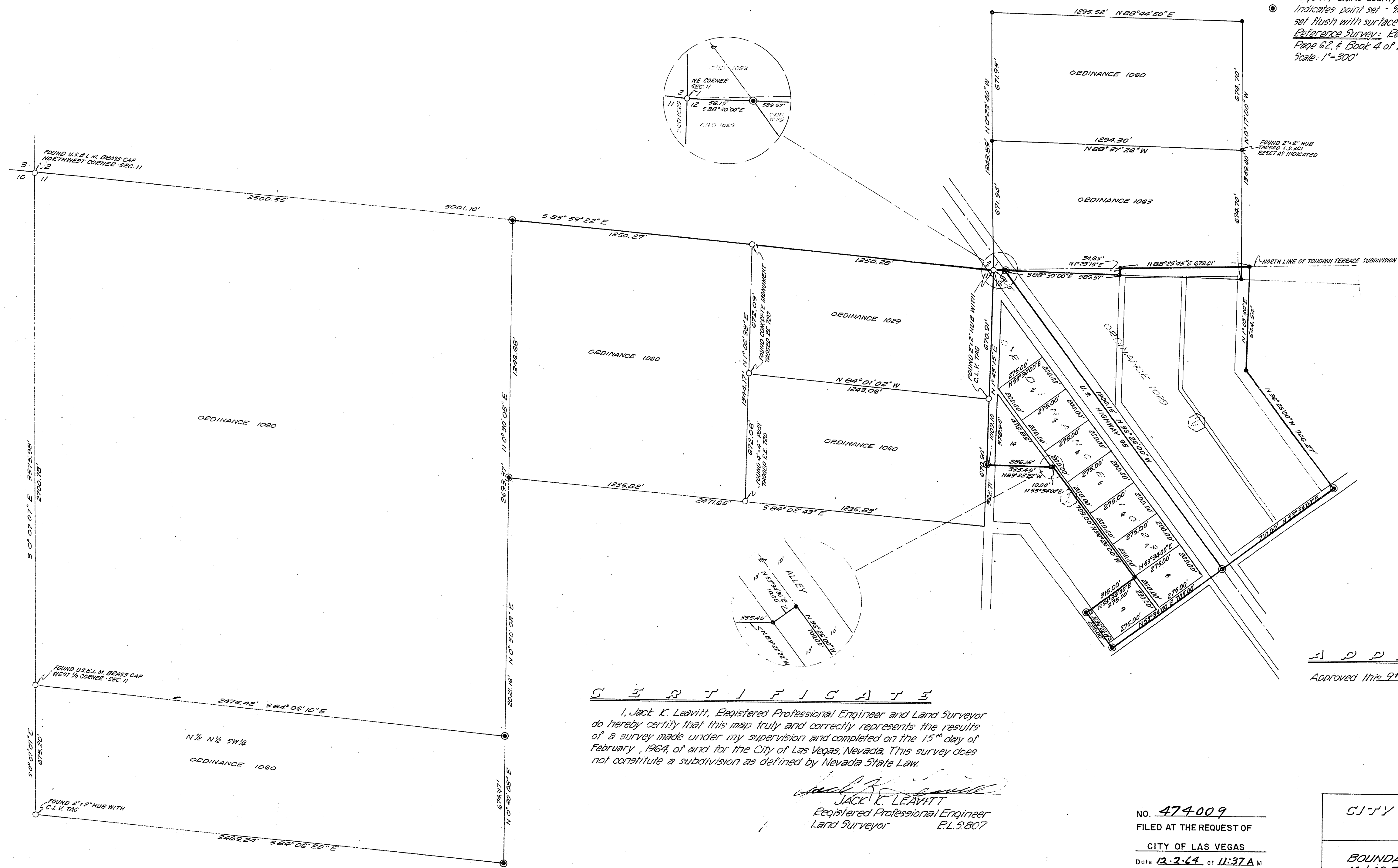


L E G E N D

- Indicates point found - as shown
- Indicates point set - 1/2" reinforcing bar with aluminum cap tagged P.L. 5807-CL.V set in concrete
- Basis of Bearings: The Center Line of U.S. Highway 95 as per Book 4 of Plats, Page 19, Clark County Records, Clark County, Nevada - N 36° 26' 00" W
- Indicates point set - 1/2" reinforcing bar with aluminum cap tagged P.L. 5807-CL.V set flush with surface of A.C. Paving
- Reference Survey: Registered Professional Engineer's File 6 Page 92, File 2 Page 62, & Book 4 of Plats, Page 19, Clark County Records, Clark County, Nevada Scale: 1" = 300'



SCALE: 1" = 300'

A P P R O V A L S

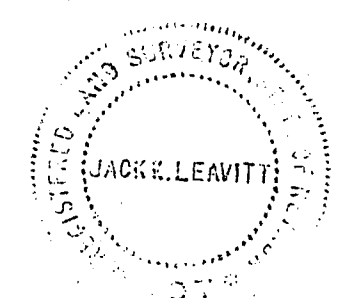
Approved this 9th day of Sept., 1964

R.P. Sauep
 R. P. SAUEP
 City Engineer - P.E. 396

C E R T I F I C A T E

I, Jack K. Leavitt, Registered Professional Engineer and Land Surveyor do hereby certify that this map truly and correctly represents the results of a survey made under my supervision and completed on the 15th day of February, 1964, of and for the City of Las Vegas, Nevada. This survey does not constitute a subdivision as defined by Nevada State Law.

Jack K. Leavitt
 JACK K. LEAVITT
 Registered Professional Engineer
 Land Surveyor P.L. 5807



NO. 474-009
 FILED AT THE REQUEST OF
CITY OF LAS VEGAS
 Date 12-2-64 at 11:37 A M
 FILE 15 PAGE 63
 of Surveys
 OFFICIAL RECORDS BOOK NO. 589
 CLARK COUNTY, NEVADA, RECORDS
 PAUL E. HORN, RECORDER
 Fee \$ dh gt Deputy

CITY OF LAS VEGAS, NEVADA
 CITY ENGINEERING DEPT.

BOUNDARY SURVEY OF PORTIONS OF SECTIONS 1, 11, & 12, T.20S., R.60E., M.D.B. & M., CLARK COUNTY, NEV. ANNEXED TO THE CITY OF LAS VEGAS, NEVADA UNDER ORDINANCE N° 1063, 1060, & 1029.

OWN BY	CHG BY	APPROVED	FILE REF
<i>dh</i>			
DATE	DATE	DATE	

053-142