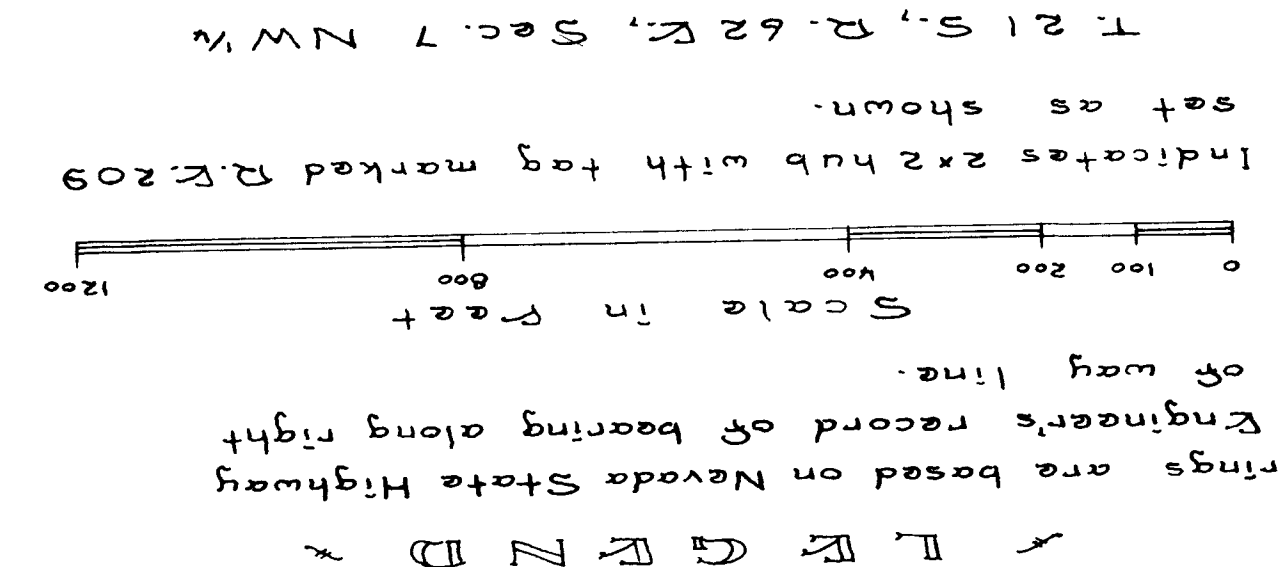


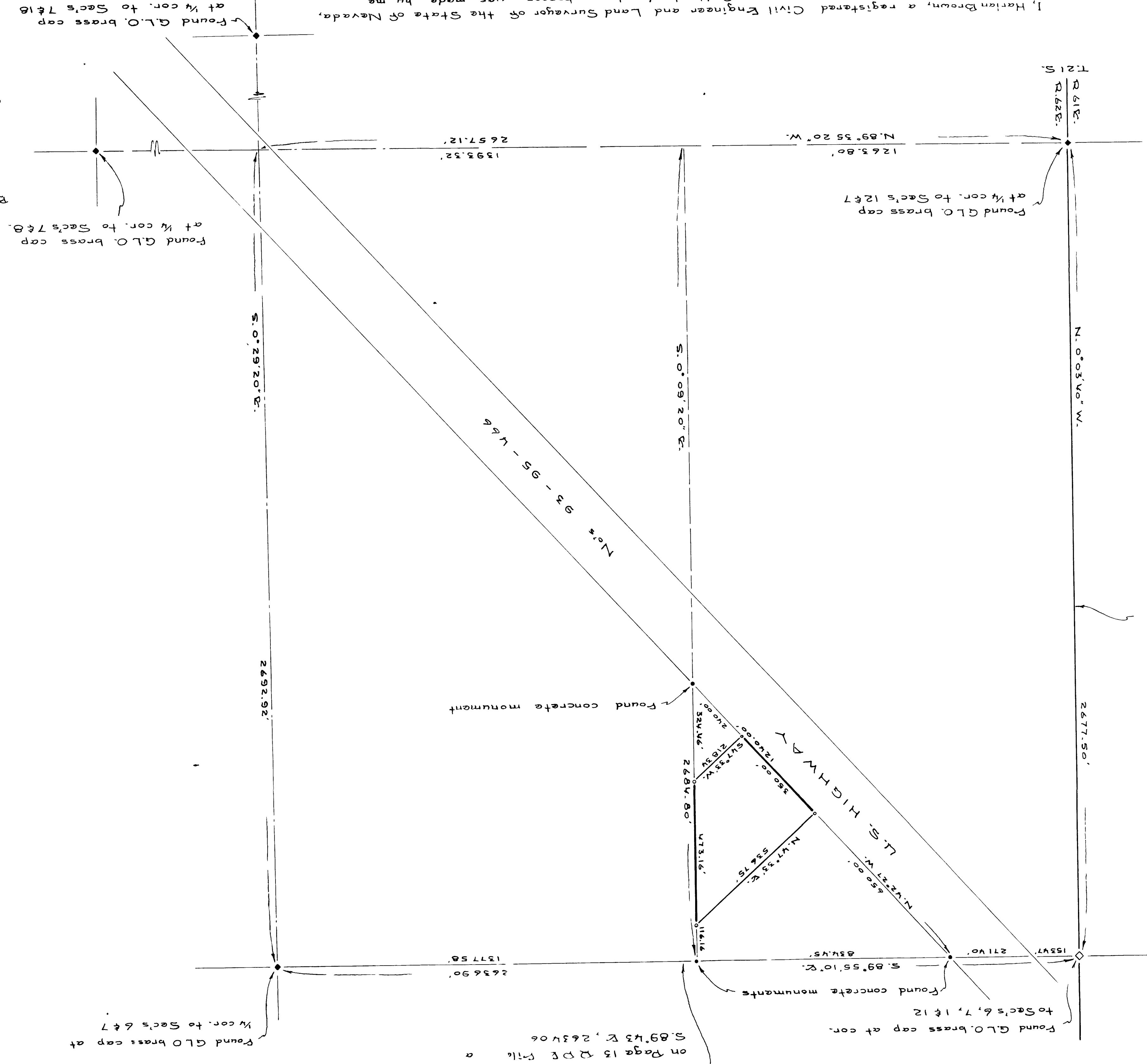
I, Harlan Brown, a registered Civil Engineer and Land Surveyor of the State of Nevada, do hereby certify that the survey of the land shown hereon was made by me at the instance of Julius Donocchi and Judson M. Lilley, in whole or in part, does not appear on any map of record sufficiently to identify or corroborate the results shown hereon; that any discrepancies between this survey and parts of other surveys are shown with their descriptions; that the basis of bearings, ties to witness corners or other permanent ties including U.S. Coast and Geodetic control systems, legal descriptions in any, scale of map, and the relation of this survey to adjacent official city, county, state or federal surveys are properly delineated thereon; and that this survey was completed on the 30th day of January, 1954.

Harlan Brown  
Reg. CE and Land Surveyor Nev. #209

2691  
 Judson M. Lilley  
 2-4-54 3:27 p  
 7-58  
 19

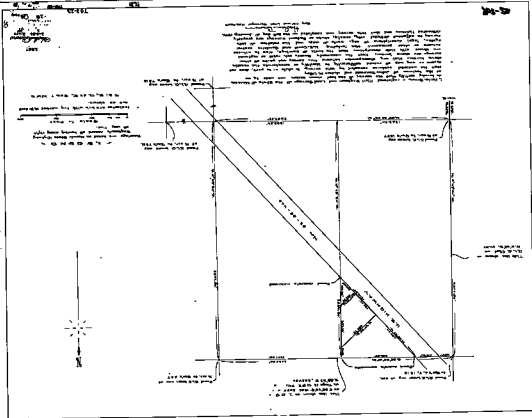


T. 21 S., R. 62 E., Sec. 7 NW



This line shown on G.L.O. Plat as N. 0° 05' 00" W. 2637.50'

This line shown on E.O.P. as S. 89° 45' E. 1906.205' on Page 13 of E. Plat as S. 89° 45' E., 2637.06'



100-100  
 100-100  
 100-100  
 100-100

This map shows a rectangular plot with a diagonal line. The plot is bounded by 'ROAD' lines on the top, bottom, and right sides, and a 'RAILROAD' line on the left. A diagonal line runs from the top-left corner towards the bottom-right. A smaller rectangular area is marked within the bottom-right corner of the main plot. The map includes a north arrow, a scale bar, and several blocks of text, some of which are mirrored or bleed-through from the reverse side of the paper.

SCALE 1:1000  
 100-100  
 100-100  
 100-100  
 100-100



THIS MAP SHOWS A RECTANGULAR PLOT WITH A DIAGONAL LINE. THE PLOT IS BOUNDED BY 'ROAD' LINES ON THE TOP, BOTTOM, AND RIGHT SIDES, AND A 'RAILROAD' LINE ON THE LEFT. A DIAGONAL LINE RUNS FROM THE TOP-LEFT CORNER TOWARDS THE BOTTOM-RIGHT. A SMALLER RECTANGULAR AREA IS MARKED WITHIN THE BOTTOM-RIGHT CORNER OF THE MAIN PLOT. THE MAP INCLUDES A NORTH ARROW, A SCALE BAR, AND SEVERAL BLOCKS OF TEXT, SOME OF WHICH ARE MIRRORING OR BLEED-THROUGH FROM THE REVERSE SIDE OF THE PAPER.

THIS MAP SHOWS A RECTANGULAR PLOT WITH A DIAGONAL LINE. THE PLOT IS BOUNDED BY 'ROAD' LINES ON THE TOP, BOTTOM, AND RIGHT SIDES, AND A 'RAILROAD' LINE ON THE LEFT. A DIAGONAL LINE RUNS FROM THE TOP-LEFT CORNER TOWARDS THE BOTTOM-RIGHT. A SMALLER RECTANGULAR AREA IS MARKED WITHIN THE BOTTOM-RIGHT CORNER OF THE MAIN PLOT. THE MAP INCLUDES A NORTH ARROW, A SCALE BAR, AND SEVERAL BLOCKS OF TEXT, SOME OF WHICH ARE MIRRORING OR BLEED-THROUGH FROM THE REVERSE SIDE OF THE PAPER.