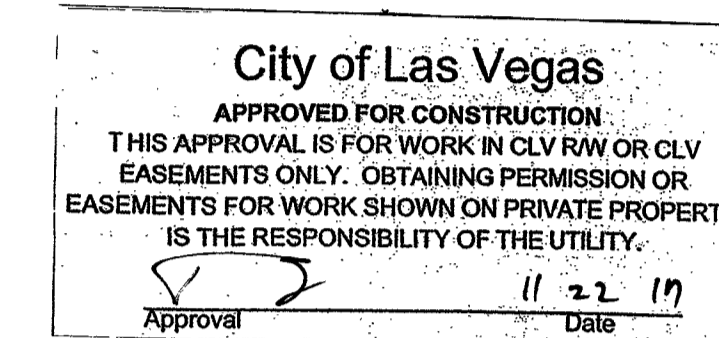


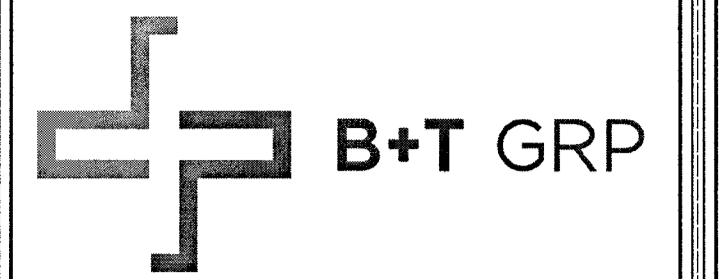


33TM0088SMC
VG0022BA_31LAB
718.25 FRANKLIN AVE
LAS VEGAS, NV 89104
APN: 162-03-699-001

L19-01296 107V/7055-CBL



ALL CONSTRUCTION AND MATERIAL SHALL BE IN ACCORDANCE WITH THE "UNIFORM STANDARD SPECIFICATIONS FOR PUBLIC WORKS CONSTRUCTION OFF-SITE IMPROVEMENTS, CLARK COUNTY AREA NEVADA", LATEST ISSUE; THE "UNIFORM STANDARD SPECIFICATIONS FOR PUBLIC WORKS CONSTRUCTION, CLARK COUNTY AREA NEVADA", LATEST ISSUE; AND OTHER APPLICABLE APPROVED STANDARDS ISSUED BY THE CONTROLLING AGENCY; ALL LOCAL CITY CODES AND ORDINANCES APPLICABLE.

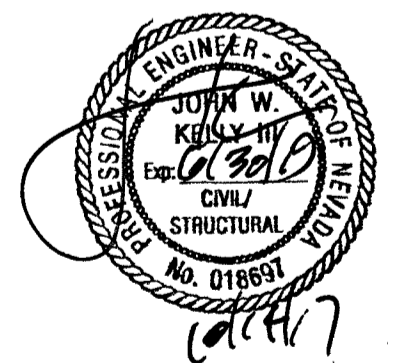


VG0022BA_31LAB
33TM0088SMC
718.25 FRANKLIN AVE
LAS VEGAS, NV 89104

PROJECT NO: 113321.002
CHECKED BY: MEH

ISSUED FOR:			
REV	DATE	DRWN	DESCRIPTION
A	5/8/17	FWP	PRELIMINARY REVIEW
B	5/31/17	MEH	PRELIMINARY REVIEW
C	8/28/17	RPS	PRELIMINARY REVIEW
D	9/11/17	CLM	PRELIMINARY REVIEW
0	10/14/17	CLM	CONSTRUCTION

B&T ENGINEERING, INC.
 12685
 Expires 12/31/17



IT IS A VIOLATION OF LAW FOR ANY PERSON, UNLESS THEY ARE ACTING UNDER THE DIRECTION OF A LICENSED PROFESSIONAL ENGINEER, TO ALTER THIS DOCUMENT.

SHEET NUMBER: T-1 **REVISION: 0**

GENERAL NOTES

THE FACILITY IS UNMANNED AND NOT FOR HUMAN HABITATION. A TECHNICIAN WILL VISIT THE SITE AS REQUIRED FOR ROUTINE MAINTENANCE. THE PROJECT WILL NOT RESULT IN ANY SIGNIFICANT DISTURBANCE OF EFFECT ON DRAINAGE; NO SANITARY SEWER SERVICE, POTABLE WATER OR TRASH DISPOSAL IS REQUIRED AND NO COMMERCIAL SIGNAGE IS PROPOSED.

SITE INFORMATION

PROPERTY OWNER: PUBLIC RIGHT-OF-WAY
 APPLICANT ADDRESS: BLUESTREAM PROFESSIONAL SERVICES, LLC 33015 HIGHWAY 60 WEST FAIRBAULT, MN 55021 (507) 334-2268
 LAT/LONG TYPE: NAD 83
 LATITUDE: 36.15499061'
 LONGITUDE: -115.1444766'
 GROUND ELEVATION: ± 2015' AMSL
 JURISDICTION: CITY OF LAS VEGAS
 APN: 162-03-699-001
 CURRENT ZONING: N-1
 EXISTING LEASE AREA: N/A
 EXISTING OCCUPANCY: U
 PROJECT OCCUPANCY: U
 EQUIPMENT LOCATION: OUTDOOR
 ANTENNA LOCATION: EXISTING UTILITY STRAND

CONSULTANT TEAM

ARCHITECT/ENGINEER: B+T GROUP 1717 S. BOULDER AVENUE TULSA, OK 74119 CONTACT: VICTOR MCALISTER- PROJECT MNGR TEL: (918) 587-4630 FAX: (918) 295-0265
 CABLE OWNER/LANDLORD: COX COMMUNICATIONS, LLC 1700 VEGAS DRIVE LAS VEGAS, NV 89106 DANIELLE ETZBACH (404) 269-3997
 OWNER REP: COX COMMUNICATIONS 1700 VEGAS DRIVE LAS VEGAS, NV 89106 ANTHONY EBERSOLE (702) 545-1643
 DEVELOPER: COX NEVADA TELCOM, LLC ATTN: COX BUSINESS
 POWER: NV ENERGY (702) 633-8400
 FIBER: COX (702) 936-8898
 TELEPHONE: CENTURYLINK (702) 361-3332

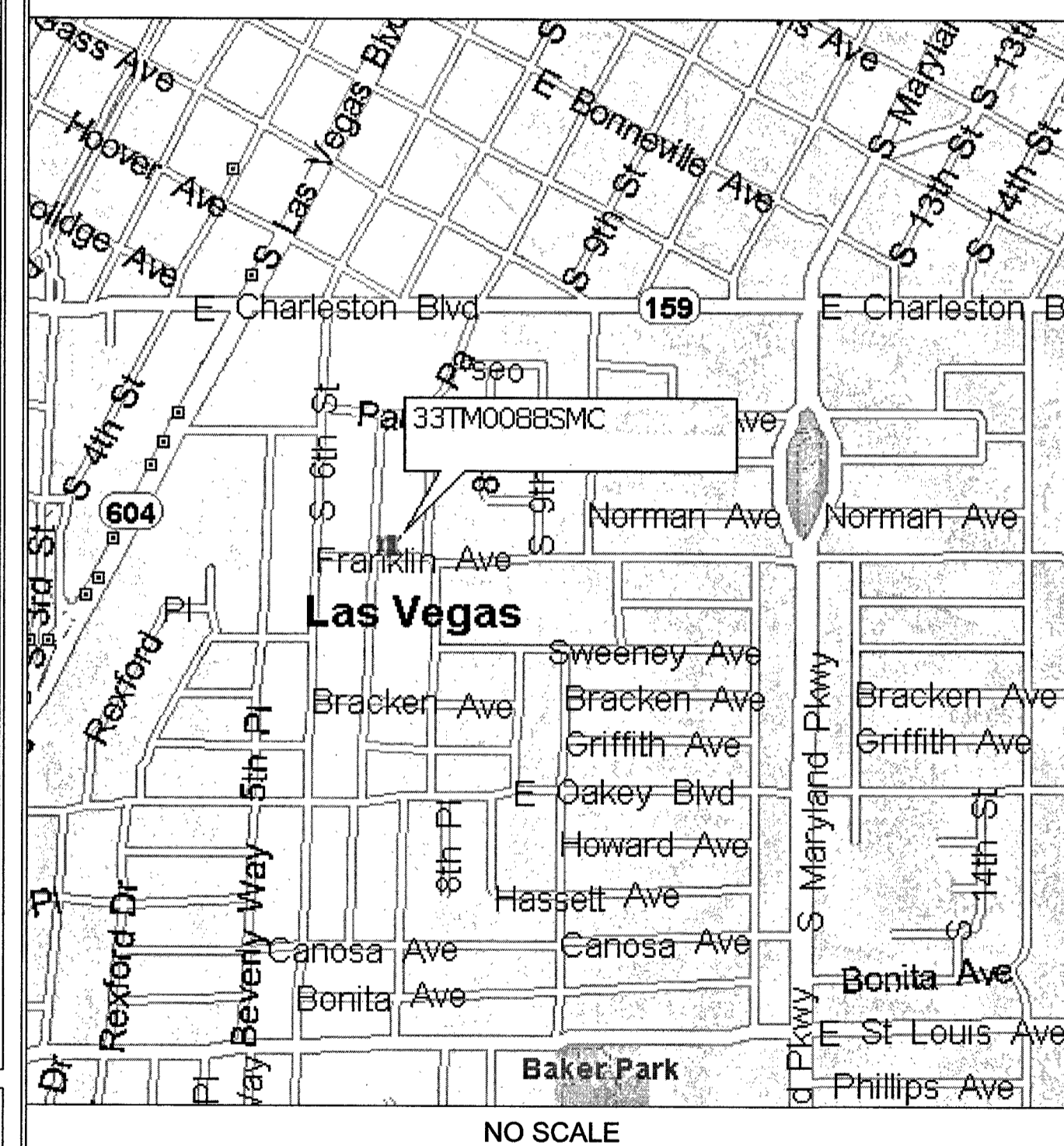
CODES

2012 INTERNATIONAL BUILDING CODE W/ NV STATE AMENDMENTS
 2011 NATIONAL ELECTRICAL CODE W/ NV STATE AMENDMENTS

DO NOT SCALE DRAWINGS

CONTRACTORS SHALL VERIFY ALL PLANS, EXISTING DIMENSIONS & FIELD CONDITIONS ON THE JOB SITE & SHALL IMMEDIATELY NOTIFY THE ARCHITECT/ENGINEER IN WRITING OF ANY DISCREPANCIES BEFORE PROCEEDING WITH THE WORK OR BE RESPONSIBLE FOR SAME.

VICINITY MAP



DRIVING DIRECTIONS

DEPART 1700 VEGAS DR ON VEGAS DR. TURN LEFT ONTO LOCAL ROAD(S). TURN LEFT ONTO VEGAS DR. TURN RIGHT ONTO (N) MARTIN L KING BLVD. TURN LEFT ONTO NV-159 [W CHARLESTON BLVD]. KEEP STRAIGHT ONTO NV-159 [E CHARLESTON BLVD]. TURN RIGHT ONTO S 6TH ST. TURN LEFT ONTO FRANKLIN AVE. ARRIVE 33TM0088SMC

APPROVALS

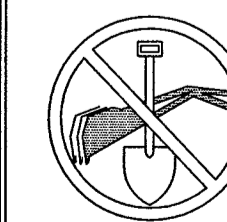
PROJECT MANAGER: _____ DATE: _____
 CONSTRUCTION MANAGER: _____ DATE: _____
 RF ENGINEER: _____ DATE: _____
 SITE ACQUISITION: _____ DATE: _____
 LANDLORD: _____ DATE: _____

PROJECT DESCRIPTION

END USER PROPOSES TO INSTALL STRAND EQUIPMENT ON AN EXISTING OVERHEAD COX STRAND WITHIN AN EXISTING RIGHT-OF-WAY. THE SCOPE WILL CONSIST OF THE FOLLOWING:
 - INSTALL PROPOSED SMALL CELL STRAND EQUIPMENT ONTO EXISTING OVERHEAD COX STRAND

DRAWING INDEX

SHEET NO:	SHEET TITLE
T-1	TITLE SHEET
A-1	SITE PLAN
A-2	ELEVATION
A-3	EQUIPMENT DETAILS



CALL NEVADA ONE CALL
 (800) 227-2600
 CALL 3 WORKING DAYS
 BEFORE YOU DIG!

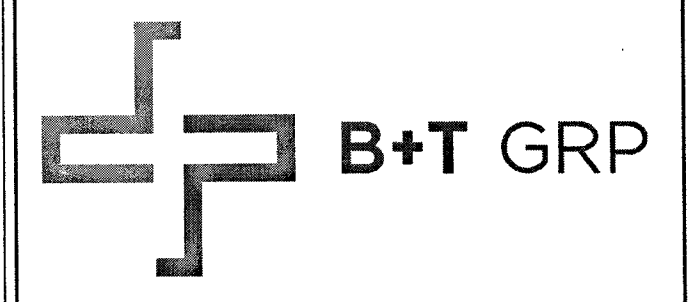
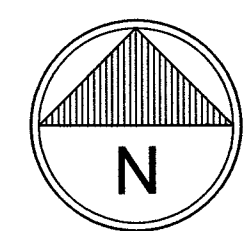
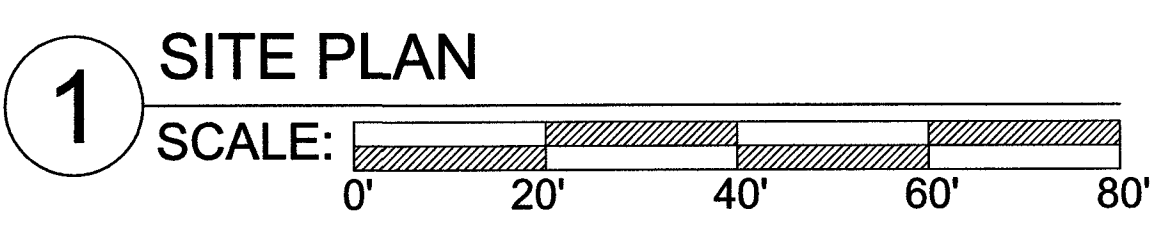
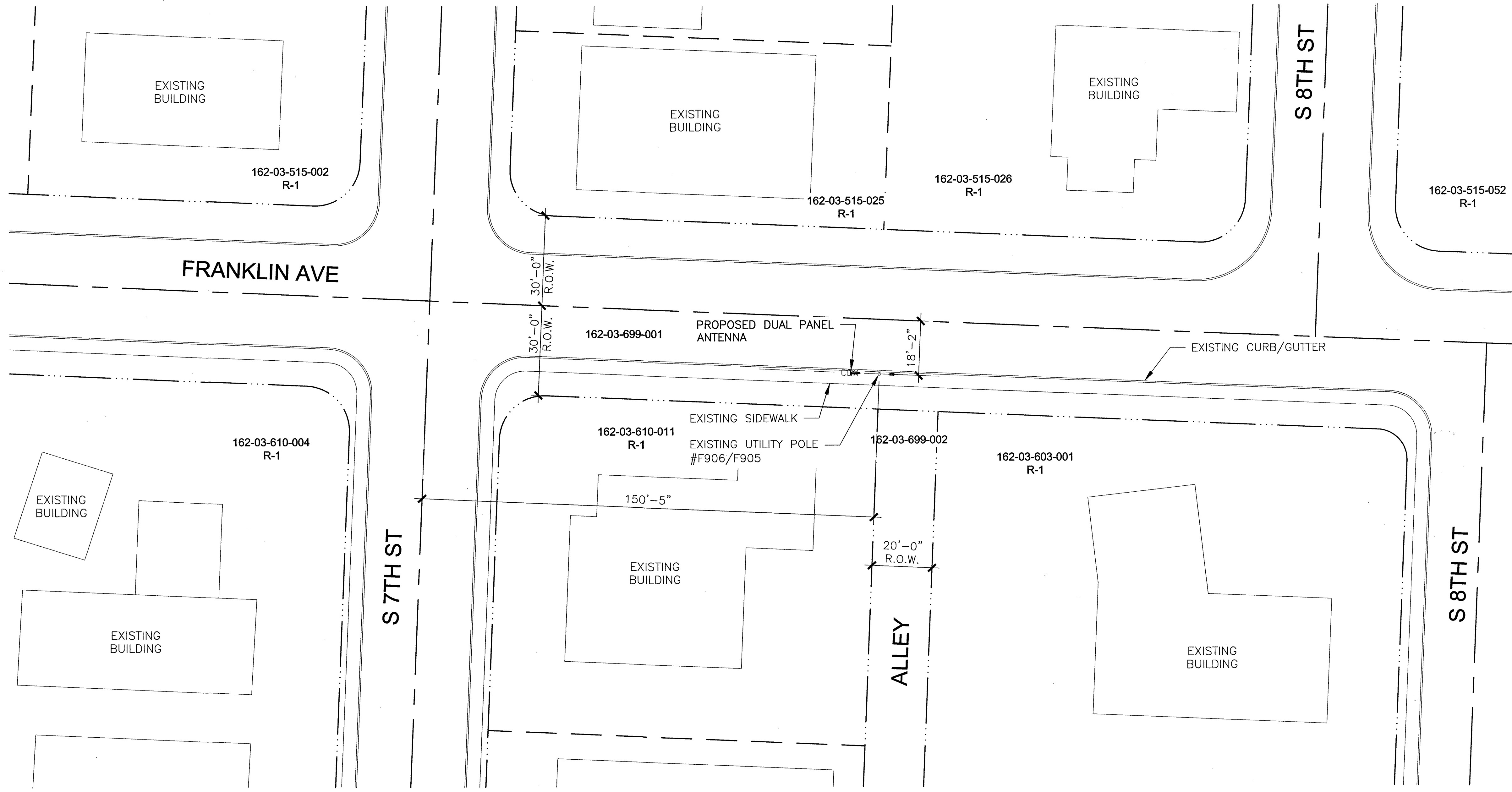


L17-01276 10/24/17

NOTE:
 THIS SITE PLAN WAS GENERATED WITHOUT THE USE OF A SURVEY. PROPERTY LINES, POWER & TELCO UTILITY POINT CONNECTIONS/ROUTES AND EASEMENTS SHOWN ON THESE PLANS ARE ESTIMATED. ALL ITEMS AND DIMENSIONS SHOULD BE VERIFIED IN THE FIELD.

LEGEND:

ROAD/EDGE OF PAVEMENT	---
CENTERLINE OF R.O.W.	----
RIGHT OF WAY	----
PROPERTY LINE	----
COX COM O/H LINE	----



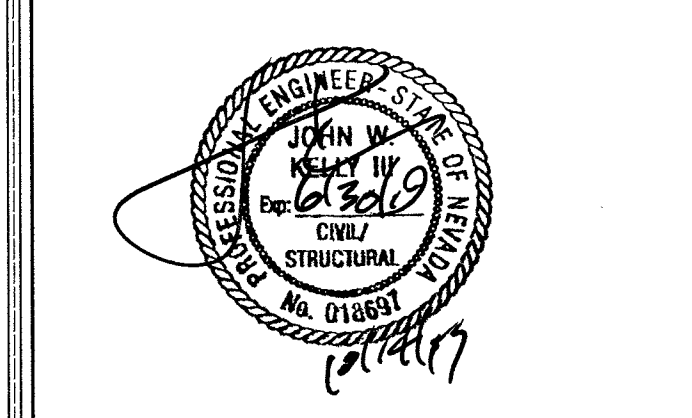
VG0022BA_31LAB
33TM0088SMC
 718.25 FRANKLIN AVE
 LAS VEGAS, NV 89104

PROJECT NO: 113321.002
 CHECKED BY: MEH

ISSUED FOR:

REV	DATE	DRWN	DESCRIPTION
A	5/8/17	FWP	PRELIMINARY REVIEW
B	5/31/17	MEH	PRELIMINARY REVIEW
C	8/28/17	RPS	PRELIMINARY REVIEW
D	9/11/17	CLM	PRELIMINARY REVIEW
O	10/14/17	CLM	CONSTRUCTION

B&T ENGINEERING, INC.
 12685
 Expires 12/31/17

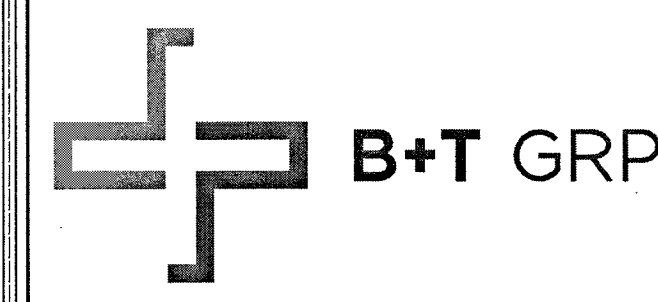


IT IS A VIOLATION OF LAW FOR ANY PERSON, UNLESS THEY ARE ACTING UNDER THE DIRECTION OF A LICENSED PROFESSIONAL ENGINEER, TO ALTER THIS DOCUMENT.

SHEET NUMBER: **A-1** REVISION: **0**

113321_VG0022BA_33TM0088SMC.dwg -- Sheet: A-1 -- User: mvesel -- Oct 14, 2017 -- 3:51pm

NOTE:
 PROJECT SCOPE OF WORK DOES NOT INCLUDE A STRUCTURAL EVALUATION OF THIS POLE OR STRUCTURE. NEW EQUIPMENT SHOWN ON THIS PLAN HAVE NOT BEEN EVALUATED TO VERIFY THE POLE OR STRUCTURE HAS THE CAPACITY TO ADEQUATELY SUPPORT THE EQUIPMENT. PRIOR TO ANY INSTALLATION, A STRUCTURAL EVALUATION OF THE POLE OR STRUCTURE SHOULD BE PERFORMED.



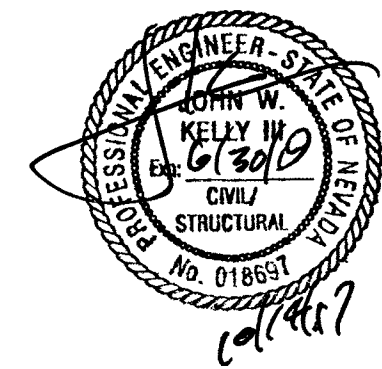
VG0022BA_31LAB
 33TM0088SMC
 718.25 FRANKLIN AVE
 LAS VEGAS, NV 89104

PROJECT NO: 113321.002
 CHECKED BY: MEH

ISSUED FOR:

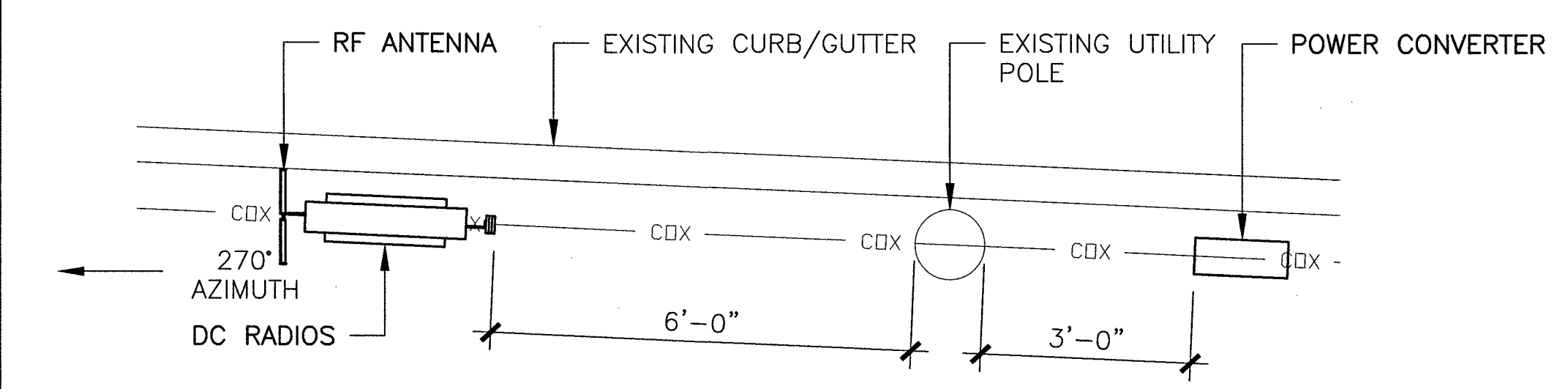
REV	DATE	DRWN	DESCRIPTION
A	5/8/17	FWP	PRELIMINARY REVIEW
B	5/31/17	MEH	PRELIMINARY REVIEW
C	8/28/17	RPS	PRELIMINARY REVIEW
D	9/11/17	CLM	PRELIMINARY REVIEW
O	10/14/17	CLM	CONSTRUCTION

B&T ENGINEERING, INC.
 12685
 Expires 12/31/17

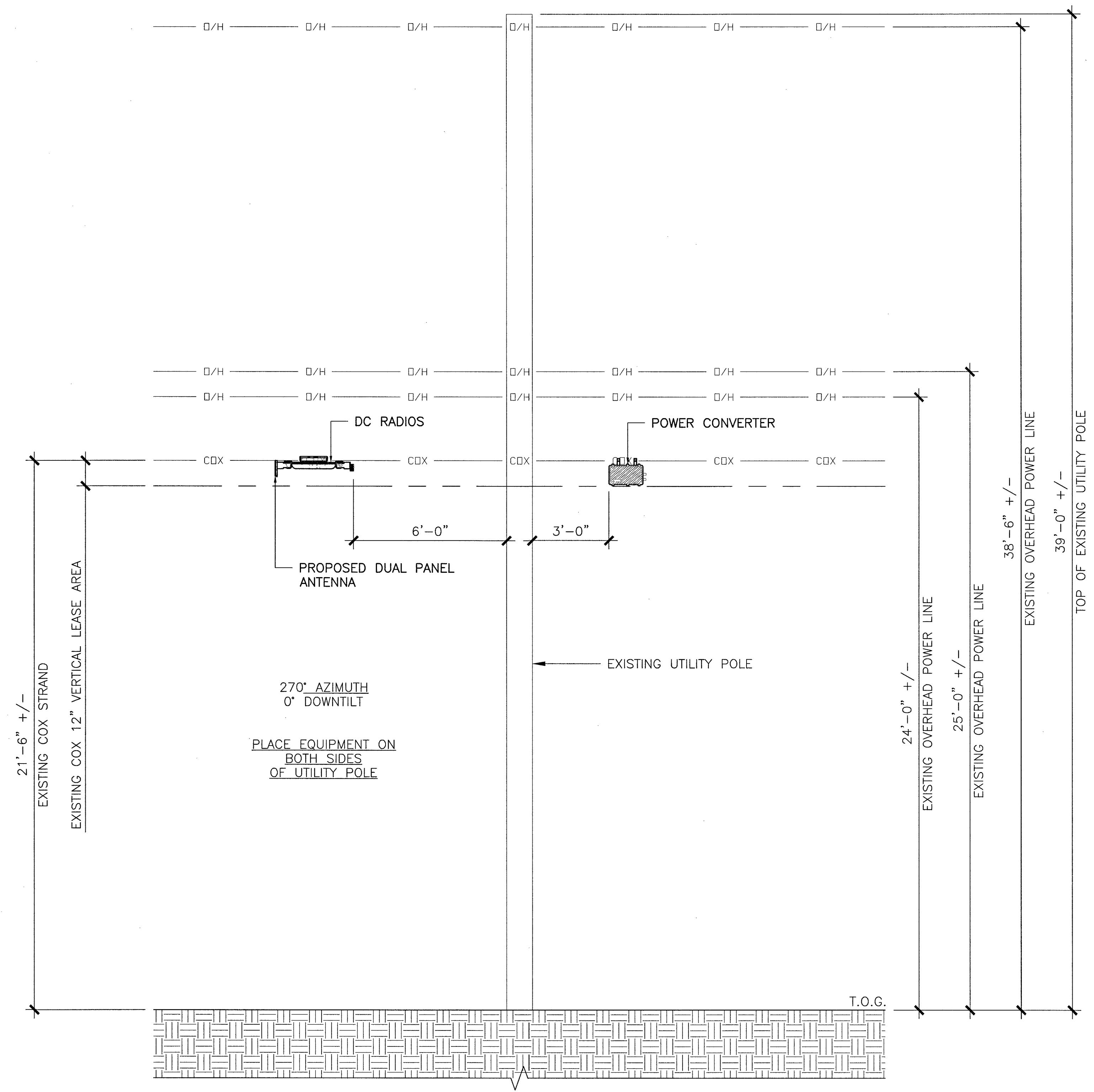
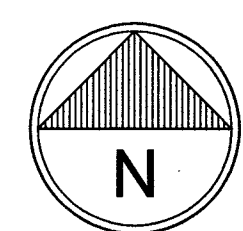


IT IS A VIOLATION OF LAW FOR ANY PERSON, UNLESS THEY ARE ACTING UNDER THE DIRECTION OF A LICENSED PROFESSIONAL ENGINEER, TO ALTER THIS DOCUMENT.

SHEET NUMBER: A-2
 REVISION: 0

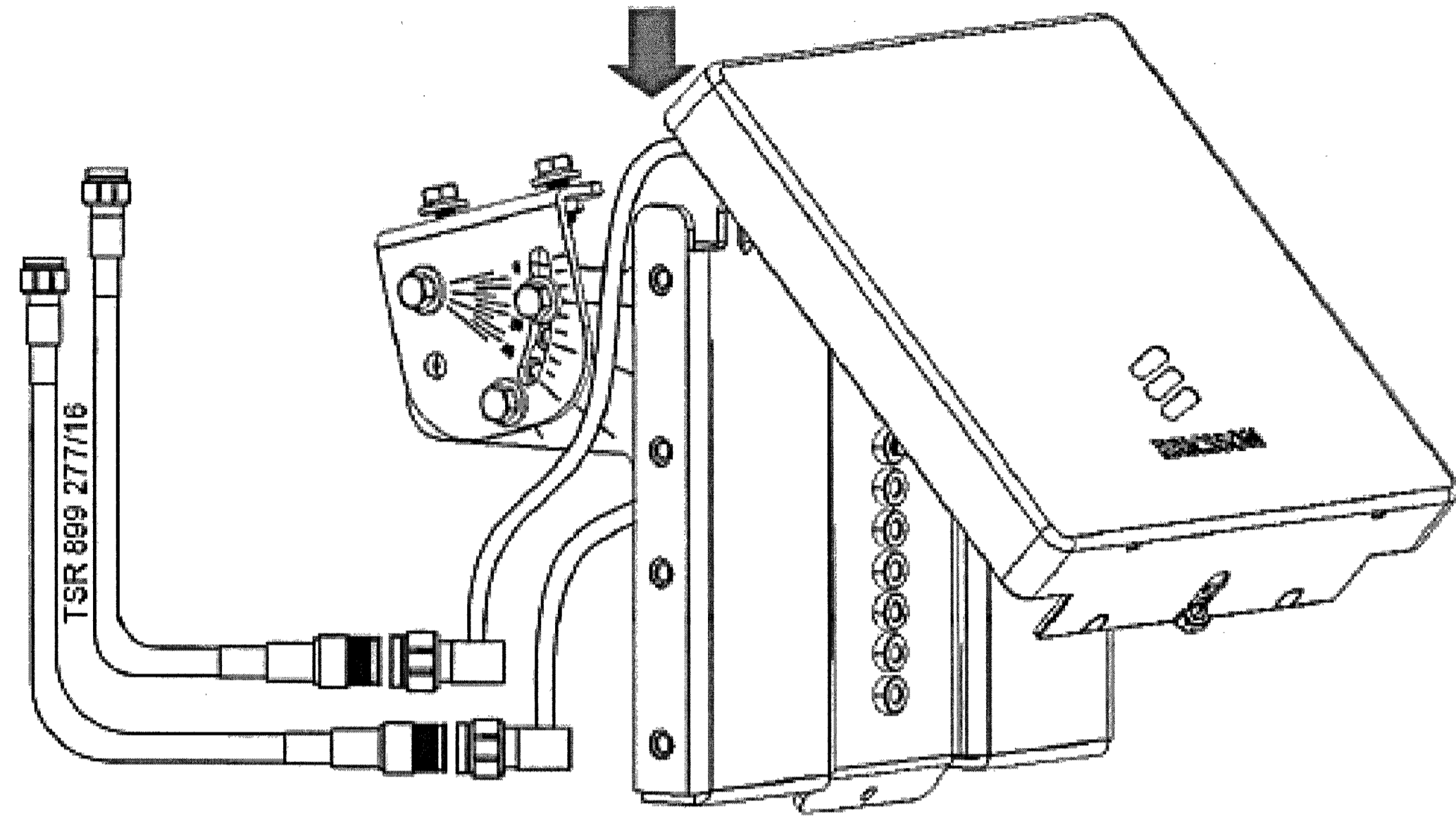


1 ENLARGED SITEPLAN
 SCALE: 0' 1' 2' 4' 10'



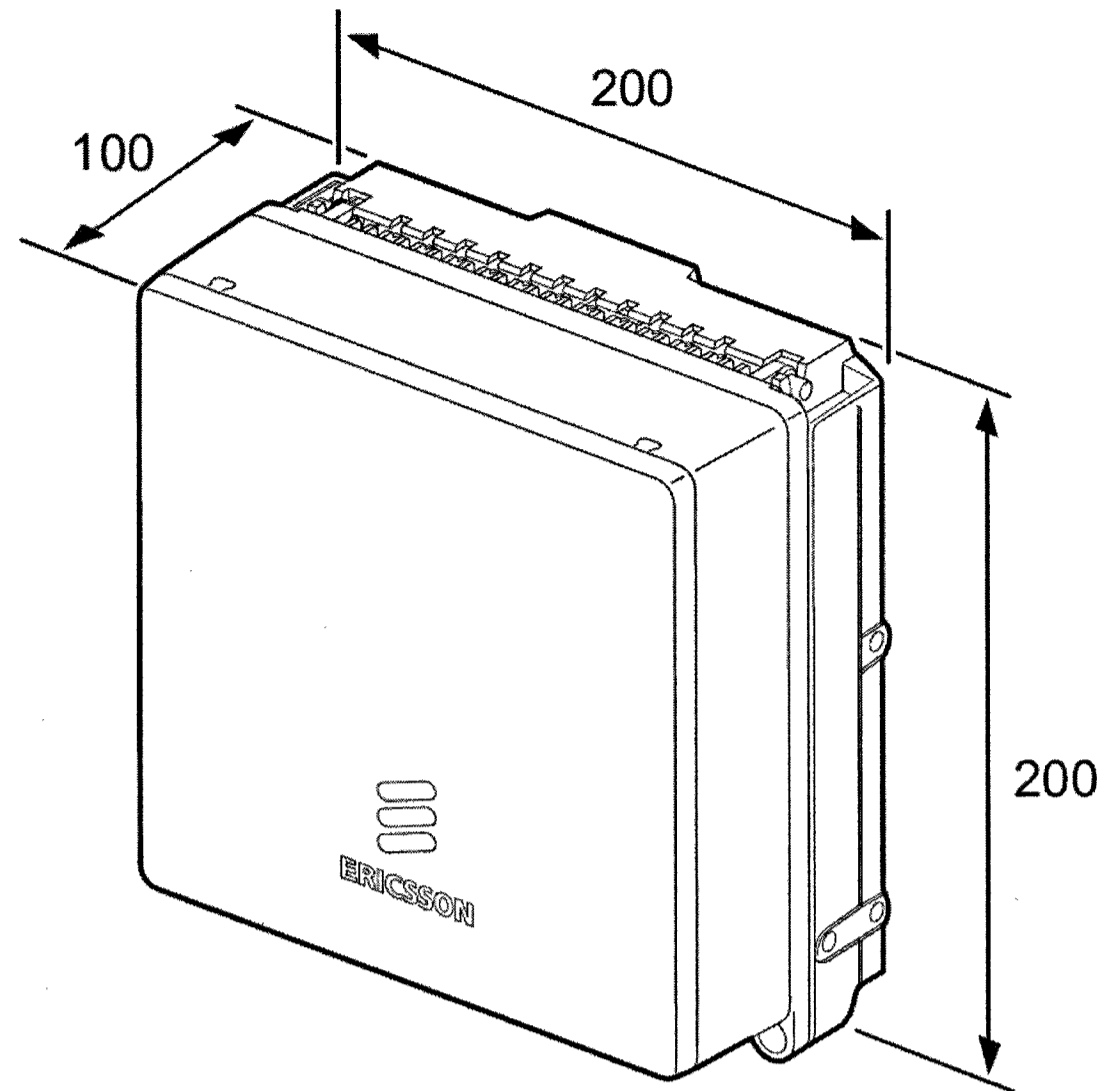
2 SOUTH ELEVATION
 SCALE: 0' 1' 4' 8' 16'

113321_VG00450A_33TM0088SMC.dwg - SheetA-2 - User: mvesel - Oct 14, 2017 - 3:51pm



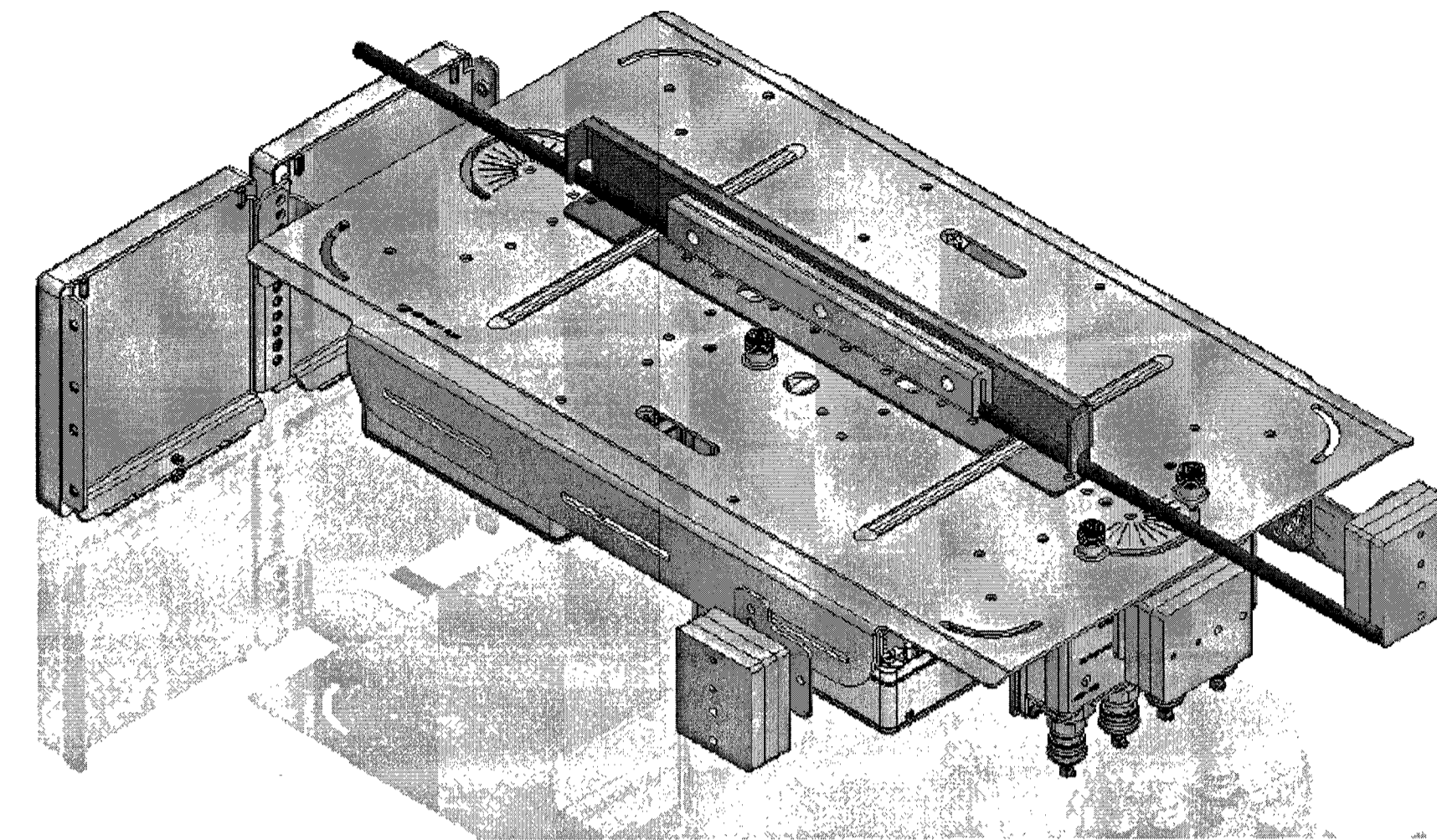
PANEL ANTENNA

DIMENSIONS: 200x200x19 (mm)
WEIGHT: 0.5 kgs



RADIO 2203

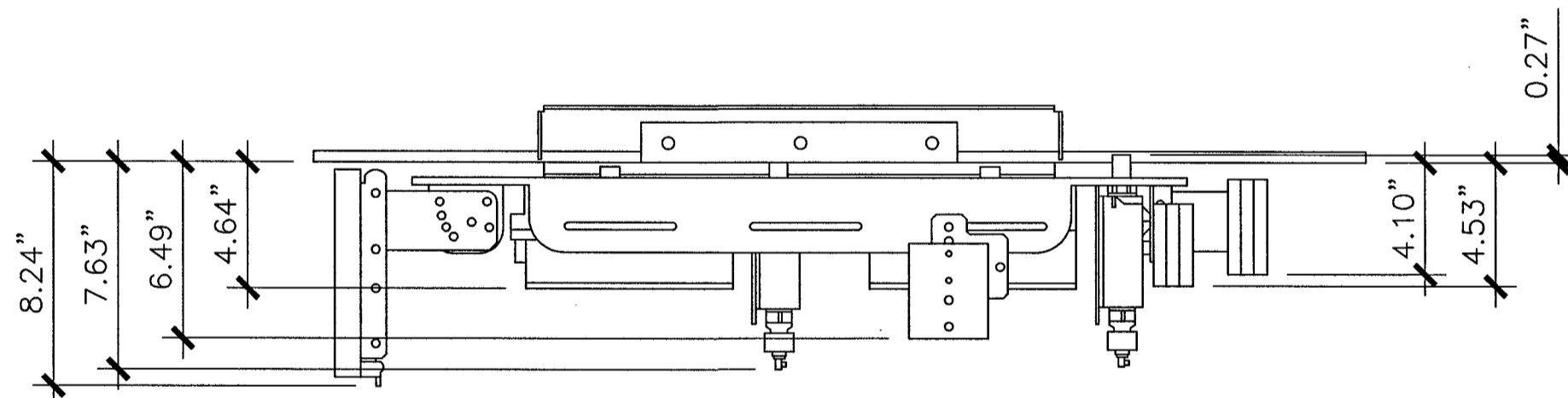
DIMENSIONS W/O ANT.: 200x200x100 (mm)
WEIGHT: 4.5 kgs
POWER TYPE: DC POWER



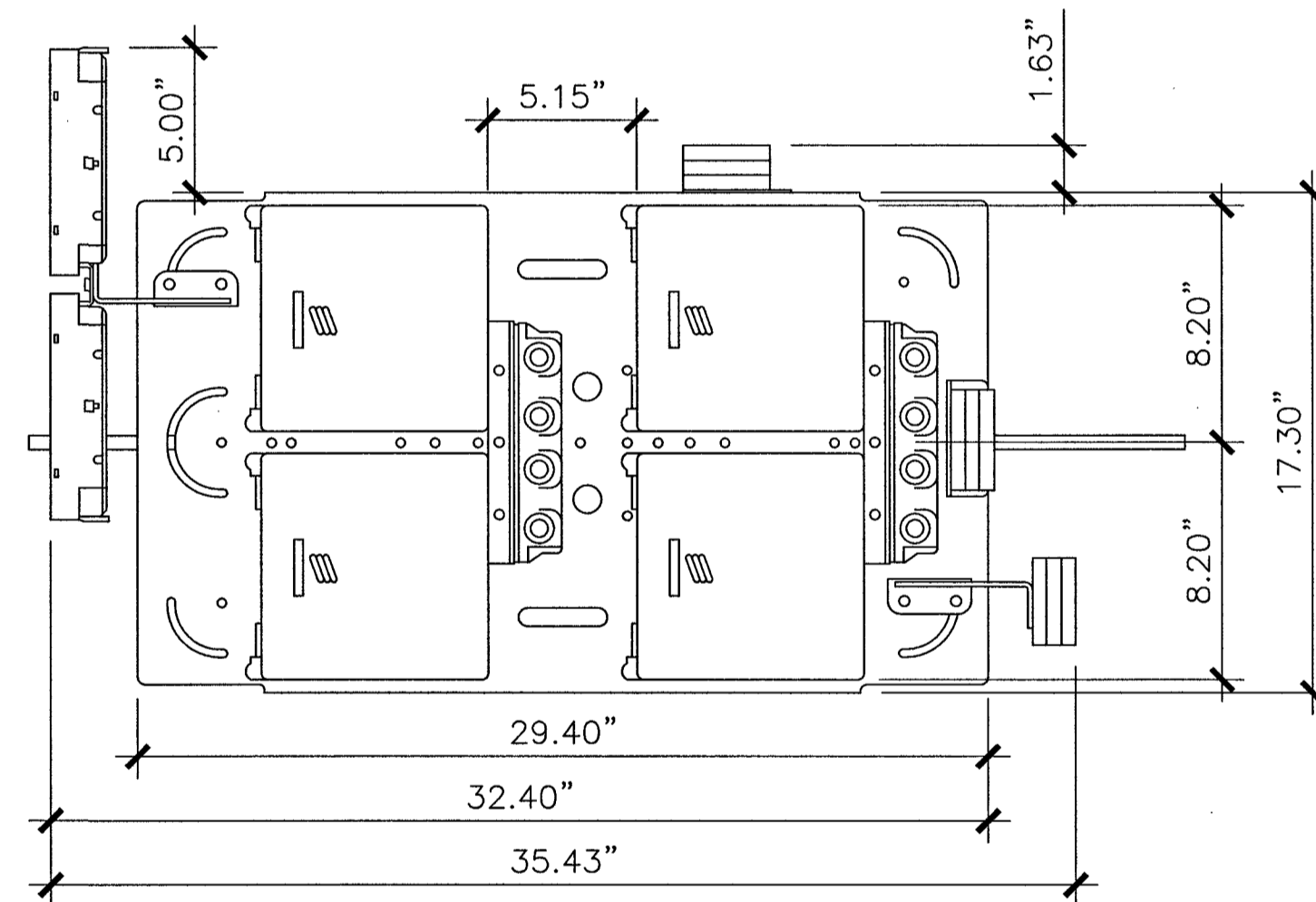
DUAL PANEL ANTENNA STRAND MOUNT CONFIGURATION

DIMENSIONS: 35.43"x17.3"x8.24" (LxWxH)
WEIGHT: 65 LBS (MAX)
STRAND SIZES: 1/4"φ - 7/16"φ

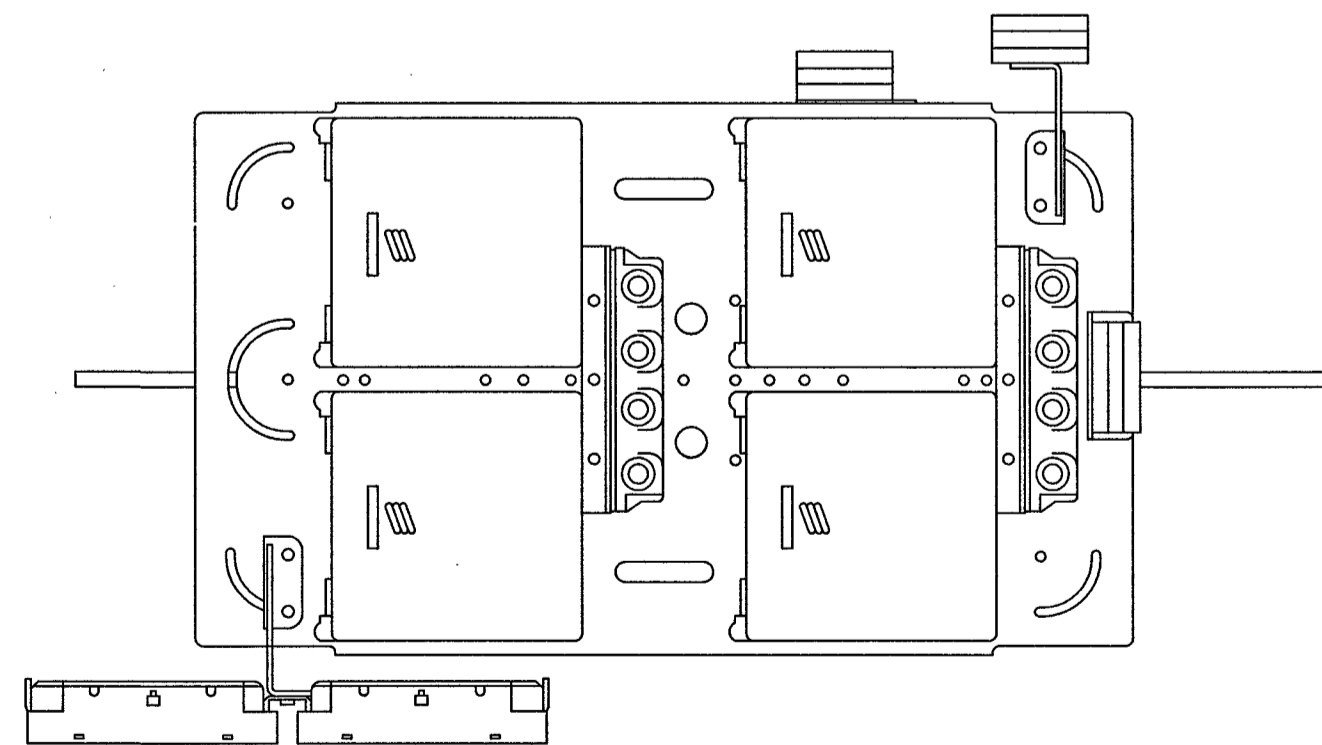
1 ANTENNA & RADIO STRAND MOUNT DETAILS & CONFIGURATION
SCALE: N.T.S.



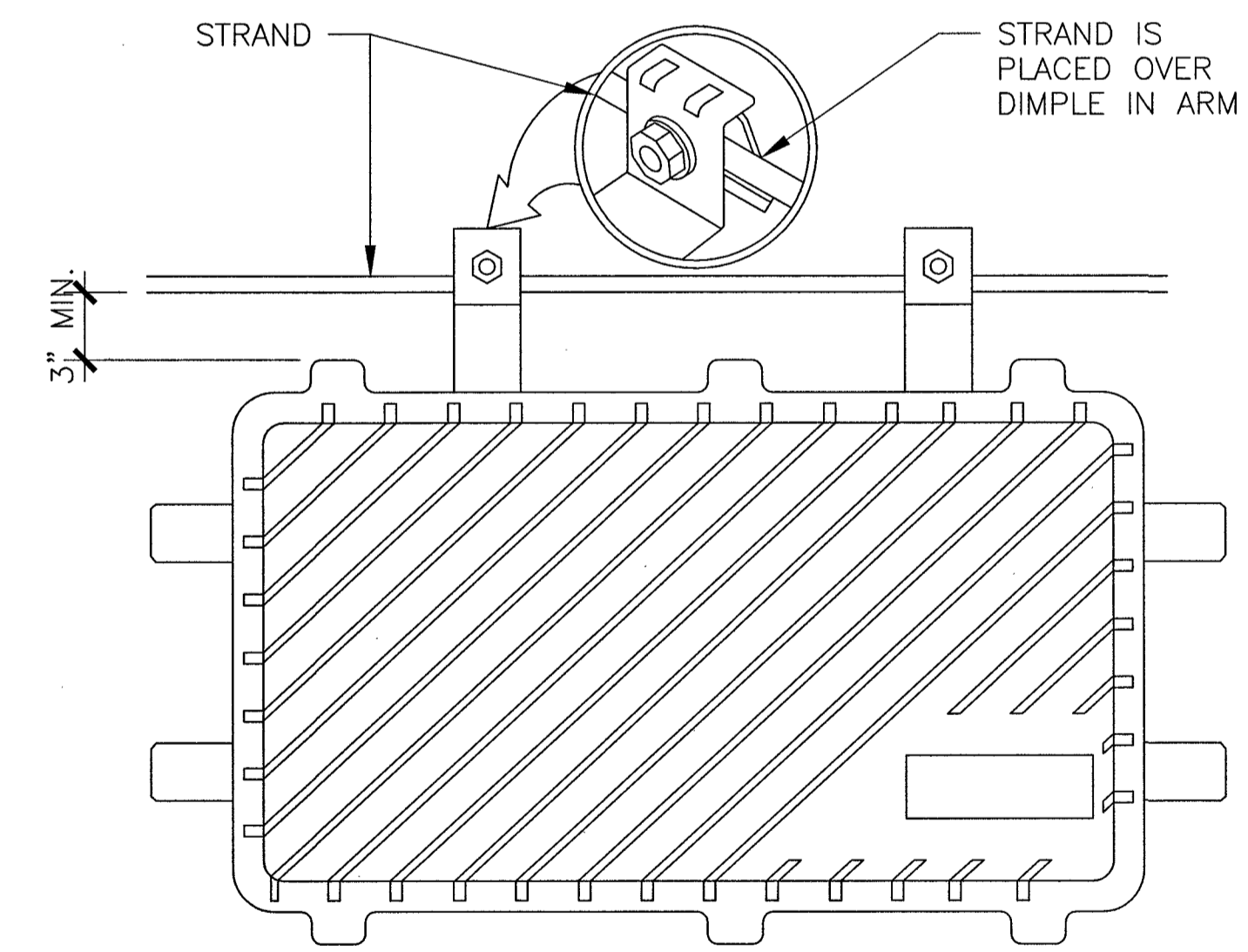
SIDE VIEW (0° AZIMUTH)



TOP VIEW (0° AZIMUTH)



TOP VIEW (90° AZIMUTH)

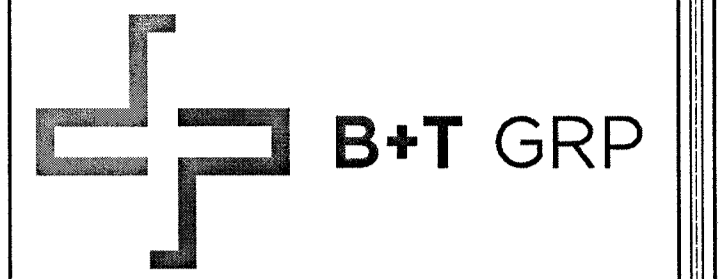


SPECIFICATIONS

MODEL: LBPS-400-4
DIMENSIONS: 20"x10"x8.5"
WEIGHT W/ BRACKET: 25 LBS

2 DUAL PANEL ANTENNA & RADIO STRAND MOUNT
SCALE: N.T.S.

3 LINDSAY POWER CONVERTER DETAIL
SCALE: N.T.S.

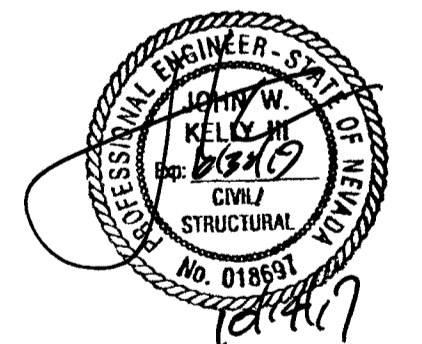


VG0022BA_31LAB
33TM0088SMC
718.25 FRANKLIN AVE
LAS VEGAS, NV 89104

PROJECT NO: 113321.002
CHECKED BY: MEH

ISSUED FOR:			
REV	DATE	DRWN	DESCRIPTION
A	5/8/17	FWP	PRELIMINARY REVIEW
B	5/31/17	MEH	PRELIMINARY REVIEW
C	8/28/17	RPS	PRELIMINARY REVIEW
D	9/11/17	CLM	PRELIMINARY REVIEW
O	10/14/17	CLM	CONSTRUCTION

B&T ENGINEERING, INC.
12685
Expires 12/31/17



IT IS A VIOLATION OF LAW FOR ANY PERSON, UNLESS THEY ARE ACTING UNDER THE DIRECTION OF A LICENSED PROFESSIONAL ENGINEER, TO ALTER THIS DOCUMENT.

SHEET NUMBER: **A-3** REVISION: **0**