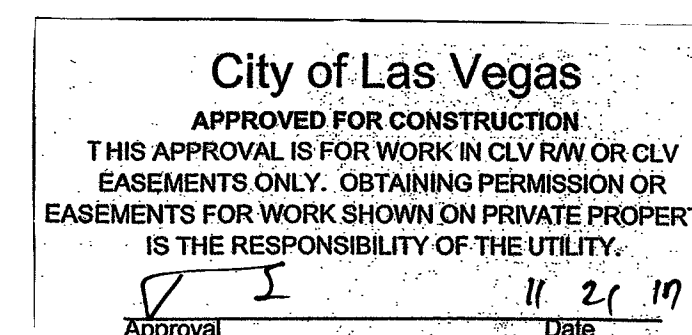


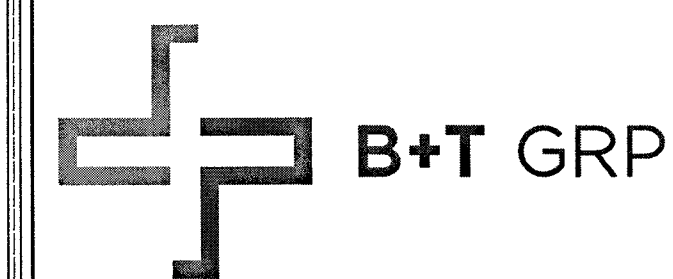


33TM0047SMC
VG0017BA_51LAB
415.25 S 14TH ST
LAS VEGAS, NV 89101
APN: 239-35-499-002

L17-01273 1079051-CBL



ALL CONSTRUCTION AND MATERIAL SHALL BE IN ACCORDANCE WITH THE "UNIFORM STANDARD SPECIFICATIONS FOR PUBLIC WORKS CONSTRUCTION OFF-SITE IMPROVEMENTS, CLARK COUNTY AREA NEVADA", LATEST ISSUE; THE "UNIFORM STANDARD SPECIFICATIONS FOR PUBLIC WORKS CONSTRUCTION, CLARK COUNTY AREA NEVADA", LATEST ISSUE; AND OTHER APPLICABLE APPROVED STANDARDS ISSUED BY THE CONTROLLING AGENCY; ALL LOCAL CITY CODES AND ORDINANCES APPLICABLE.

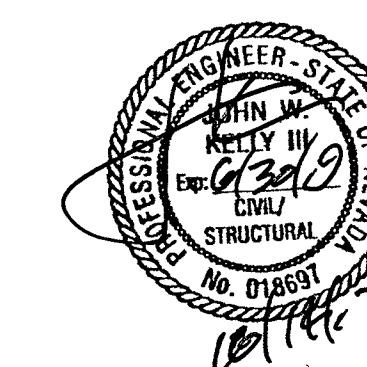


VG0017BA_51LAB
33TM0047SMC
 415.25 S 14TH ST
 LAS VEGAS, NV 89101

PROJECT NO: 113280.002
 CHECKED BY: CCC

ISSUED FOR:			
REV	DATE	DRWN	DESCRIPTION
B	5/24/17	MEH	PRELIMINARY REVIEW
C	6/8/17	RPS	PRELIMINARY REVIEW
D	8/28/17	JJD	PRELIMINARY REVIEW
E	9/8/17	CLM	PRELIMINARY REVIEW
O	10/14/17	CLM	CONSTRUCTION

B&T ENGINEERING, INC.
 12685
 Expires 12/31/17



IT IS A VIOLATION OF LAW FOR ANY PERSON, UNLESS THEY ARE ACTING UNDER THE DIRECTION OF A LICENSED PROFESSIONAL ENGINEER, TO ALTER THIS DOCUMENT.

SHEET NUMBER: **T-1** REVISION: **0**

GENERAL NOTES

THE FACILITY IS UNMANNED AND NOT FOR HUMAN HABITATION. A TECHNICIAN WILL VISIT THE SITE AS REQUIRED FOR ROUTINE MAINTENANCE. THE PROJECT WILL NOT RESULT IN ANY SIGNIFICANT DISTURBANCE OF EFFECT ON DRAINAGE; NO SANITARY SEWER SERVICE, POTABLE WATER OR TRASH DISPOSAL IS REQUIRED AND NO COMMERCIAL SIGNAGE IS PROPOSED.

SITE INFORMATION

PROPERTY OWNER: PUBLIC RIGHT-OF-WAY
 APPLICANT ADDRESS: BLUESTREAM PROFESSIONAL SERVICES, LLC
 33015 HIGHWAY 60 WEST FAIRBAULT, MN 55021 (507) 334-2268
 LAT/LONG TYPE: NAD 83
 LATITUDE: 36.16067323°
 LONGITUDE: -115.1330528°
 GROUND ELEVATION: ± 1957' AMSL
 JURISDICTION: CITY OF LAS VEGAS
 APN: 239-35-499-002
 CURRENT ZONING: N-1
 EXISTING LEASE AREA: N/A
 EXISTING OCCUPANCY: U
 PROJECT OCCUPANCY: U
 EQUIPMENT LOCATION: OUTDOOR
 ANTENNA LOCATION: EXISTING UTILITY STRAND

CONSULTANT TEAM

ARCHITECT/ENGINEER: B+T GROUP
 1717 S. BOULDER AVENUE TULSA, OK 74119
 CONTACT: VICTOR MCALISTER- PROJECT MNGR
 TEL: (918) 587-4630 FAX: (918) 295-0265
 CABLE OWNER/LANDLORD: COX COMMUNICATIONS, LLC
 1700 VEGAS DRIVE LAS VEGAS, NV 89106
 CONTACT: DANIELLE ETZBACH (404) 269-3997
 OWNER REP: COX COMMUNICATIONS
 1700 VEGAS DRIVE LAS VEGAS, NV 89106
 CONTACT: ANTHONY EBERSOLE (702) 545-1643
 DEVELOPER: COX NEVADA TELCOM, LLC
 ATTN: COX BUSINESS
 POWER: NV ENERGY (702) 633-8400
 FIBER: COX (702) 936-8898
 TELEPHONE: CENTURYLINK (702) 361-3332

CODES

2012 INTERNATIONAL BUILDING CODE W/ NV STATE AMENDMENTS
 2011 NATIONAL ELECTRICAL CODE W/ NV STATE AMENDMENTS

DO NOT SCALE DRAWINGS

CONTRACTORS SHALL VERIFY ALL PLANS, EXISTING DIMENSIONS & FIELD CONDITIONS ON THE JOB SITE & SHALL IMMEDIATELY NOTIFY THE ARCHITECT/ENGINEER IN WRITING OF ANY DISCREPANCIES BEFORE PROCEEDING WITH THE WORK OR BE RESPONSIBLE FOR SAME.

VICINITY MAP



NO SCALE

DRIVING DIRECTIONS

DEPART COX VEGAS OFFICE ON VEGAS DR. TURN LEFT ONTO LOCAL ROAD(S), TURN LEFT ONTO VEGAS DR. TURN RIGHT ONTO (N) MARTIN L KING BLVD, TURN LEFT ONTO NV-159 [W CHARLESTON BLVD]. KEEP STRAIGHT ONTO NV-159 [E CHARLESTON BLVD], TURN LEFT ONTO S 14TH ST AND ARRIVE AT 33TM0047SMC.

APPROVALS

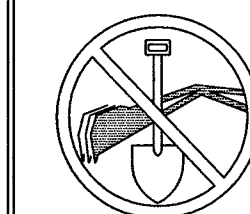
PROJECT MANAGER: _____ DATE: _____
 CONSTRUCTION MANAGER: _____ DATE: _____
 RF ENGINEER: _____ DATE: _____
 SITE ACQUISITION: _____ DATE: _____
 LANDLORD: _____ DATE: _____

PROJECT DESCRIPTION

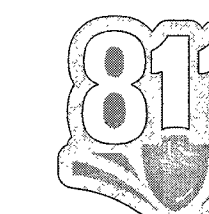
END USER PROPOSES TO INSTALL STRAND EQUIPMENT ON AN EXISTING OVERHEAD COX STRAND WITHIN AN EXISTING RIGHT-OF-WAY. THE SCOPE WILL CONSIST OF THE FOLLOWING:
 - INSTALL PROPOSED SMALL CELL STRAND EQUIPMENT ONTO EXISTING OVERHEAD COX STRAND

DRAWING INDEX

SHEET NO:	SHEET TITLE
T-1	TITLE SHEET
A-1	SITE PLAN
A-2	ELEVATION
A-3	EQUIPMENT DETAILS



CALL NEVADA ONE CALL
 (800) 227-2600
 CALL 3 WORKING DAYS
 BEFORE YOU DIG!

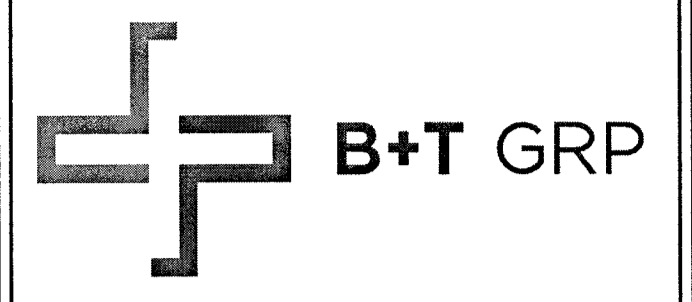
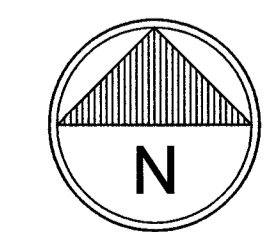
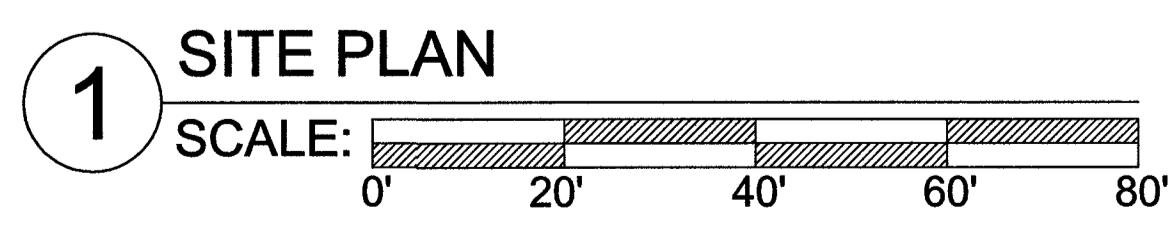
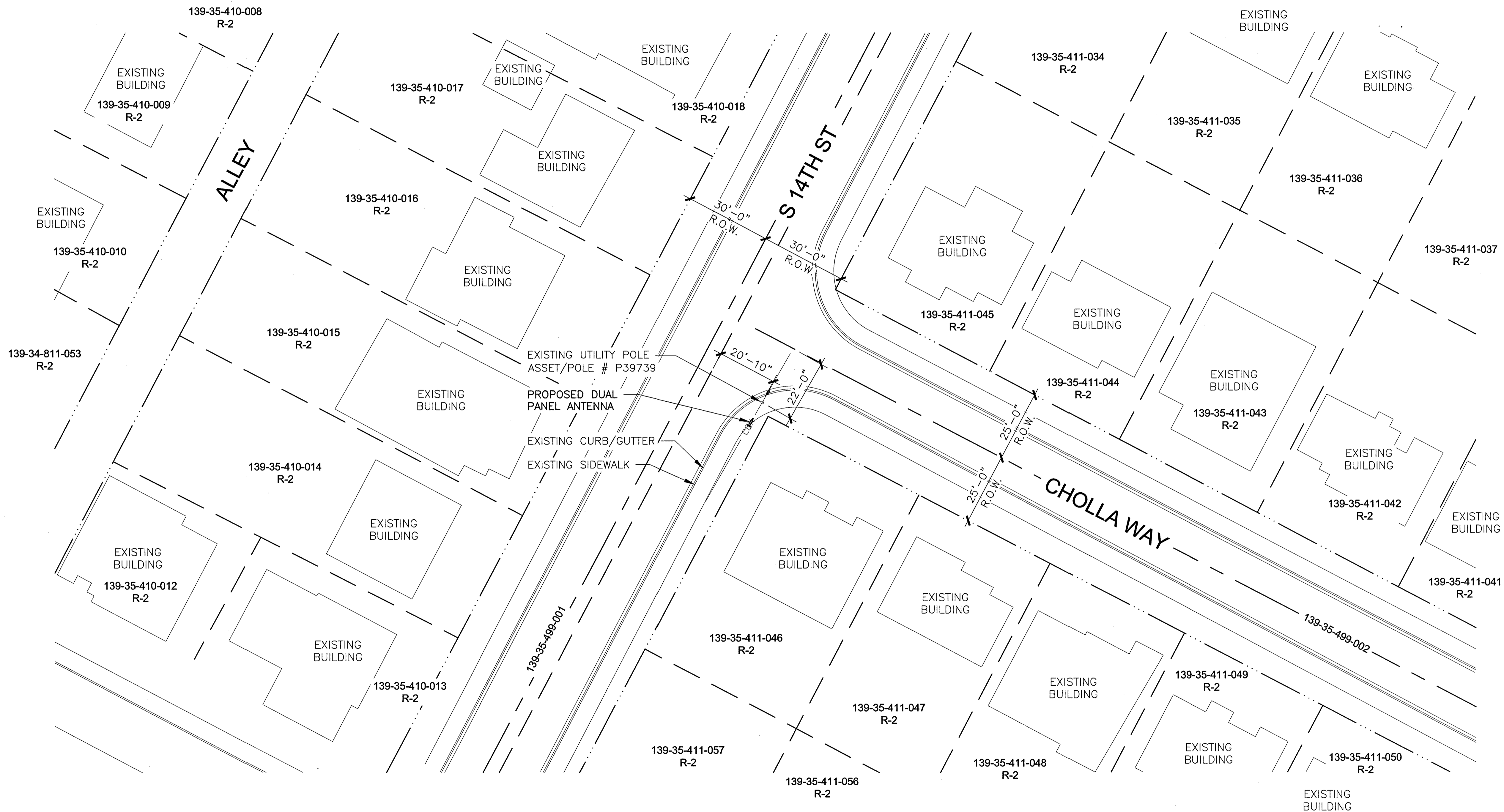


L17-01273 10/29/17

NOTE:
 THIS SITE PLAN WAS GENERATED WITHOUT THE USE OF A SURVEY. PROPERTY LINES, POWER & TELCO UTILITY POINT CONNECTIONS/ROUTES AND EASEMENTS SHOWN ON THESE PLANS ARE ESTIMATED. ALL ITEMS AND DIMENSIONS SHOULD BE VERIFIED IN THE FIELD.

LEGEND:

ROAD/EDGE OF PAVEMENT	
CENTERLINE OF R.O.W.	
RIGHT OF WAY	
PROPERTY LINE	
COX COM O/H LINE	



VG0017BA_51LAB
33TM0047SMC
 415.25 S 14TH ST
 LAS VEGAS, NV 89101

PROJECT NO: 113280.002
 CHECKED BY: CCC

ISSUED FOR:

REV	DATE	DRWN	DESCRIPTION
B	5/24/17	MEH	PRELIMINARY REVIEW
C	6/8/17	RPS	PRELIMINARY REVIEW
D	8/28/17	JJD	PRELIMINARY REVIEW
E	9/8/17	CLM	PRELIMINARY REVIEW
O	10/14/17	CLM	CONSTRUCTION

B&T ENGINEERING, INC.
 12685
 Expires 12/31/17



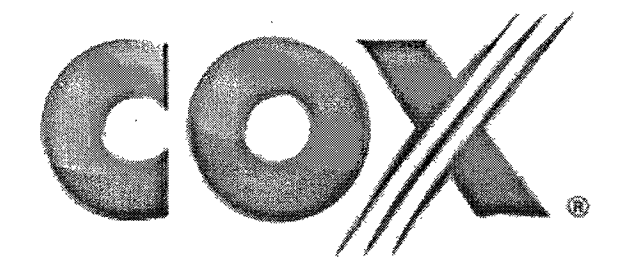
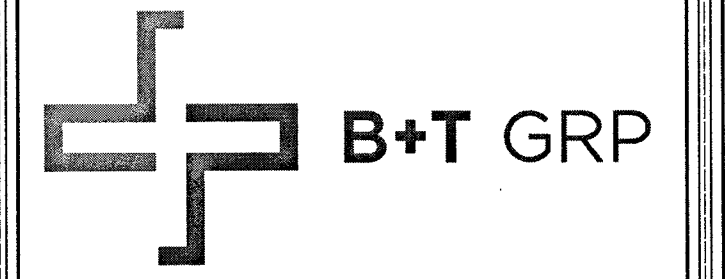
IT IS A VIOLATION OF LAW FOR ANY PERSON, UNLESS THEY ARE ACTING UNDER THE DIRECTION OF A LICENSED PROFESSIONAL ENGINEER, TO ALTER THIS DOCUMENT.

SHEET NUMBER:	REVISION:
A-1	0

113280_LVG0017BA51_33TM0047SMC.dwg - SheetA-1 - User: mwestel - Oct 14, 2017 - 3:09pm

417-01273 10/29/17

NOTE:
 PROJECT SCOPE OF WORK DOES NOT INCLUDE A STRUCTURAL EVALUATION OF THIS POLE OR STRUCTURE. NEW EQUIPMENT SHOWN ON THIS PLAN HAVE NOT BEEN EVALUATED TO VERIFY THE POLE OR STRUCTURE HAS THE CAPACITY TO ADEQUATELY SUPPORT THE EQUIPMENT. PRIOR TO ANY INSTALLATION, A STRUCTURAL EVALUATION OF THE POLE OR STRUCTURE SHOULD BE PERFORMED.



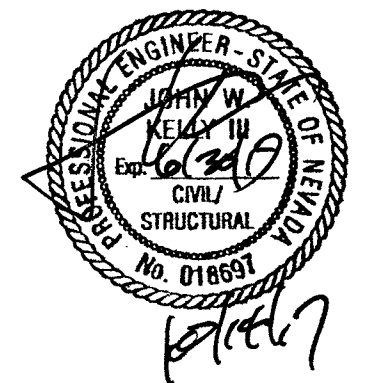
VG0017BA_51LAB
 33TM0047SMC
 415.25 S 14TH ST
 LAS VEGAS, NV 89101

PROJECT NO: 113280.002
 CHECKED BY: CCC

ISSUED FOR:

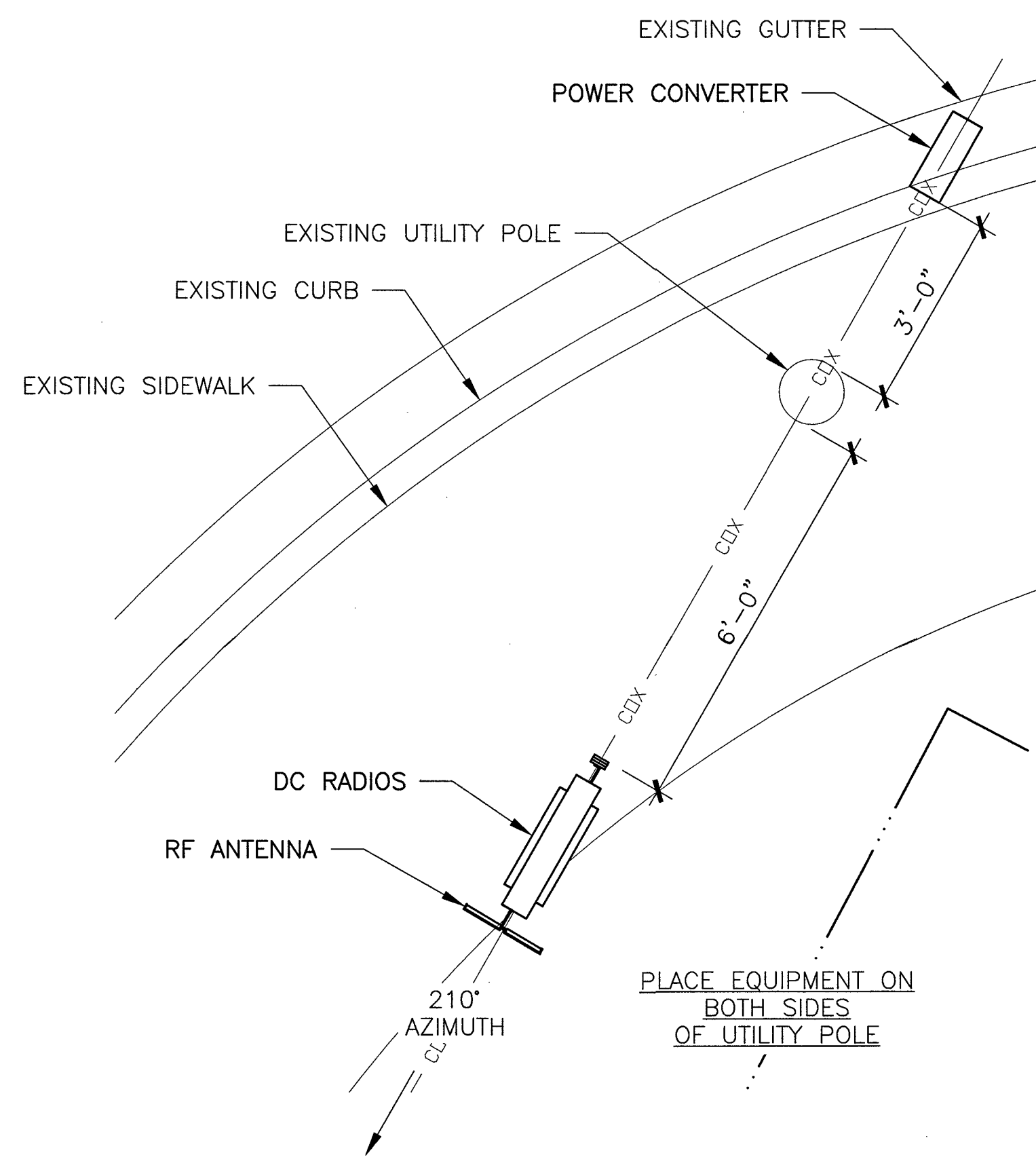
REV	DATE	DRWN	DESCRIPTION
B	5/24/17	MEH	PRELIMINARY REVIEW
C	6/8/17	RPS	PRELIMINARY REVIEW
D	8/28/17	JJD	PRELIMINARY REVIEW
E	9/8/17	CLM	PRELIMINARY REVIEW
O	10/14/17	CLM	CONSTRUCTION

B&T ENGINEERING, INC.
 12685
 Expires 12/31/17

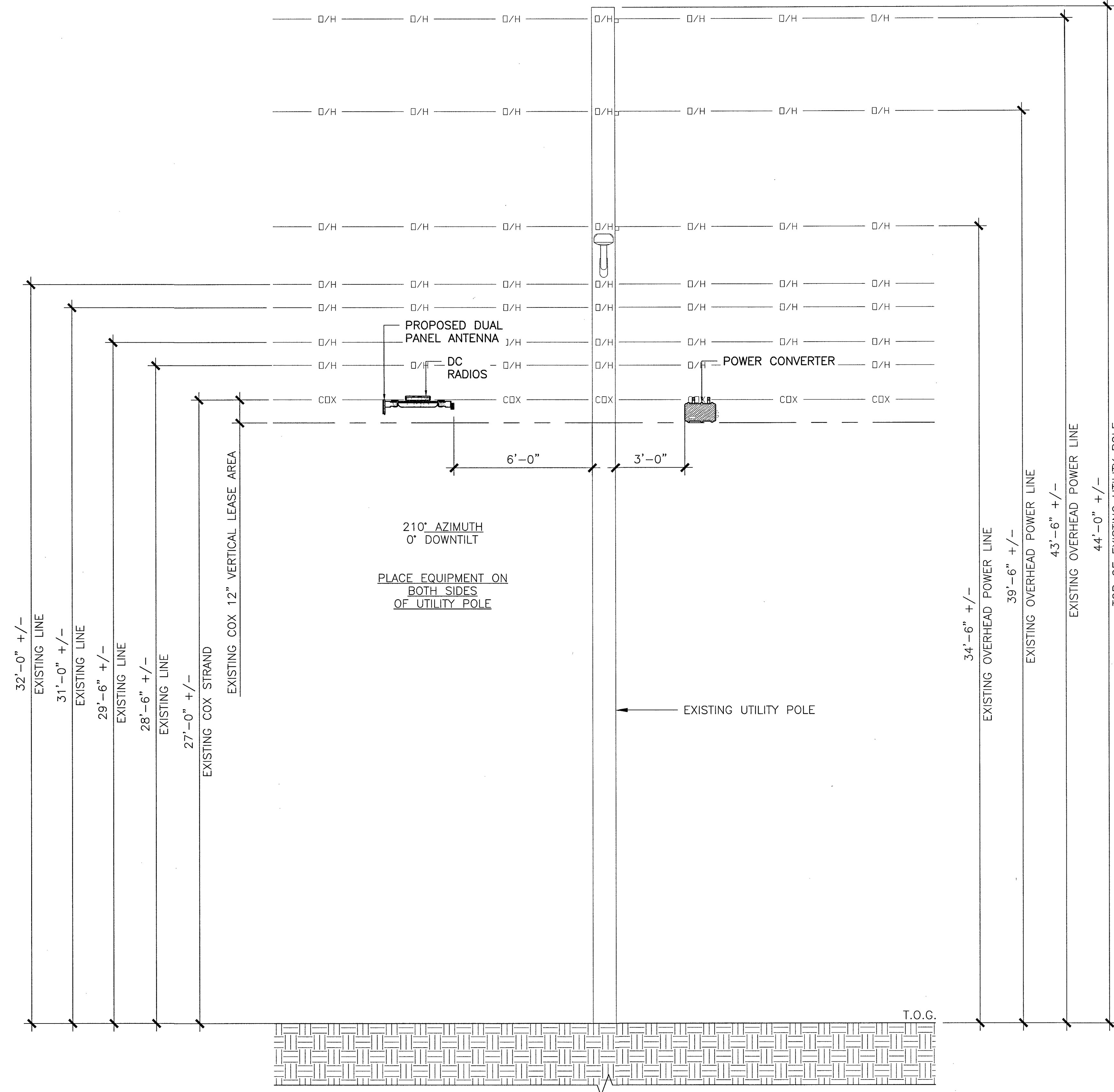
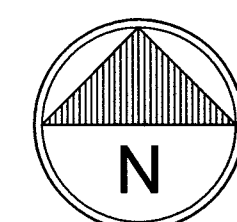


IT IS A VIOLATION OF LAW FOR ANY PERSON, UNLESS THEY ARE ACTING UNDER THE DIRECTION OF A LICENSED PROFESSIONAL ENGINEER, TO ALTER THIS DOCUMENT.

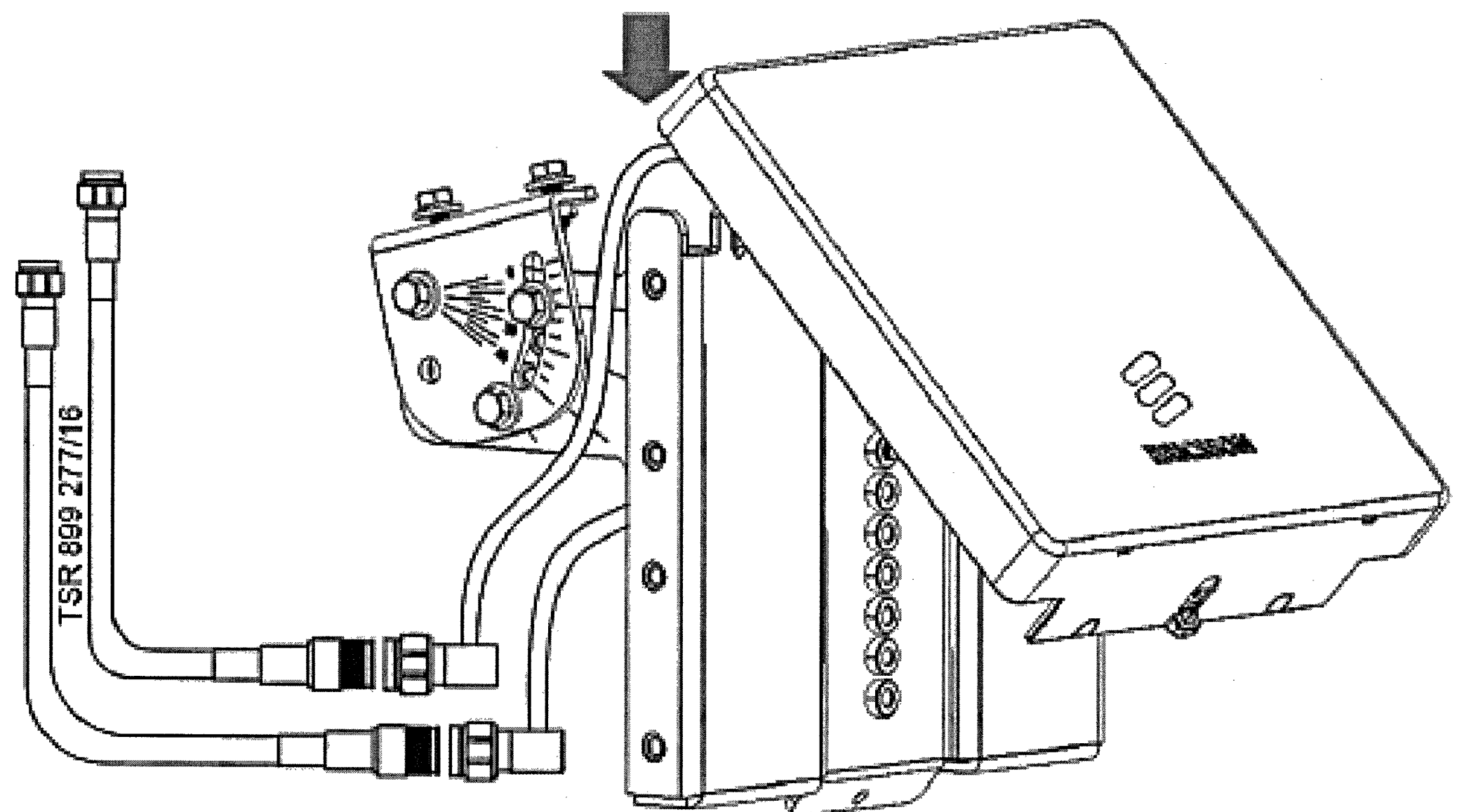
SHEET NUMBER: A-2
 REVISION: 0



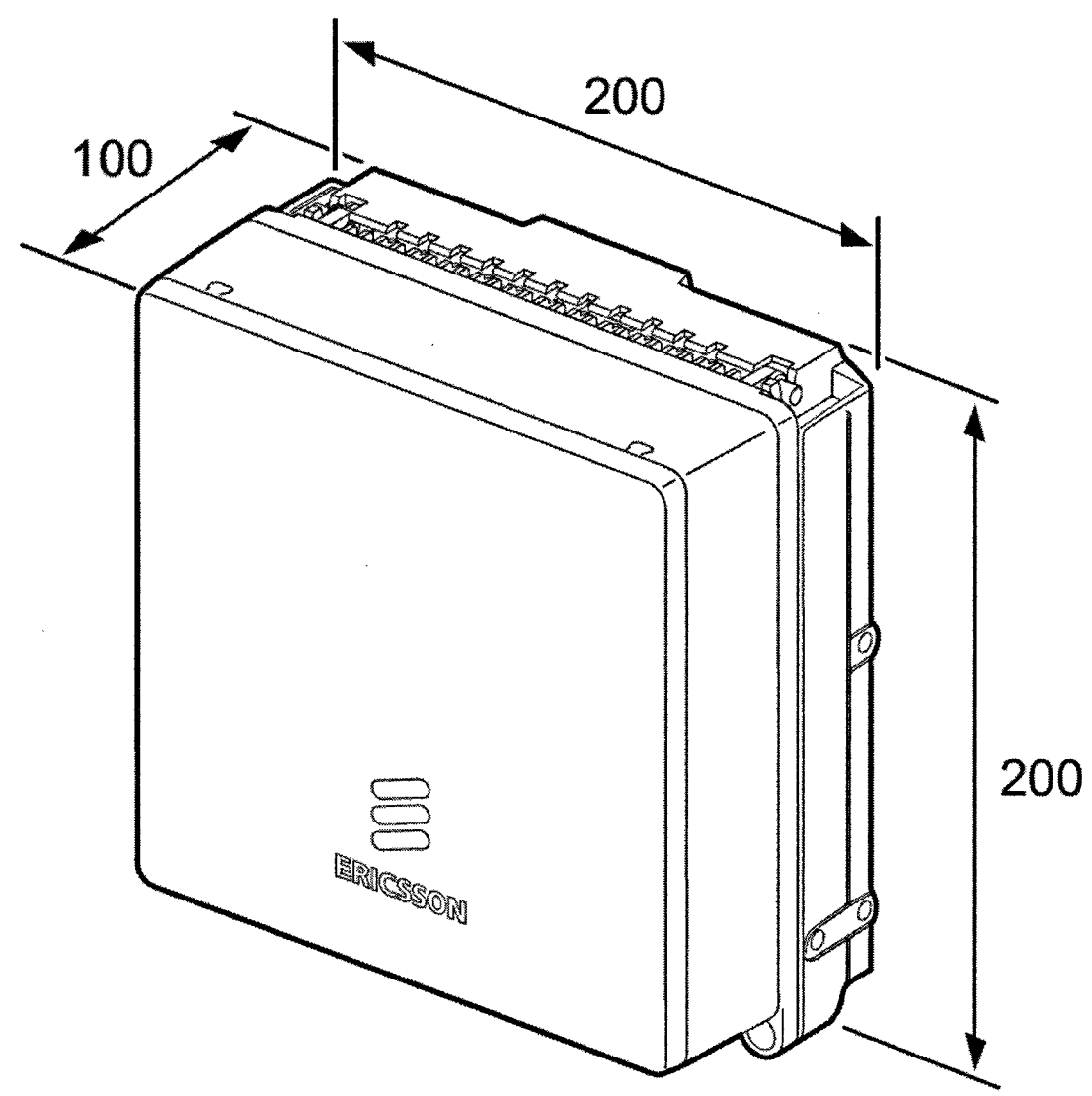
1 ENLARGED SITEPLAN
 SCALE: 0' 1' 2' 4' 10'



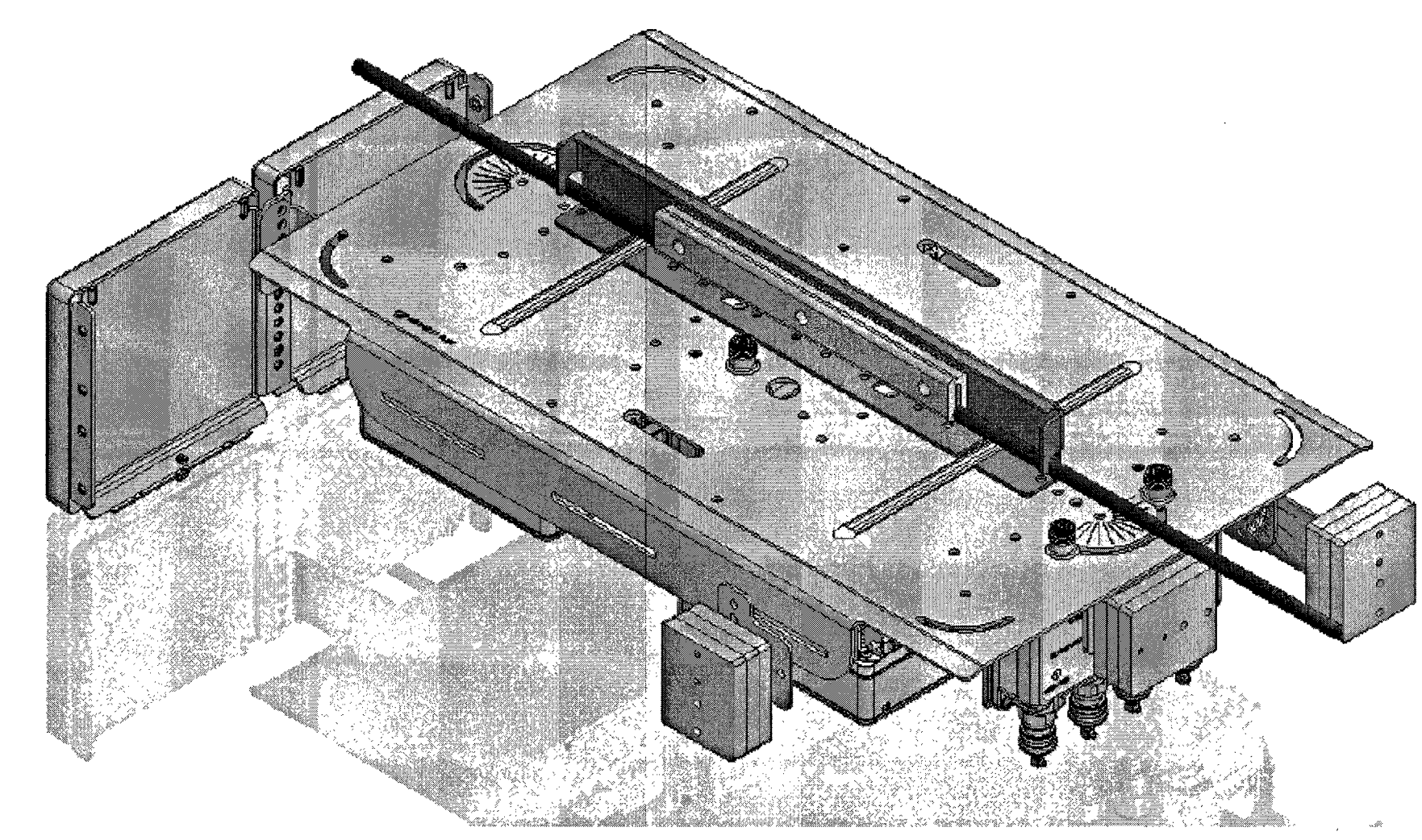
2 EAST ELEVATION
 SCALE: 0' 1' 4' 8' 16'



PANEL ANTENNA
 DIMENSIONS: 200x200x19 (mm)
 WEIGHT: 0.5 kgs

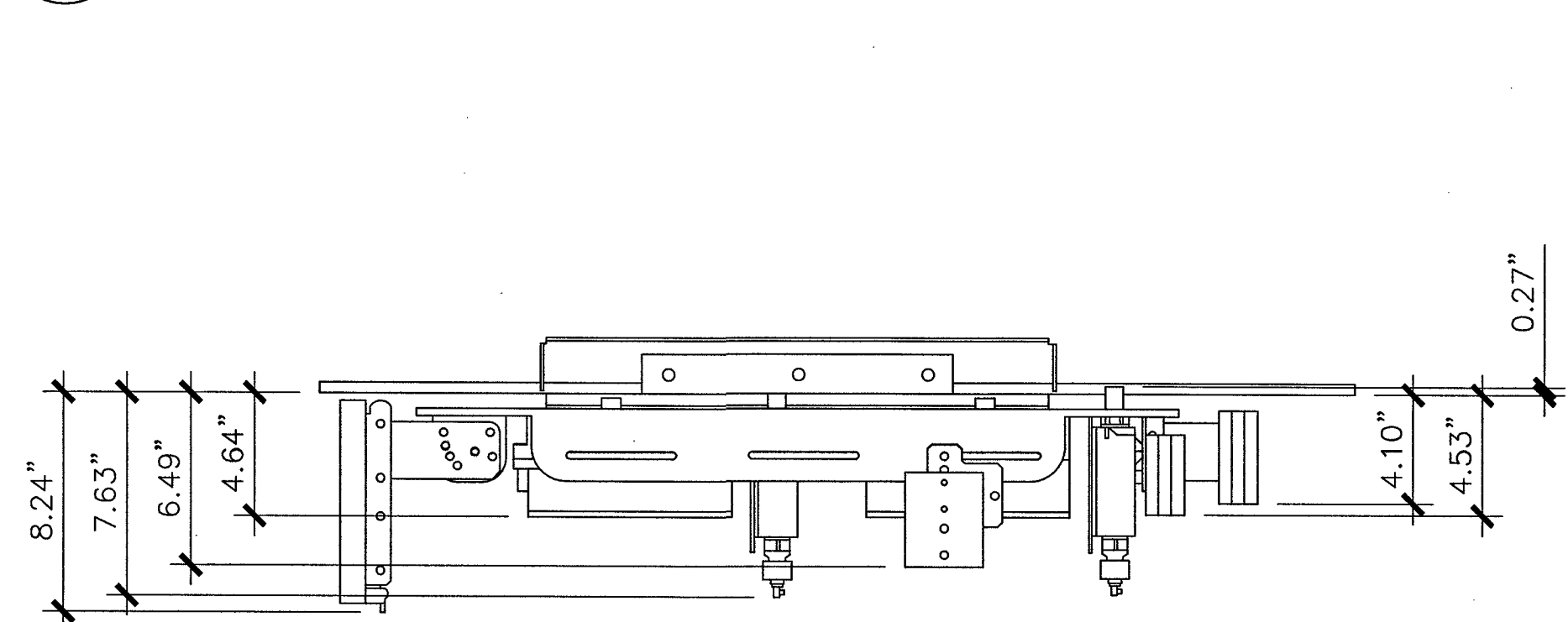


RADIO 2203
 DIMENSIONS W/O ANT.: 200x200x100 (mm)
 WEIGHT: 4.5 kgs
 POWER TYPE: DC POWER

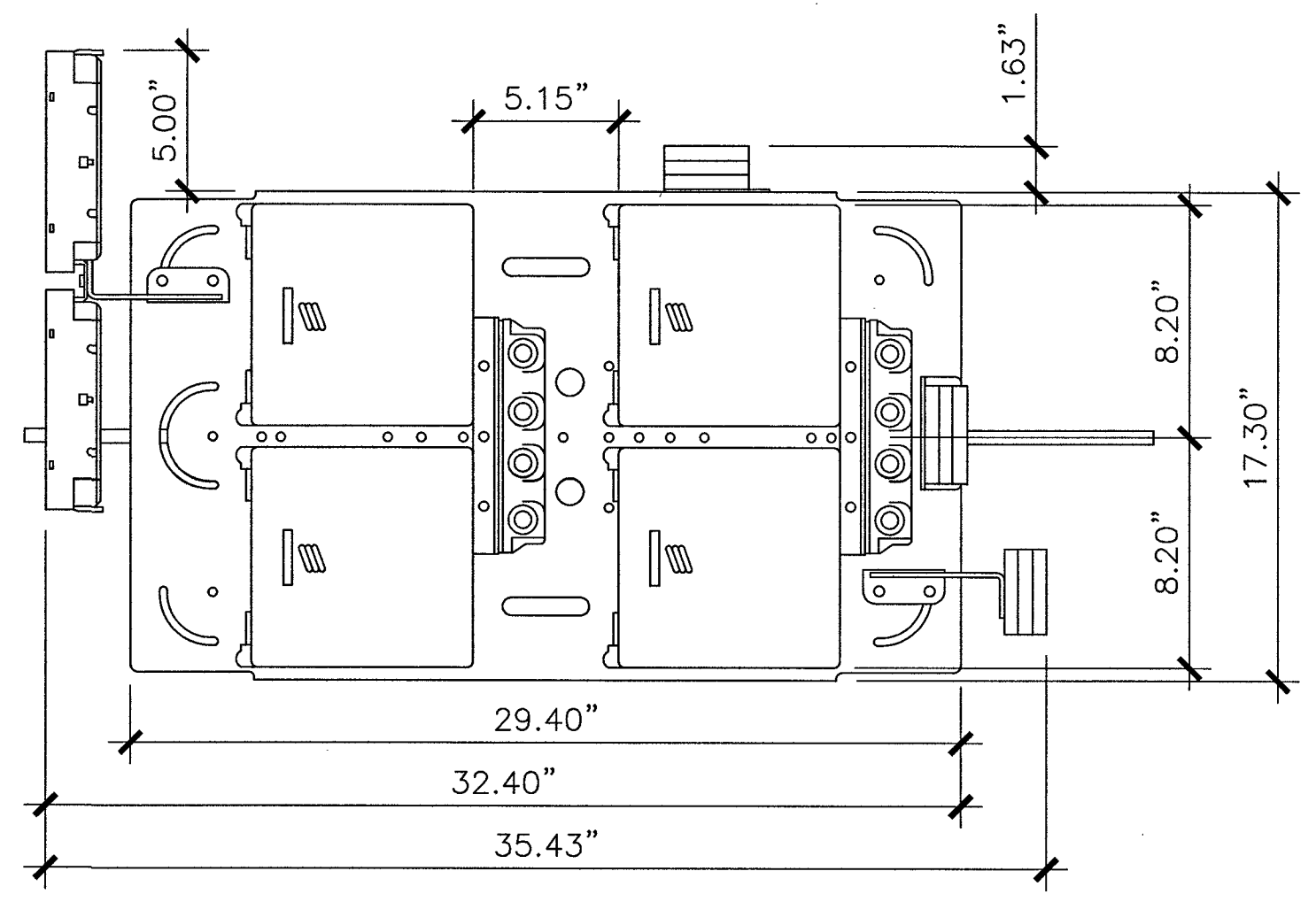


DUAL PANEL ANTENNA STRAND MOUNT CONFIGURATION
 DIMENSIONS: 35.43"x17.3"x8.24" (LxWxH)
 WEIGHT: 65 LBS (MAX)
 STRAND SIZES: 1/4"φ - 7/16"φ

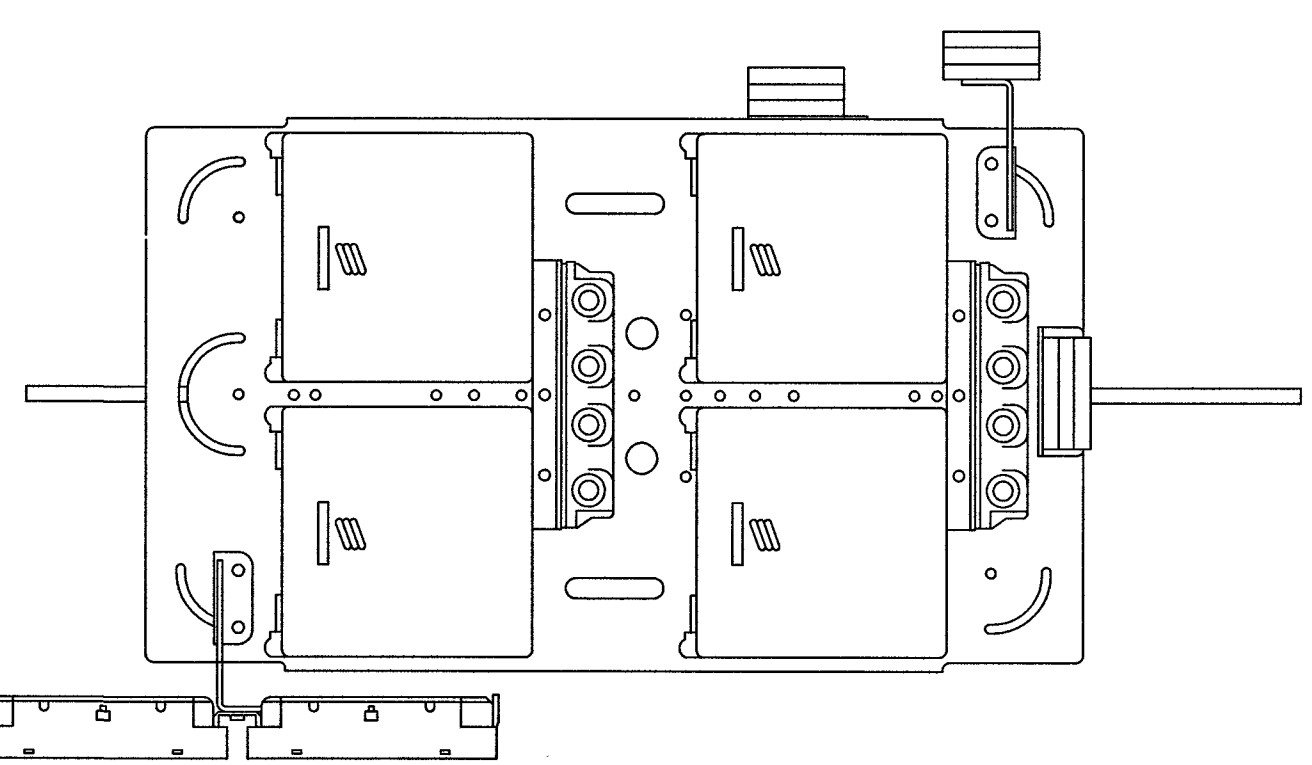
1 ANTENNA & RADIO STRAND MOUNT DETAILS & CONFIGURATION
 SCALE: N.T.S.



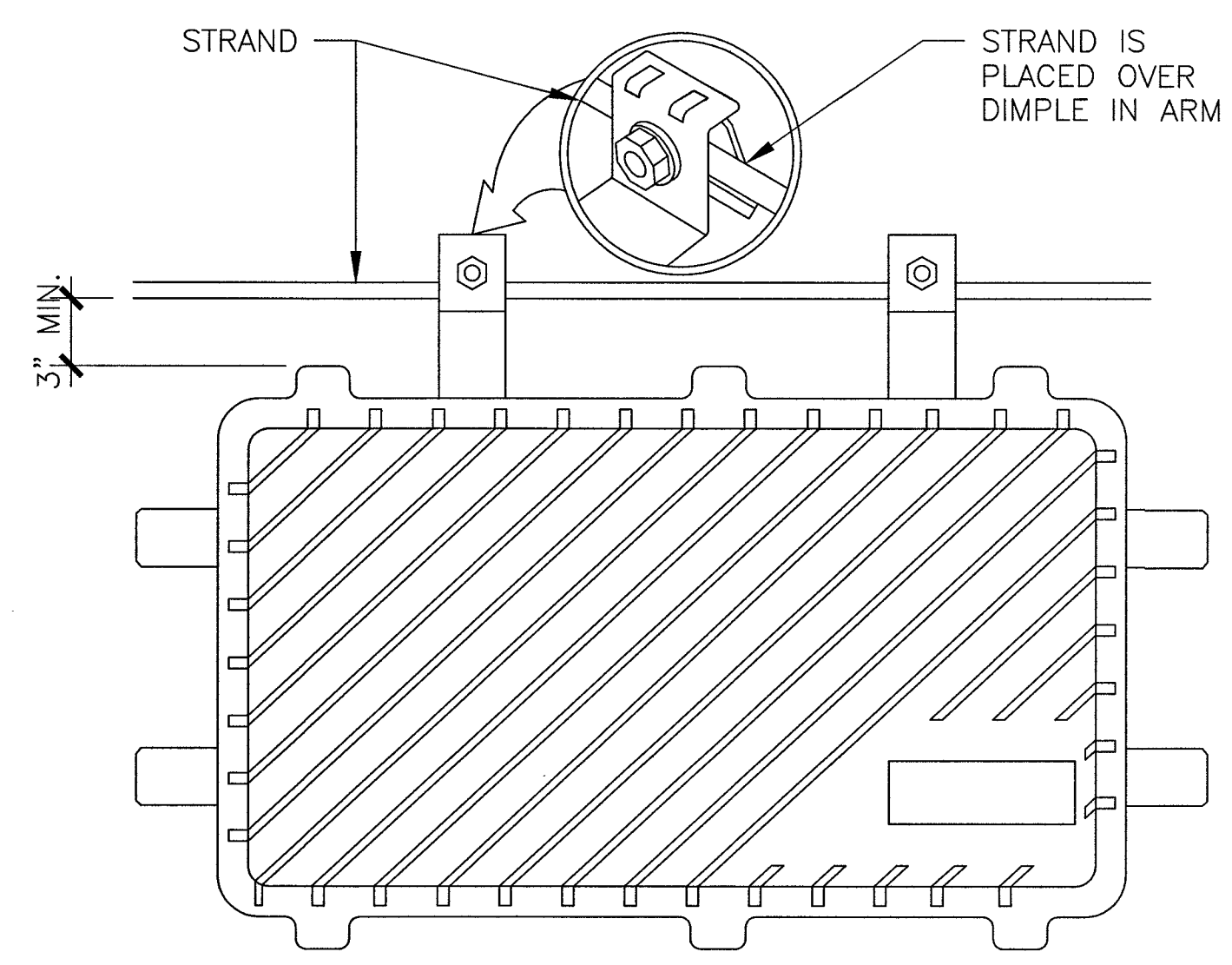
SIDE VIEW (0° AZIMUTH)



TOP VIEW (0° AZIMUTH)



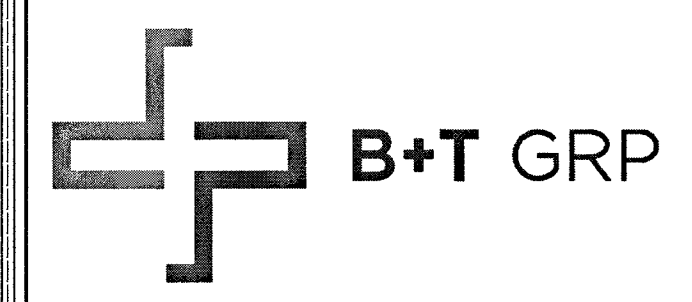
TOP VIEW (90° AZIMUTH)



SPECIFICATIONS
 MODEL: LBPS-400-4
 DIMENSIONS: 20"x10"x8.5"
 WEIGHT W/ BRACKET: 25 LBS

3 LINDSAY POWER CONVERTER DETAIL
 SCALE: N.T.S.

2 DUAL PANEL ANTENNA & RADIO STRAND MOUNT
 SCALE: N.T.S.



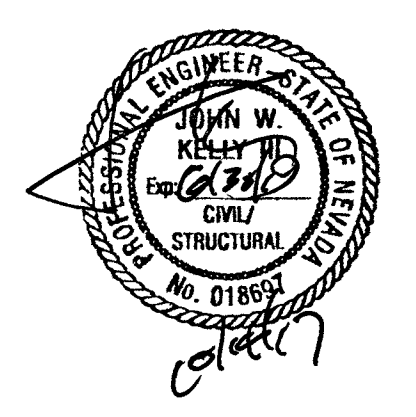
VG0017BA_51LAB
33TM0047SMC
 415.25 S 14TH ST
 LAS VEGAS, NV 89101

PROJECT NO: 113280.002
 CHECKED BY: CCC

ISSUED FOR:

REV	DATE	DRWN	DESCRIPTION
B	5/24/17	MEH	PRELIMINARY REVIEW
C	6/8/17	RPS	PRELIMINARY REVIEW
D	8/28/17	JJD	PRELIMINARY REVIEW
E	9/8/17	CLM	PRELIMINARY REVIEW
O	10/14/17	CLM	CONSTRUCTION

B&T ENGINEERING, INC.
 12685
 Expires 12/31/17



IT IS A VIOLATION OF LAW FOR ANY PERSON, UNLESS THEY ARE ACTING UNDER THE DIRECTION OF A LICENSED PROFESSIONAL ENGINEER, TO ALTER THIS DOCUMENT.

SHEET NUMBER: **A-3** REVISION: **0**