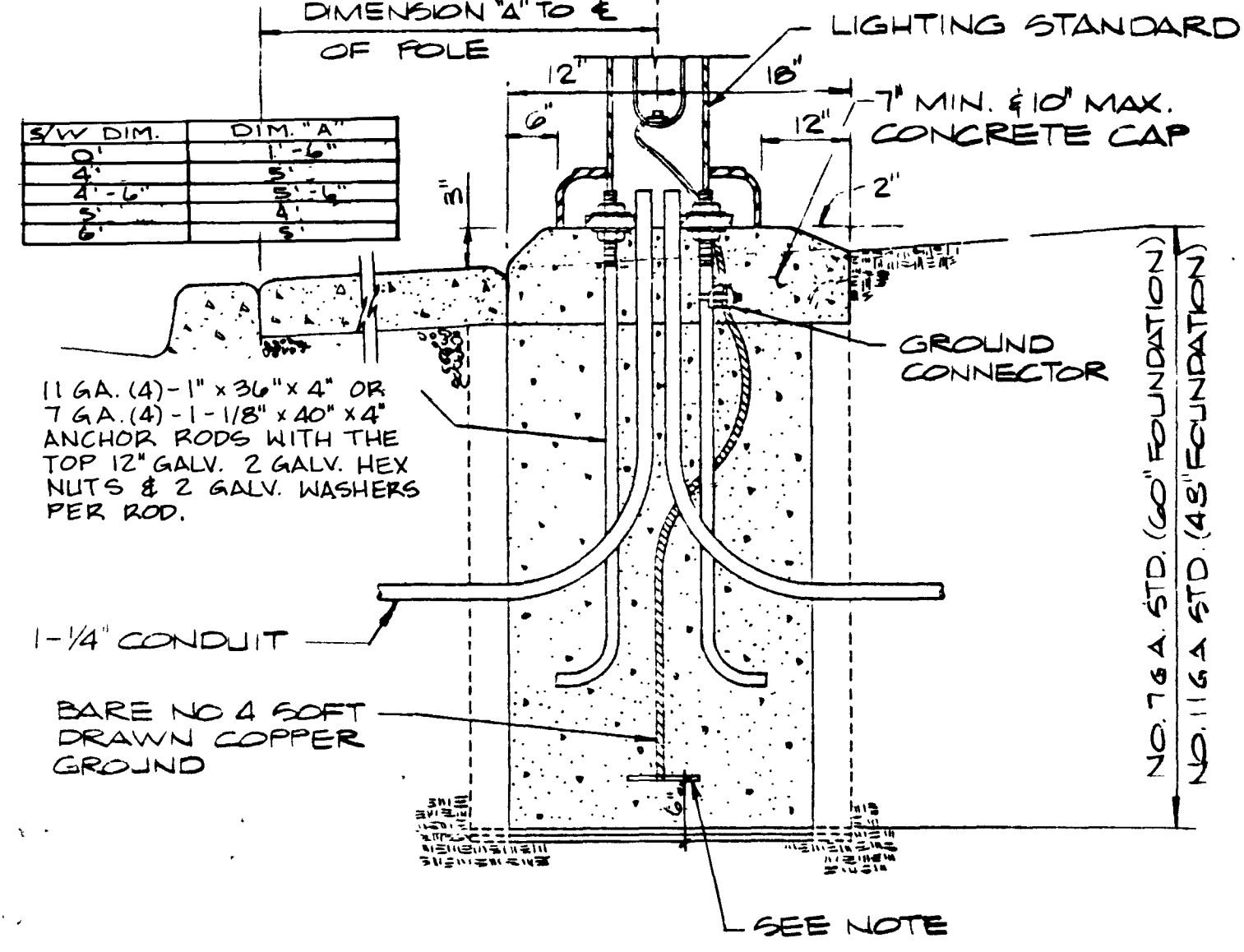
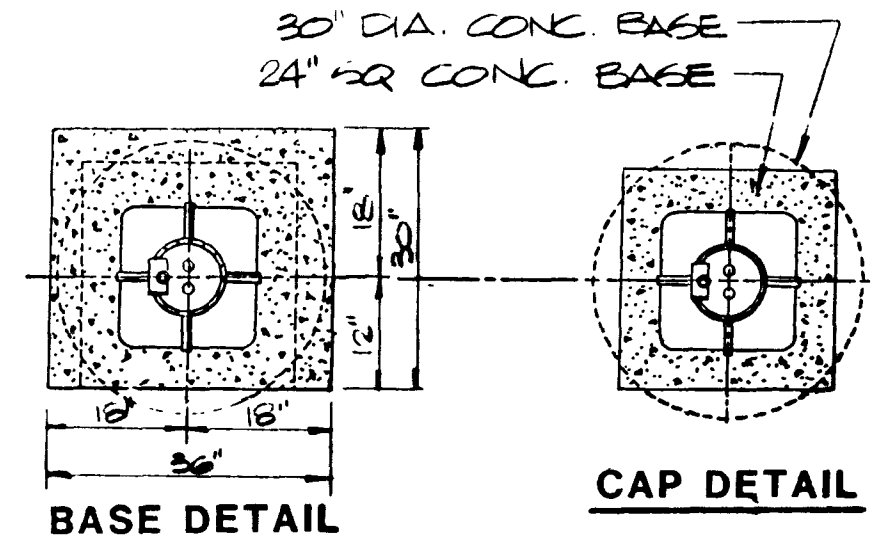
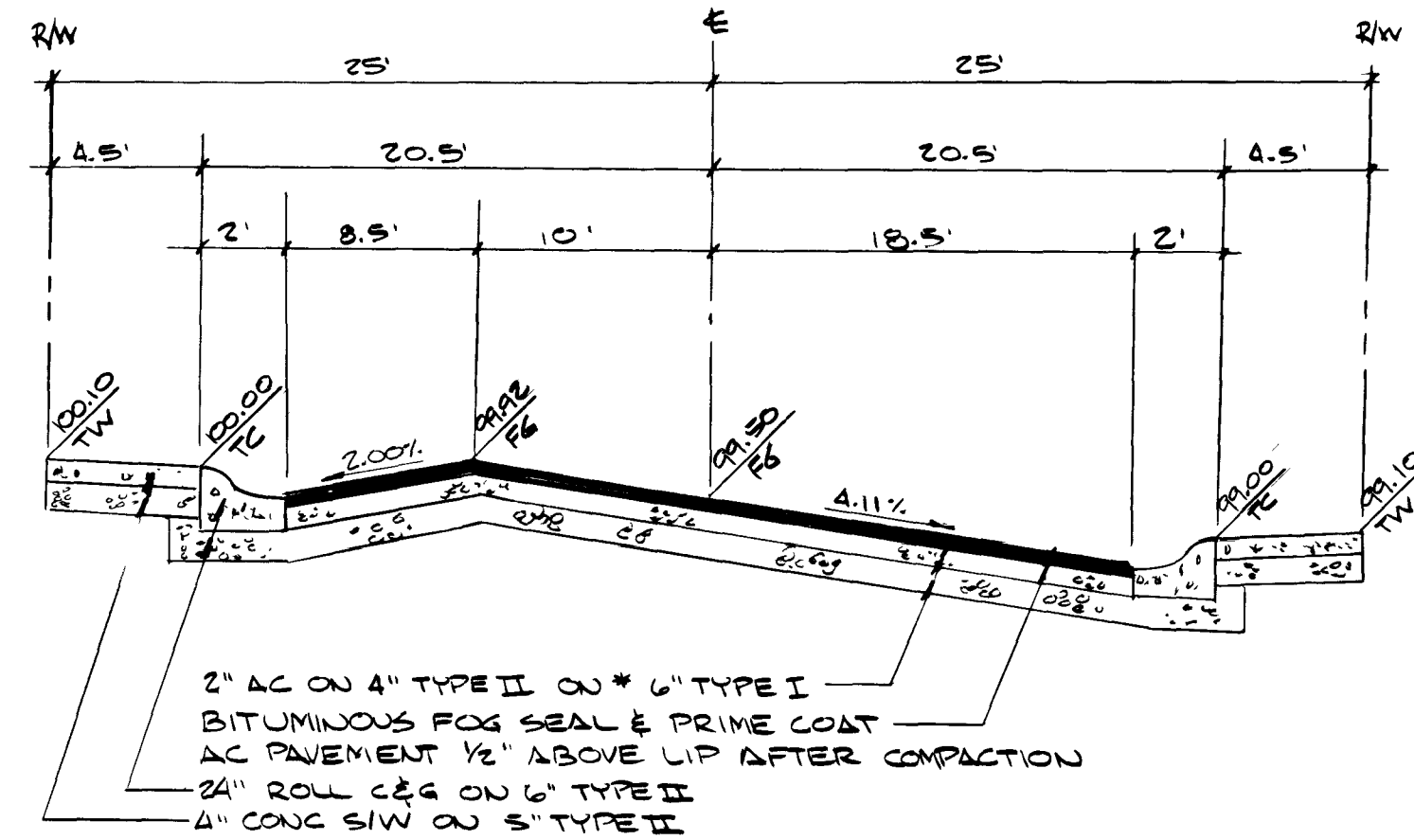


- NOTE:**
- MADE ELECTRODE SHALL BE IN ACCORDANCE WITH ARTICLE 250-83 OF THE NATIONAL ELECTRICAL CODE
  - TOP OF SLOPE IS DOWN AND AWAY FROM THE STANDARD FOR DRAINAGE

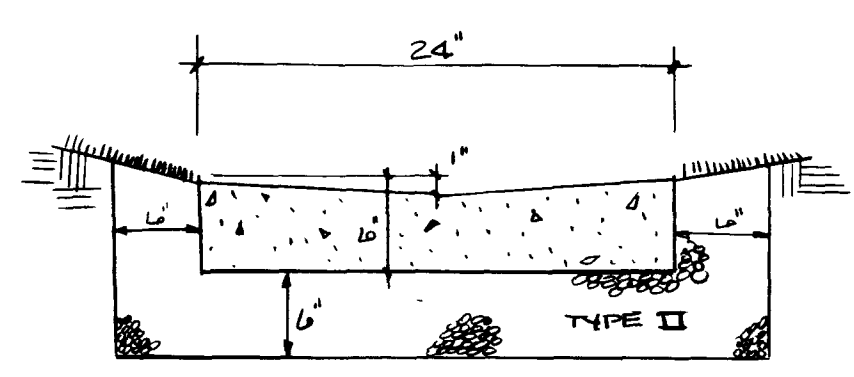


STREET LIGHT DETAIL

\* NATIVE MATERIAL MAY BE USED IN LIEU OF TYPE I IF APPROVED BY THE SOILS ENGINEER AND THE CITY OF LAS VEGAS, AND "PROCESSED IN ACCORDANCE WITH C.L.V. STATEMENT OF POLICY" FOR USE OF NATIVE MATERIAL IN LIEU OF IMPORTED TYPE I BASE, DATE JULY 25, 1984.



50' TYPICAL STREET SECTION  
1 FOOT CROSSFALL



24" CONCRETE SWALE

**LINE DATA TABLE**

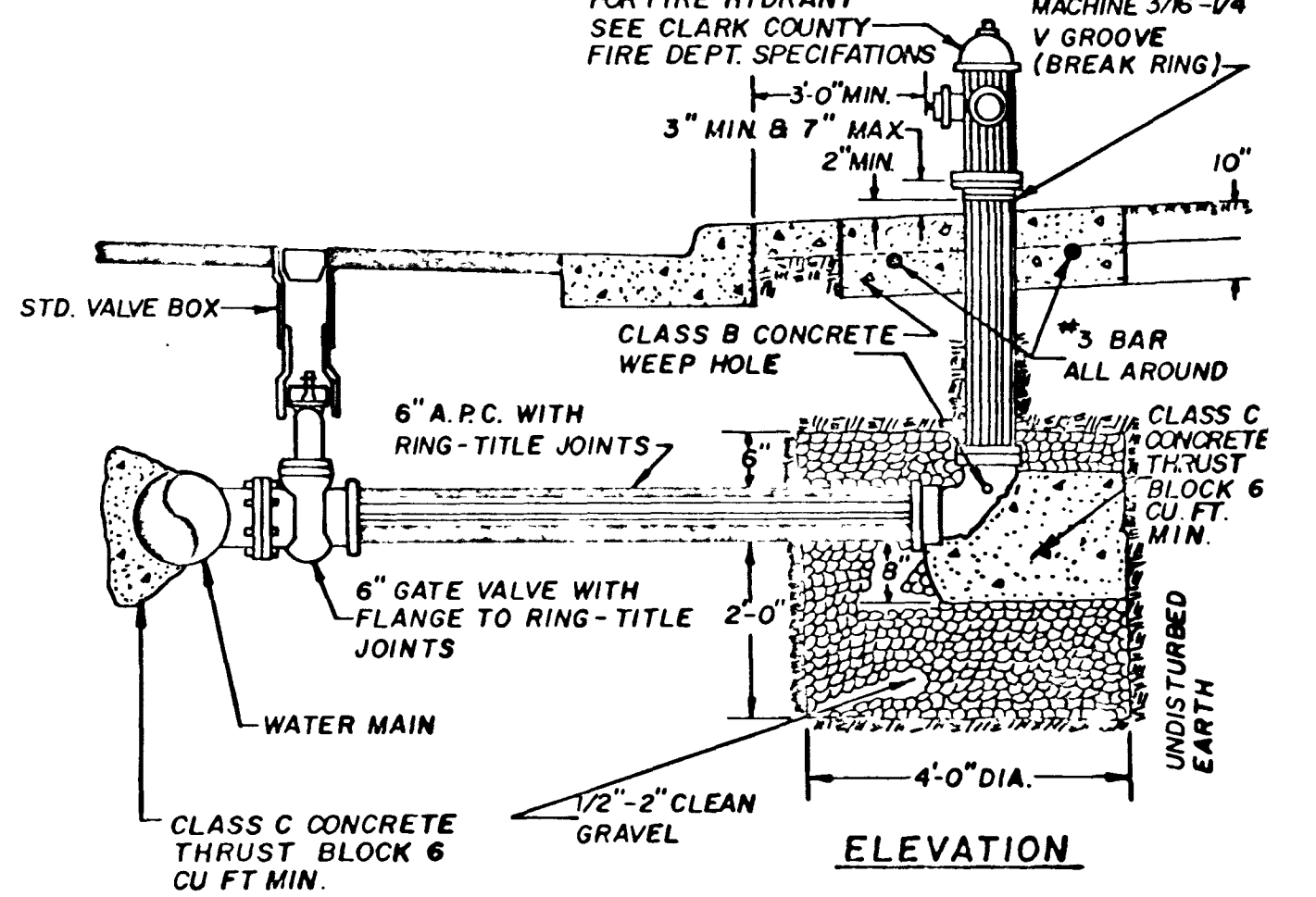
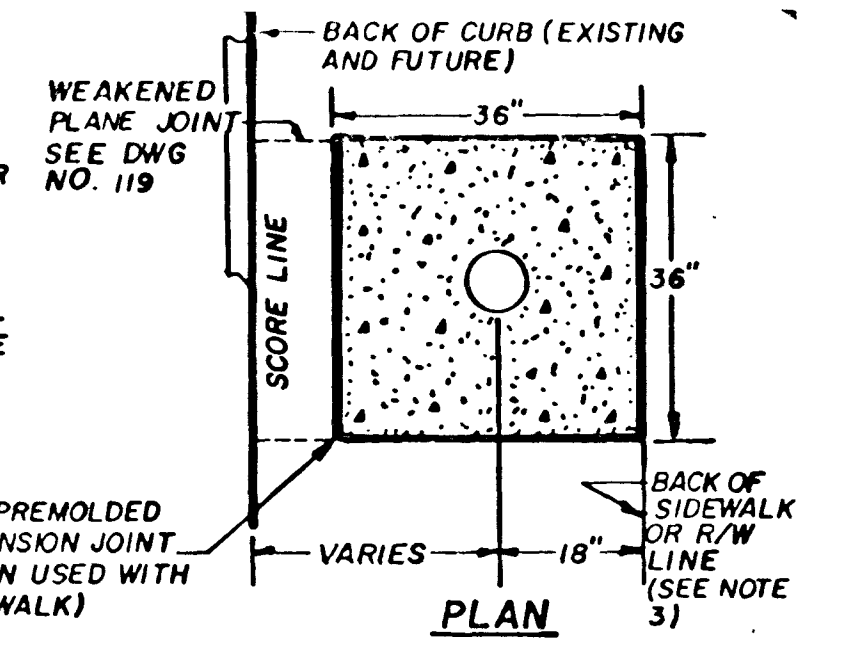
LINE	BEARING	DISTANCE
L1	S 83° 11' 33" E	4.80
L2	N 47° 45' 30" E	4.80
L3	S 89° 33' E	15.33
L4	N 27° 45' 30" E	10.00
L5	N 49° 14' 21" E	6.30
L6	N 27° 45' 30" E	5.00
L7	N 49° 14' 21" E	6.30
L8	N 27° 45' 30" E	10.00
L9	N 0° 20' 37" E	27.00
L10	S 80° 38' 32" E	27.00
L11	S 89° 18' 39" E	5.88
L12	S 0° 20' 37" E	27.00
L13	S 80° 38' 32" E	27.00
L14	N 49° 14' 21" E	6.30
L15	N 27° 45' 30" E	10.00
L16	N 49° 14' 21" E	6.30
L17	N 27° 45' 30" E	10.00
L18	S 89° 17' 35" E	17.95
L19	S 89° 17' 35" E	17.95
L20	N 89° 17' 35" E	17.95
L21	N 0° 20' 37" E	27.00
L22	S 89° 17' 35" E	17.95
L23	S 89° 17' 35" E	17.95
L24	S 89° 17' 35" E	17.95
L25	S 89° 17' 35" E	17.95
L26	S 89° 17' 35" E	17.95
L27	S 89° 17' 35" E	17.95
L28	S 89° 17' 35" E	17.95
L29	S 89° 17' 35" E	17.95
L30	S 89° 17' 35" E	17.95

**CURVE DATA TABLE**

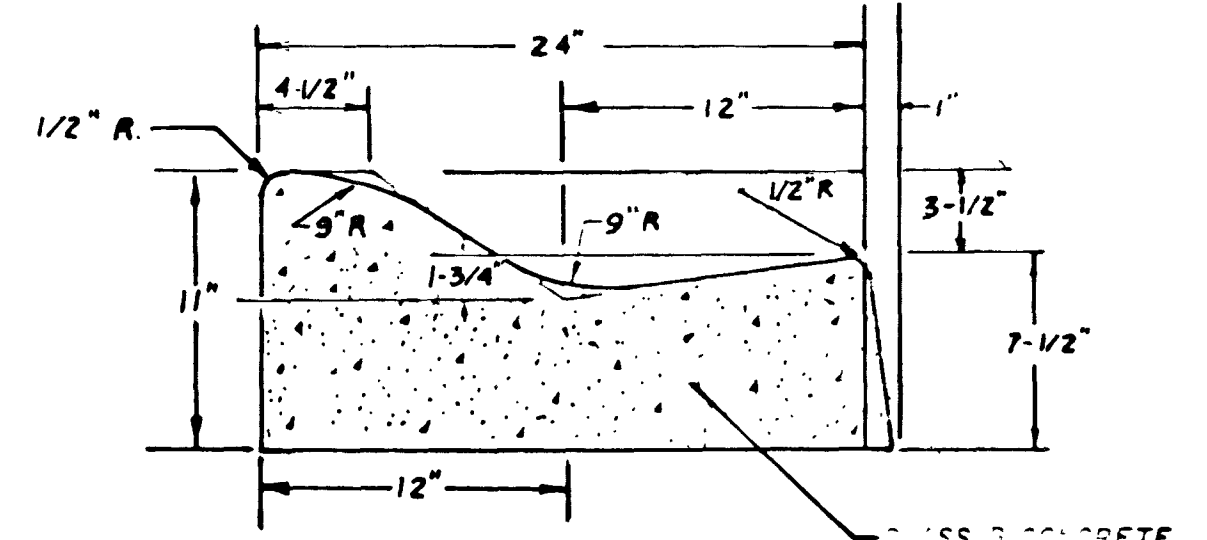
CURVE	ARC	DELTA	RADIUS	TAN LENGTH
C01	115.00	9° 14' 18"	800.00	27.80
C02	24.21	22° 28' 28"	15.00	18.88
C03	18.78	22° 28' 28"	15.00	18.88
C04	18.91	22° 28' 28"	15.00	18.88
C05	18.91	22° 28' 28"	15.00	18.88
C06	18.91	22° 28' 28"	15.00	18.88
C07	18.91	22° 28' 28"	15.00	18.88
C08	18.91	22° 28' 28"	15.00	18.88
C09	18.91	22° 28' 28"	15.00	18.88
C10	18.91	22° 28' 28"	15.00	18.88
C11	18.91	22° 28' 28"	15.00	18.88
C12	18.91	22° 28' 28"	15.00	18.88
C13	18.91	22° 28' 28"	15.00	18.88
C14	18.91	22° 28' 28"	15.00	18.88
C15	18.91	22° 28' 28"	15.00	18.88
C16	18.91	22° 28' 28"	15.00	18.88
C17	18.91	22° 28' 28"	15.00	18.88
C18	18.91	22° 28' 28"	15.00	18.88
C19	18.91	22° 28' 28"	15.00	18.88
C20	115.00	9° 14' 18"	800.00	27.80
C21	115.00	9° 14' 18"	800.00	27.80
C22	115.00	9° 14' 18"	800.00	27.80
C23	115.00	9° 14' 18"	800.00	27.80
C24	115.00	9° 14' 18"	800.00	27.80
C25	115.00	9° 14' 18"	800.00	27.80
C26	115.00	9° 14' 18"	800.00	27.80
C27	115.00	9° 14' 18"	800.00	27.80
C28	115.00	9° 14' 18"	800.00	27.80
C29	115.00	9° 14' 18"	800.00	27.80
C30	115.00	9° 14' 18"	800.00	27.80
C31	115.00	9° 14' 18"	800.00	27.80
C32	115.00	9° 14' 18"	800.00	27.80
C33	115.00	9° 14' 18"	800.00	27.80
C34	115.00	9° 14' 18"	800.00	27.80
C35	115.00	9° 14' 18"	800.00	27.80
C36	115.00	9° 14' 18"	800.00	27.80
C37	115.00	9° 14' 18"	800.00	27.80
C38	115.00	9° 14' 18"	800.00	27.80
C39	115.00	9° 14' 18"	800.00	27.80
C40	115.00	9° 14' 18"	800.00	27.80
C41	115.00	9° 14' 18"	800.00	27.80
C42	115.00	9° 14' 18"	800.00	27.80
C43	115.00	9° 14' 18"	800.00	27.80
C44	115.00	9° 14' 18"	800.00	27.80
C45	115.00	9° 14' 18"	800.00	27.80
C46	115.00	9° 14' 18"	800.00	27.80
C47	115.00	9° 14' 18"	800.00	27.80
C48	115.00	9° 14' 18"	800.00	27.80
C49	115.00	9° 14' 18"	800.00	27.80
C50	115.00	9° 14' 18"	800.00	27.80
C51	115.00	9° 14' 18"	800.00	27.80
C52	115.00	9° 14' 18"	800.00	27.80
C53	115.00	9° 14' 18"	800.00	27.80
C54	115.00	9° 14' 18"	800.00	27.80
C55	115.00	9° 14' 18"	800.00	27.80
C56	115.00	9° 14' 18"	800.00	27.80
C57	115.00	9° 14' 18"	800.00	27.80
C58	115.00	9° 14' 18"	800.00	27.80
C59	115.00	9° 14' 18"	800.00	27.80
C60	115.00	9° 14' 18"	800.00	27.80
C61	115.00	9° 14' 18"	800.00	27.80
C62	115.00	9° 14' 18"	800.00	27.80
C63	115.00	9° 14' 18"	800.00	27.80
C64	115.00	9° 14' 18"	800.00	27.80
C65	115.00	9° 14' 18"	800.00	27.80
C66	115.00	9° 14' 18"	800.00	27.80
C67	115.00	9° 14' 18"	800.00	27.80
C68	115.00	9° 14' 18"	800.00	27.80
C69	115.00	9° 14' 18"	800.00	27.80
C70	115.00	9° 14' 18"	800.00	27.80
C71	115.00	9° 14' 18"	800.00	27.80
C72	115.00	9° 14' 18"	800.00	27.80
C73	115.00	9° 14' 18"	800.00	27.80
C74	115.00	9° 14' 18"	800.00	27.80
C75	115.00	9° 14' 18"	800.00	27.80
C76	115.00	9° 14' 18"	800.00	27.80
C77	115.00	9° 14' 18"	800.00	27.80
C78	115.00	9° 14' 18"	800.00	27.80
C79	115.00	9° 14' 18"	800.00	27.80
C80	115.00	9° 14' 18"	800.00	27.80
C81	115.00	9° 14' 18"	800.00	27.80
C82	115.00	9° 14' 18"	800.00	27.80
C83	115.00	9° 14' 18"	800.00	27.80
C84	115.00	9° 14' 18"	800.00	27.80
C85	115.00	9° 14' 18"	800.00	27.80
C86	115.00	9° 14' 18"	800.00	27.80
C87	115.00	9° 14' 18"	800.00	27.80
C88	115.00	9° 14' 18"	800.00	27.80
C89	115.00	9° 14' 18"	800.00	27.80
C90	115.00	9° 14' 18"	800.00	27.80
C91	115.00	9° 14' 18"	800.00	27.80
C92	115.00	9° 14' 18"	800.00	27.80
C93	115.00	9° 14' 18"	800.00	27.80
C94	115.00	9° 14' 18"	800.00	27.80
C95	115.00	9° 14' 18"	800.00	27.80
C96	115.00	9° 14' 18"	800.00	27.80
C97	115.00	9° 14' 18"	800.00	27.80
C98	115.00	9° 14' 18"	800.00	27.80
C99	115.00	9° 14' 18"	800.00	27.80
C100	115.00	9° 14' 18"	800.00	27.80

**NOTES:**

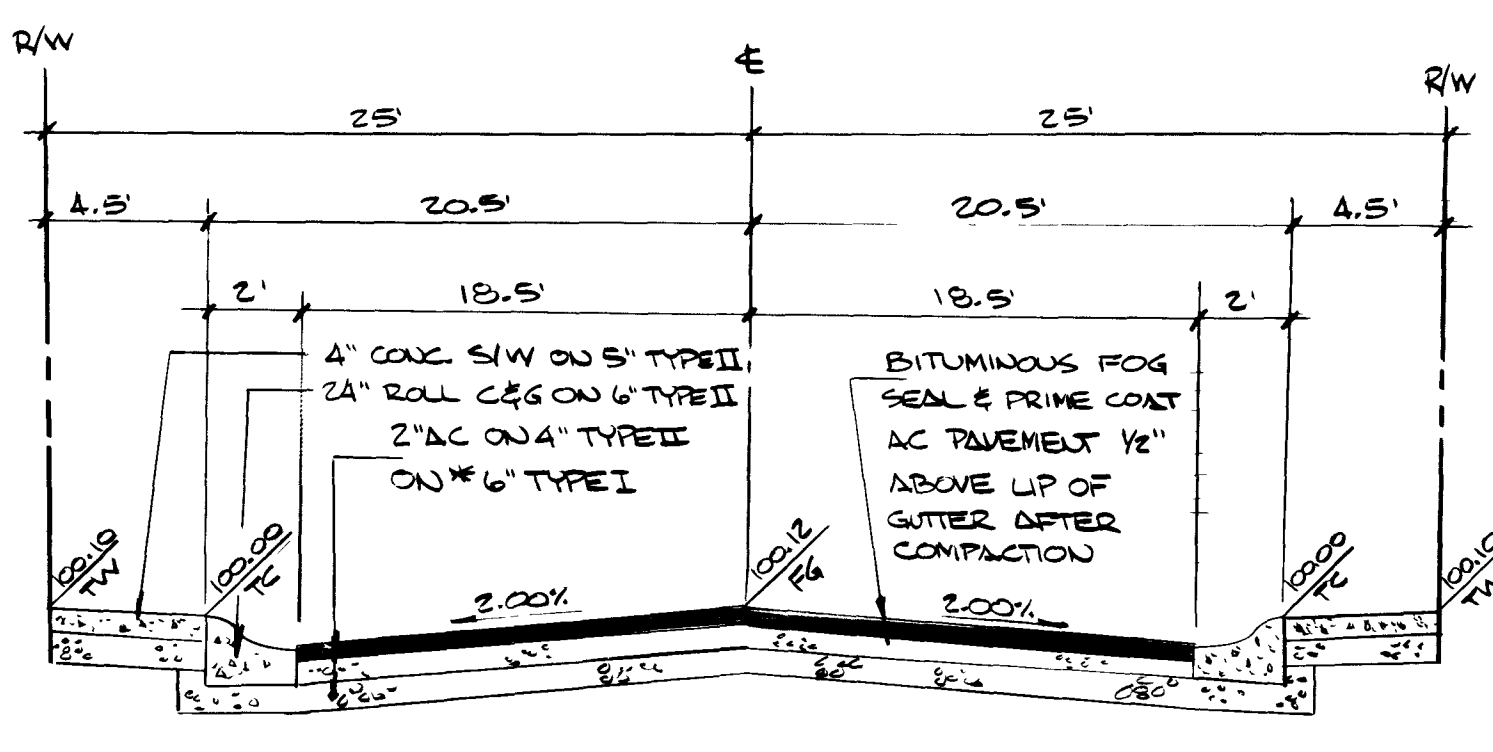
- NO HYDRANT SHALL BE LOCATED WITHIN 15' OF ANY DRIVEWAY, 6' OF POWER POLE, LIGHT STANDARD, OR ANY OTHER OBSTRUCTION.
- IF HYDRANT IS TO BE INSTALLED IN AN EXISTING SIDEWALK, A FULL PANEL OF THE SIDEWALK SHALL BE REMOVED AND REPLACED AFTER INSTALLATION OF THE HYDRANT.
- WHEN R/W AND FIELD CONDITIONS PERMIT THE FIRE HYDRANT SHALL BE PLACED BEHIND THE SIDEWALK.



FIRE HYDRANT DETAIL



24" ROLL CURB & GUTTER



50' TYPICAL STREET SECTION

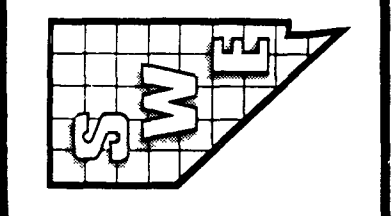
REVISION

DATE BY



7-20-88

**SOUTHWEST ENGINEERING**  
LAND PLANNING & IMPROVEMENT DEVELOPMENT  
1728 S. PALMVIEW BLVD., STE. 23  
LAS VEGAS, NEVADA 89102  
(702) 365-9700



DETAIL SHEET

**ALAQUA UNIT NO. 1**  
A SUBDIVISION WITHIN DESERT SHORES NO. 1

W.Q. No. 880219

DATE 7 - 88

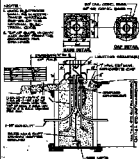
SCALE NONE

SHEET 2

OF 9 SHEETS

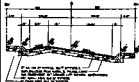
6030

14-9-88 1074-4018-1



STREET LOWBY DETAIL

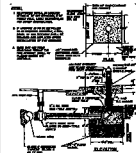
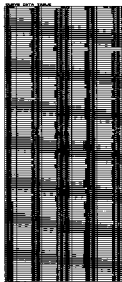
2. CROSS SECTION OF THE LOWBY IS SHOWN IN VIEW 'A' OF FIGURE 1. ALL DIMENSIONS ARE TO FACE UNLESS OTHERWISE NOTED. ALL MATERIALS TO BE USED SHALL BE OF THE BEST QUALITY AVAILABLE.



20' TYPICAL STREET SECTION  
& FOOT OVERFALL



6\"/>



FIRE HYDRANT DETAIL



64\"/>



20' TYPICAL STREET SECTION

DETAIL SHEET

ALAGUA UNIT NO. 1

DATE: 11-1-58

BY: [Signature]

CHECKED: [Signature]

APPROVED: [Signature]

SCALE: AS SHOWN