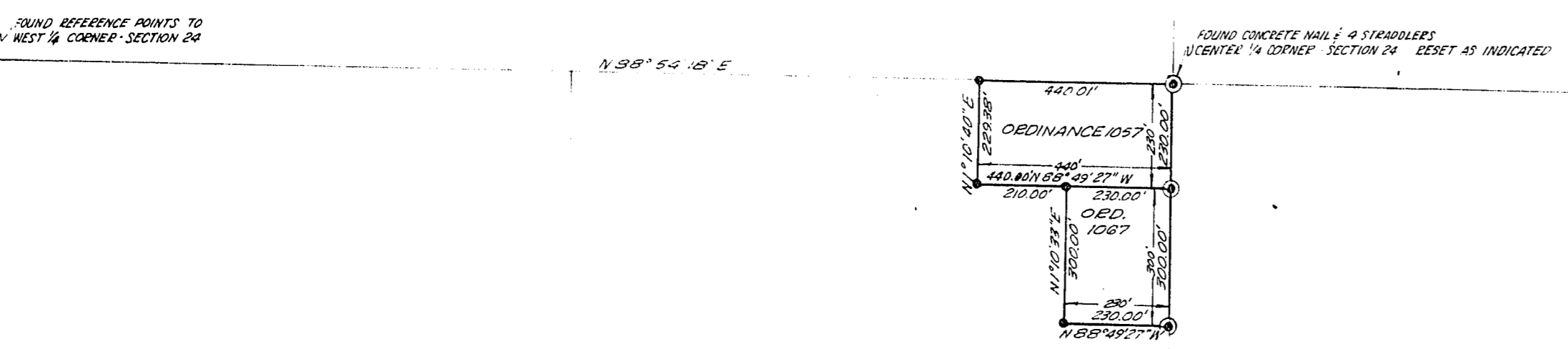
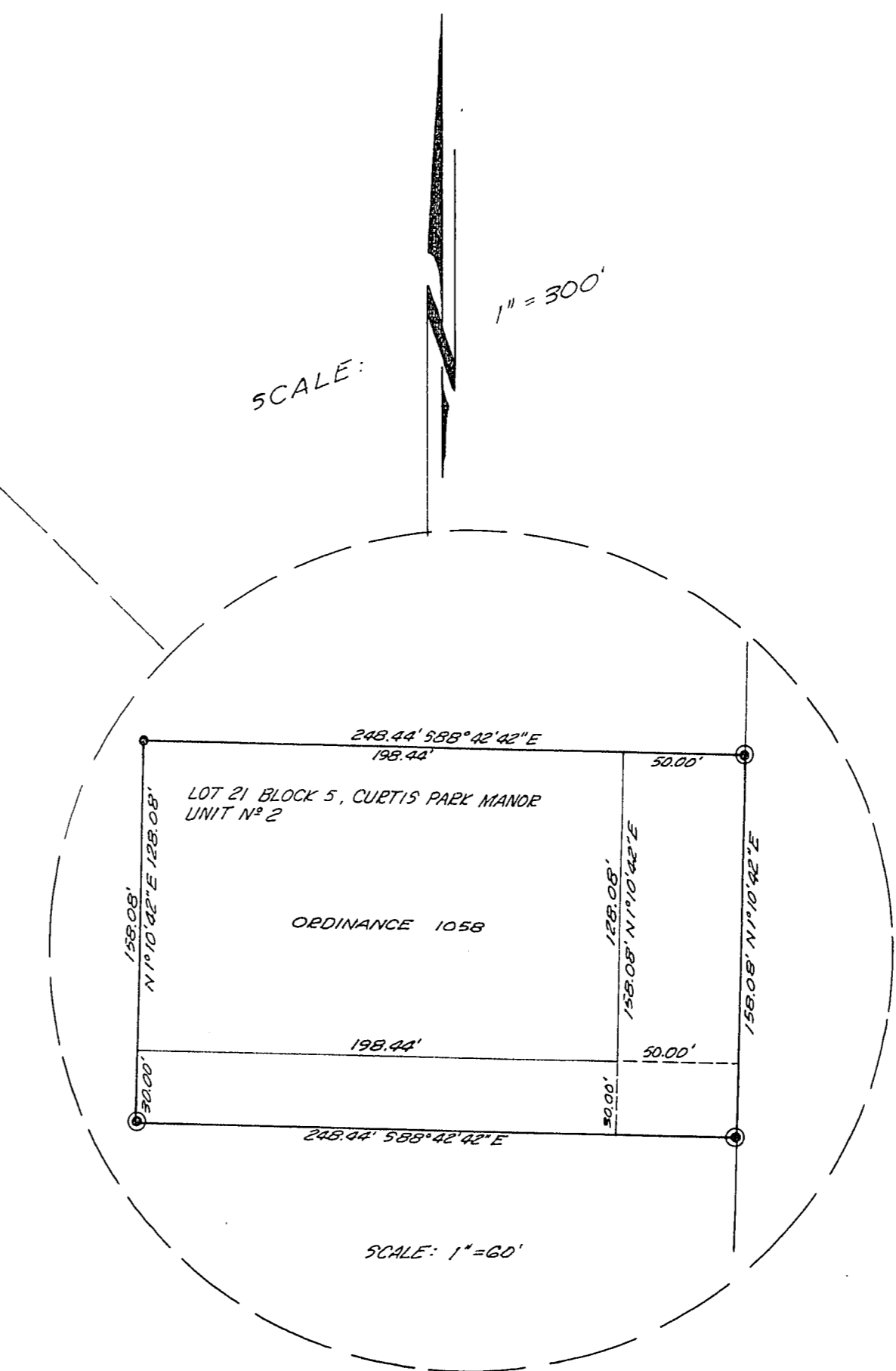
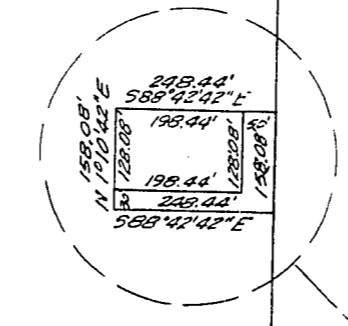
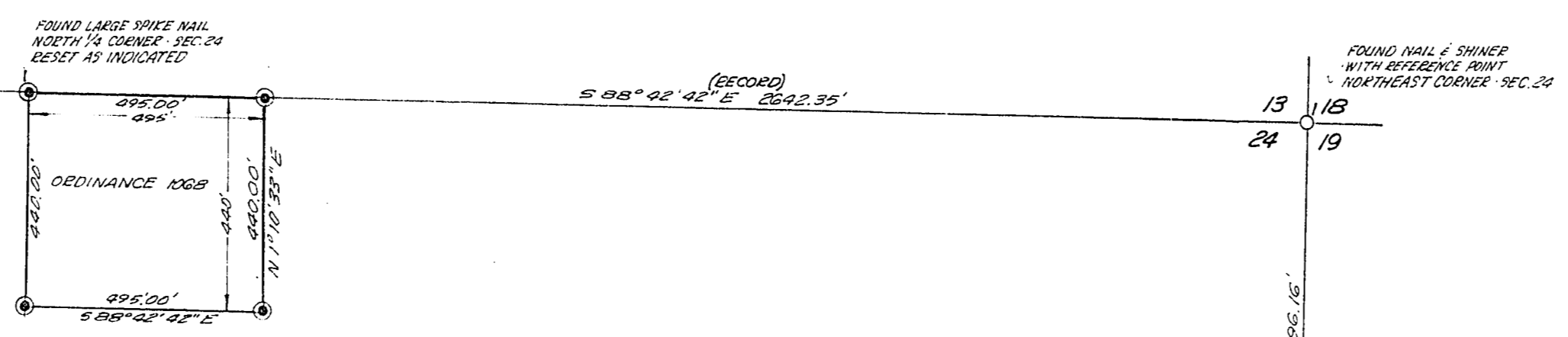


14 13
23 24



C E R T I F I C A T E

I, Jack K. Leavitt, Registered Professional Engineer and Land Surveyor, do hereby certify that this map truly and correctly represents the results of a survey made under my supervision and completed on the 15th day of February, 1964, of said for the City of Las Vegas, Nevada. This survey does not constitute a subdivision as defined by Nevada State Law.

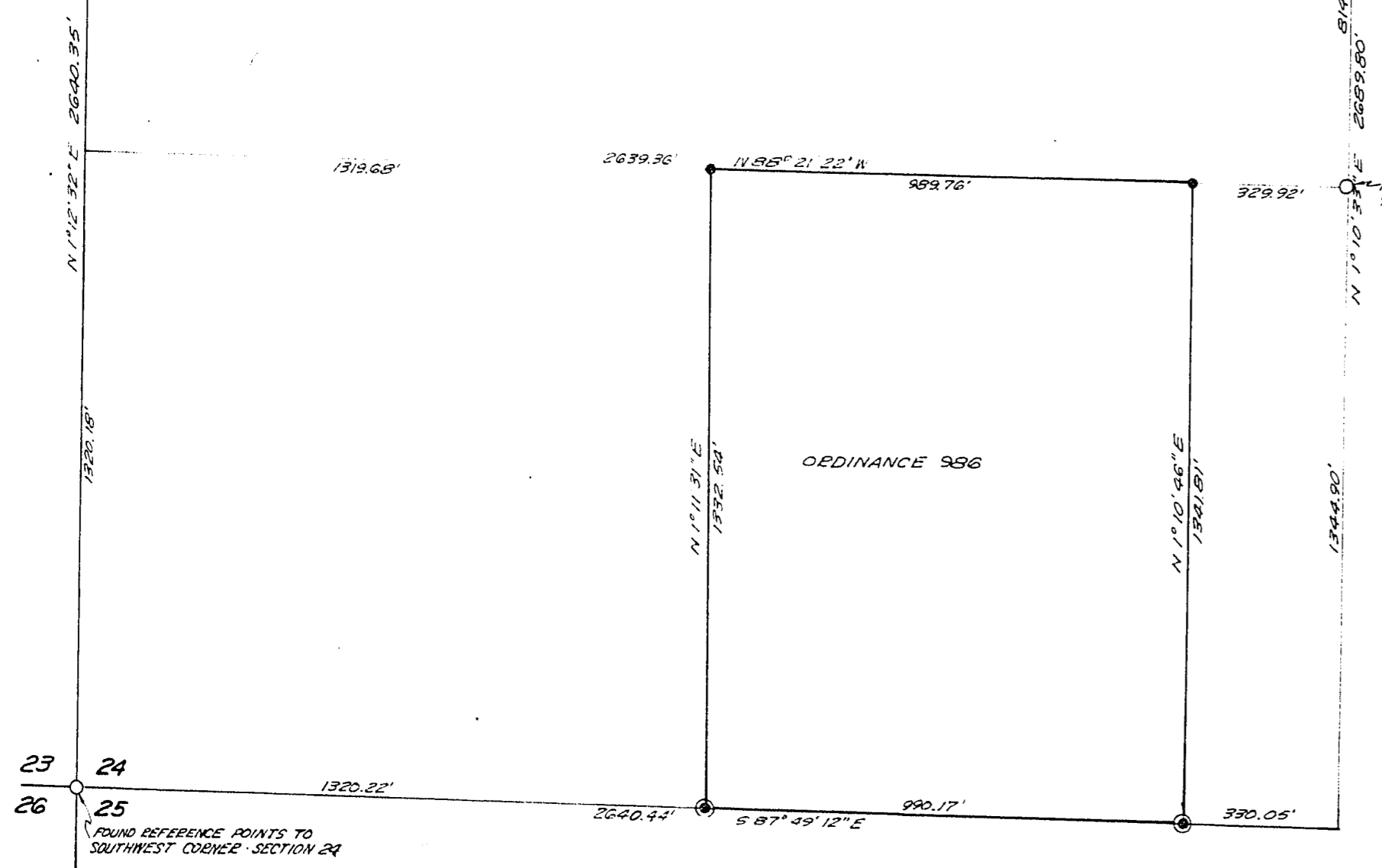
Jack K. Leavitt
JACK K. LEAVITT
 Registered Professional Engineer
 Land Surveyor E.L. 5807

A P P R O V A L S
 Approved this 9th day of Sept., 1964.

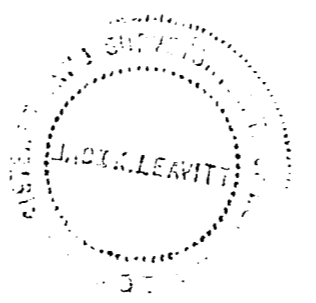
E. P. Sauer
E. P. SAUER
 City Engineer E.E. 396

L E G E N D

- Indicates point found - as shown
- Indicates point set - 1/2" reinforcing bar with aluminum cap topped E.L. 5807 - C.L.V. set in concrete
 Scale: 1" = 300'
- Indicates point set - 1/2" reinforcing bar with aluminum cap topped E.L. 5807 - C.L.V. set flush with surface of A.C. Paving.
 Reference Surveys: Registered Professional Engineer's File 9, Page 72, File 13, Page 8, File 5, Page 9, Book 5 of Plats Page 24, Clark County Records, Clark County, Nev.



No. 473992
 FILED AT THE REQUEST OF
CITY OF LAS VEGAS
 Date 12-2-64 at 10:52 AM
 FILE 15 PAGE 58
 of Surveys
 OFFICIAL RECORDS BOOK NO. 589
 CLARK COUNTY, NEVADA, RECORDS
PAUL E. HORN, RECORDER
 Fee \$ dh gt Deputy



CITY OF LAS VEGAS, NEVADA
 CITY ENGINEERING DEPT.

BOUNDARY SURVEY OF PORTIONS OF SECTION 24, T.20S, R.60E, M.D.B. & M., CLARK COUNTY, NEVADA ANNEXED TO THE CITY OF LAS VEGAS, NEVADA UNDER ORDINANCE N^{os} 1068, 1067, 1058, 1057, & 986

OWN BY <i>J.L.B.</i>	CHD BY	APPROVED	FILE REF
DATE	DATE	DATE	053-138