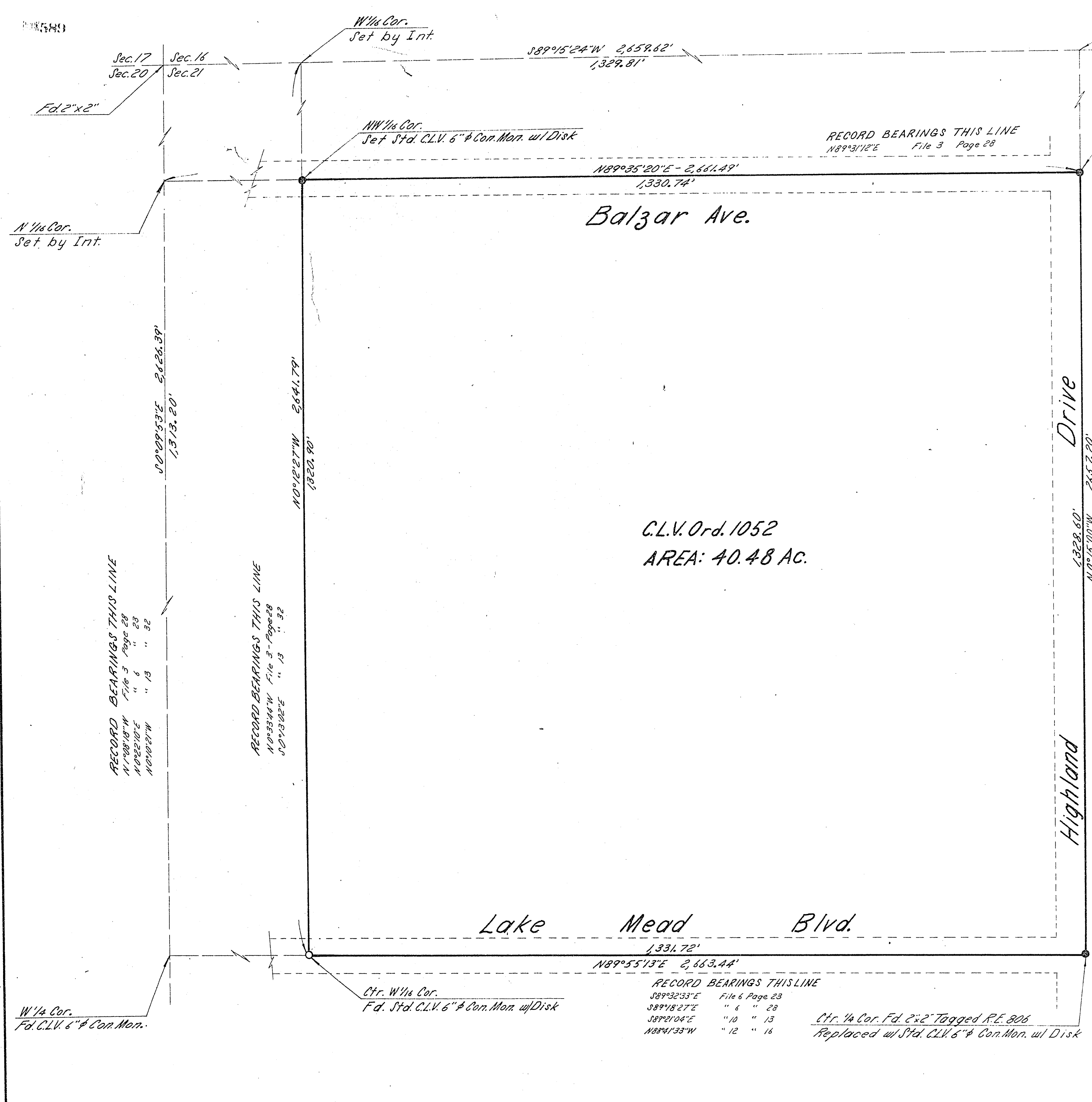


15589



Balzar Ave.

Highland Drive

Lake Mead Blvd.

C.L.V. Ord. 1052
AREA: 40.48 AC.

RECORD BEARINGS THIS LINE
N89°31'12"E File 3 Page 28

RECORD BEARINGS THIS LINE
N0°33'44"W File 3 Page 28
N0°22'07"E " 4 " 28
N0°10'27"W " 6 " 28
N0°12'27"W " 10 " 13

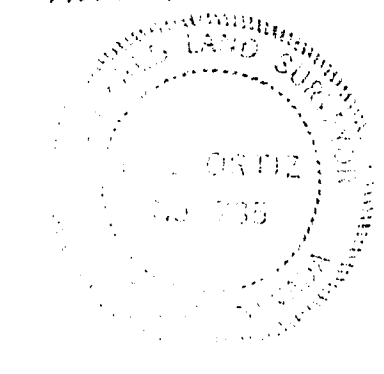
RECORD BEARINGS THIS LINE
N0°33'44"W File 3 Page 28
N0°22'07"E " 4 " 28
N0°10'27"W " 6 " 28
N0°12'27"W " 10 " 13

RECORD BEARINGS THIS LINE
S89°32'33"E File 6 Page 23
S89°18'27"E " 6 " 28
S89°10'04"E " 10 " 13
N89°11'33"W " 12 " 16

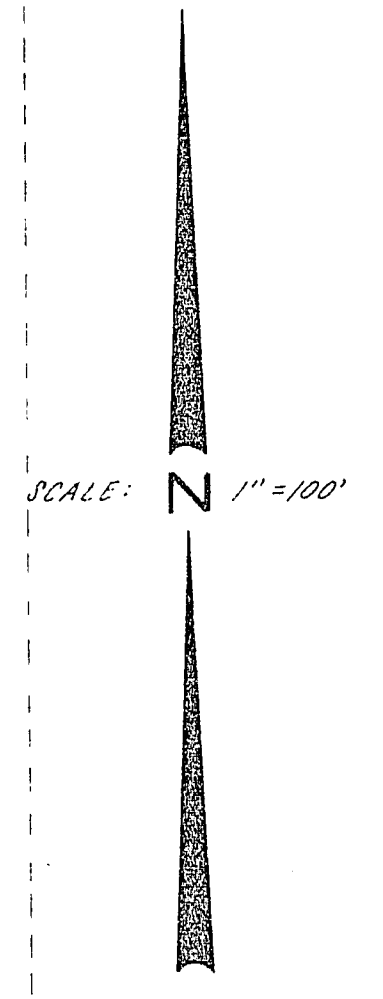
Ctr. 1/4 Cor. Fd. 2"x2" Tagged R.E. 806
Replaced w/ Std. CLV 6" & Con. Mon. w/ Disk

CERTIFICATE

I, B.L. Ortiz, a duly Registered Land Surveyor of the State of Nevada, do hereby certify that this map, consisting of one sheet, correctly represents a true and complete survey made under my supervision at the instance of The City of Las Vegas, Nevada, pursuant to Annexation Ordinance No. 1052, that the monuments shown hereon are in place, that their positions and character are correctly shown, and that said monuments are sufficient to enable the survey to be retraced; that the survey was completed on March 10, 1964. This is not intended to be a subdivision.



B. L. Ortiz
B.L. Ortiz Nevada R.L.S. No. 735



BASIS OF BEARINGS

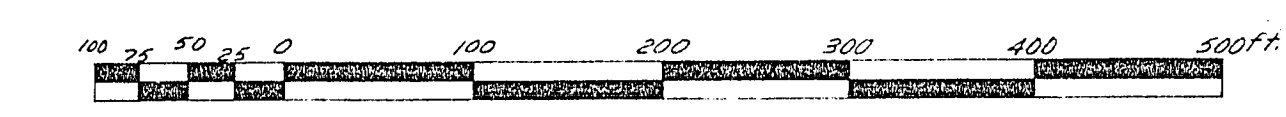
The Nevada Coordinate System - East Zone.

APPROVAL

APPROVED this 12th day of October, 1964.

Paul E. Horn
CITY ENGINEER
Nevada R.E. No. 396

GRAPHIC SCALE



PLAN OF
SE 1/4, NW 1/4, Sec. 21, T20S, R61E,
M.D.B.M.
CITY OF LAS VEGAS
NEVADA

BOUNDARY SURVEY OF
SE 1/4, NW 1/4, Sec. 21, T20S, R61E,
M.D.B.M.
Annexed to the City of Las Vegas,
Nevada, under Ordinance No. 1052

No. 473986
FILED AT THE REQUEST OF
City of Las Vegas
Date 12-2-64 at 10:59 AM
FILE 15 PAGE 52
of Survey
OFFICIAL RECORDS BOOK NO. 589
CLARK COUNTY, NEVADA RECORDS
PAUL E. HORN, RECORDER
Rec'd by _____ Deputy

FILE 15 PAGE 52
.053-151