

RECORD BEARINGS THIS LINE
 N89°58'30"E File 6 Page 48
 N89°49'21"E " 13 " 15

S 1/4 Cor.
 Set by Int.

SW 1/4 Cor.
 Set by Int.

Holly Drive

S89°37'14"W
 1,330.14'

Set Std. 6" P.C.L.V. Conc. Mon. w/disk
 (Typical)

S89°41'39"W
 239.00'
 C.L.V. Ord. 1077
 Area: 0.99Ac.

Ferrell Street
 RECORD BEARINGS THIS LINE
 N0°17'36"E File 6 Page 48

RECORD BEARINGS THIS LINE
 S0°18'39"E File 6 Page 28
 " " " " " 48
 N0°22'30"E " " " " " 48

Allen Lane

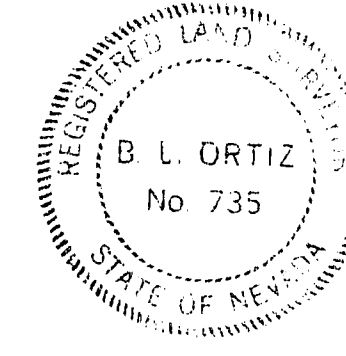
667.79'
 1,303.57'
 S0°01'11"W
 651.78'

S89°41'39"W
 1,331.06'

Scale: N 1" = 100'

CERTIFICATE

I, B. L. Ortiz, a duly Registered Land Surveyor of the State of Nevada, do hereby certify that this map, consisting of one sheet, correctly represents a true and complete survey made under my supervision at the instance of The City of Las Vegas, Nevada, pursuant to Annexation Ordinance No. 1077; that the monuments shown hereon are in place, that their positions and character are correctly shown, and that said monuments are sufficient to enable the survey to be retraced; that the survey was completed on March 10, 1964. This is not intended to be a subdivision.



B. L. Ortiz
 B. L. Ortiz Nevada R.L.S. No. 735

BASIS OF BEARINGS

The Nevada Coordinate System-East Zone.

APPROVAL

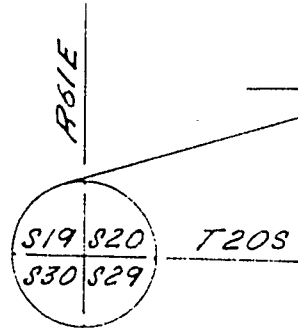
APPROVED this 12th day of October, 1964.

Ed. Lewis
 CITY ENGINEER
 Nevada R.E. No. 396

GRAPHIC SCALE



Set Spk & Tin
 per Bk. 4 Pg. 98



Vegas Drive

RECORD BEARINGS THIS LINE
 N89°52'24"W File 6 Page 48
 N89°54'32"W " 9 " 30

1,331.99'
 N89°46'39"E

W 1/4 Cor.
 Fd. NET

BOUNDARY SURVEY OF
 S 182' of the E 239' of N 1/4, SW 1/4,
 SW 1/4, Sec. 20, T20S, R61E, M.D.B.M.
 Annexed to the City of Las Vegas,
 Nevada, under Ordinance No. 1077.

NO. 473990
 FILED AT THE REQUEST OF
 City of Las Vegas
 Date 12-2-64 at 10:53 AM
 PLS. 15 PAGE 56
 OF 10 PAGES
 (1) JAL RECORD BOOK NO. 589
 (2) JAL COUNTY, NEVADA RECORD
 PAUL E. HORN, RECORDS
 PLS. dh gt