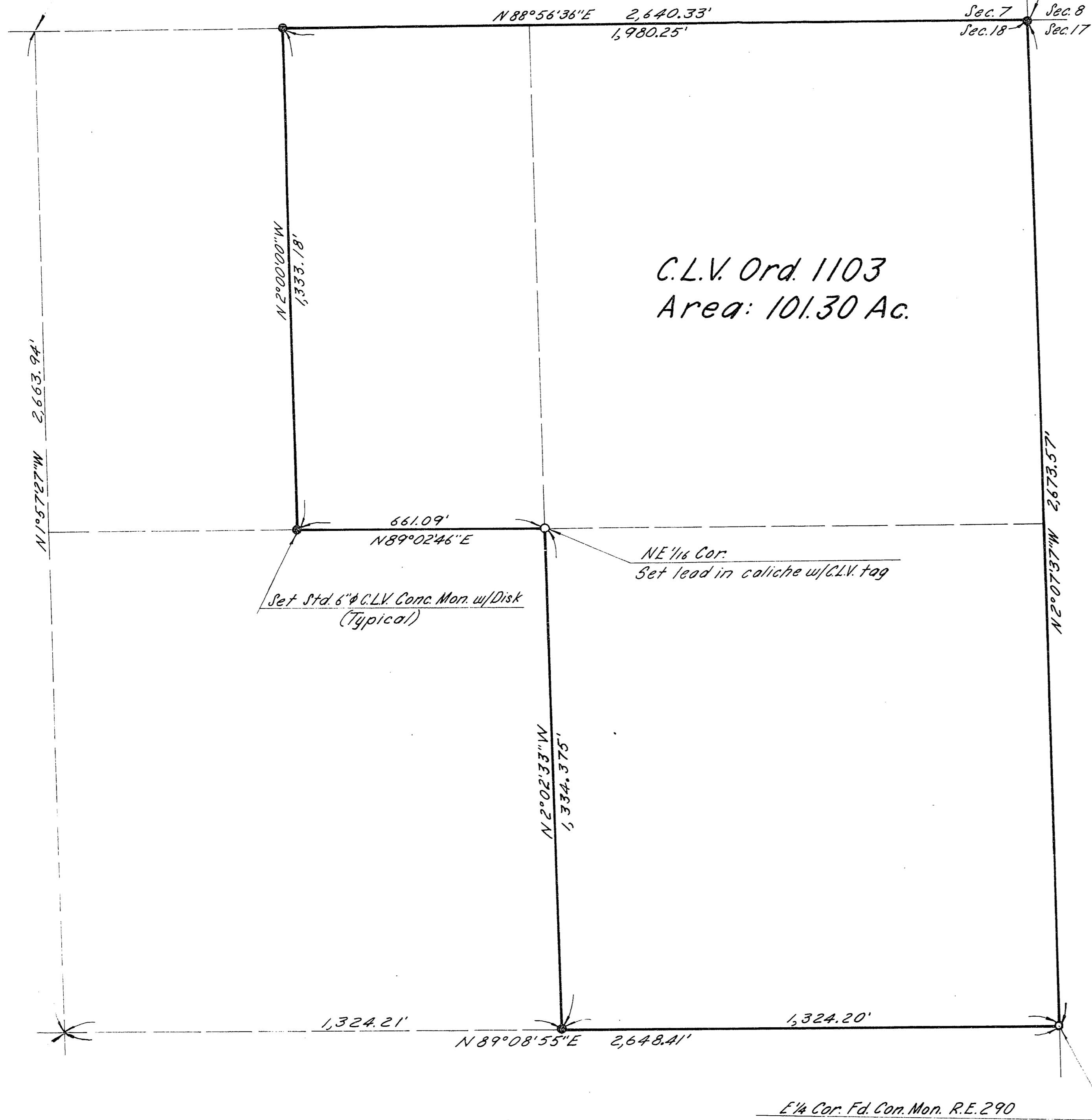


RECORD BEARINGS THIS LINE
 N 1° 41' 14" W File 6 Page 98
 N 1° 42' 04" W " 11 " 16
 S 1° 58' 05" E " 12 " 87

N 1/4 Cor.
 Fd. Con. Mon. R.E. 287

RECORD BEARINGS THIS LINE
 N 89° 12' 20" E File 11 Page 16
 S 88° 57' 20" W " 12 " 87

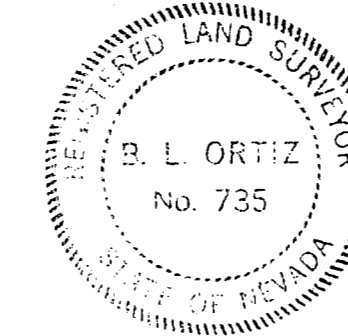
Fd. Con. Mon. R.E. 290
 Replaced w/ Std. 6" C.L.V. Conc. Mon. w/ Disk



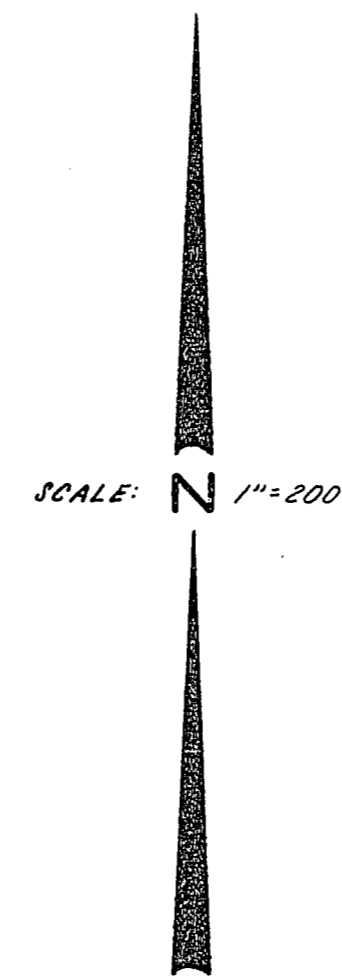
C.L.V. Ord. 1103
 Area: 101.30 Ac.

CERTIFICATE

I, B.L. Ortiz, a duly Registered Land Surveyor of the State of Nevada, do hereby certify that this map, consisting of one sheet, correctly represents a true and complete survey made under my supervision at the instance of The City of Las Vegas, Nevada, pursuant to Annexation Ordinance No. 1103; that the monuments shown hereon are in place, that their positions and character are correctly shown, and that said monuments are sufficient to enable the survey to be retraced; that the survey was completed on February 14, 1964. This is not intended to be a subdivision.



B. L. Ortiz
 B.L. Ortiz Nevada R.L.S. No. 735



BASIS OF BEARINGS

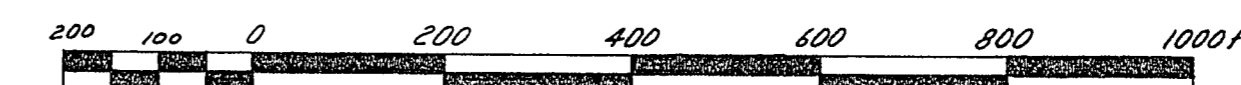
The Nevada Coordinate System - East Zone.

APPROVAL

APPROVED this 12th day of October, 1964.

[Signature]
 CITY ENGINEER
 Nevada R.E. No. 396

GRAPHIC SCALE



Ctr. 1/4 Cor.
 Set NE 7

PLAN OF
 NE 1/4, Sec. 18, T20S, R61E,
 M.D.B.M.
 CITY OF LAS VEGAS
 NEVADA

BOUNDARY SURVEY OF
 E 1/2, NW 1/4, NE 1/4, & E 1/2, NE 1/4,
 Sec. 18, T20S, R61E, M.D.B.M.
 Annexed to the City of Las Vegas,
 Nevada, under Ordinance No. 1103.

NO. 473980
 FILED AT THE REQUEST OF
 City of Las Vegas
 Date 12-2-64 at 10:19 AM
 1st 15... PAGE 46
 OF SURVEY
 COUNTY RECORDS BOOK NO. 589
 CLAY COUNTY, NEVADA, RECORD
 PAUL E. HOEN, RECORDER
 Filed dh ms Deputy