

CERTIFICATE

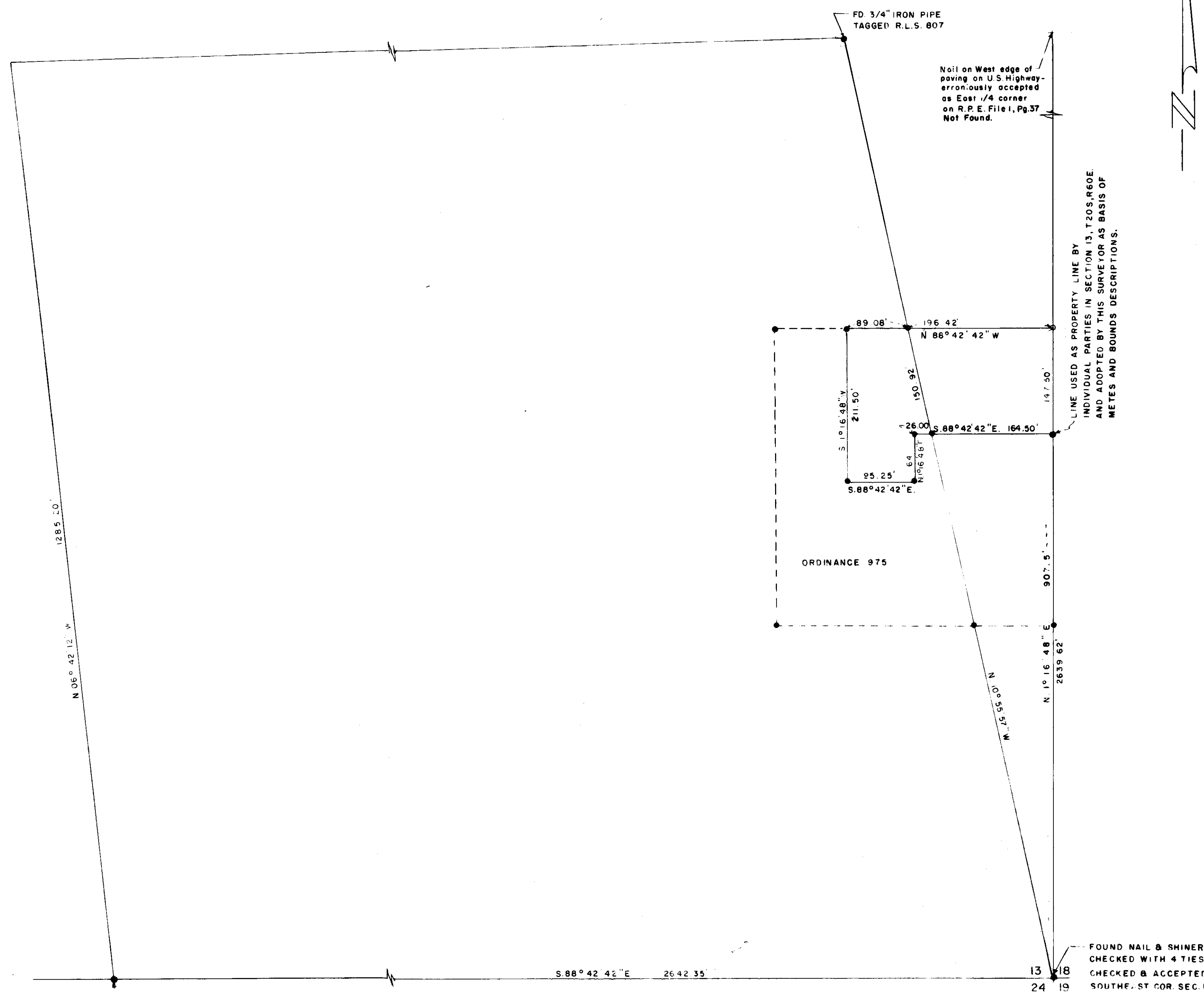
I, NOLAN D. MITCHELL, A DULY REGISTERED LAND SURVEYOR, do hereby certify that this map truly and correctly represents the results of a survey made under my supervision and completed on the 4th day of July, 1966 of and for the City of Las Vegas, Nevada. This survey is not a subdivision as defined in Planning & Zoning Law as shown in 1943-1949 Supplement, Nevada Compiled Laws.

NOTE:
The East line of Section 13 has been the subject of dispute. The section line as shown hereon is based upon evidence from many sources. The possession lines are in conflict with the actual section line. It is the opinion of this surveyor that the intent of past conveyances and consequently the intent of annexation is based upon possession as opposed to the true section line. This surveyor has no authority to render a judicial decision on the facts concerning the difference between the possessed line and the section line and cannot therefore assume liability for the correctness of the interpretation made hereon. Until such time as a judicial decision is rendered in a court of law, the lines hereon are subject to relocation.

N. D. Mitchell
NOLAN D. MITCHELL, REGISTERED LAND SURVEYOR NEVADA NO. 2094

APPROVED this 1st day of August, 1966

R. P. Sauer
R. P. SAUER, CITY ENGINEER
NEVADA R. E. NO. 396



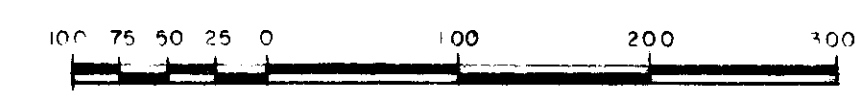
FD SPIKE
CHECKED WITH TIES
& ACCEPTED
S 1/4 SEC 13

REFERENCE SURVEYS
REGISTERED PROFESSIONAL ENGINEERS FILE
CLARK COUNTY, NEVADA, RECORDS
FILE 1, PAGE 3 - FILE 1, PAGE 61
FILE 1, PAGE 37 - FILE 1, PAGE 73
FILE 2, PAGE 23 - FILE 5, PAGE 02
FILE 12, PAGE 87 - FILE 15, PAGE 61

● MONUMENT FOUND
○ MONUMENT SET

FOUND NAIL & SHINER
CHECKED WITH 4 TIES
CHECKED & ACCEPTED
SOUTH. ST COR SEC. 13

SCALE: 1" = 100'



NO. **591128**
FILED AT THE REQUEST
OF CITY OF LAS VEGAS
DATE 8-3-66 AT 2:06 P.M.
FILE 16 PAGE 98
OF SURVEYS
OFFICIAL RECORDS, BOOK NO. 735
CLARK COUNTY, NEVADA RECORDS
PAUL E. HORN, RECORDER
FEE DH DEPUTY E.M.

CITY OF LAS VEGAS, NEVADA
ENGINEERING DEPT.

BOUNDARY SURVEY OF PORTION OF SEC. 13,
T 20S., R 60E., M DB & M. CLARK COUNTY,
NEVADA, ANNEXED TO THE CITY OF LAS
VEGAS, NEVADA UNDER ORDINANCE NO. 1249

DRAWN BY: L.H.	CKD. BY: P.L.K.	APPROVED BY:	FIELD REF.
DATE 7-12-66	DATE 14-6-	DATE	65-7X