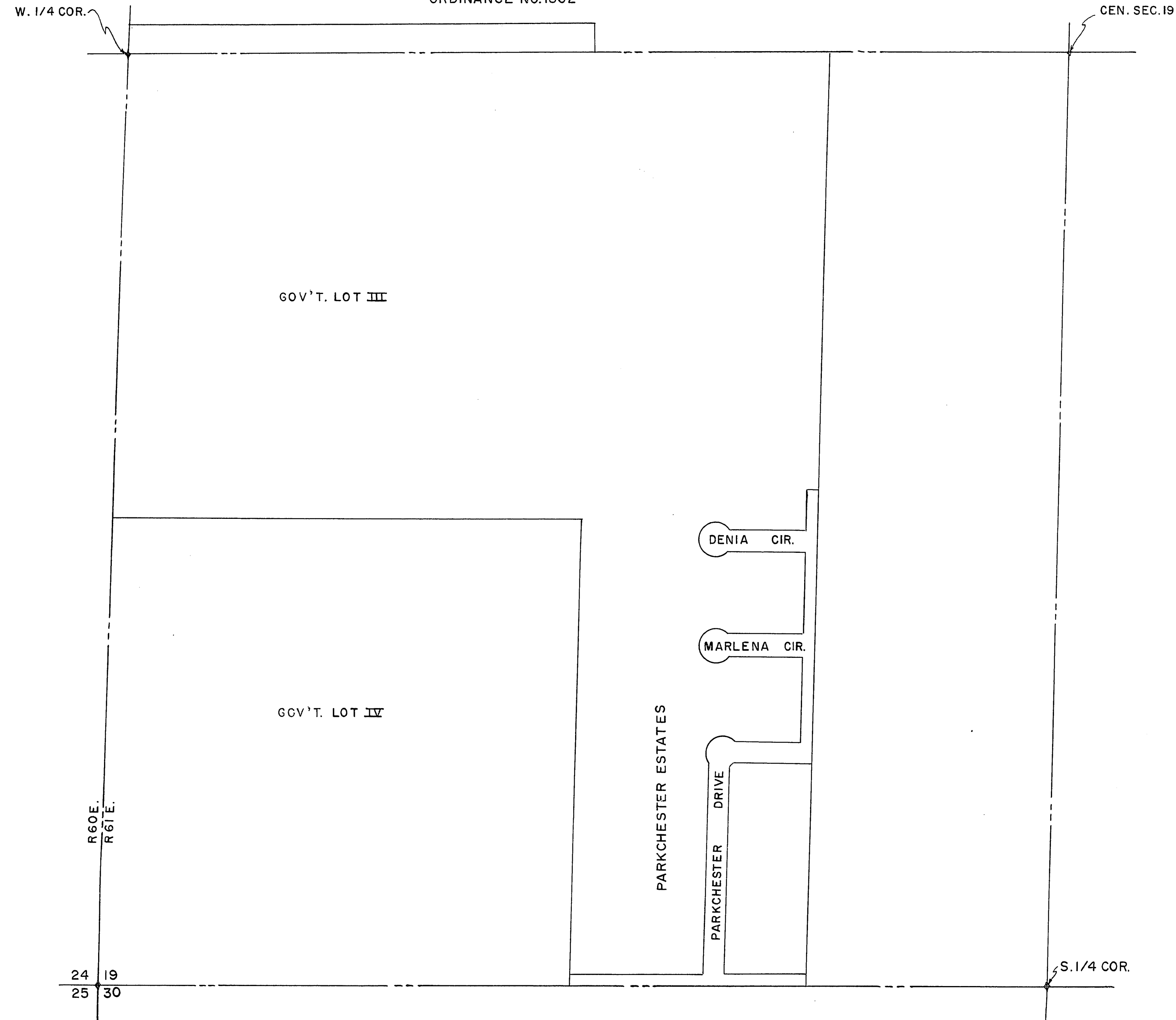


EXHIBIT "A"
PORTION S.W.1/4, SEC.19,
T.20S., R.61E., M.D.B.&M.
ORDINANCE NO.1302



RECORDER'S NOTE:
THIS DOES NOT CONSTITUTE
A SURVEY, IT IS AN EXHIBIT ONLY
AS RECORDED 9-29-67 UNDER
ORDINANCE NO. 1295 (663371).

Recorded 12-4-67

CITY OF LAS VEGAS, NEVADA
ENGINEERING DEPT.

BOUNDARY MAP OF A PORTION OF SECTION 19,
T.20S., R. 61E., M.D.B.&M. ANNEXED TO THE
CITY OF LAS VEGAS, NEVADA UNDER EMERGENCY
ORDINANCE NO. 1295, NOW AMENDED TO READ
ORDINANCE NO. 1302.

DRAWN BY: L.H.	CKD. BY:	APPROVED: <i>[Signature]</i>
DATE	DATE	DATE 11-24-67

3-41 053-164 A