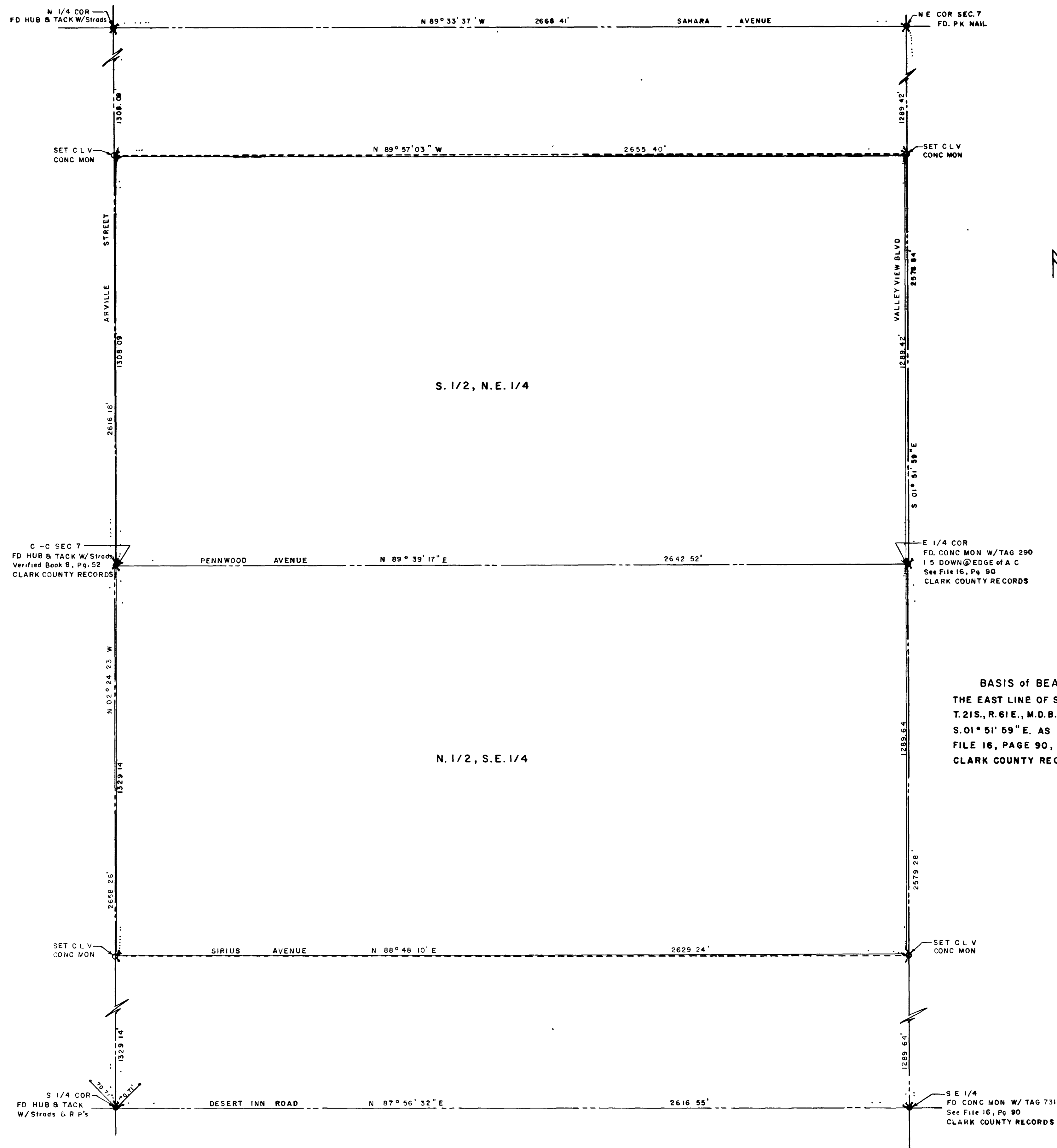


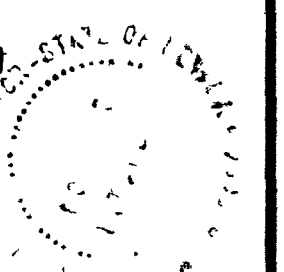
Book 124

98954



ENGINEER'S CERTIFICATE

I, NOLAN D. MITCHELL, A DULY REGISTERED LAND SURVEYOR, do hereby certify that this map truly and correctly represents the results of a survey made under my supervision and completed on the 20 day of April, 1971 of and for the City of Las Vegas, Nevada. This survey is not a subdivision as defined in Planning & Zoning Law as shown in 1943-1949 Supplement, Nevada Compiled Laws.



Nolan D. Mitchell
 NOLAN D. MITCHELL, REGISTERED LAND SURVEYOR
 NEVADA 2094

APPROVED this 26TH day of APRIL, 1971

R.P. Sauer
 R.P. SAUER, CITY ENGINEER
 NEVADA R.E. 396

BASIS OF BEARINGS
 THE EAST LINE OF SECTION 7,
 T.21S., R.61E., M.D.B.&M. BEARING
 S.01° 51' 59" E. AS SHOWN ON
 FILE 16, PAGE 90, OFFICE OF
 CLARK COUNTY RECORDER.

SCALE: 1" = 200'



- MONUMENTS FD.
- MONUMENTS SET

NO. 98954
 FILED AT THE REQUEST OF
 City of Las Vegas
 DATE 5-11-71 12:02 PM
 FILE 21 PAGE 37
 of Surveys
 OFFICIAL RECORDS BOOK NO. 124
 CLARK COUNTY, NEVADA, RECORDS
 PAUL E. HORN, RECORDER
 Fee \$... D.H. ... G.T. Deputy
 E.S.

CITY OF LAS VEGAS, NEVADA
 ENGINEERING DEPT.

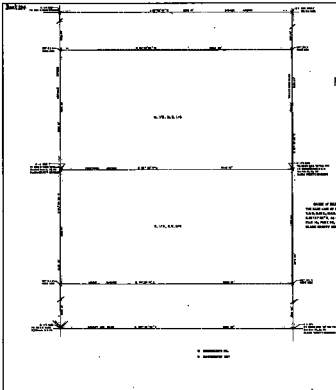
BOUNDARY SURVEY OF THE S. 1/2,
 N.E. 1/4 AND THE N. 1/2, S.E. 1/4, SECTION 7,
 T. 21S., R. 61E., M.D.B. & M. ANNEXED TO THE
 CITY OF LAS VEGAS, NEVADA UNDER
 ORDINANCE 1296

DRAWN BY LH	CKD BY	APPROVED	FIELD REF
DATE	DATE	DATE	

FILE 21 PAGE 37

9589

053-170



PROPOSED CONTINGENCY
 I, **WILLIAM H. HIGGINS**, a duly licensed and sworn surveyor, do hereby certify that this map truly and accurately represents the above in a correct and lawful manner according to the laws of the State of Nevada, and that I am duly qualified to perform the same in accordance with the laws of the State of Nevada, and that I am duly qualified to perform the same in accordance with the laws of the State of Nevada, and that I am duly qualified to perform the same in accordance with the laws of the State of Nevada.

WILLIAM H. HIGGINS
 SURVEYOR

APPROVED BY **WILLIAM H. HIGGINS**, SURVEYOR

William H. Higgins
 W. H. HIGGINS, SURVEYOR
 1000 S. 10th St.

NAME OF BOUNDARY
 THE BOUNDARY OF SECTION 14,
 T. 36 N., R. 30 E., S. 4, S. 14,
 S. 1/2, S. 3, S. 14,
 IS SHOWN BY THIS PLAT, IN ACCORDANCE WITH THE LAWS OF THE STATE OF NEVADA.

SCALE: 1"=100'

NEARBY TO THE

W. HIGGINS, SURVEYOR

NO. 22574
 FILED IN THE OFFICE OF THE CLERK OF THE DISTRICT COURT OF THE STATE OF NEVADA, COUNTY OF CLATSOP, ON THIS 21st DAY OF MARCH, 1964.
 W. HIGGINS, SURVEYOR

CITY OF LAS VEGAS, NEVADA
 CLERK OF DISTRICT COURT
 COUNTY OF CLATSOP, NEVADA
 ADVISORY SERVICE OF THE CLERK, S.C. 1/2 AND THE S.C. 1/2, S. 14, S. 3, S. 14, T. 36 N., R. 30 E., S. 4, S. 14, TO THE CITY OF LAS VEGAS, NEVADA, IN ACCORDANCE WITH THE LAWS OF THE STATE OF NEVADA.

FILE #1 PH 66 37