

SURVEYOR'S CERTIFICATE

I, NOLAN D. MITCHELL, A DULY REGISTERED LAND SURVEYOR, DO HEREBY CERTIFY THAT THIS MAP TRULY AND CORRECTLY REPRESENTS THE RESULTS OF A SURVEY MADE UNDER MY SUPERVISION AND COMPLETED ON THE 2nd DAY OF June, 1976, OF AND FOR THE CITY OF LAS VEGAS, NEVADA. THIS SURVEY IS NOT A SUBDIVISION AS DEFINED IN PLANNING AND ZONING LAW AS SHOWN IN 1943-1949 SUPPLEMENT, NEVADA COMPILED LAWS.

Nolan D. Mitchell
NOLAN D. MITCHELL, REGISTERED LAND SURVEYOR, No. 2094

APPROVED THIS 2nd DAY OF June, 1976.

William J. Ferris
WILLIAM J. FERRIS, CITY ENGINEER, R.E. 3336

BASIS OF BEARINGS

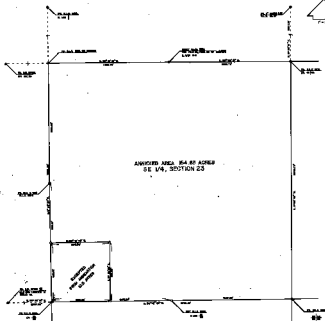
BASIS OF BEARINGS IS NEVADA STATE COORDINATE SYSTEM (EAST ZONE) BASED ON CLARK COUNTY SURVEYOR DATUM, GRID, BEARINGS, GRID FACTOR = 0.999801669 — DISTANCES ARE GROUND MEASUREMENTS.

LEGEND

- ◆ FOUND C.L.V. MONUMENT
- ◇ FOUND 2x2 & TAG R.L.S. 1824
- RESET C.L.V. MON. PER FILE 13, PAGE 53 OF SURVEYS
- SET C.L.V. MONUMENT
- ▲ FOUND R.R. SPIKE

BOUNDARY SURVEY OF THE
SOUTHEAST QUARTER OF SECTION 23,
TOWNSHIP 20 SOUTH, RANGE 60 EAST, M.D.M.
ANNEXED TO THE CITY OF LAS VEGAS, NEVADA
UNDER ORDINANCE No. 1819

NO. 586854
RECORDED AT THE REQUEST OF
CITY OF LAS VEGAS
DATE 6-3-76 AT 4:31 P.M.
FILE 29 PAGE 80
OF SURVEYS
OFFICIAL RECORDS BOOK NO. 627
CLARK COUNTY NEVADA, RECORDS
JOAN SWIFT
RECORDER
FEE DN
DEPUTY B.V.



SURVEYOR'S CERTIFICATE

I, the undersigned, being a duly qualified and licensed Surveyor of the State of Missouri, do hereby certify that the foregoing is a true and correct copy of the original plat on file in my office, and that the same is a true and correct copy of the original plat on file in my office.

WITNESSED my hand and seal of office at St. Louis, Missouri, this 1st day of June, 1908.



APPROVED AND ORDERED that the same be recorded as the original plat on file in my office.

WITNESSED my hand and seal of office at St. Louis, Missouri, this 1st day of June, 1908.

NAME OF DEPARTMENT

THE CITY OF ST. LOUIS, MISSOURI, DEPARTMENT OF PUBLIC WORKS, ENGINEER'S OFFICE.

FORM

1. THIS IS A SURVEY
2. THIS IS A SURVEY
3. THIS IS A SURVEY
4. THIS IS A SURVEY
5. THIS IS A SURVEY

BORDERLY SURVEY OF THE
SOUTHWEST QUARTER OF SECTION 23,
TOWNSHIP 30 SOUTH, RANGE 09 EAST, S.W. 1/4,
ACRES TO THE CITY OF ST. LOUIS, MISSOURI,
UNDER ORDINANCE 64, 1908.

RECORDED IN THE OFFICE OF THE
CLERK OF THE CIRCUIT COURT OF
ST. LOUIS, MISSOURI, THIS 1st DAY OF
JUNE, 1908, AT 10 O'CLOCK A.M.
BY MEANS OF THE ORIGINAL PLAT
ON FILE IN MY OFFICE, AND
A TRUE COPY OF THE ORIGINAL PLAT
ON FILE IN MY OFFICE.