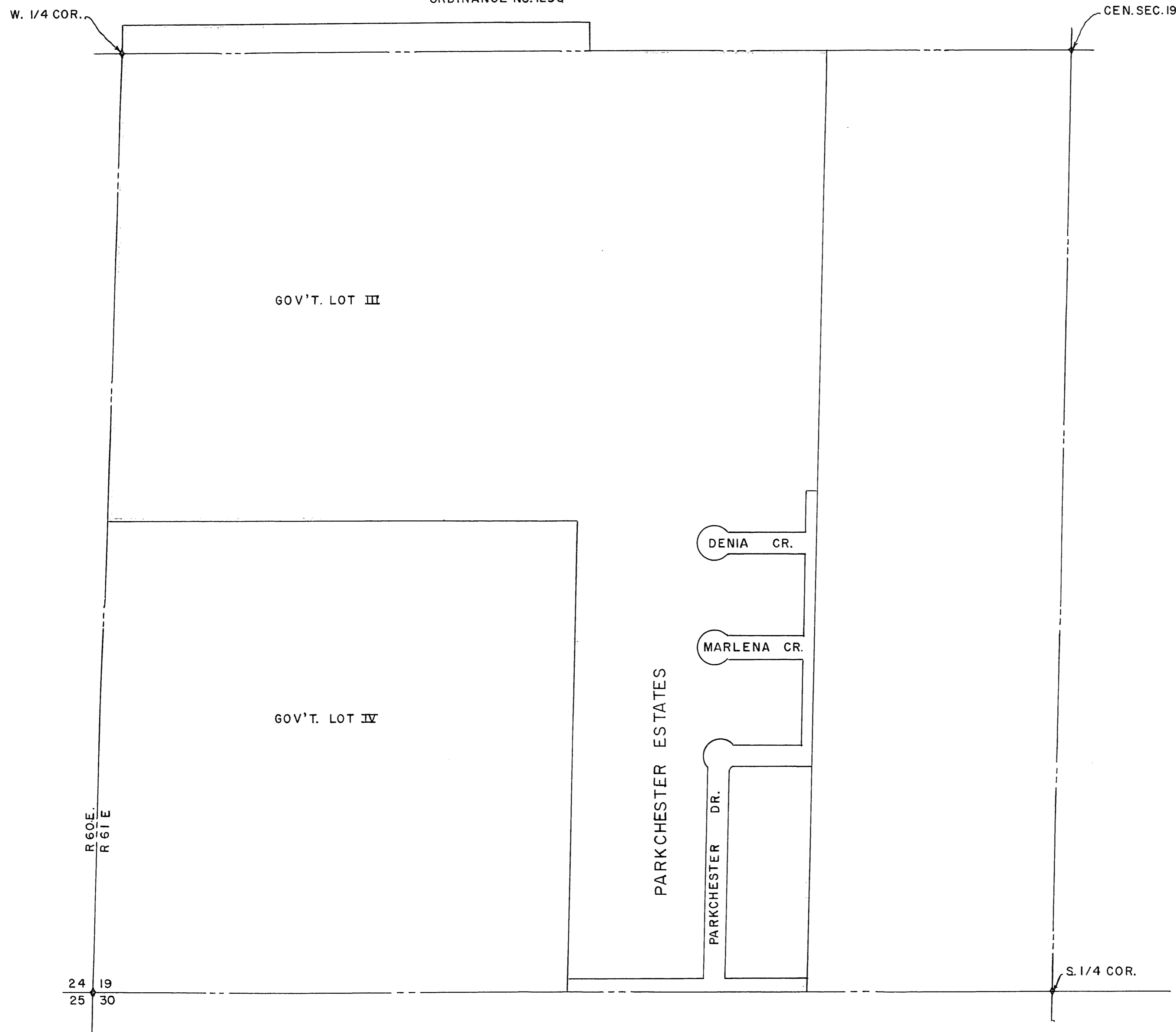


EXHIBIT "A"  
PORTION S.W. 1/4, T.20S., R.61E  
M.D.B.&M  
ORDINANCE NO. 1295



CITY OF LAS VEGAS NEVADA			
DEPARTMENT OF PUBLIC WORKS			
SERVICES DIVISION			
BOUNDARY MAP OF A PORTION OF SEC. 19, T.20S. R. 61E, M. D. B. & M. ANNEXED TO CITY OF LAS VEGAS, NEV. UNDER ORDINANCE NO. 1295			
W.O. NO.	E. BK. NO.	DATE	DRAWING NO.
SC. (H)	SC. (V)		
DES.		9-29-67	FILE NO.
DR.			053-164
APPROVED BY DIRECTOR OF PUBLIC WORKS		9/29/67	SHEET OF
<i>U.B. Williams</i>			

Amended By 053-179