

RECORD BEARINGS THIS LINE
 N89°58'30"E File 6 Page 48
 N89°49'21"E " 13 " 15

S 1/4 Cor.
 Set by Int.

SW 1/4 Cor.
 Set by Int.

Holly Drive

S89°37'14"W
 1,330.14'

1,303.57'

RECORD BEARINGS THIS LINE
 S0°18'39"E File 6 Page 28
 N0°22'30"E " 6 " 48

Allen Lane

S0°0'11"W

S89°41'39"W 1,331.06'

Set Std. 6" CLV Conc. Mon. w/disk
 (Typical)

225.00'

CLV Ord.
 1054
 Area:
 364.85 Ac.

1,307.20'

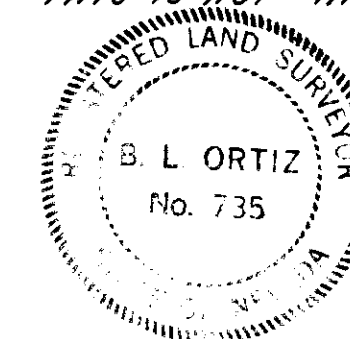
Ferrell Street

RECORD BEARINGS THIS LINE
 N0°17'36"E File 6 Page 48

SCALE N 1" = 100'

CERTIFICATE

I, B.L. Ortiz, a duly Registered Land Surveyor of the State of Nevada, do hereby certify that this map, consisting of one sheet, correctly represents a true and complete survey made under my supervision at the instance of The City of Las Vegas, Nevada, pursuant to Annexation Ordinance No. 1054; that the monuments shown hereon are in place; that their positions and character are correctly shown, and that said monuments are sufficient to enable the survey to be retraced; that the survey was completed on March 10, 1964. This is not intended to be a subdivision.



B. L. Ortiz
 B.L. Ortiz Nevada R.L.S. No. 735

LEGAL DESCRIPTION ORDINANCE 1054

All of Lots 9 and 10, and the E 1/2 of Lots 11 and 12 of Sebec Acres, a subdivision in the S 1/2 of the SW 1/4 of the SW 1/4 of Sec. 20, T20S, R61E, M.D.B.M., also that portion of the public right-of-way, 25 feet wide, lying south of Lots 6, 7, 8, 9 and 10 and east of Lots 10, 11 and 12 as shown on Plat of Sebec Acres on file in Book 2, Page 28, in the Office of the Clark County Recorder.

BASIS OF BEARINGS

The Nevada Coordinate System-East Zone.

APPROVAL

APPROVED this 12th day of October, 1964.

[Signature]
 CITY ENGINEER
 Nevada R.E. No. 396

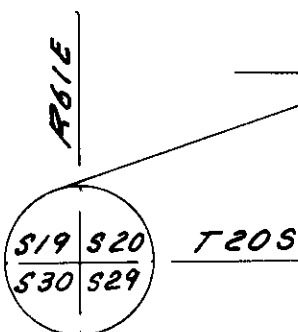
GRAPHIC SCALE



3-53

BOUNDARY SURVEY OF Portion of S 1/2, SW 1/4, SW 1/4, Sec. 20, T20S, R61E, M.D.B.M. Annexed to the City of Las Vegas, Nevada, under Ordinance No. 1054.	NO. 473987
	FILED AT THE REQUEST OF
	<i>City of Las Vegas</i>
	Date 12-2-64 at 10:42 A.M.
	FILE 15 PAGE 53 of Surveys
OFFICIAL RECORDS BOOK NO. 589	
CLARK COUNTY, NEVADA, RECORDS	
PAUL E. HORN, RECORDER	
Fee \$ <i>dh</i> <i>gt</i> Deputy	

Set Spk & Tin
 per Bk. 4 - Pg. 98



Fd. CLV Conc. Mon. on surface

W 1/4 Cor.
 Fd. Conc. Mon. Tagged R.E. 560
 7' below surface

N89°46'39"E
 Fd. bolt in 4" I.P.

Vegas Drive

RECORD BEARINGS THIS LINE
 N89°52'24"W File 6 Page 48
 N89°54'32"W " 9 " 30

N89°46'39"E 485.50'
 691.95'

N36°41'33"W

N0°10'34"E
 653.60'