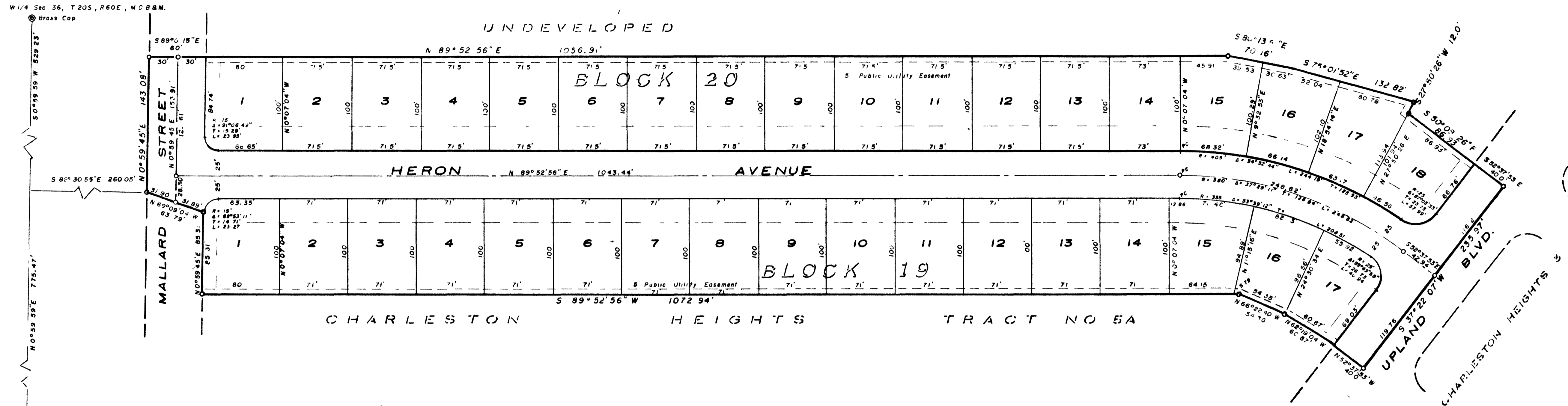


CHARLESTON HEIGHTS TRACT NO.8

A PORTION OF THE SW 1/4 SECTION 36

T.20S., R.60E., M.D.B.&M.

UNIT 1



ENGINEER'S CERTIFICATE

I, Karsten T. Bronken, a duly Registered Professional Engineer and licensed Land Surveyor in the State of Nevada, do hereby certify that this plat is a true and accurate map of the land surveyed by me and laid out into blocks, lots and streets of the instance of the Land O' Sun Land Co., that the location of said blocks, lots and streets have been definitely established and perpetuated in strict accordance with the law and as shown hereon within the SW 1/4 of Sec. 36, T. 20 S., R. 60 E., M. D. B. & M. in the City of Las Vegas, Clark County, Nevada, and more particularly described as follows: commencing at the W 1/4 corner of said Section 36 run thence S 0° 59' 59" W 529.23 ft to a point; thence S 89° 30' 55" E 260.05 ft to the real point of beginning; thence N 0° 59' 45" E 143.08 ft, thence S 89° 0' 15" E 60.0 ft, thence N 89° 52' 56" E 1056.91 ft, thence S 80° 13' 51" E 70.16 ft, thence S 75° 01' 52" E 132.82 ft, thence S 27° 50' 26" W 12.0 feet, thence S 50° 09' 26" E 86.93 ft, thence S 52° 37' 53" E 40.0 ft, thence S 37° 22' 07" W 235.97 ft, thence N 52° 37' 53" W 40.0 ft, thence N 62° 19' 04" W 60.87 ft, thence N 66° 22' 40" W 54.38 ft, thence S 89° 52' 56" W 1072.94 ft thence N 0° 59' 45" E 85.31 ft, thence N 69° 09' 04" W 63.79 ft to the point of beginning. The survey was completed 27 March, 1958.

Karsten T. Bronken
Reg. Prof. Engr. and Land Surveyor - Nev. R.E. 618

OWNER'S CERTIFICATE AND DEDICATION

KNOW ALL MEN BY THESE PRESENTS; that the Land O' Sun Land Co., a Nevada Corporation, does hereby certify that it is the owner of the parcel of land which is shown on the accompanying plat of Charleston Heights Tract No. 8, Unit 1, and more particularly described in the Engineer's Certificate hereon, and have consented and do hereby consent to the preparation and recordation of this plat, and do hereby dedicate the streets as indicated and shown hereon for the use of the public. Public Utility Easements are granted for their use by public utilities only. In witness whereof we have hereunto set our hands and affixed the Corporate Seal this 4th day of April, 1958.

LAND O' SUN LAND CO.

R. Lewis
Secretary

Franklin L. Burns
President

ACKNOWLEDGMENT

STATE OF NEVADA
COUNTY OF CLARK

On this 4th day of April, 1958, personally appeared before Georgia Tregaskis, a Notary Public in and for said County and State, Franklin L. Burns and Robert E. Lewis known to me to be the President and Secretary of the Corporation that executed the foregoing instrument, and upon oath, did each depose that he is the officer of the said Corporation as above designated, that they are acquainted with the Seal of said Corporation, that the signatures to said instrument were made by officers of said Corporation as indicated after said signatures, and that the said Corporation executed the said instrument freely and voluntarily, and for the purposes therein mentioned.

My Commission expires March 26, 1962

Georgia Tregaskis
Notary Public in and for said County and State

CITY ENGINEER'S CERTIFICATE

I, R. P. SAUER, City Engineer of the City of Las Vegas, Nevada, do hereby certify that I have examined the final map of CHARLESTON HEIGHTS TRACT NO. 8, that the subdivision as shown hereon is substantially the same as it appeared on the Tentative Map, and approved alterations thereof, that the provisions of the Planning Commission Act, and any local ordinances applicable at the time of the approval of the Tentative Map have been complied with, and that I am satisfied this map is technically correct.

Date 5-21, 1958

R. P. Sauer
City Engineer Reg. Prof. Engr. No. 396

APPROVALS

In conformity with the Tentative Map, approved this 8th day of May, 1958, by the City Planning Commission of the City of Las Vegas, Clark County, Nevada.

Franklin L. Burns
Secretary

Approved and accepted this 4th day of May, 1958, by the Board of Commissioners of the City of Las Vegas, Clark County, Nevada.

Attest: *Harvey Adams*
City Clerk

R. D. Baker
Mayor

SCALE - 60
basis of bearing North Boundary of Charleston Heights Tract 5A - Book 5 Page 16 Clark County Records
o Concrete monuments set



NO. 131704
RECORDED AT THE REQUEST OF
Land O' Sun Land Co.
Date 5-23-58 at 1:47 PM
BOOK 5 PAGE 22
CLARK COUNTY, NEVADA, RECORDS
PAUL C. O'MALLEY, REC'D
Fee \$12.25

10535
BOOK PAGE

1040-8

1160

