

ELECTRICAL COMMUNICATION PLAN AREA A

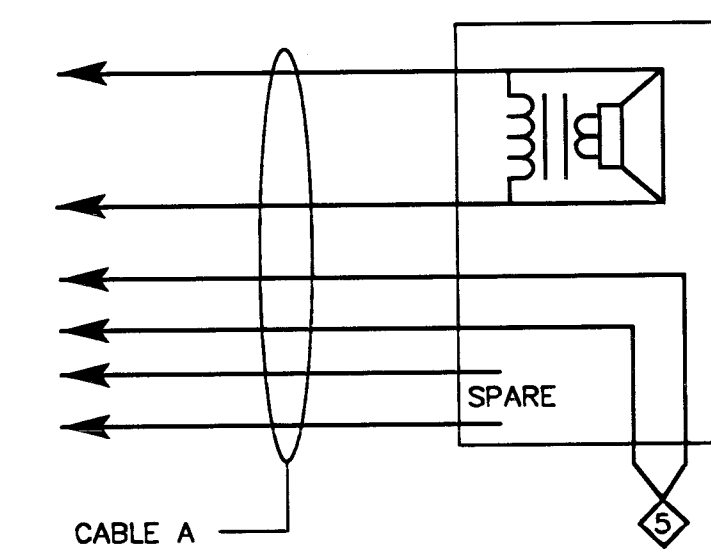
SCALE: 1/8"=1'-0"

NOTES:

- 1 REFER TO RFI#57
- 1 J-BOX FOR SCOREBOARD CONTROL. INSTALL J-BOX PER MANUFACTURERS REQUIREMENTS. SEE DETAIL 8/E4.01 FOR ADDITIONAL INFORMATION.
- 2 VERIFY MOUNTING HEIGHT WITH ARCHITECT.
- 3 J-BOX FOR CCU. COORDINATE INSTALLATION WITH IRRIGATION CONTRACTOR.
- 4 J-BOX FOR FUTURE SPEAKERS.
- 5 PROVIDE WIRE CAGE.
- 6 SOUND EQUIPMENT RACK. SEE E3.02 FOR LOCATION OF FUTURE EQUIPMENT. ROUTE 3/4" C.O. FROM SOUND EQUIPMENT TO FUTURE EQUIPMENT RACK LOCATION.
- 7 SEE DETAIL 1/E4.04 FOR CONDUIT INFORMATION. MOUNT 4-S BOX NEAR TO TOP OF WALL AT STRUCTURAL CEILING.
- 8 ROUTE CABLE A, 3/4" C TO CLOCK INTERCOM CABINET RM 403.
- 9 SEE DETAIL 4/E4.01 FOR ADDITIONAL INFORMATION.
- 10 ROUTE 1" TO MAIN IDF ROOM.
- 11 PROVIDE ADDITIONAL CONDUIT AS INDICATED ON DETAIL 8/E4.01.
- 12 PROVIDE J-BOX FOR FUTURE REPEATERS. ROUTE 3/4" C TO FUTURE EQUIPMENT RACK. SEE E3.02 FOR LOCATION.

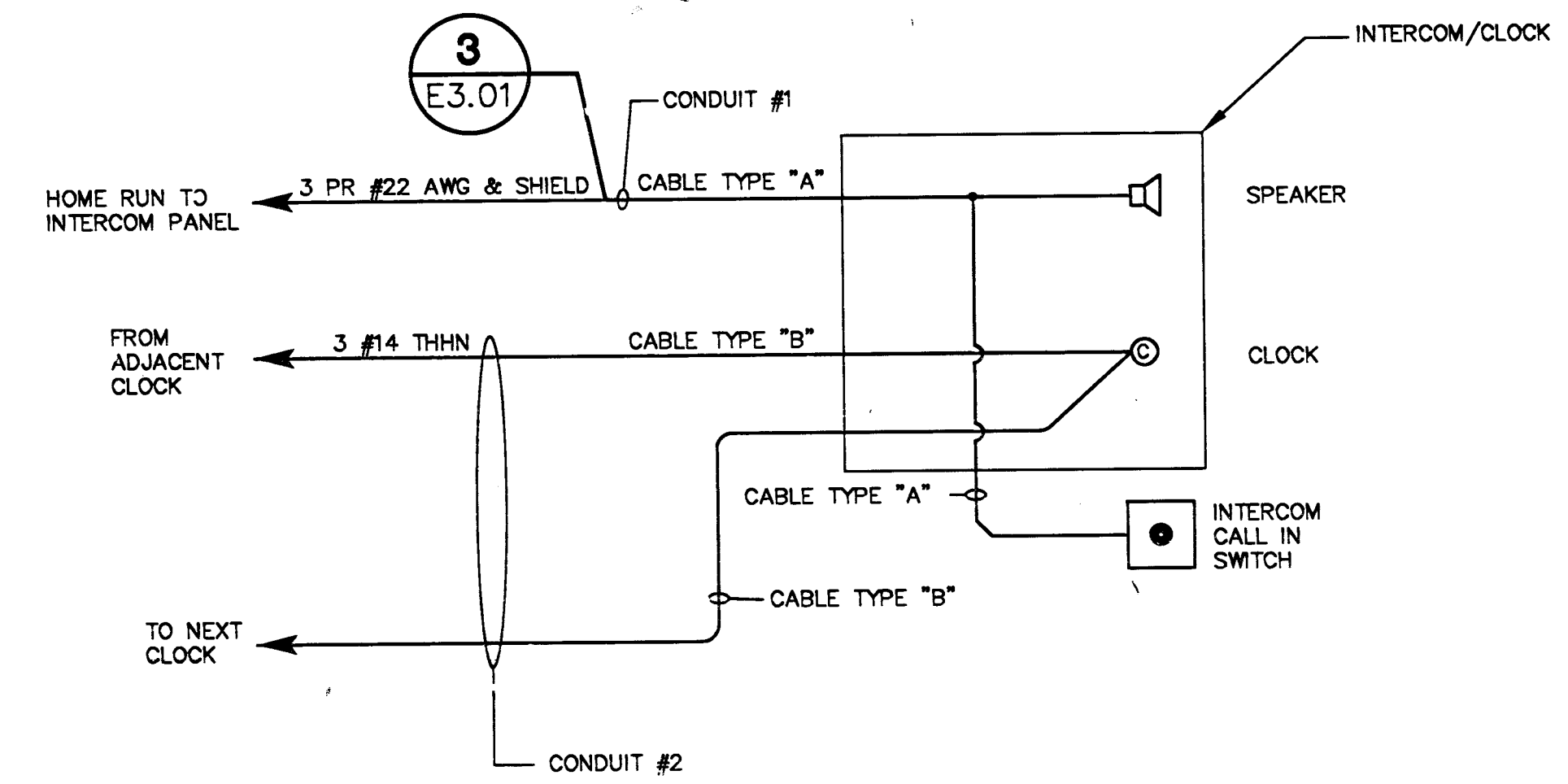
GENERAL NOTES:

1. ALL CONDUIT IS 3/4" C MIN. UNO.
2. CONTRACTOR MAY COMBINE ALL TYPE A HOMERUNS.
3. MOUNT ALL EXPOSED CONDUIT ALONG CEILING SNUG TO BOTTOM OF STRUCTURE.
4. SURFACE MOUNTED CONDUITS ARE NOT ACCEPTABLE. ALL CONDUITS ARE TO BE CONCEALED WITHIN WALLS OR BELOW GRADE.
5. ALL WIRING AND CONDUIT SHALL BE CONCEALED WITHIN THE WALLS, INCLUDING BLOCK WALLS. COORDINATE CONDUIT INSTALLATION WITH OTHER TRADES PRIOR TO ROUGH-IN.
6. REFER TO SPECIFICATIONS AND ARCHITECTURAL FINISH SCHEDULE FOR DEVICE COVERPLATE REQUIREMENTS.



3 CABLE A WIRING DIAGRAM

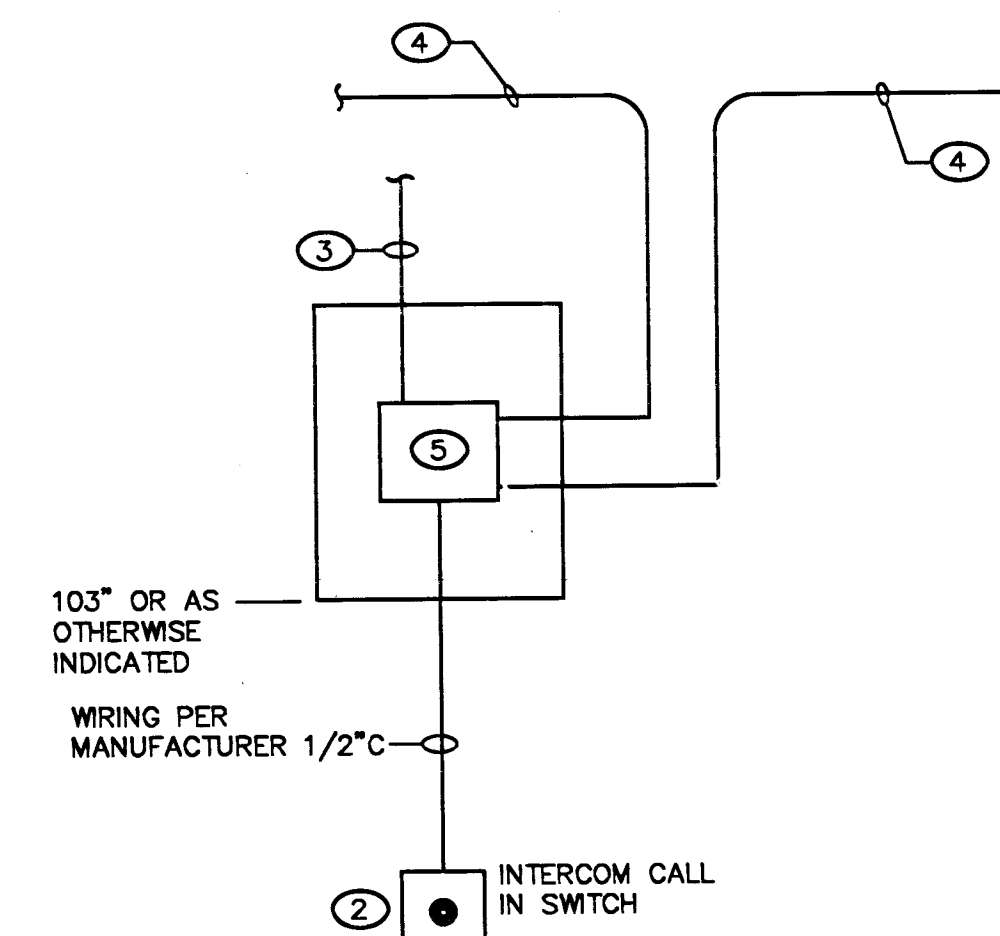
E3.01 SCALE: N.T.S.



1 SEE MANUFACTURERS WIRING DIAGRAM FOR SUPERVISORY WIRING OF SPEAKERS TO BE CONNECTED BY CONTRACTOR.

2 TYPICAL CLASSROOM WIRING DIAGRAM

E3.01 SCALE: N.T.S.



1 TIME/TONE MOUNTING AND WIRING DETAIL

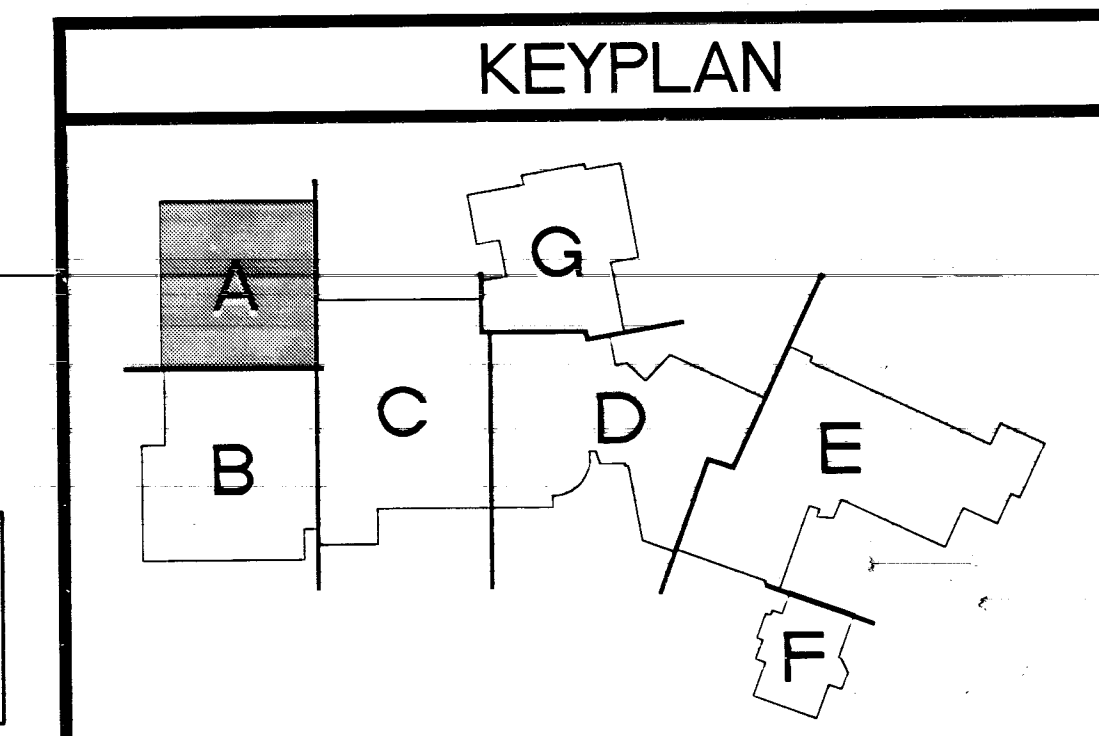
E3.01

NOTES:

- 1 INSTALL TIME/TONE UNIT BACK BOX FURNISHED BY CONTRACTOR. (SURFACE MOUNT)
- 2 PROVIDE JUNCTION BOX AT 48" AFF TO TOP OF BOX WITHOUT OBSTRUCTION OR 44" AFF TO TOP OF BOX WITH OBSTRUCTION FOR CALL SWITCH.
- 3 TONE UNIT CONDUITS.
- 4 CLOCK SYSTEM LOOP CONDUITS.
- 5 4" SQUARE BOX WITH SINGLE GANG PLASTER RING. MOUNTED BEHIND TIME/TONE UNIT BACKBOX. (FLUSH WITH WALL).

CABLING SCHEDULE

SPEAKER	A	3pr #22 WITH SHIELD
CLOCK	B	3#14, THNN



THESE RECORD DOCUMENTS HAVE BEEN PREPARED BASED ON INFORMATION PROVIDED BY OTHERS. THE DESIGN PROFESSIONAL HAS NOT VERIFIED THE ACCURACY AND/OR COMPLETENESS OF THIS INFORMATION AND SHALL NOT BE RESPONSIBLE FOR ANY ERRORS OR OMISSIONS WHICH MAY BE INCORPORATED HEREIN AS A RESULT.

DIVISIONS
 RECORD DRAWINGS 10/20/07
 CONSTRUCTION
 500 PLOT ROAD, SUITE A
 LAS VEGAS, NEVADA 89119
 (702) 253-7111
 (702) 253-8111 FAX
LUCCHESE • GALATI II
 ARCHITECTS

OWNER: CITY OF LAS VEGAS
 DEPARTMENT OF PUBLIC WORKS
 ARCHITECTURAL SERVICES
 400 EAST STEWART AVENUE
 LAS VEGAS, NEVADA 89101
 PHONE: (702) 228-8338
 FAX: (702) 584-8846
 TDD: (702) 586-9108

CITY OF LAS VEGAS
 CENTENNIAL HILLS COMMUNITY CENTER
 RECORD DRAWINGS
 ELECTRICAL COMMUNICATION PLAN AREA A

DATE: 09/20/07
 SCALE: 05.134101
 DRAWING NO: 611-43
 SHEET NO: E3.01