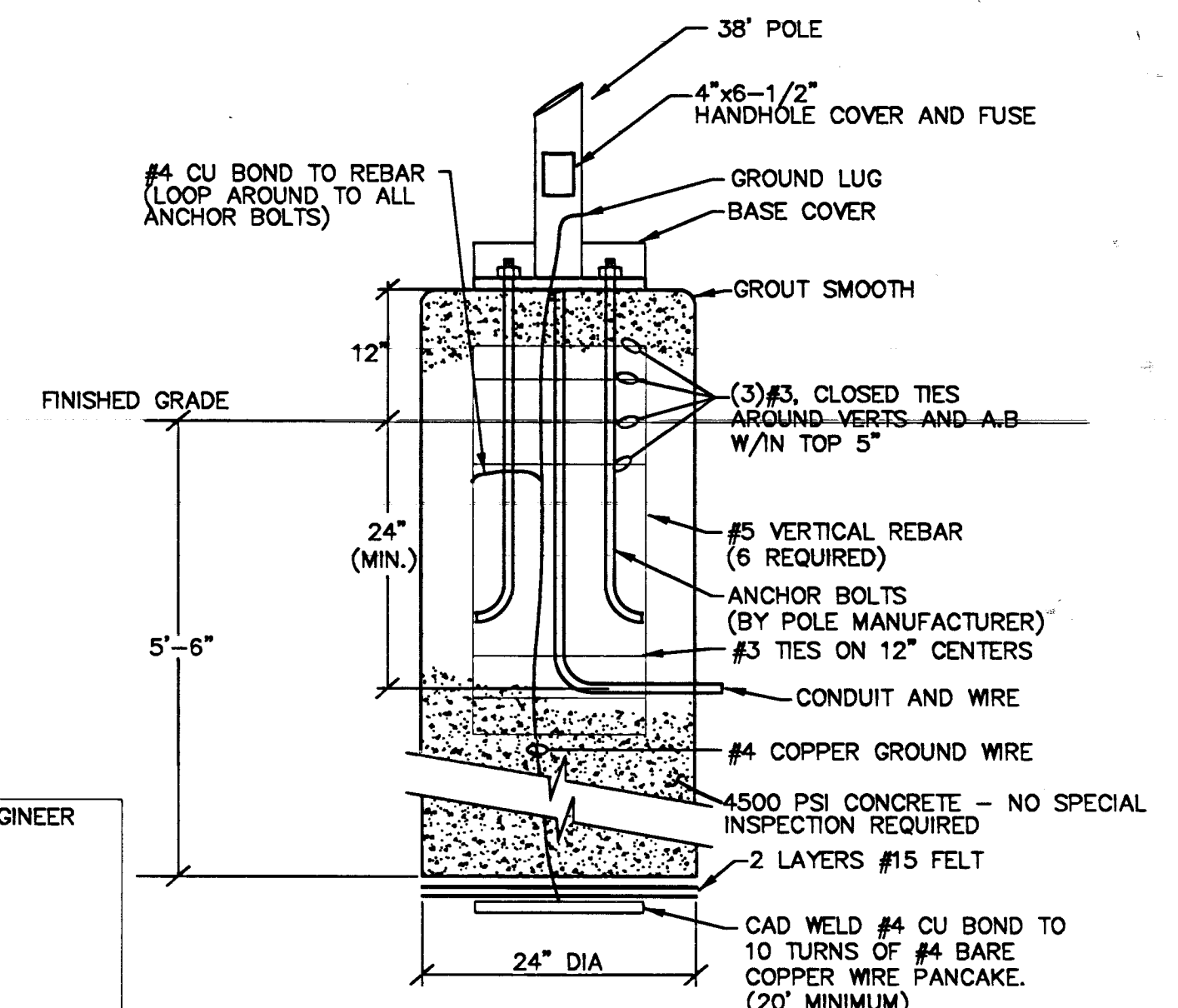


**ELECTRICAL SITE PLAN - ENLARGED POOL AREA**

SCALE: 1"=20'-0"

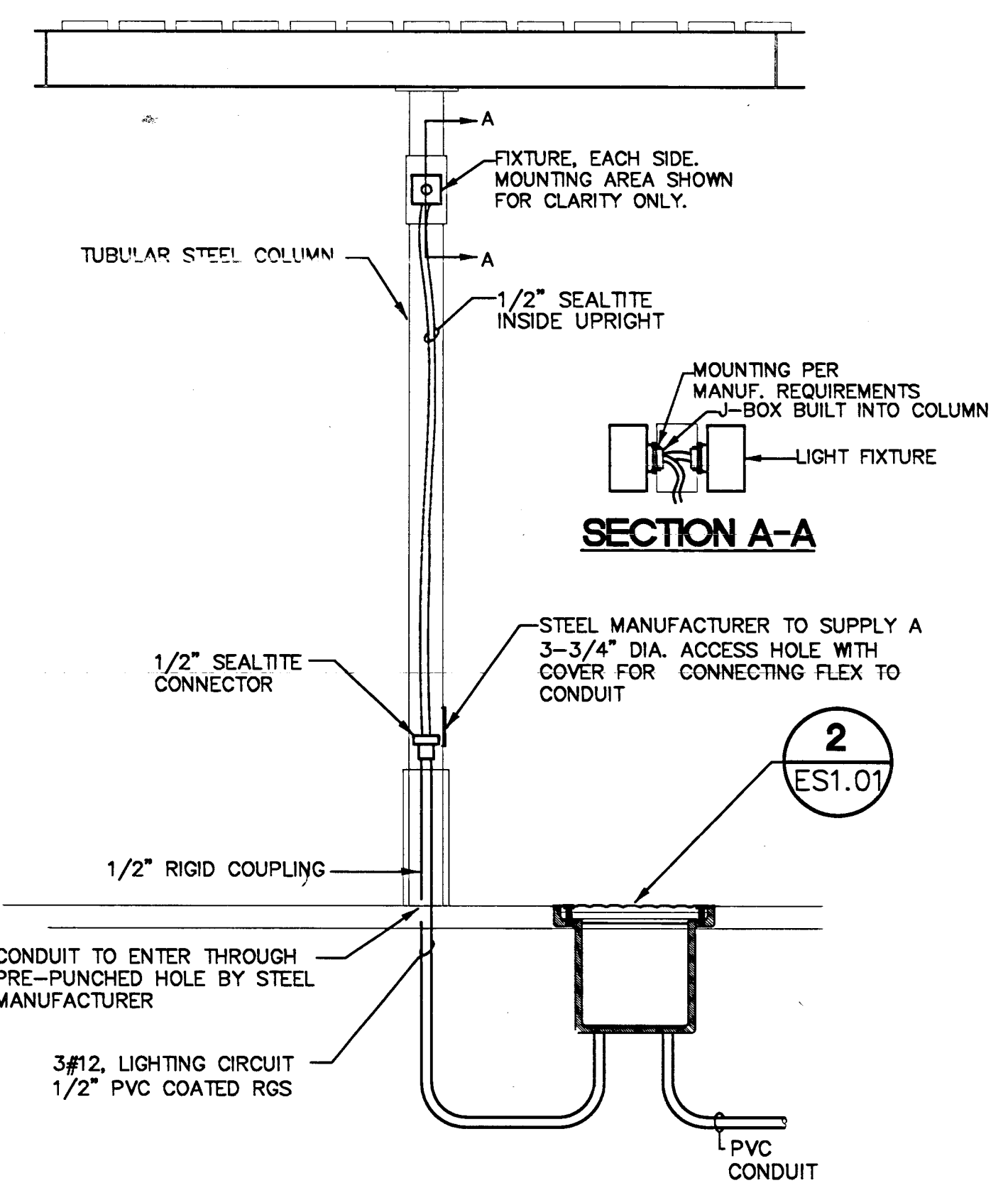
**NOTES:**

- ① PROVIDE WEATHERPROOF J-BOX FOR FUTURE CAMERA ON EXTENSION OF WALL AT 12" BELOW ROOF EDGE.
- ② ROUTE THROUGH CONTACTOR SCHEDULE.
- ③ J-BOX FOR GATE ALERT SYSTEM.
- ④ ROUTE 3/4" C TO ALERT SYSTEM POWER.
- ⑤ J-BOX FOR ALERT SYSTEM POWER.
- ⑥ 4-ZONE CONSOLE AT DESK. SEE DOOR HARDWARE SPECIFICATION FOR ADDITIONAL INFORMATION.
- ⑦ ROUTE (2) 3/4" C UNDERGROUND FOR FUTURE ADDITION OF CANOPY LIGHTING AND POWER. COORDINATE LOCATION WITH AREA INDICATED ON ARCHITECTURAL DRAWINGS FOR FUTURE CANOPY LOCATIONS.
- ⑧ PROVIDE ENDCAPS.
- ⑨ FIXTURE F18 WILL BE INSTALLED AT 20' AFG ON THE F2 POLE. COORDINATE INSTALLATION. SEE ES1.01 FOR ADDITIONAL INFORMATION.
- ⑩ COORDINATE INSTALLATION AT FIXTURE POLEBASE WITH WALL POURS. SEE CIVIL DRAWINGS FOR ADDITIONAL INFORMATION.



**1 POLEBASE DETAIL - POOL AREA F2**

ES1.02 NOT TO SCALE  
 ○ CALCULATIONS BASED ON 4500 PSI.



**2 COLUMN MOUNTED FIXTURE AT CANOPY**

ES1.02 NOT TO SCALE

- 2.11 REFERENCE: DRAWING ES1.02  
 DELETE: THE TWO F38 FIXTURES MOUNTED ON THE EXTERIOR SOUTH WALL OF THE INDOOR POOL.  
 REPLACE WITH: ONE POLE MOUNTED FIXTURE CENTERED ALONG THE EXTERIOR SOUTH WALL OF THE INDOOR POOL. APPROXIMATELY 3'-0" FROM THE PLANTER WALL. FIXTURE SHALL BE EQUAL TO LITHONIA CAT# KAD-250M-R3-480-SP13-DF, POLE CAT# SSS-15-4C.

REVISIONS  
 RECORD DRAWING LOG  
 CONSULTANT  
 500 PLOT ROAD, SUITE A  
 LAS VEGAS, NEVADA 89109  
 (702) 265-7111  
 (702) 265-7111 FAX



Disclaimer: These record drawings prepared by Lucchese Galati Architects, Inc. are based on information provided by others. Lucchese Galati Architects, Inc. has not verified the accuracy and/or completeness of its information supplied by others, and shall not be responsible for any errors or omissions, which may be incorporated herein as a result.

CITY OF LAS VEGAS  
 CENTENNIAL HILLS COMMUNITY CENTER  
 RECORD DRAWINGS  
 ELECTRICAL SITE PLAN - ENLARGED POOL AREA

OWNER: CITY OF LAS VEGAS  
 DEPARTMENT OF PUBLIC WORKS  
 ARCHITECTURAL SERVICES

400 EAST STEWART AVENUE  
 LAS VEGAS, NEVADA 89101  
 PHONE: (702) 228-2222  
 FAX: (702) 228-8888  
 TDD: (702) 228-8100

DATE	05/10/05
SCALE	05/15/01
DATE	6-11-05

ES1.02