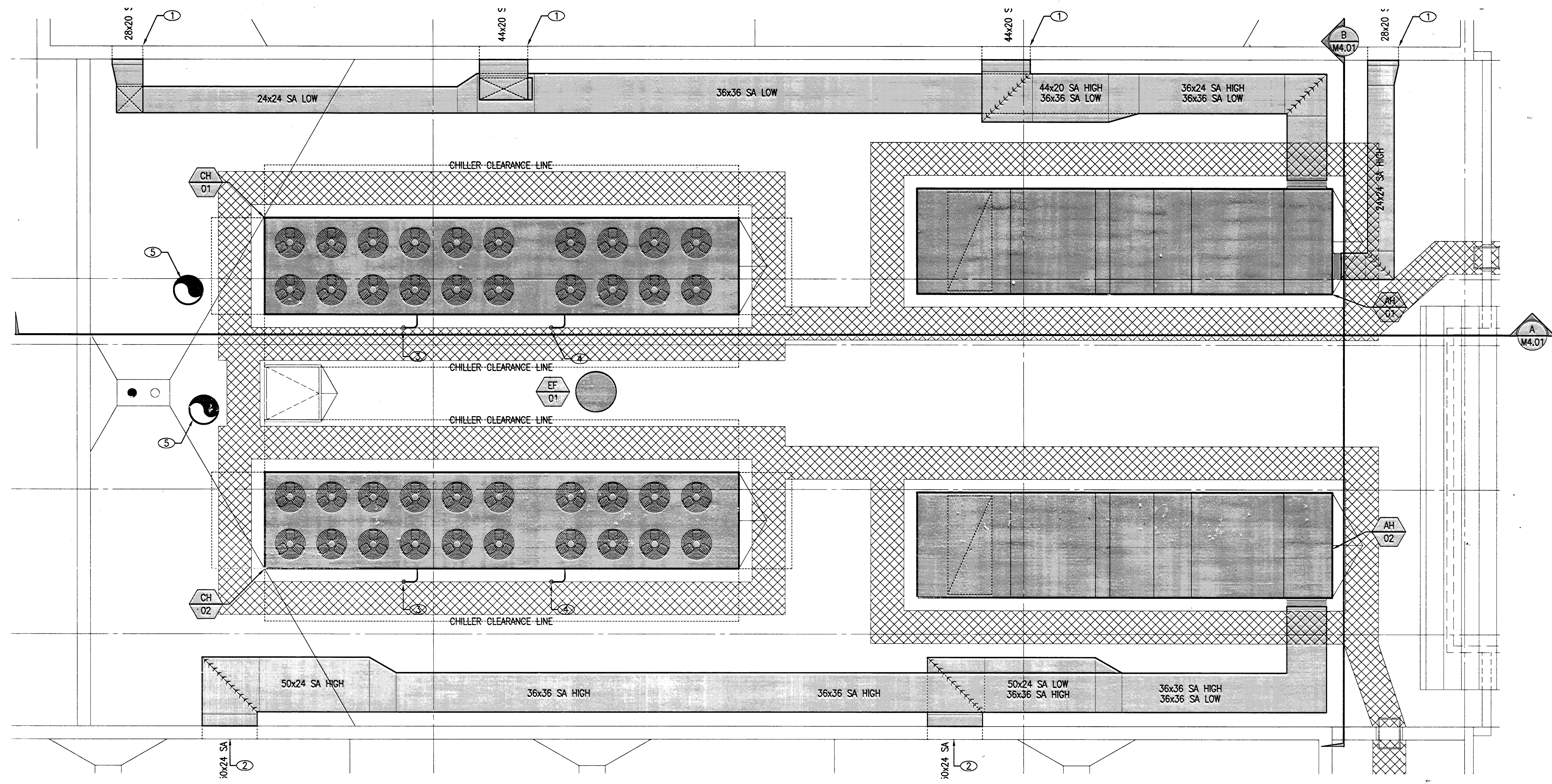
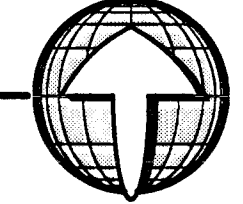


SHEET NOTES 1/M4.00

- ① SEE SHEET M2.01 FOR CONTINUATION.
- ② SEE SHEET M2.02 FOR CONTINUATION.
- ③ 5" CHS DOWN THRU ROOF.
- ④ 5" CHR THRU ROOF FROM BELOW.
- ⑤ 26" BOILER VENT THRU ROOF.



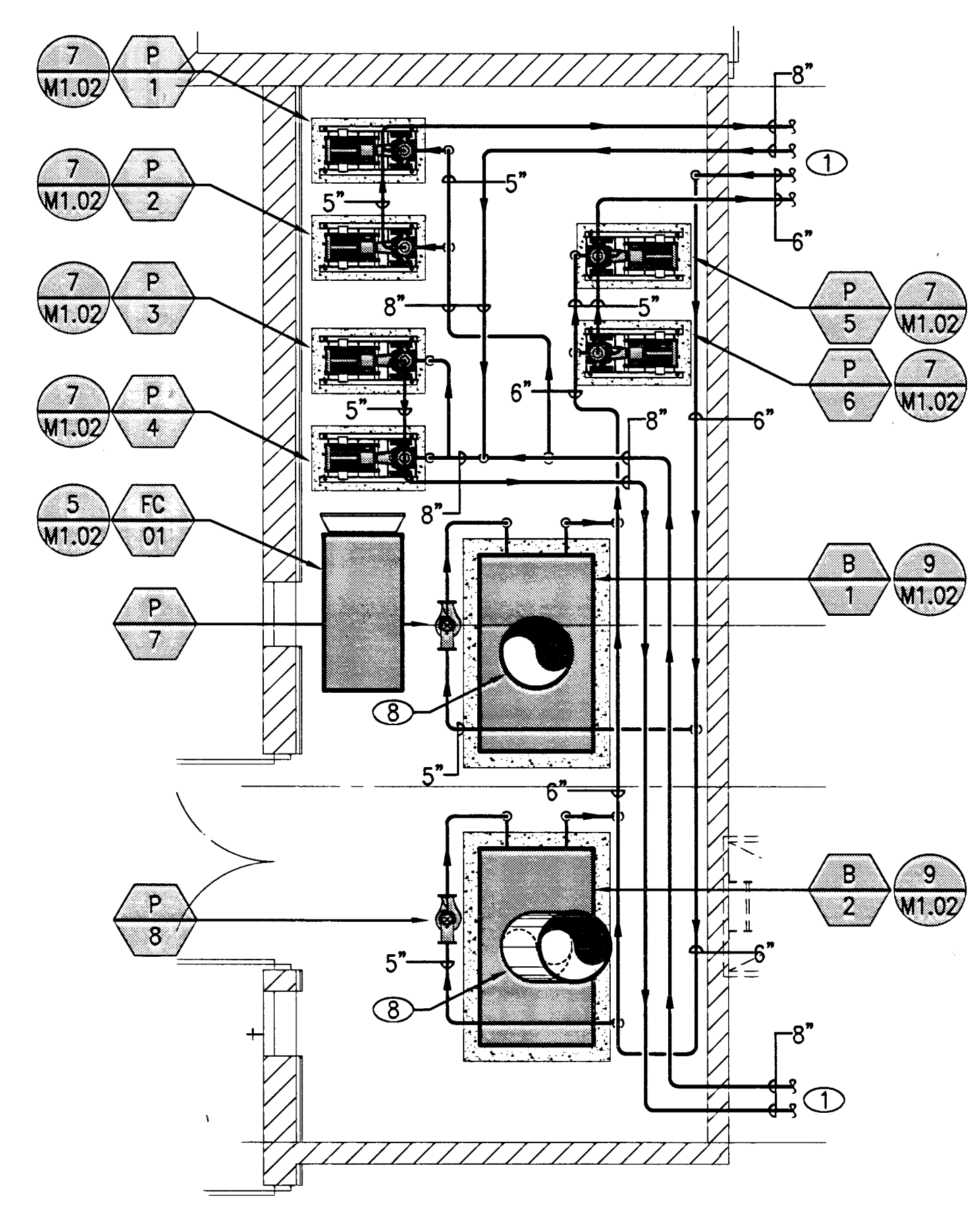
1 ROOF PLAN - AREA B
M4.00 SCALE: 1/8" = 1'-0"



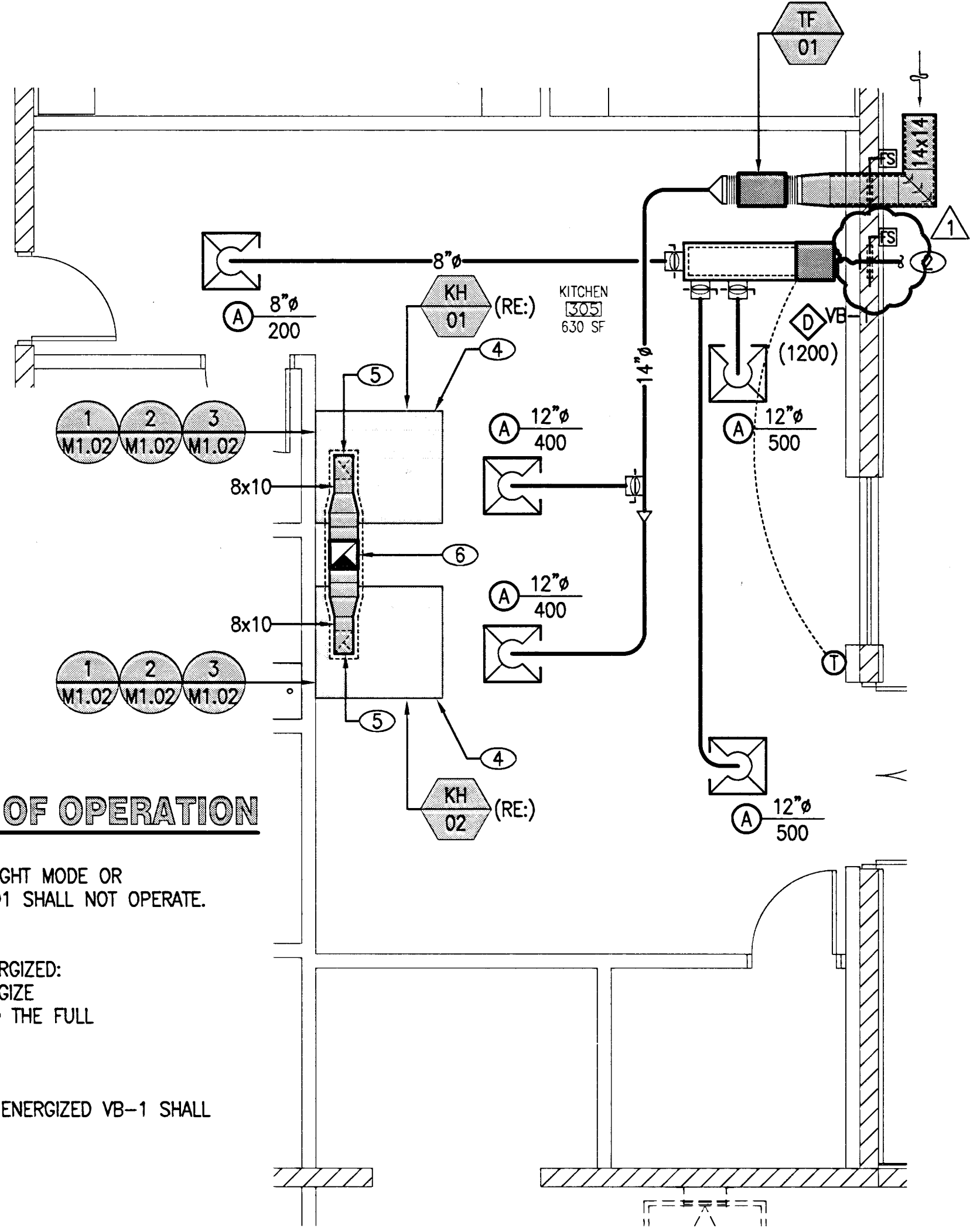
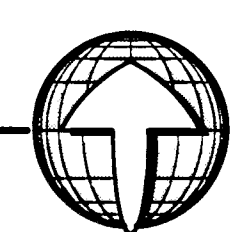
SHEET NOTES 2,3,4/M4.00

- ① SEE SHEET M2.02 FOR CONTINUATION.
- ② SEE SHEET M2.03 FOR CONTINUATION.
- ③ SEE SHEET M2.07 FOR CONTINUATION.
- ④ KITCHEN HOOD. SEE KITCHEN EQUIPMENT DRAWINGS.
- ⑤ MAKE CONNECTION TO KITCHEN HOOD.
- ⑥ 12x12 TYPE I GREASE DUCT UP THRU ROOF.
- ⑦ 16x16 TYPE I GREASE DUCT UP THRU ROOF.
- ⑧ 26" BOILER FLUE UP THRU ROOF WITH APPROVED WEATHER CAP.
- ⑨ 8x4 COBUSTION AIR DUCT FROM 12" ABOVE FINISHED FLOOR UP THRU ROOF TO GOOSENECK WITH BIRDSCREEN.
- ⑩ 8x4 COBUSTION AIR DUCT FROM 12" BELOW FINISHED CEILING UP THRU ROOF TO GOOSENECK WITH BIRDSCREEN.

2.17 REFERENCE: M-400 - KITCHEN PART PLAN
ADD: NOTE 11 FOR DRYER VENT AS SHOWN ON ATTACHED SKETCH M4.00-A.



2 MECHANICAL ROOM - AREA B
M4.00 SCALE: 1/4" = 1'-0"



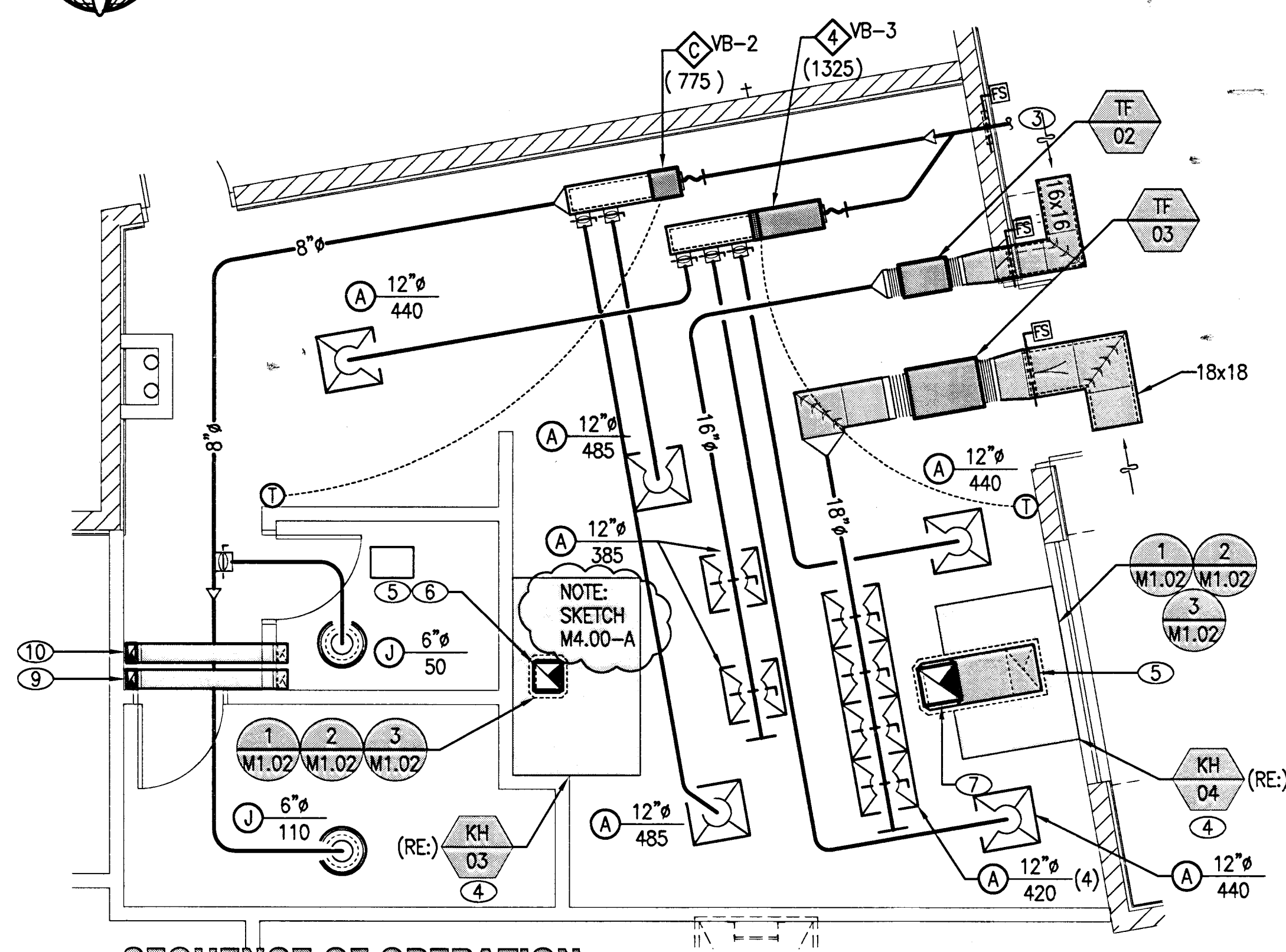
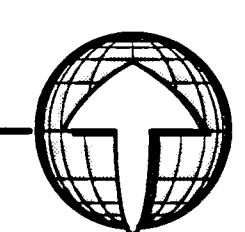
SEQUENCE OF OPERATION

AH-04
WHEN AH-04 IS IN NIGHT MODE OR DE-ENERGIZED, KEF-01 SHALL NOT OPERATE.

KEF-01
WHEN KEF-01 IS ENERGIZED:
- TF-01 SHALL ENERGIZE
- VB-1 SHALL GO TO THE FULL OPEN POSITION.

VB-1
WHEN KEF-01 IS DE-ENERGIZED VB-1 SHALL OPERATE NORMALLY.

3 KITCHEN - RECREATION CENTER - AREA C
M4.00 SCALE: 1/4" = 1'-0"



SEQUENCE OF OPERATION

AH-05
WHEN AH-05 IS IN NIGHT MODE OR DE-ENERGIZED, KEF-02 & KEF-03 SHALL NOT OPERATE.

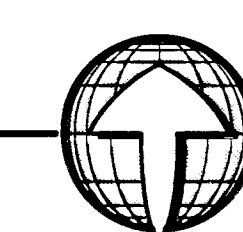
KEF-02
WHEN KEF-02 IS ENERGIZED:
- TF-02 SHALL ENERGIZE
- VB-2 SHALL GO TO THE FULL OPEN POSITION.

KEF-03
WHEN KEF-03 IS ENERGIZED:
- TF-03 SHALL ENERGIZE
- VB-3 SHALL GO TO THE FULL OPEN POSITION.

VB-2
WHEN KEF-02 IS DE-ENERGIZED VB-2 SHALL OPERATE NORMALLY.

VB-3
WHEN KEF-03 IS DE-ENERGIZED VB-3 SHALL OPERATE NORMALLY.

4 KITCHEN - SENIOR CENTER - AREA G
M4.00 SCALE: 1/4" = 1'-0"



127735

018 M4.00.TIF