

SHEET NOTES M2.05

- ① SEE SHEET M2.04 FOR CONTINUATION.
- ② SEE SHEET M2.06 FOR CONTINUATION.
- ③ SEE SHEET M3.00 FOR CONTINUATION.
- ④ 18x18 EA UP THRU ROOF.
- ⑤ 16x16 EA UP THRU ROOF.
- ⑥ 10x10 EA UP THRU ROOF.
- ⑦ 50x50 SA DUCT THRU WALL.
- ⑧ SUPPLY AIR DUCT UP THRU ROOF SAME SIZE AS UNIT OPENING.
- ⑨ RETURN AIR DUCT UP THRU ROOF SAME SIZE AS UNIT OPENING.
- ⑩ 2" HWS/R UP THRU ROOF.
- ⑪ 2" CHS/R UP THRU ROOF.
- ⑫ 3" HWS/R UP THRU ROOF.
- ⑬ 14" FLUE UP THRU ROOF WITH APPROVED WEATHER CAP.
- ⑭ 12" FLUE UP THRU ROOF WITH APPROVED WEATHER CAP.
- ⑮ 10" FLUE UP THRU ROOF WITH APPROVED WEATHER CAP.
- ⑯ 5" FLUE UP THRU ROOF WITH APPROVED WEATHER CAP.
- ⑰ 8x4 COBUSTION AIR DUCT FROM 12" ABOVE FINISHED FLOOR UP THRU ROOF TO GOOSENECK WITH BIRDSCREEN.
- ⑱ 8x4 COBUSTION AIR DUCT FROM 12" BELOW FINISHED CEILING UP THRU ROOF TO GOOSENECK WITH BIRDSCREEN.
- ⑲ 52x24 COBUSTION AIR DUCT FROM 12" ABOVE FINISHED FLOOR UP THRU ROOF TO GOOSENECK WITH BIRDSCREEN.
- ⑳ 52x24 COBUSTION AIR DUCT FROM 12" BELOW FINISHED CEILING UP THRU ROOF TO GOOSENECK WITH BIRDSCREEN.

ROOM NAME SCHEDULE

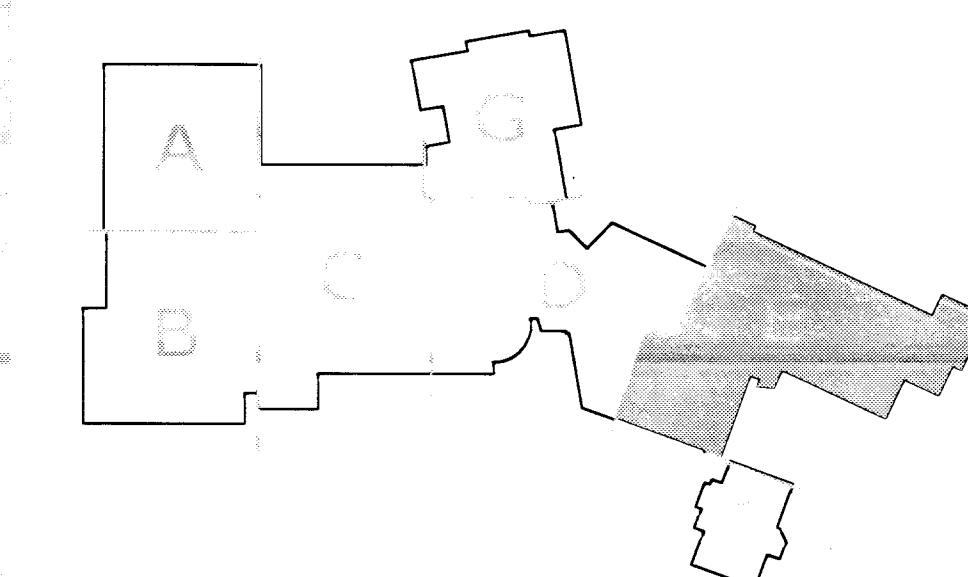
- | | |
|-----|----------------|
| 501 | TEEN CENTER |
| 502 | OFFICE |
| 503 | STORAGE |
| 504 | VIEWING AREA |
| 505 | DECK |
| 506 | LIFEGUARD |
| 507 | OFFICE |
| 508 | TOILET ROOM |
| 509 | LOCKER AREA |
| 511 | TOILET ROOM |
| 512 | LOCKER AREA |
| 513 | TOILET ROOM |
| 514 | DECK STORAGE |
| 515 | POOL EQUIPMENT |
| 516 | STORAGE |
| 517 | STORAGE |
| 518 | STORAGE |
| 519 | DECK STORAGE |

DIFFUSER LEGEND

① - B 20x20	⑤ - C 12" 450	⑨ - C 10x10 165	⑬ - A 8" 136	⑰ - E 12x12 150	⑳ - E 14x14 600
② - C 12" 390	⑥ - A 12" 450	⑩ - B 8x8 105	⑭ - A 12" 340	⑱ - E 12x12 200	
③ - A 12" 530	⑦ - A 12" 500	⑪ - A 6" 75	⑮ - A 10" 280	⑲ - E 14x14 460	
④ - A 12" 530	⑧ - A 12" 500	⑫ - A 12" 370	⑯ - E 12x12 150	⑳ - H 18x12	

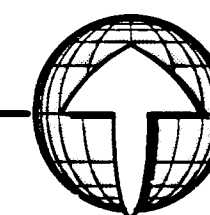
2.18 - ADD METAL LOCKING COVERS AT ALL THERMOSTATS.

KEYPLAN



FLOOR PLAN - AREA E

SCALE: 1/8" = 1'-0"



RECORD DRAWING 10/15/17
 800 WEST ROAD, SUITE A
 LAS VEGAS, NEVADA 89109
 702.333.3311 FAX
LUCCHESE GALATI

Disclaimer: These record drawings prepared by
 Lucchesi Galati Architects, Inc., are based on
 information provided by others. Lucchesi Galati
 Architects, Inc. has not verified the accuracy and/or
 completeness of its information supplied by others,
 and shall not be responsible for any errors or
 omissions, which may be incorporated herein as a
 result.

CITY OF LAS VEGAS
 CENTENNIAL HILLS COMMUNITY CENTER
 FLOOR PLAN - AREA E
 MECHANICAL

05-10-05
 051534101
 671-49

M2.05