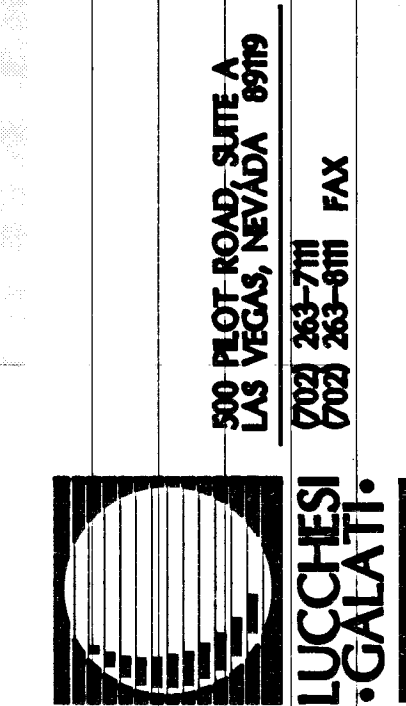


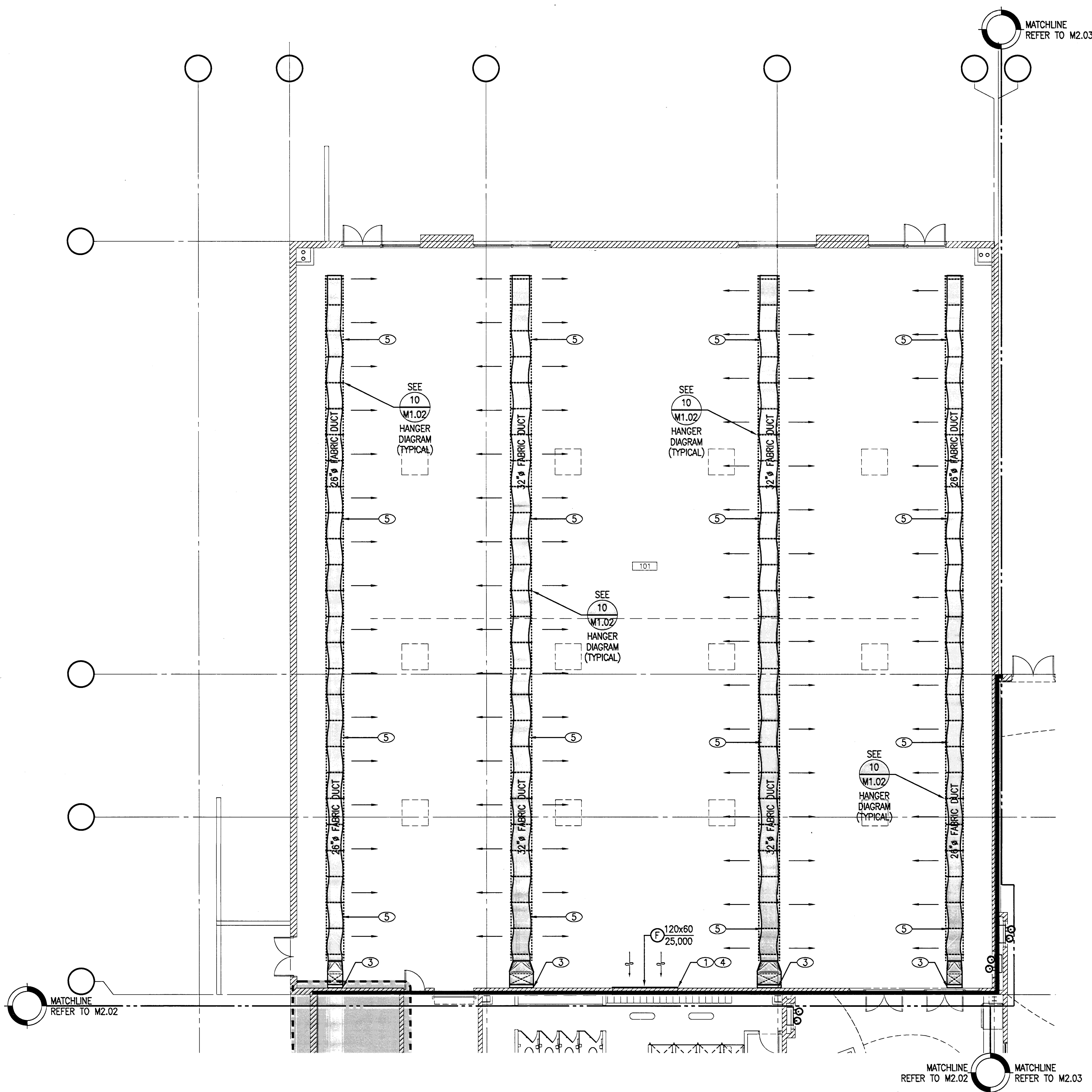
SHEET NOTES M2.01

- ① SEE SHEET M2.02 FOR CONTINUATION.
- ② SEE SHEET M2.03 FOR CONTINUATION.
- ③ SEE SHEET M3.00 FOR CONTINUATION.
- ④ DUCT THRU WALL WITH RETURN AIR LOUVER.
- ⑤ FLEXIBLE DUCT WITH FLEXIBLE DUCT HANGING SYSTEM. HANG FROM STRUCTURE PER MANUFACTURERS INSTALLATION REQUIREMENTS.



Disclaimer: These record drawings prepared by Lucchesi Galati Architects, Inc. are based on information provided by others. Lucchesi Galati Architects, Inc. has not verified the accuracy and/or completeness of its information supplied by others, and shall not be responsible for any errors or omissions, which may be incorporated herein as a result.

CITY OF LAS VEGAS
CENTENNIAL HILLS COMMUNITY CENTER
FLOOR PLAN - AREA A
MECHANICAL

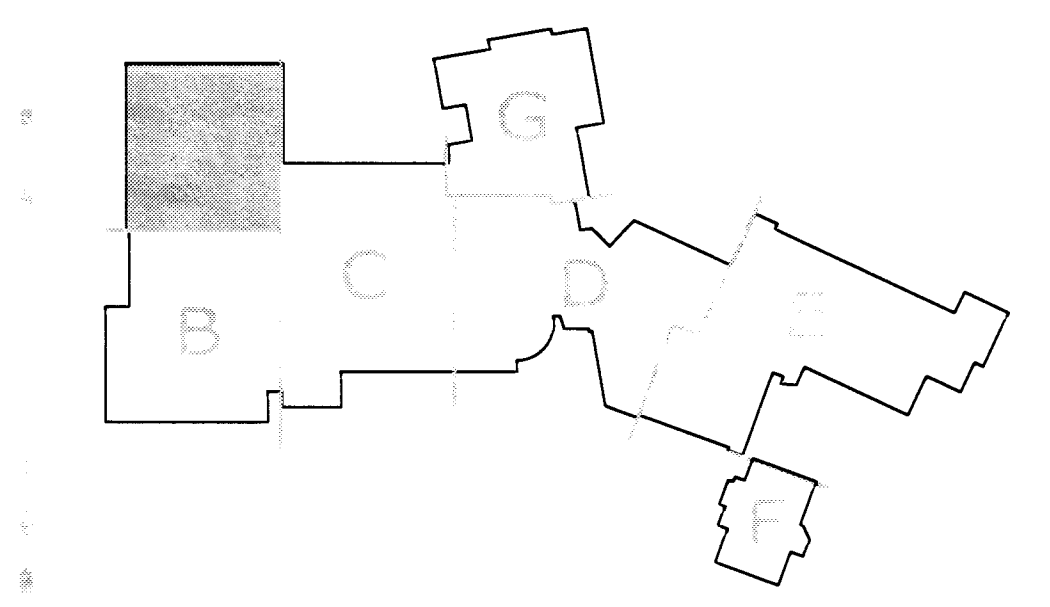


ROOM NAME SCHEDULE

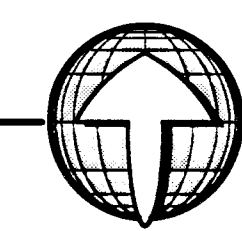
101	GYMNASIUM 1
-----	-------------

2.18 - REFERENCE: Mechanical floor plans - Thermostat locations.
ADD: Provide metal-locking covers at all thermostats.

KEYPLAN



1 FLOOR PLAN - AREA A
M2.01 SCALE: 1/8" = 1'-0"



STAMP

CITY OF LAS VEGAS DEPARTMENT OF PUBLIC WORKS
05.15341.01
671-43

127077