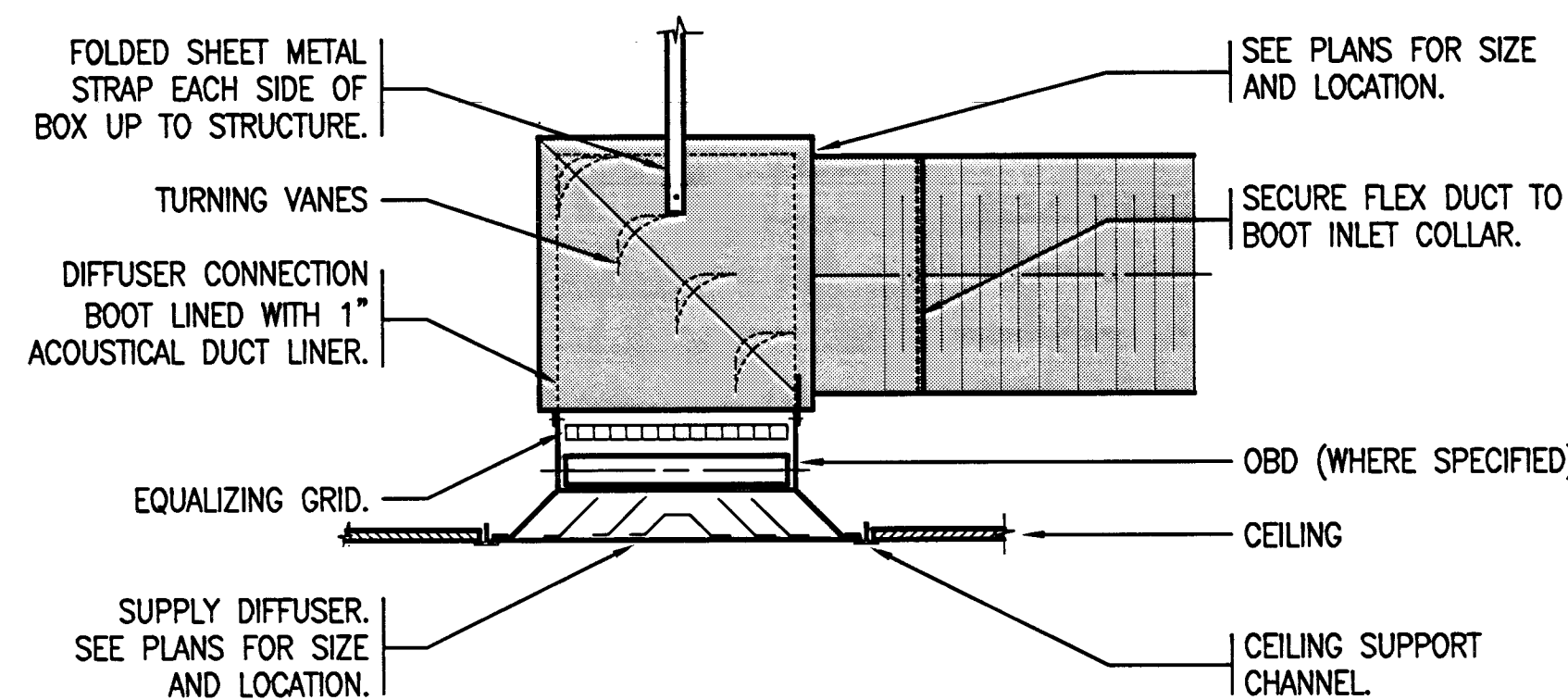


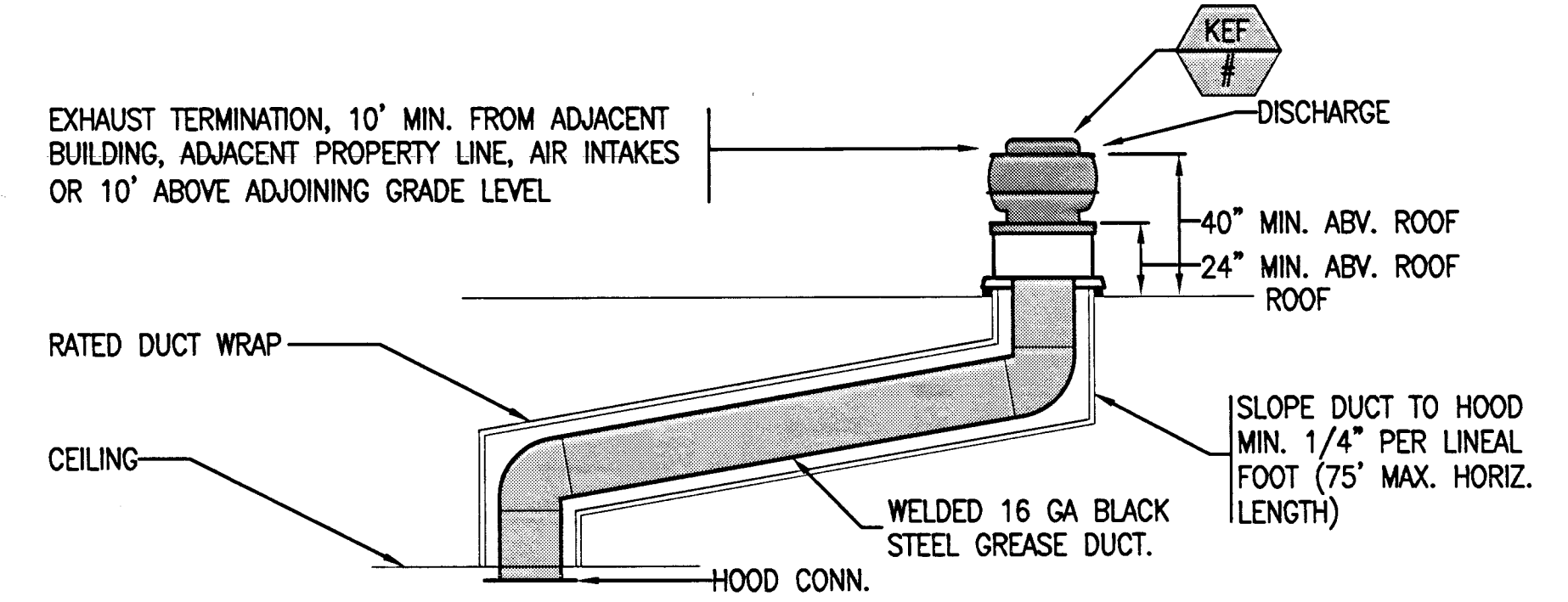
10 FABRIC DUCT HANGER DIAGRAM

W1.02 SCALE: NTS



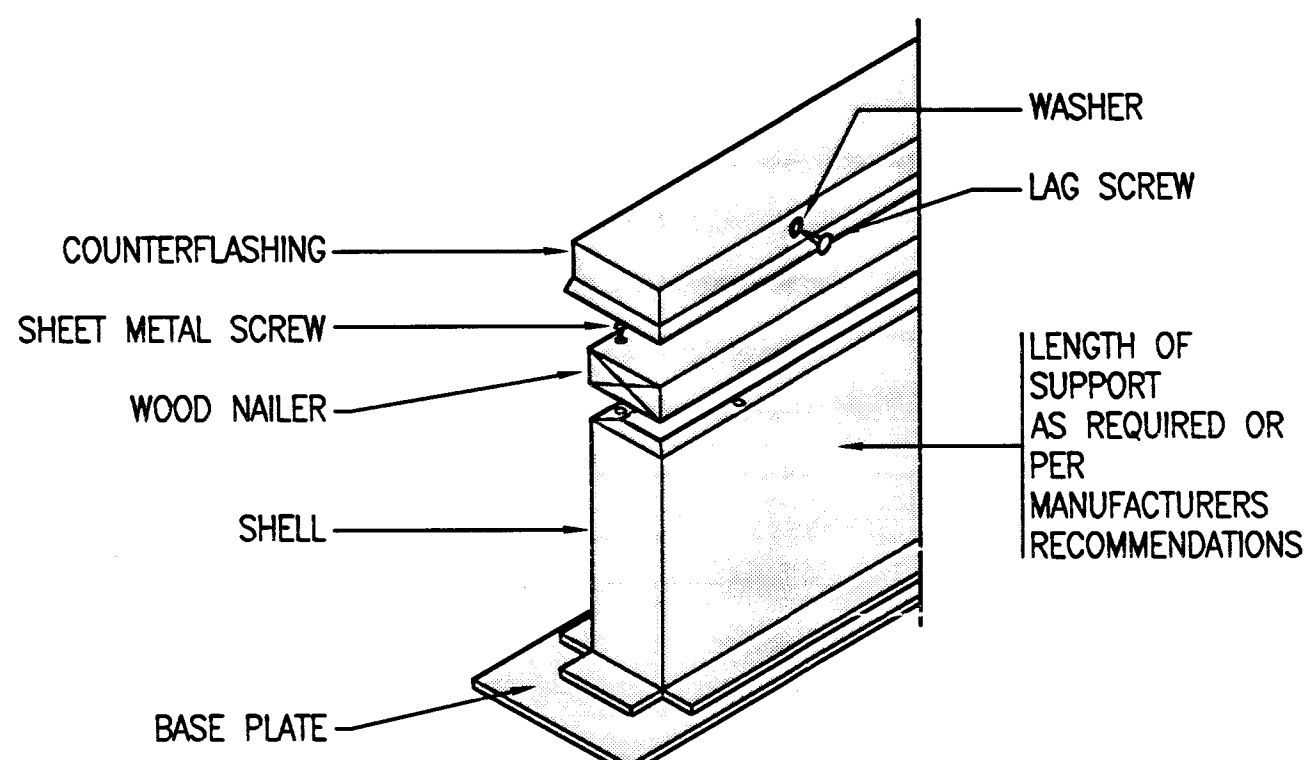
6 SUPPLY DIFFUSER W/ FLEX DUCT DETAIL

W1.02 SCALE: NTS



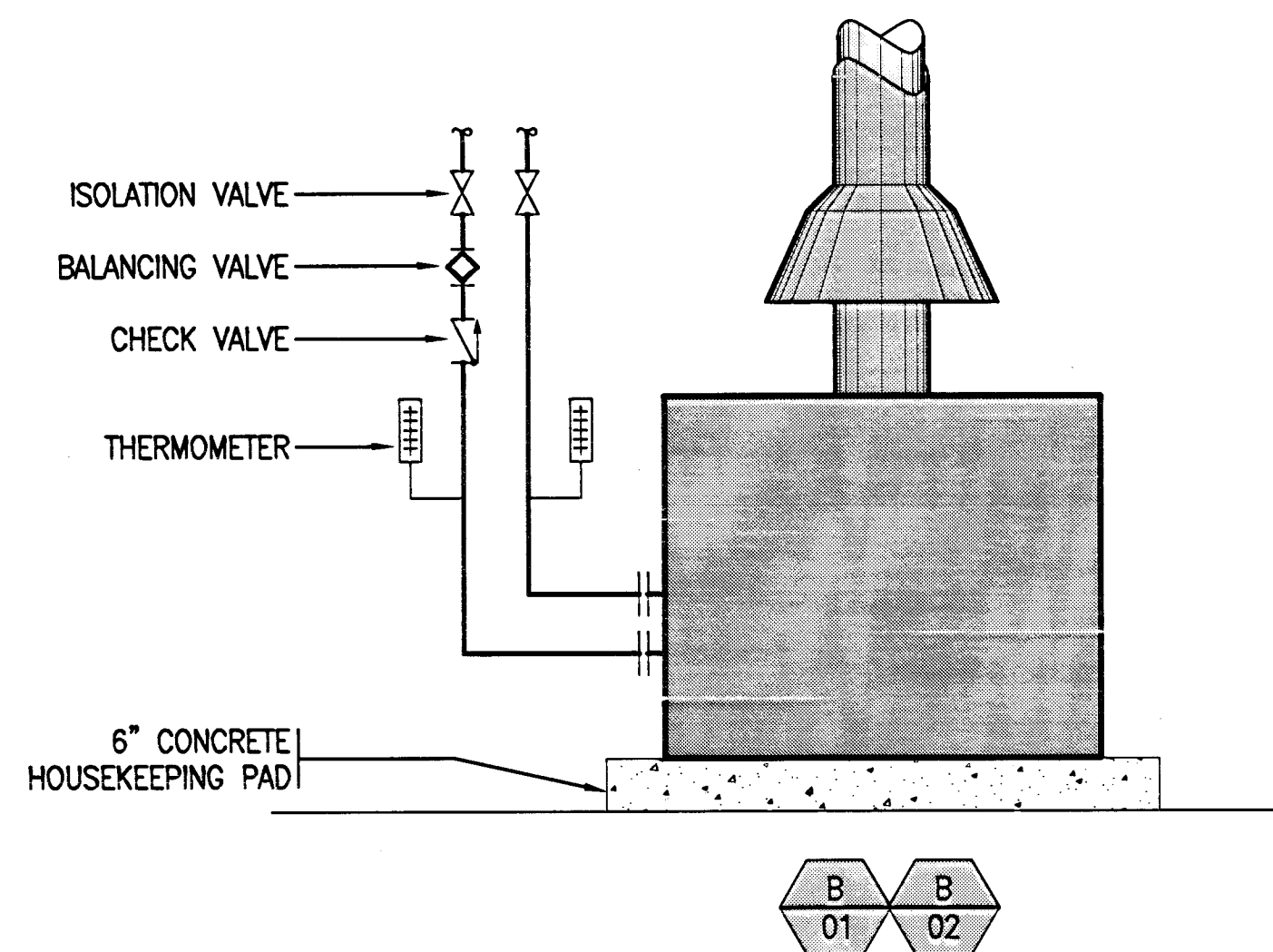
NOTES

1. PROVIDE ADEQUATE CLEANOUT OPENINGS FOR THOROUGH CLEANING OF DUCT SYSTEM.
2. WELD OR BRAZE ALL DUCT JOINTS & SEAMS ON THE EXTERNAL SURFACE.
3. SUPPORT DUCT AS REQUIRED. DO NOT PENETRATE DUCT WITH SCREWS, NAILS, ETC.
4. SECTIONS OF DUCT SHALL NOT CONTAIN GREASE POCKETS.
5. DUCT TO BE CONSTRUCTED OF 16 GA WELDED BLACK STEEL.



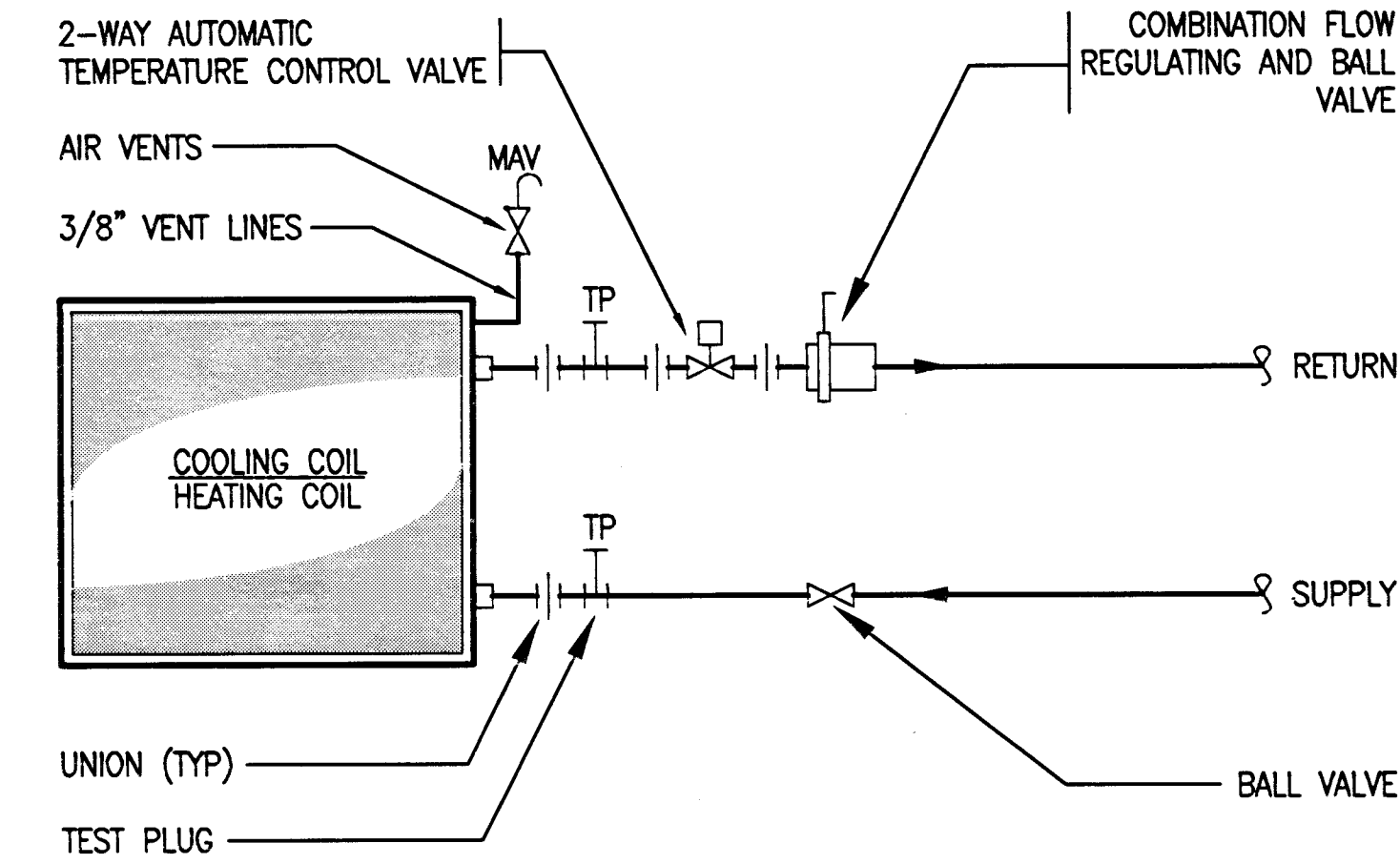
13 EQUIPMENT MOUNTING SUPPORT

W1.02 SCALE: NTS



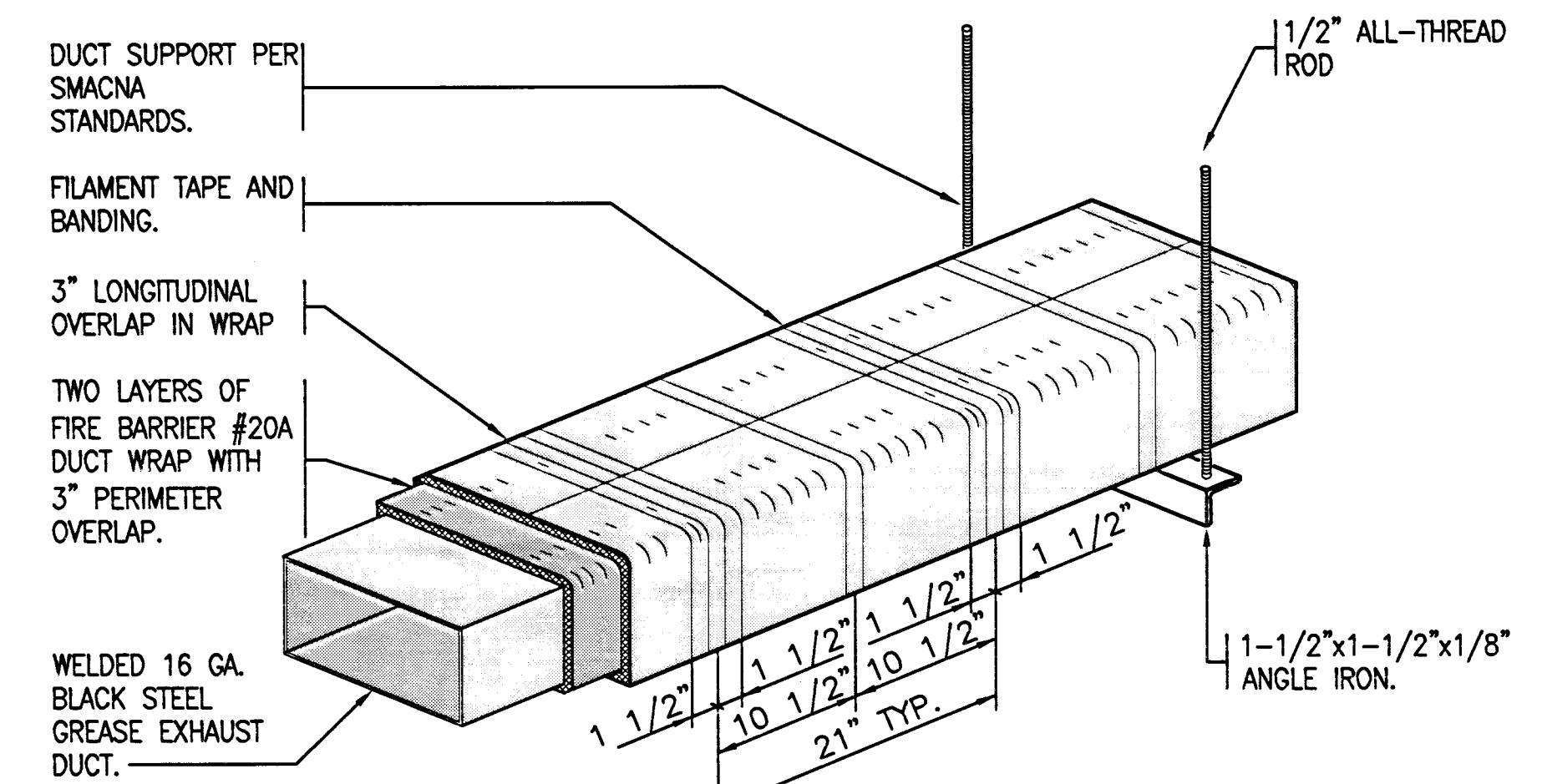
9 BOILER PIPING SCHEMATIC

W1.02 SCALE: NTS



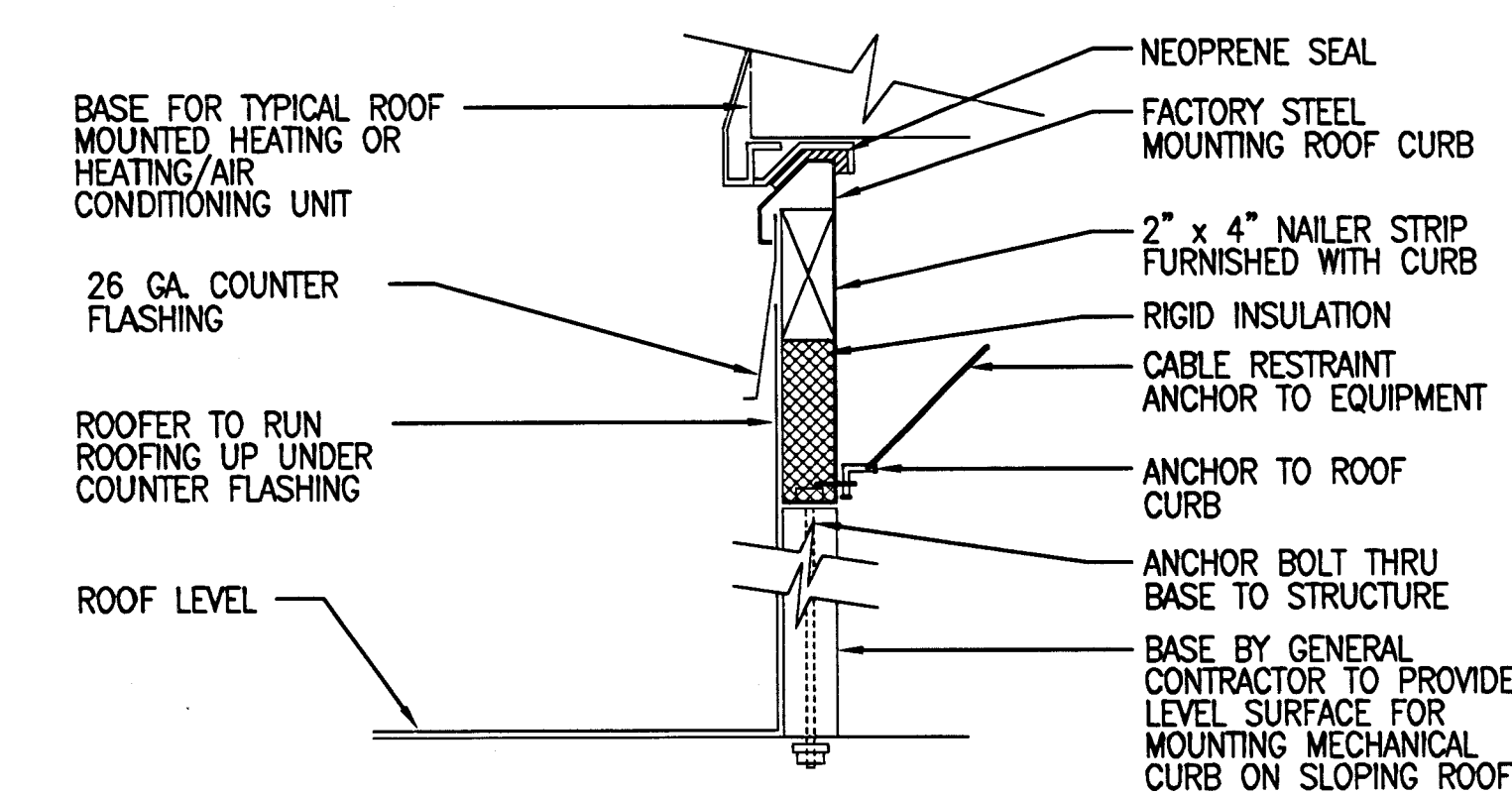
5 2-WAY AUTO-VALVE PIPING SCHEMATIC

W1.02 SCALE: NTS



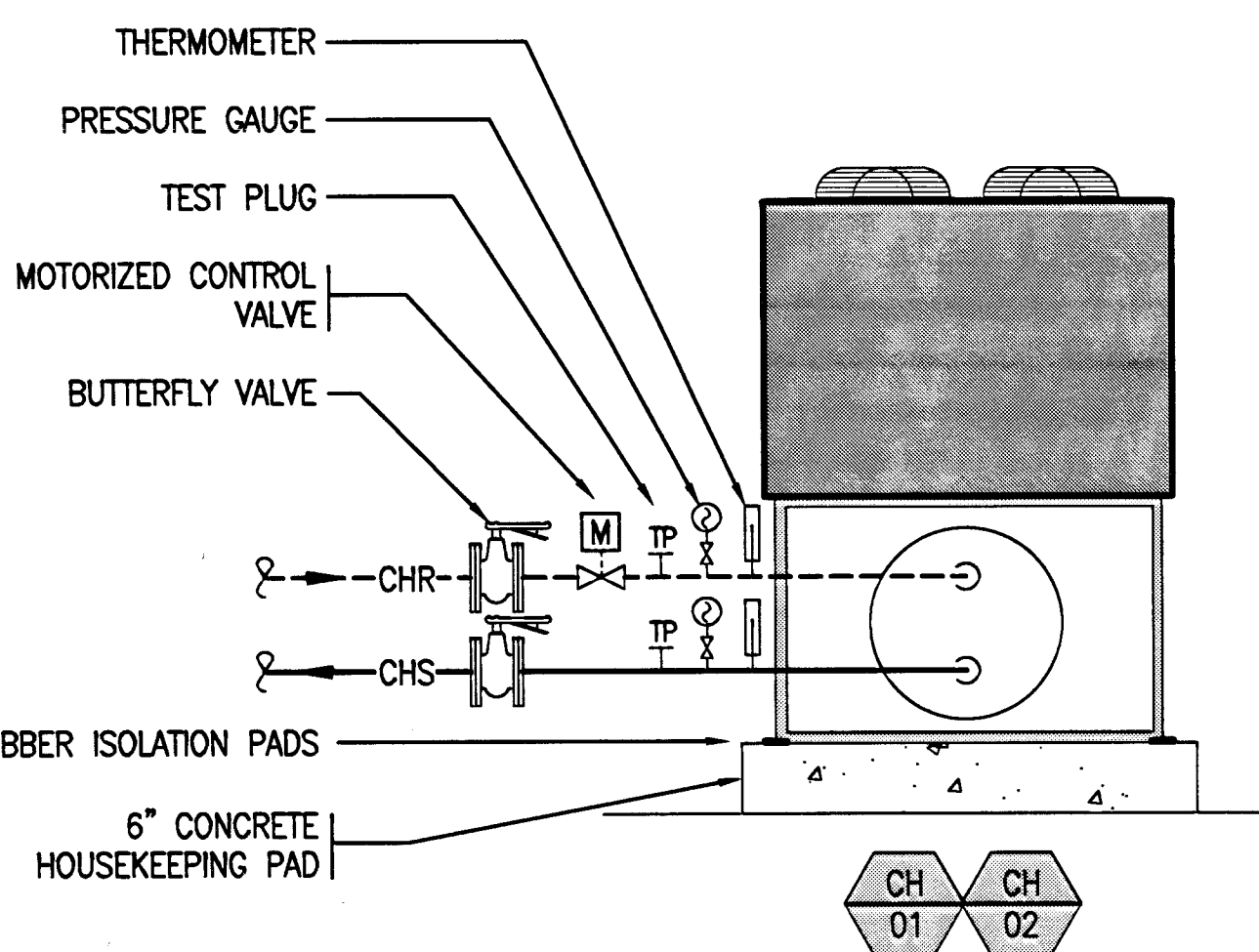
NOTES

1. FILAMENT TAPE USED ON BOTH LAYERS.
2. BANDING - 3/4" WIDE, 0.015" MIN EXTERIOR LAYER
3. CARBON STEEL - 1 HOUR REQUIREMENTS
4. 304 STAINLESS STEEL - 2 HOUR REQUIREMENTS SEE SECTION 3.1.3 OF THE INSTALLATION GUIDE FOR DETAILS.
5. STAGGER JOINTS 10-1/2" BETWEEN LAYERS
6. WRAP HANGER SUPPORT SYSTEM WITH ONE LAYER OF FIREMASTER DUCT WRAP. SEE FIGURE 8 AND SECTION 6.07 OF THE INSTALLATION GUIDE FOR DETAILS.
7. SECTION 6.07 OF THE INSTALLATION GUIDE FOR DETAILS.
8. 7 AND SECTION 6.01 OF THE INSTALLATION GUIDE FOR DETAILS.
9. SEE SECTION 6.01 THRU 6.10 OF THE INSTALLATION GUIDE FOR COMPLETE DETAILS.
10. REFER TO 3M FIREMASTER DUCT SYSTEM INSTALLATION INFORMATION FOR ADDITIONAL REQUIREMENTS. ALL DUCT CONSTRUCTION TO BE PER CHAPTER 5, 2000 UNIFORM MECHANICAL CODE.



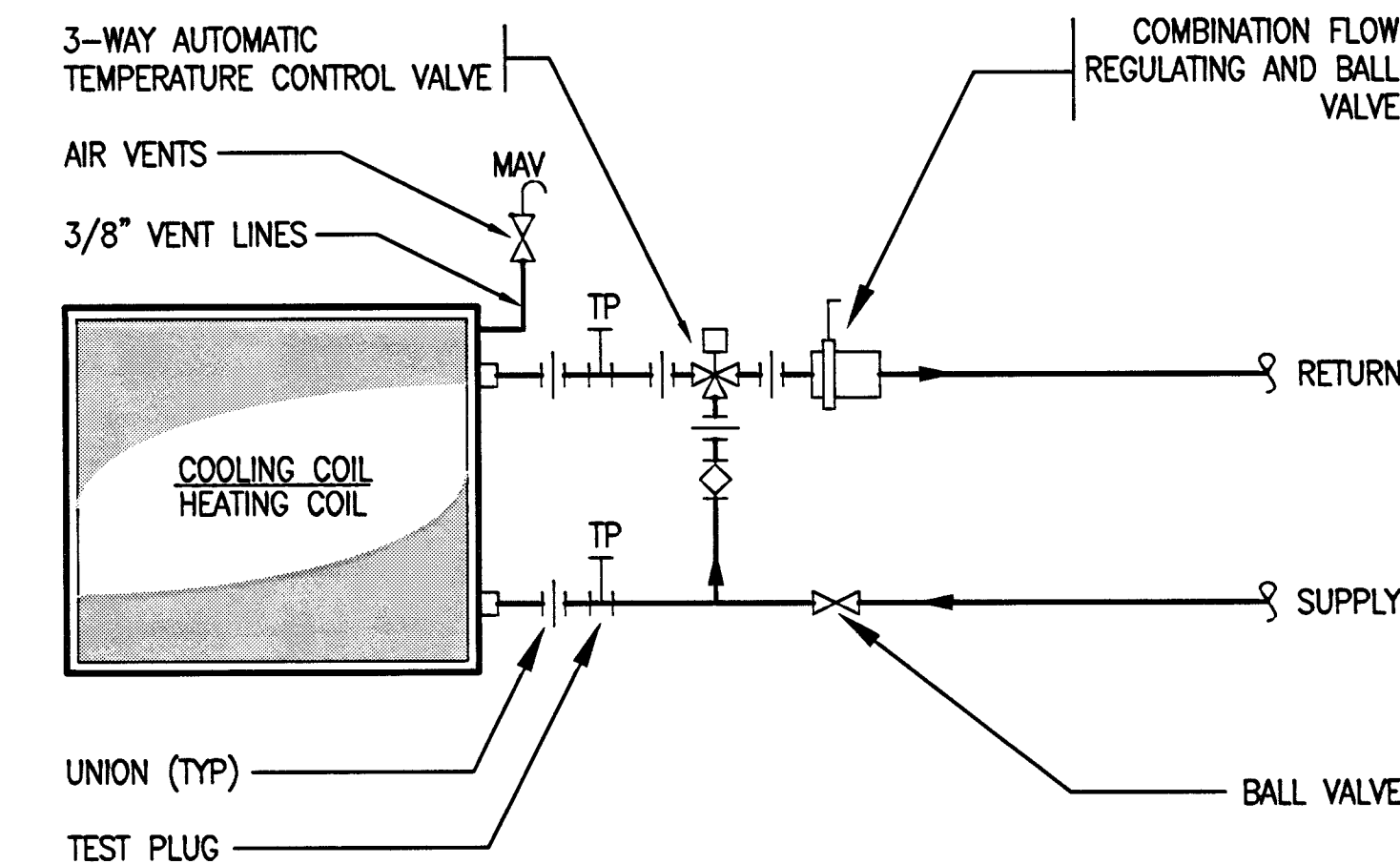
12 ROOF CURB SCHEMATIC

W1.02 SCALE: NTS



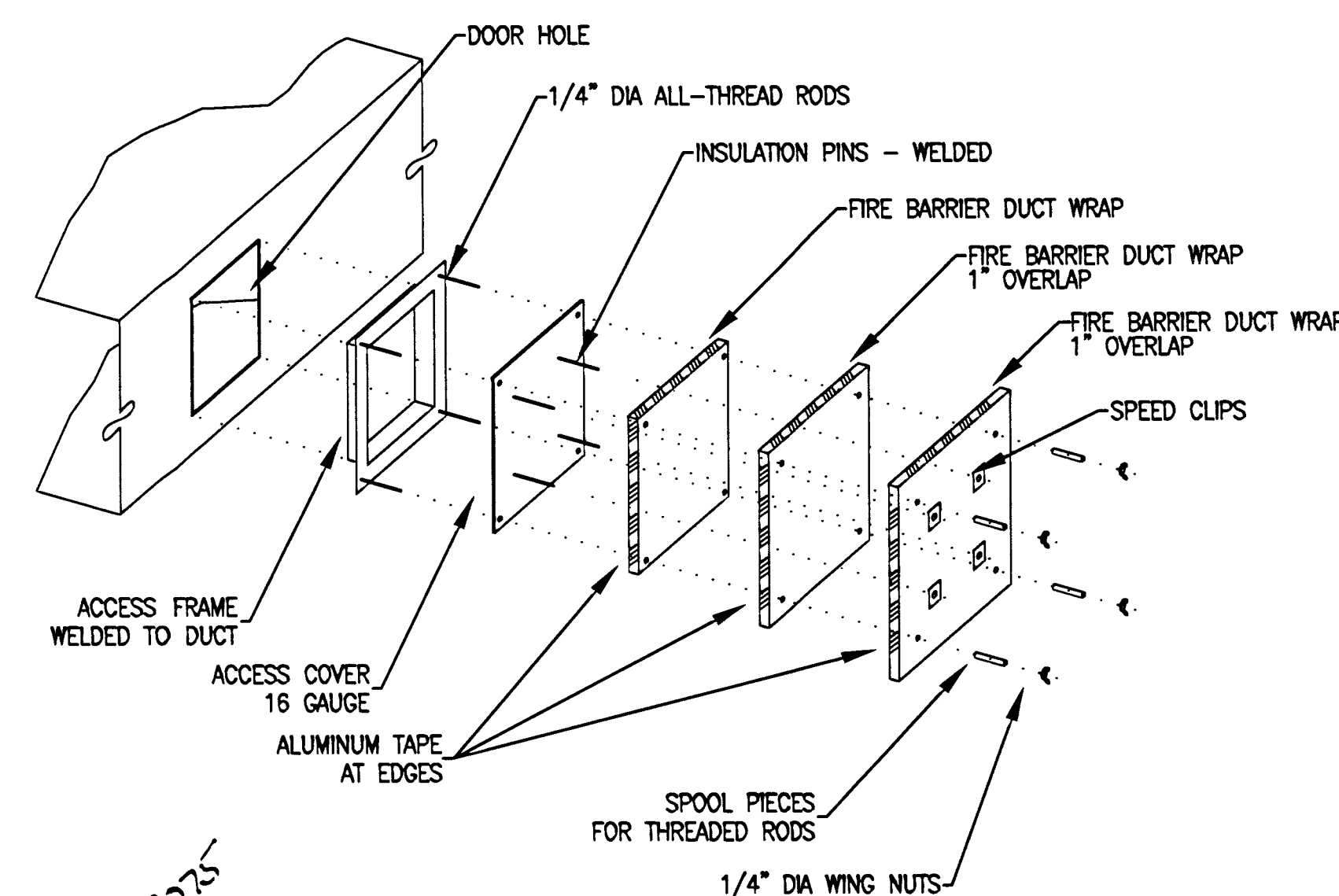
8 CHILLER PIPING SCHEMATIC

W1.02 SCALE: NTS



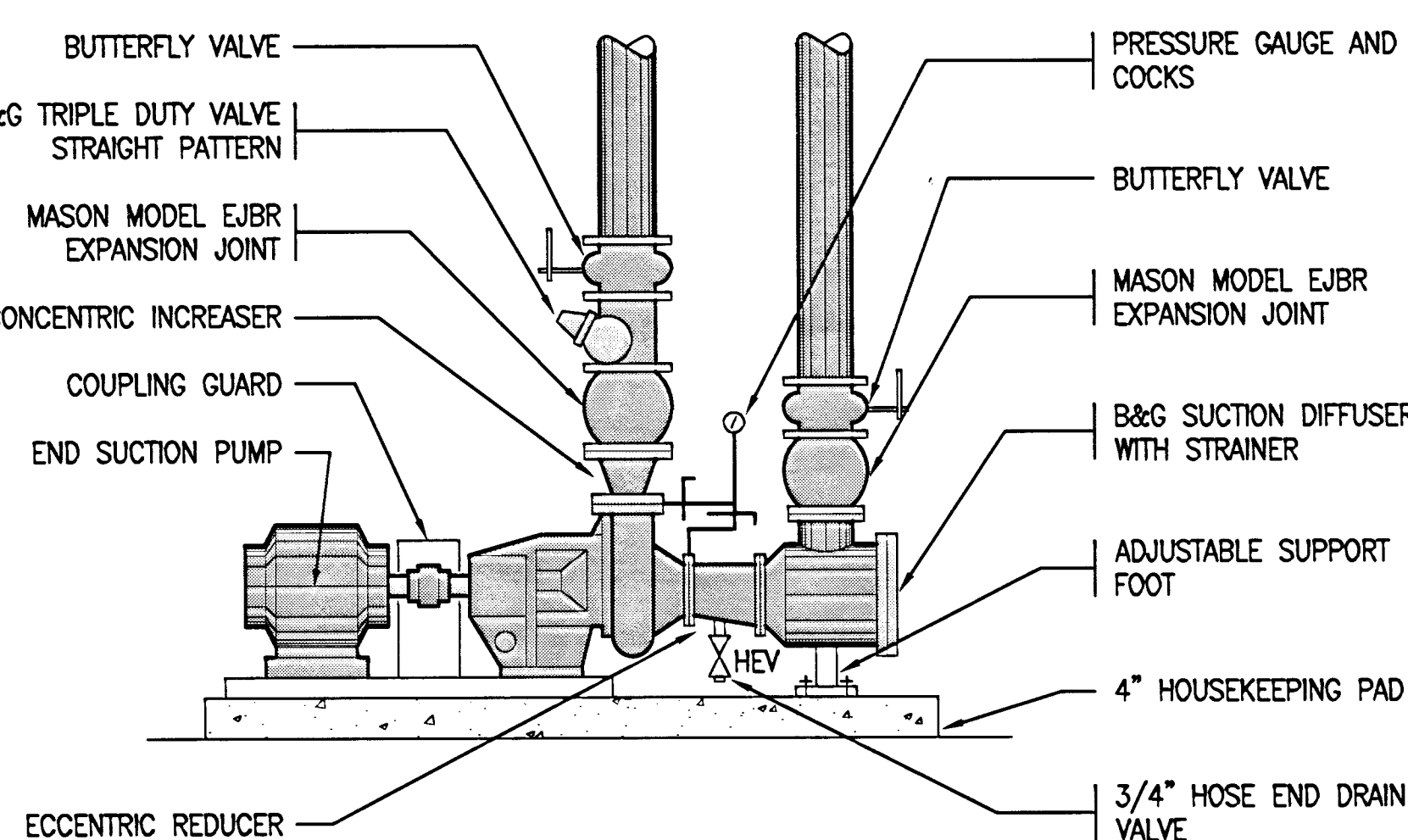
4 3-WAY AUTO-VALVE PIPING SCHEMATIC

W1.02 SCALE: NTS



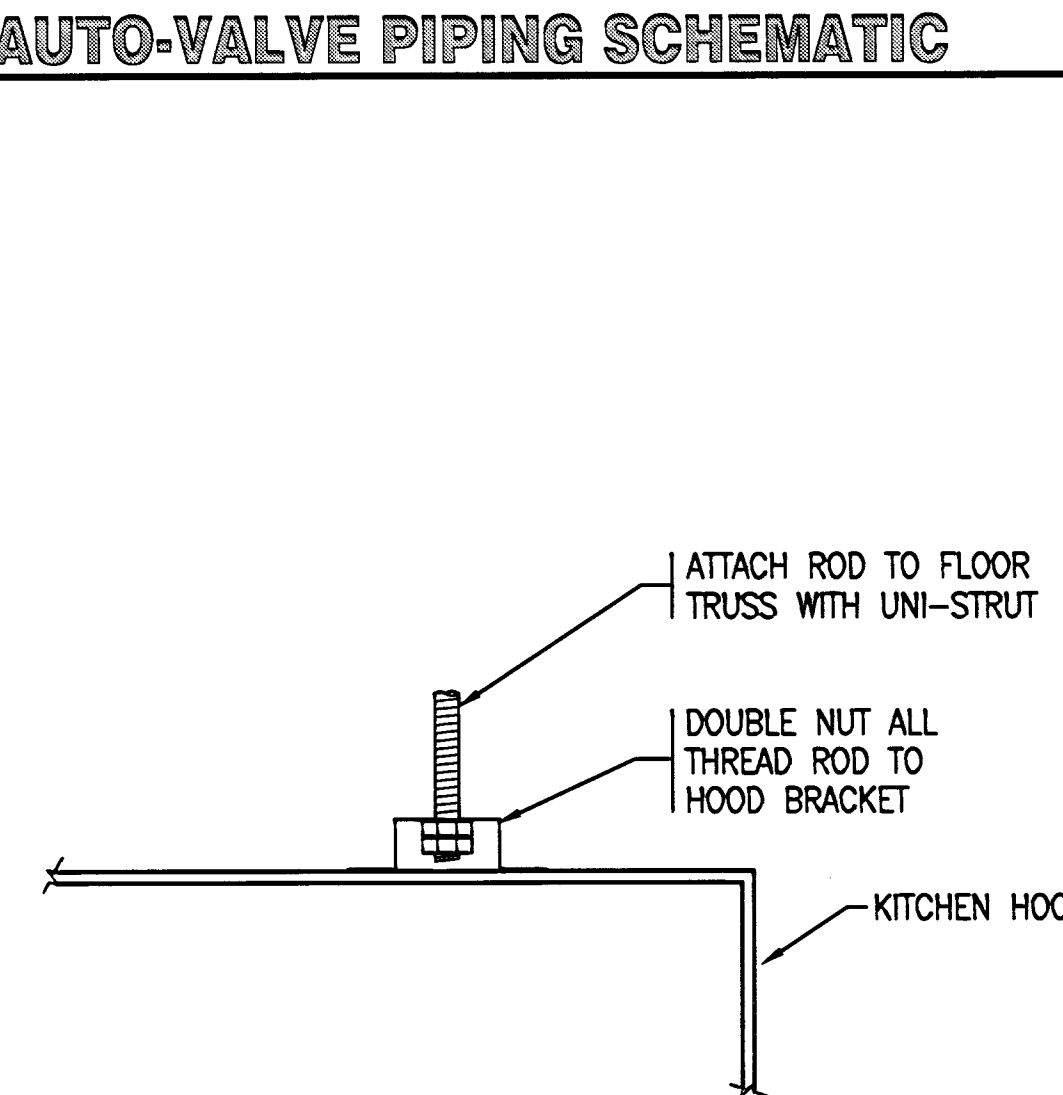
11 DUCT ENCLOSURE ACCESS DOOR

W1.02 SCALE: NTS



7 END SUCTION PUMP SCHEMATIC

W1.02 SCALE: NTS

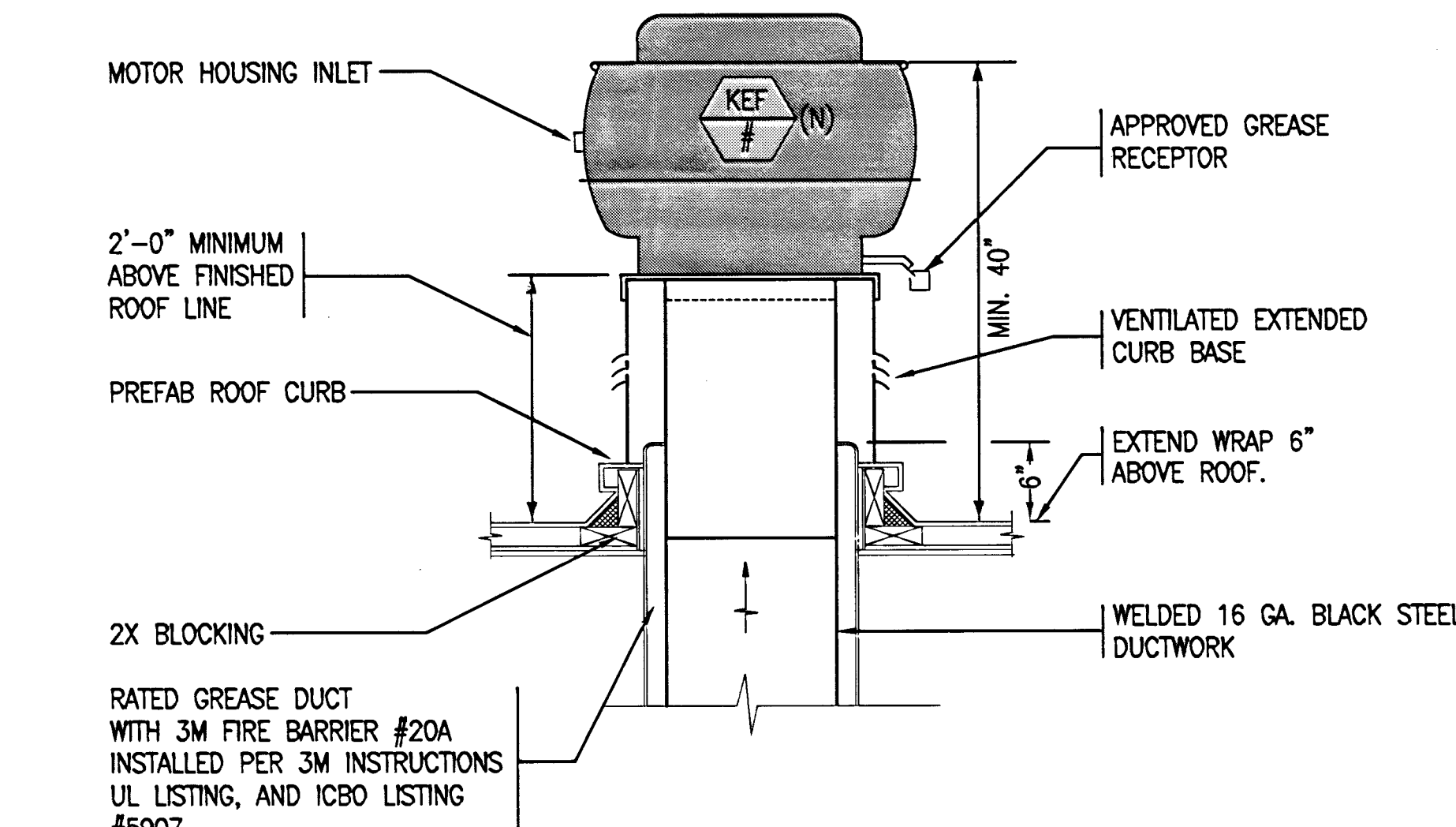


3 HOOD SUPPORT DIAGRAM

W1.02 SCALE: NTS

2 GREASE DUCT SYSTEM DIAGRAM

W1.02 SCALE: NTS



1 KITCHEN EXHAUST FAN DIAGRAM

W1.02 SCALE: NTS