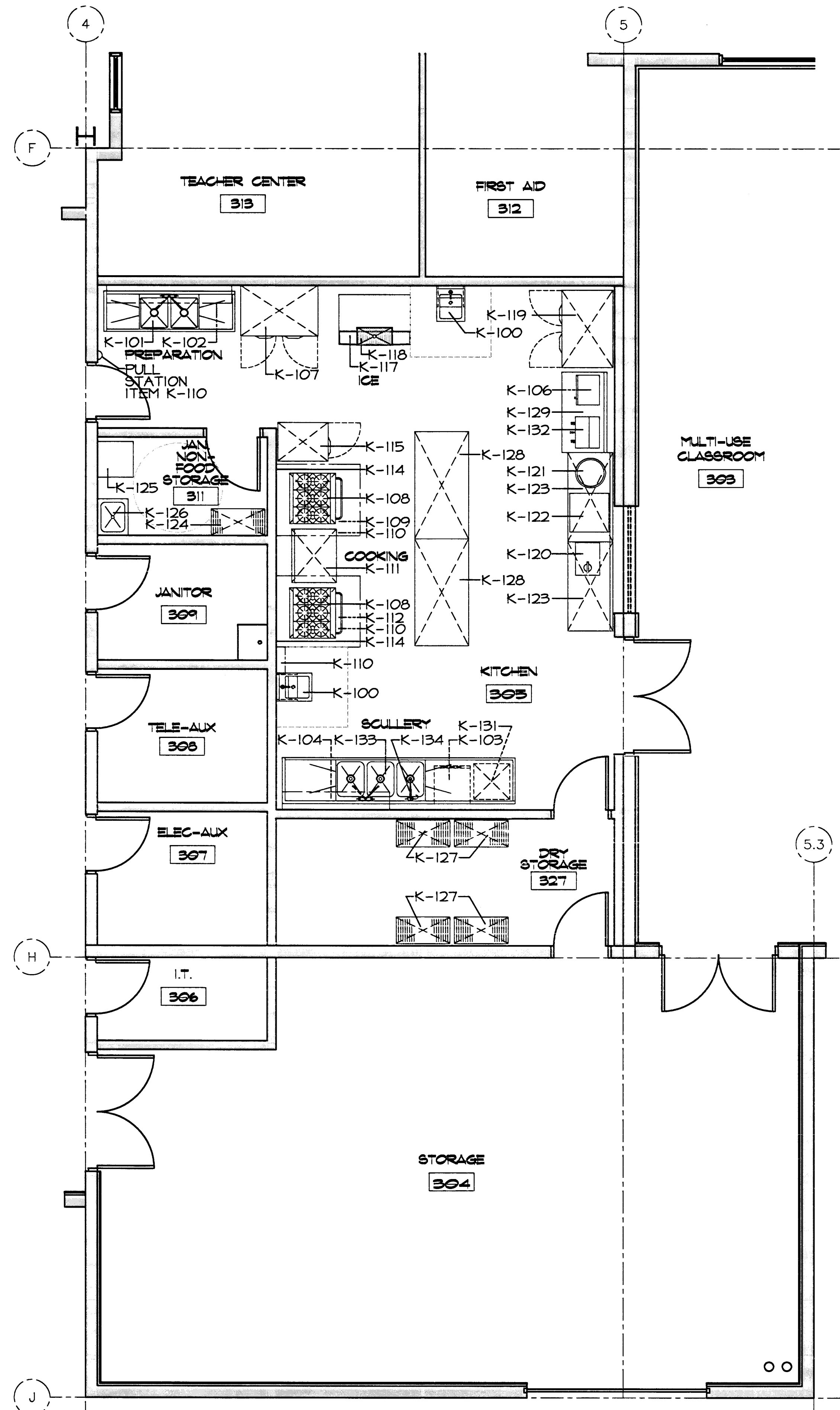


1 EQUIPMENT FLOOR PLAN - SENIOR CENTER
SCALE: 1/4"=1'-0"

EQUIPMENT SCHEDULE

ITEM	QUANTITY	DESCRIPTION	REMARKS
K-1	2	HAND SINK ASSEMBLY	
K-2	1	PREPARATION TABLE WITH SINKS	
K-3	1	WALL CABINET	
K-4	1	NON-FOOD SHELVING UNIT	NOT IN CONTRACT/BY OWNER
K-5	1	JANITOR SINK	
K-6	1	WASHER/DRYER	NOT IN CONTRACT/BY OWNER
K-7	2	WORK TABLE	
K-8	1	MICROWAVE OVEN SHELF	
K-9	1	MICROWAVE OVEN	NOT IN CONTRACT/BY OWNER
K-10	1	COFFEE BREWER	NOT IN CONTRACT/BY VENDOR
K-11	1	WORK COUNTER	
K-12	1	PRE-RINSE SPRAY	
K-13	1	SCULLERY SINK	
K-14	1	WALL CABINET	
K-15	1	UNDERCOUNTER DISHWASHER	
K-16	1	REFRIGERATOR	
K-17	1	SIX BURNER RANGE/GRIDDLE WITH CONVECTION OVEN BASE	
K-18	1	FREEZER	
K-19	1	EXHAUST VENTILATOR	
K-20	1	FIRE SUPPRESSION SYSTEM	
K-21	1 LOT	STAINLESS STEEL WALL PANELS	
K-22	1	REFRIGERATOR	
K-23	1	RANGE WITH OPEN BASE	
K-24	1	CHARBROILER/GRIDDLE WITH OPEN BASE	
K-25	1	EXHAUST VENTILATOR	
K-26	1	FIRE SUPPRESSION SYSTEM	
K-27	1	ICE MAKER WITH BIN	
K-28	1	FLOOR TROUGH WITH GRATING	
K-29	1	MOBILE DRAINBOARD	
K-30	5	SHELVING UNIT	NOT IN CONTRACT/BY OWNER
K-31	1	FOOD SHIELD	
K-100	2	HAND SINK ASSEMBLY	
K-101	1	PREPARATION TABLE WITH SINKS	
K-102	1	WALL CABINET	
K-103	1	UNDERCOUNTER DISHWASHER	
K-104	1	WALL CABINET	
K-105	1	NOT USED	
K-106	1	MICROWAVE OVEN	NOT IN CONTRACT/BY OWNER
K-107	1	REFRIGERATOR/FREEZER	
K-108	2	SIX BURNER RANGE WITH OVEN BASE	
K-109	1	EXHAUST VENTILATOR	
K-110	1	FIRE SUPPRESSION SYSTEM	
K-111	1	WORK TABLE	
K-112	1	EXHAUST VENTILATOR	
K-113	1	NOT USED	
K-114	1 LOT	STAINLESS STEEL WALL PANELS	
K-115	1	REFRIGERATOR	
K-116	1	NOT USED	
K-117	1	ICE MAKER WITH BIN	
K-118	1	FLOOR TROUGH	
K-119	1	REFRIGERATOR	
K-120	1	SNOW CONE MACHINE	NOT IN CONTRACT/BY VENDOR
K-121	1	COTTON CANDY MACHINE	NOT IN CONTRACT/BY VENDOR
K-122	1	POPCORN MAKER	NOT IN CONTRACT/BY VENDOR
K-123	2	WORK TABLE	NOT IN CONTRACT/BY VENDOR
K-124	1	NON-FOOD SHELVING UNIT	NOT IN CONTRACT/BY OWNER
K-125	1	WASHER/DRYER	NOT IN CONTRACT/BY OWNER
K-126	1	JANITOR SINK	
K-127	4	SHELVING UNIT	NOT IN CONTRACT/BY OWNER
K-128	2	WORK TABLE	NOT IN CONTRACT/BY VENDOR
K-129	1	WORK TABLE	NOT IN CONTRACT/BY VENDOR
K-130	1	NOT USED	
K-131	1	MOBILE DRAINBOARD	
K-132	1	COFFEE BREWER	NOT IN CONTRACT/BY VENDOR
K-133	1	SCULLERY SINK	
K-134	1	PRE-RINSE SPRAY	
K-135	1	NOT USED	
K-136	1	NOT USED	



2 EQUIPMENT FLOOR PLAN - RECREATION CENTER
SCALE: 1/4"=1'-0"

GENERAL NOTES:

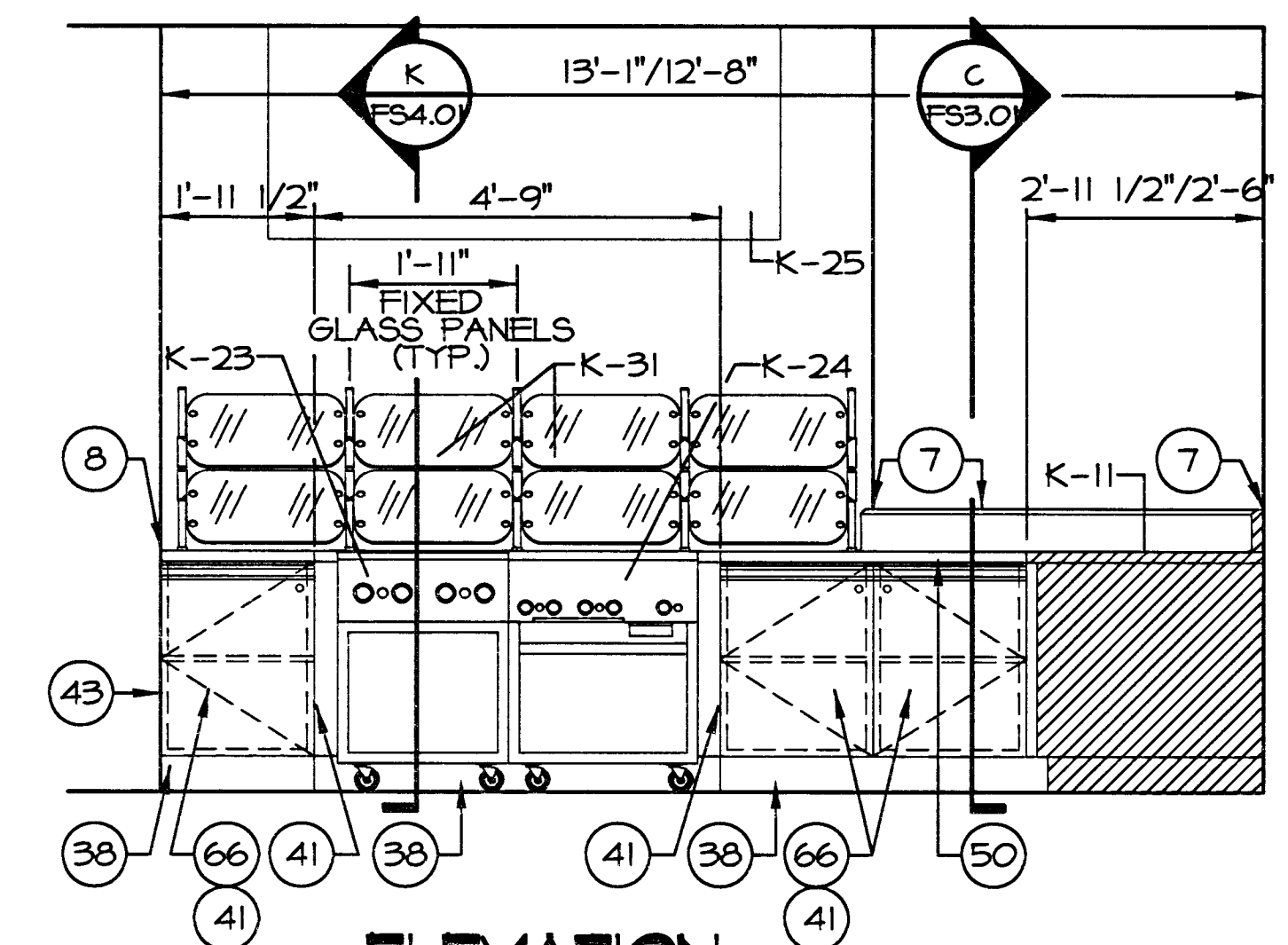
- EQUIPMENT SHALL BE FABRICATED IN ACCORDANCE WITH EXISTING STANDARDS OF THE NATIONAL SANITATION FOUNDATION, ANN ARBOR, MI.
- UTILITY OUTLET REQUIREMENTS SHOWN ON THESE DRAWINGS ARE INTENDED FOR SCHEMATIC USE AND ARE NOT TO BE USED FOR ROUGH-IN LOCATIONS. SEE ROUGH-IN DRAWINGS PREPARED BY FSEC.
- FSEC SHALL SUPPLY STARTERS, ON/OFF SWITCHES AND CONTROL DEVICES WITH ALL FOOD SERVICE EQUIPMENT AS SUGGESTED BY FOOD SERVICE EQUIPMENT MANUFACTURER OR REQUIRED BY CODE.
- PEDESTAL OUTLETS SHALL NOT BE MORE THAN 4" HIGH AND MUST BE CLEAR OF EQUIPMENT.

ABBREVIATIONS

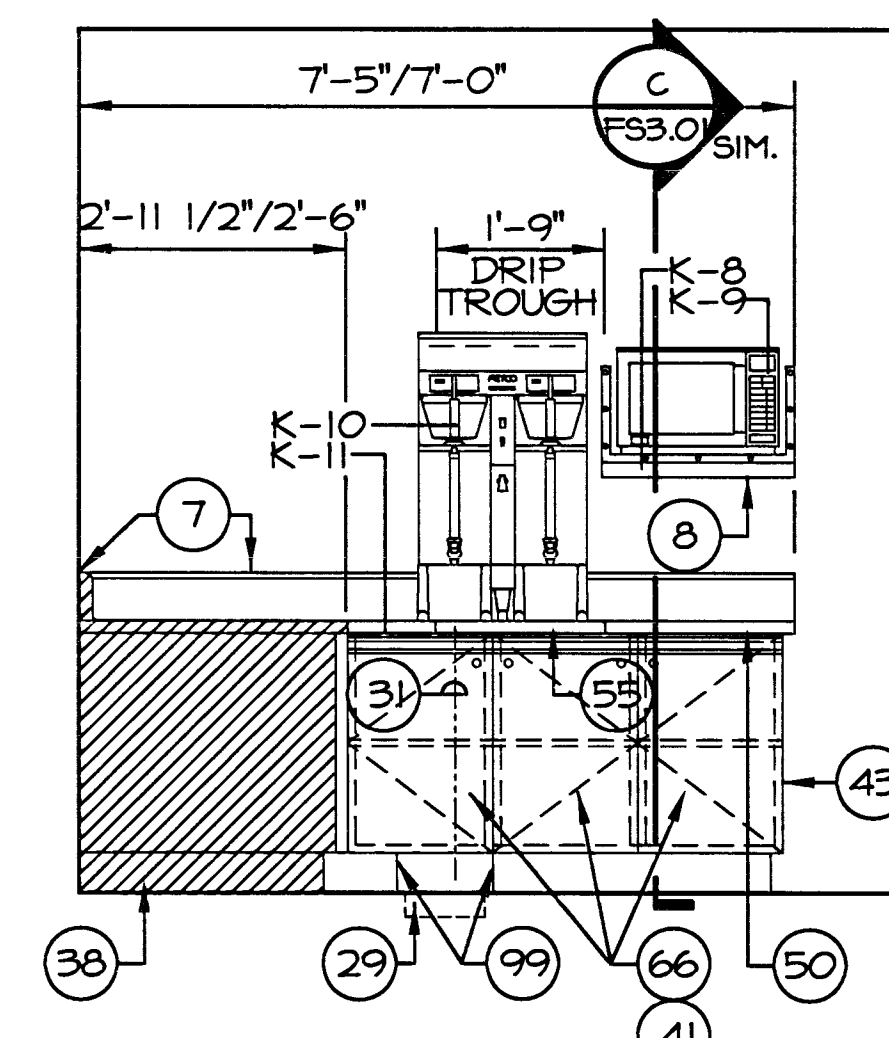
CONTRACTOR ABBREVIATIONS	
FSEC	FOOD SERVICE EQUIPMENT CONTRACTOR
AFF	ABOVE FINISHED FLOOR
NIC	NOT IN CONTRACT
S/S	STAINLESS STEEL
W/	WITH
(TYP)	TYPICAL CONDITION
GA	GAUGE (METAL)

REFERENCE NOTES

- SEAL BACKSPLASH TO WALL.
- SEAL TO WALL.
- FLOOR SINK.
- 1" INDIRECT WASTE TO FLOOR DRAIN.
- COVERED BASE FINISH (NOT INCLUDED IN FOOD SERVICE (11400) SEGMENT OF THE WORK) OVER GALV. METAL BASE BY FSEC.
- STAINLESS STEEL FINISH.
- STAINLESS STEEL END PANEL.
- STAINLESS STEEL TOP.
- 4" W. X 2" DP. S/S DRIP TROUGH WITH REMOVABLE PERFORATED S/S GRATING.
- DOOR WITH LOCK & INTEGRAL FULL.
- NOTCH BASE AT FLOOR SINK/DRAIN ENCLOSE OPENING.



4 ELEVATION
SCALE: 1/2"=1'-0"

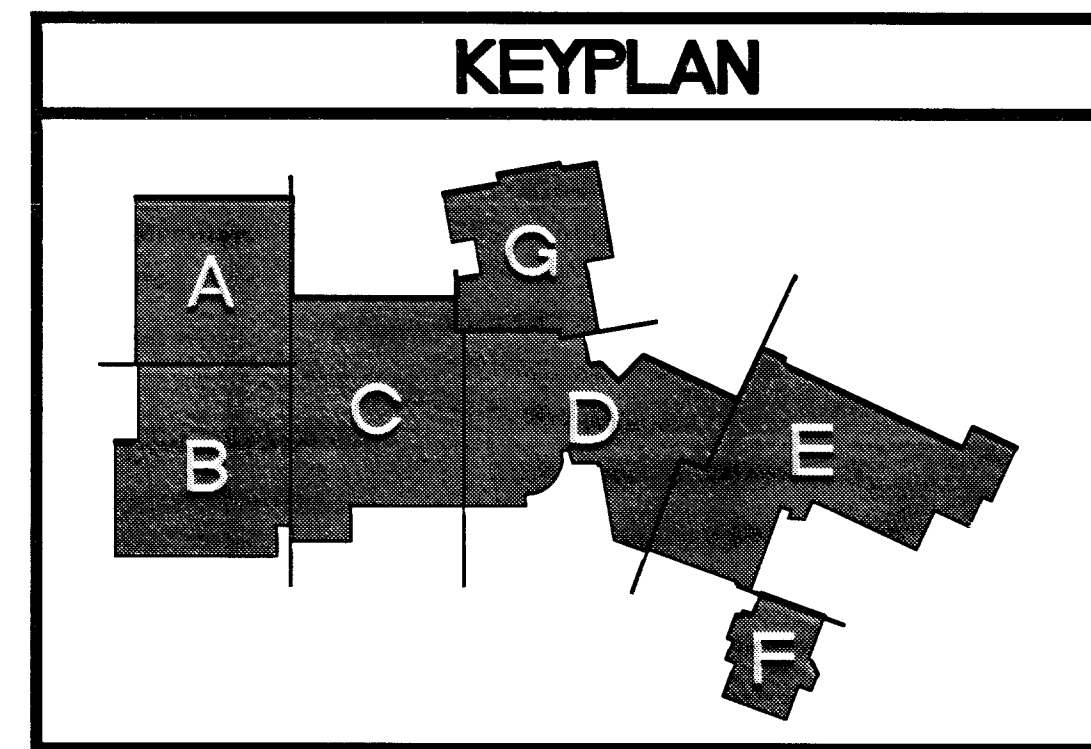


5 ELEVATION
SCALE: 1/2"=1'-0"

HDA PACIFIC
134 Church Street
P.O. Box 1718
Sonoma, CA 95476
USA
Phone: 707-933-0749
Fax: 707-933-0757

1000 Commerce Drive
Suite 1006
Carpools, PA 15108
USA
Phone: 412-299-9300
Fax: 412-299-9300

Food Facility Planning and Design
A Division of Hammer Design Associates, Inc.
© HDA-PACIFIC 2005



REVISIONS
RECORD DRAWINGS (REVISED)

CONSULTANT

500 PILOT ROAD, SUITE 18019
LAS VEGAS, NEVADA 89119
(702) 283-8111 FAX

LUCCHESE • GALATI

Disclaimer: These record drawings prepared by Lucchesse Galati Architects, Inc. and not-to-scale, are based on information provided by others. Lucchesse Galati Architects, Inc. and its employees are not responsible for any errors or omissions, which may be incorporated herein as a result.

CITY OF LAS VEGAS
CENTENNIAL HILLS COMMUNITY CENTER
RECORD DRAWINGS

OWNER: CITY OF LAS VEGAS
DEPARTMENT OF PUBLIC WORKS
ARCHITECTURAL SERVICES

400 EAST STEWART AVENUE
LAS VEGAS, NEVADA 89103
PHONE: (702) 229-6535
FAX: (702) 386-4846
TDD: (702) 386-9108

DATE: 03/18/05
SCALE:
REV NO: 05.15341.01
CITY NO: 671-49

FS2.01

JUL 10 2:53 PM '05
127.577