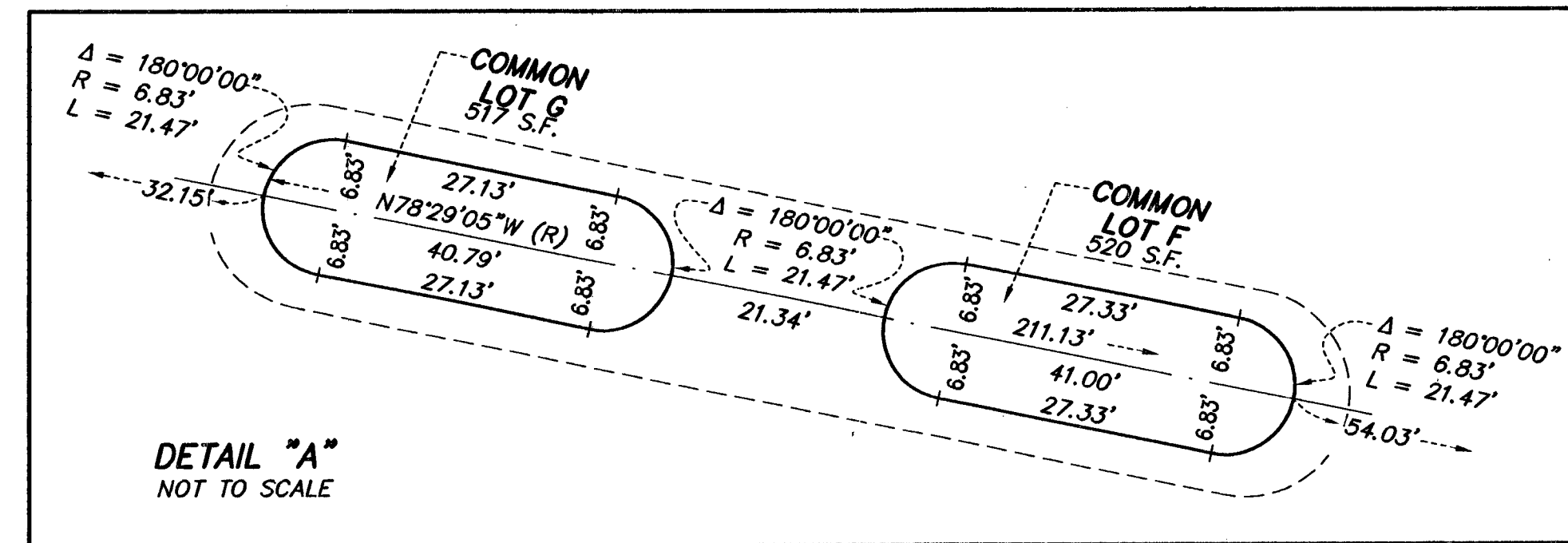


FINAL MAP OF SUMMERLIN VILLAGE 23A PARCEL L – ANDALUSIA A COMMON-INTEREST COMMUNITY

A MERGER AND RESUBDIVISION OF LOT 7, LOT 8 AND COMMON LOT "G" OF BLOCK B OF "SUMMERLIN VILLAGE 23A UNIT NO. 2" ON FILE IN BOOK 121, PAGE 12 OF PLATS IN THE CLARK COUNTY, NEVADA RECORDER'S OFFICE, LYING WITHIN SECTION 34, TOWNSHIP 20 SOUTH, RANGE 59 EAST, M.D.M., CITY OF LAS VEGAS, CLARK COUNTY, NEVADA

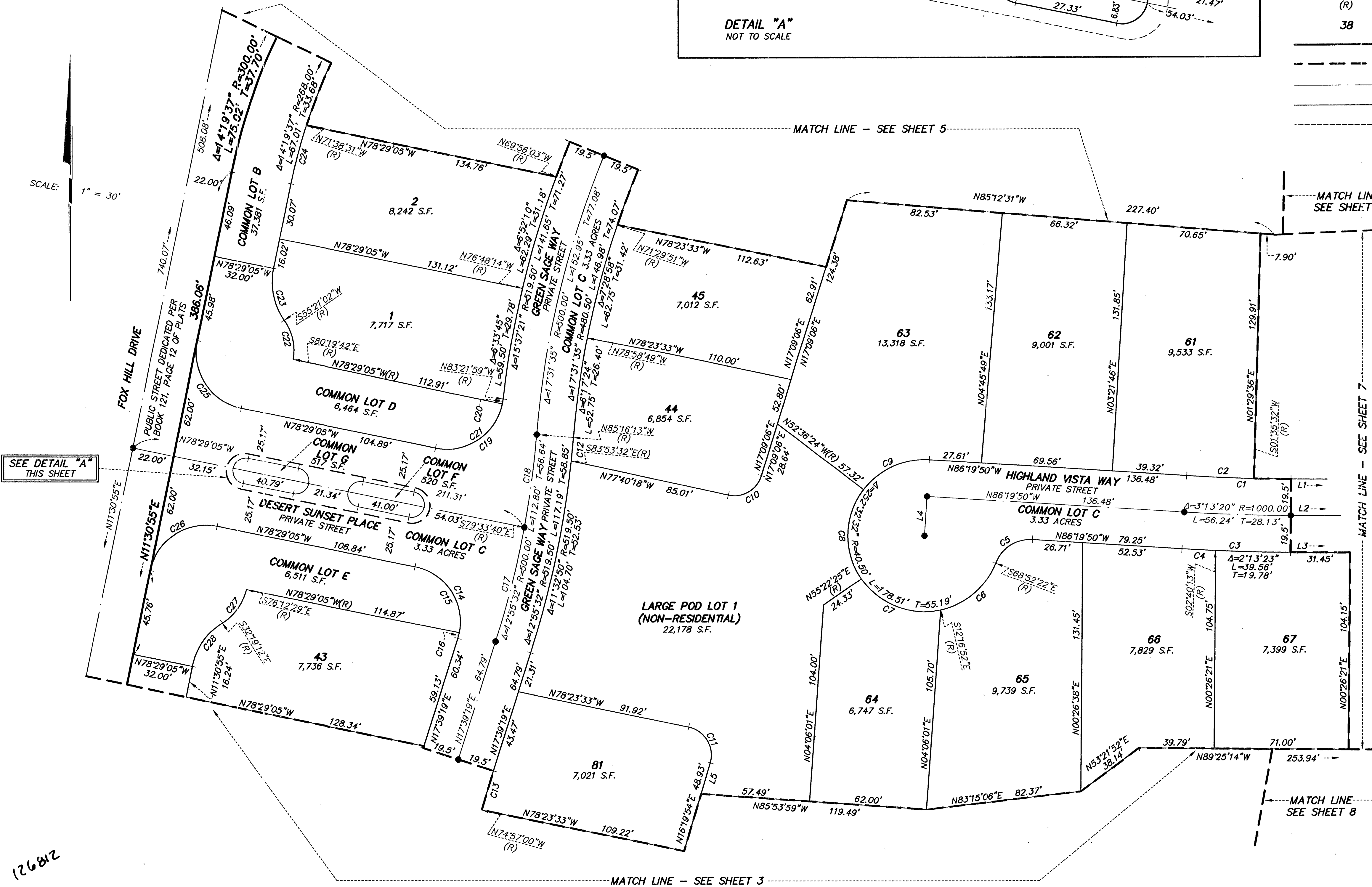
NOTES:

- 1) ALL STREETS SHOWN HEREON AS PRIVATE STREETS ARE ALSO A CITY OF LAS VEGAS PUBLIC SEWER EASEMENT, A PUBLIC UTILITY EASEMENT AND PUBLIC DRAINAGE EASEMENT TO BE PRIVATELY MAINTAINED BY THE HOMEOWNER'S ASSOCIATION.
- 2) REAR LOT CORNERS WILL BE SET WITH A REBAR AND ALUMINUM CAP STAMPED "PLS 17022" UNLESS A BLOCK WALL EXISTS, THEN A NAIL AND BRASS TAG STAMPED "PLS 17022" WILL BE SET IN THE BLOCK WALL TO DENOTE THE SIDE PROPERTY LINE. FRONT OR SIDE LOT CORNERS ADJOINING ROADWAYS WILL BE WITNESSED BY A SAWCUT IN THE TOP OF CURB ON THE PROLONGATION OF THE PROPERTY LINE.
- 3) DIRECT VEHICULAR ACCESS TO PASEO BREEZE DRIVE AND FOX HILL DRIVE THROUGH COMMON LOTS FROM ADJUTING LOTS IS PROHIBITED.
- 4) FOR SIGHT VISIBILITY RESTRICTION ZONE (SVRZ) LOCATIONS AND DETAILS, REFER TO LATEST APPROVED CONSTRUCTION IMPROVEMENT PLANS.



LEGEND

- MONUMENT NOT FOUND
LOCATION PER BOOK 121, PAGE 12 OF PLATS (UNLESS OTHERWISE NOTED)
- SET TYPE III MONUMENT STAMPED "PLS 17022" WITH TYPE IV-A MONUMENTS SET IN TOP OF CURB (UNLESS OTHERWISE NOTED)
- C1 CURVE NUMBER
- L1 LINE SEGMENT NUMBER
- (R) RADIAL LINE OR BEARING
- 38 LOT NUMBER
- BOUNDARY LINE
- - - MATCH LINE
- CENTERLINE
- - - LOT LINE
- - - EASEMENT LINE



CURVE TABLE				
CURVE	DELTA	RADIUS	LENGTH	TANGENT
C1	3°13'20"	980.50'	55.14'	27.58'
C2	2°04'38"	980.50'	35.55'	17.78'
C3	3°13'20"	1019.50'	57.34'	28.68'
C4	0°59'57"	1019.50'	17.78'	8.89'
C5	72°32'32"	19.50'	24.69'	14.31'
C6	56°35'31"	40.50'	40.00'	21.80'
C7	67°39'16"	40.50'	47.82'	27.14'
C8	72°01'11"	40.50'	50.91'	29.44'
C9	56°16'34"	40.50'	39.78'	21.66'
C10	85°10'36"	15.00'	22.30'	13.79'
C11	94°43'27"	15.00'	24.80'	16.29'
C12	1°22'41"	519.50'	12.50'	6.25'
C13	2°36'19"	480.50'	21.85'	10.93'
C14	96°08'24"	30.00'	50.34'	33.40'
C15	90°00'00"	30.00'	47.12'	30.00'
C16	6°08'24"	30.00'	3.21'	1.61'
C17	71°25'59"	500.00'	62.97'	31.53'
C18	5°42'33"	500.00'	49.82'	24.93'
C19	94°52'54"	30.00'	49.68'	32.67'
C20	4°52'54"	30.00'	2.56'	1.28'
C21	90°00'00"	30.00'	47.12'	30.00'
C22	44°19'16"	29.20'	22.59'	11.89'
C23	46°09'53"	35.85'	28.89'	15.28'
C24	6°50'34"	268.00'	32.01'	16.02'
C25	90°00'00"	30.00'	47.12'	30.00'
C26	90°00'00"	30.00'	47.12'	30.00'
C27	43°53'17"	29.20'	22.37'	11.78'
C28	46°09'53"	35.85'	28.89'	15.28'

LINE TABLE		
LINE	BEARING	LENGTH
L1	N89°33'10"W	229.85'
L2	N89°33'10"W	229.85'
L3	N89°33'10"W	229.85'
L4	N03°40'10"E	21.00'
L5	N16°19'54"E	17.11'



4975
SHEET 4 OF 8

62023.921