

FINAL MAP OF SUMMERLIN VILLAGE 23A PARCEL L – ANDALUSIA

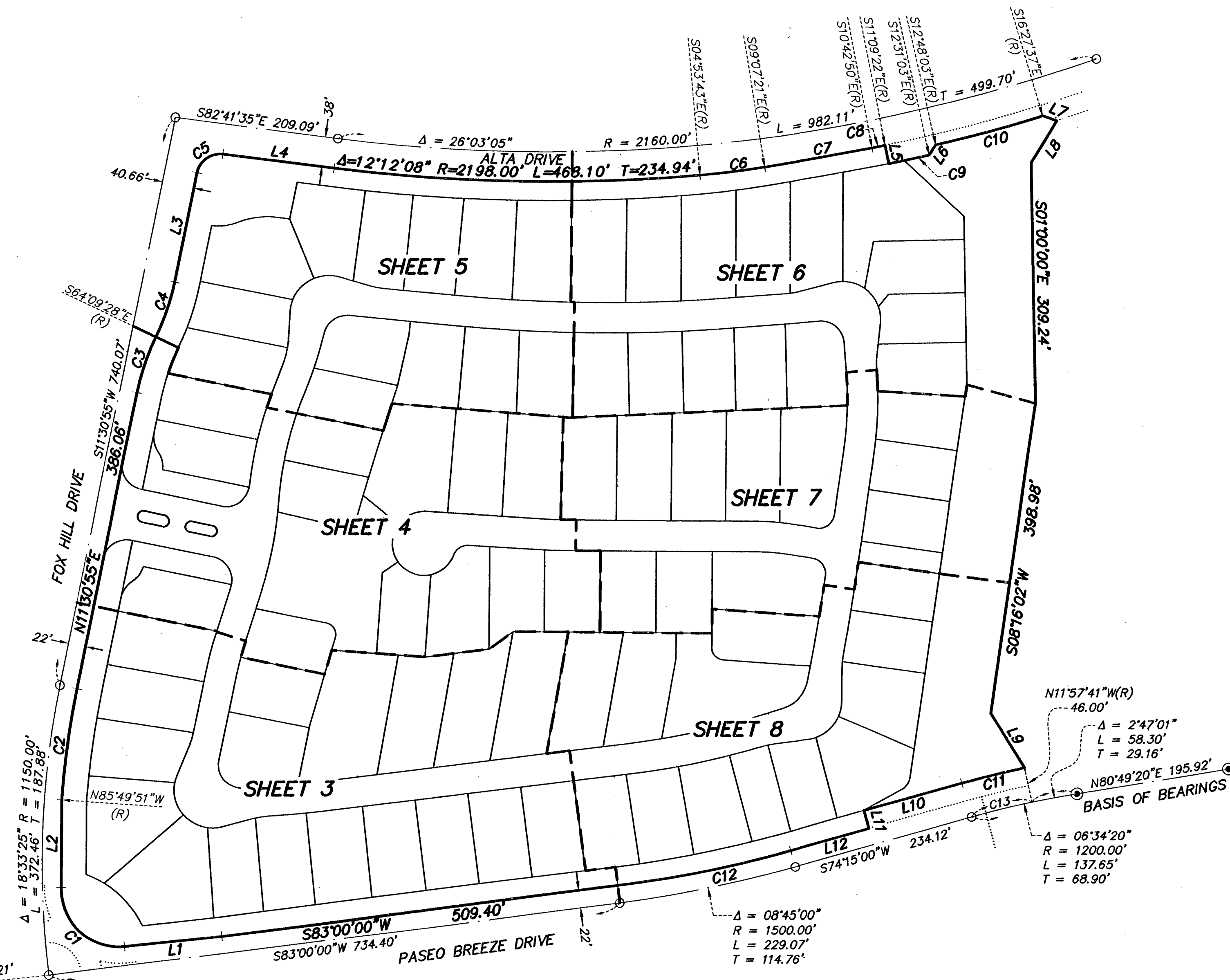
A COMMON-INTEREST COMMUNITY

A MERGER AND RESUBDIVISION OF LOT 7, LOT 8 AND COMMON LOT "G" OF BLOCK B OF "SUMMERLIN VILLAGE 23A UNIT NO. 2" ON FILE IN BOOK 121, PAGE 12 OF PLATS IN THE CLARK COUNTY, NEVADA RECORDER'S OFFICE, LYING WITHIN SECTION 34, TOWNSHIP 20 SOUTH, RANGE 59 EAST, M.D.M., CITY OF LAS VEGAS, CLARK COUNTY, NEVADA

FOUND MAG NAIL IN GRADED AREA. DID NOT ACCEPT POSITION RE-ESTABLISHED PER FILE 91, PAGE 28 OF PARCEL MAPS. SET 3 1/2" BRASS DISC IN CONCRETE STAMPED "PLS 17022"

SECTION CORNER 28 | 27
33 | 34

SECTION CORNER 33 | 34
3
BLM BRASS CAP STAMPED 1987



SCALE: 1" = 100'

SHEET INDEX

LINE	BEARING	LENGTH
L1	S84°02'30"W	124.88'
L2	N00°22'00"E	113.37'
L3	N11°30'55"E	142.56'
L4	S82°41'35"E	143.25'
L5	N11°09'22"W	24.00'
L6	S32°11'57"W	15.52'
L7	S71°16'23"E	18.99'
L8	S31°45'00"W	62.09'
L9	S31°37'53"E	82.13'
L10	S74°15'00"W	130.00'
L11	S15°45'00"E	24.00'
L12	S74°15'00"W	104.12'

CURVE	DELTA	RADIUS	LENGTH	TANGENT
C1	96°19'31"	73.25'	123.15'	81.82'
C2	7°20'46"	1128.00'	144.63'	72.41'
C3	14°19'37"	300.00'	75.02'	37.70'
C4	14°19'37"	300.00'	75.02'	37.70'
C5	85°47'30"	30.00'	44.92'	27.87'
C6	41°3'38"	1129.67'	83.35'	41.69'
C7	1°35'29"	5029.67'	139.70'	69.85'
C8	0°26'32"	2194.00'	16.94'	8.47'
C9	1°21'41"	2218.00'	52.70'	26.35'
C10	3°39'34"	2207.00'	140.96'	70.50'
C11	3°47'19"	1246.00'	82.39'	41.21'
C12	8°45'00"	1478.00'	225.71'	113.08'
C13	3°47'19"	1200.00'	79.35'	39.69'

LOT TABULATION

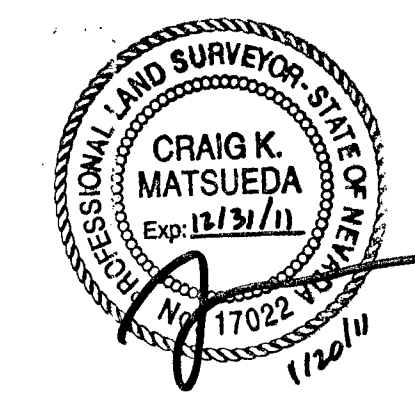
TOTAL RESIDENTIAL LOTS = 81
 TOTAL COMMON LOTS = 9
 TOTAL LARGE POD LOTS (NON-RESIDENTIAL) = 2

REFERENCE MAPS:

PARCEL MAP FILE 91, PAGE 28
 FINAL MAP BOOK 121, PAGE 12

LEGEND

- ⊙ FOUND 1 1/2" ALUMINUM CAP STAMPED "R. MROWCKI PLS 11441" UNLESS NOTED OTHERWISE
- LOCATION OF MONUMENT SET PER BOOK 121, PAGE 12 OF PLATS
- BOUNDARY LINE
- - - MATCH LINE
- CENTERLINE
- EXISTING PARCEL/LOT LINE



4975
SHEET 2 OF 8

126810
62023.981