

- LEGEND :**
- — — — — Street Centerline
  - — — — — Right-of-Way Line
  - — — — — Subdivision Line
  - — — — — Lot Line
  - — — — — Matchline
  - — — — — Parcel Line

**NOTE :**

"This Right-of-Way Study is for internal use only by the City of Las Vegas and does not represent a survey. This map is provided as a convenience and is not intended for the purpose of subdividing land not in conformance with the Nevada Revised Statutes. This is a graphical representation of Right-of-Way and associated documents and is for reference purposes only. All information should be independently verified by the design professional."

REVISIONS	DESCRIPTION	NO.	DATE	APP'D

DEPARTMENT OF OPERATION AND MAINTENANCE

RIGHT-OF-WAY SECTION

RIGHT-OF-WAY MANAGER: NANCY J. ALMANZAN PLS  
 PROJECT MANAGER: JEREMY LEAVITT, P.E.

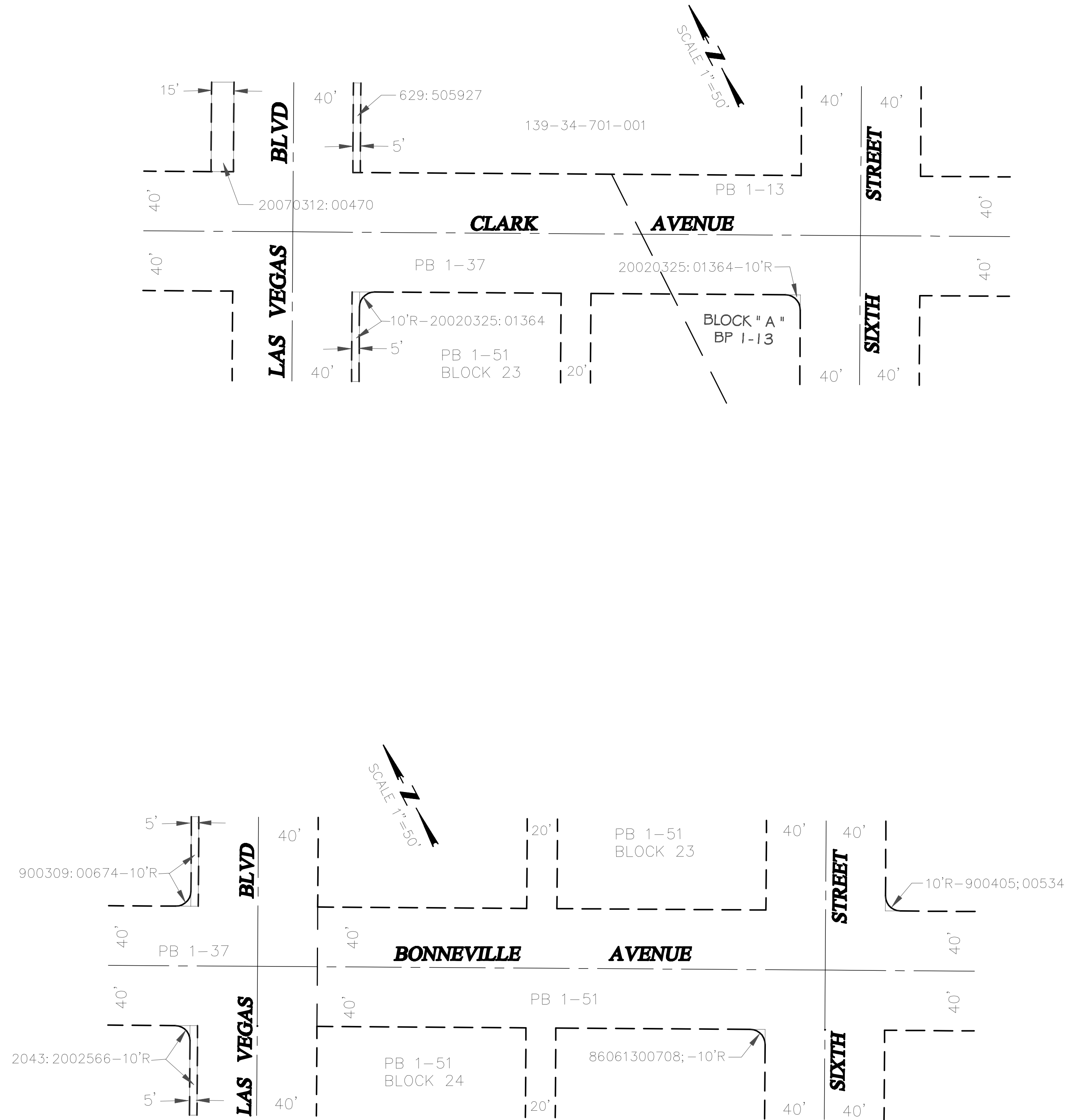
RESEARCHED BY: BYU  
 DRAWN BY: BYU  
 CHECKED BY: NUA

DATE: JULY 2011

RIGHT-OF-WAY STUDY FOR  
 ELECTRIC BIKES PROGRAM STREET IMPROVEMENT  
 BRIDGER AVENUE FROM THIRD STREET TO SIXTH STREET  
 THIRD STREET FROM BONNEVILLE AVENUE TO BRIDGER AVENUE

TITLE: SHEET: 1 of 2





**LEGEND :**

- — — — — Street Centerline
- - - - - Right-of-Way Line
- — — — — Subdivision Line
- - - - - Lot line
- — — — — Matchline
- — — — — Parcel Line

**NOTE :**

"This Right-of-Way Study is for internal use only by the City of Las Vegas and does not represent a survey. This map is provided as a convenience and is not intended for the purpose of subdividing land not in conformance with the Nevada Revised Statutes. This is a graphical representation of Right-of-Way and associated documents and is for reference purposes only. All information should be independently verified by the design professional."

NO.	DATE:	REVISIONS DESCRIPTION	APP'D

**DEPARTMENT OF OPERATION AND MAINTENANCE**

**RIGHT-OF-WAY SECTION**  
 RIGHT-OF-WAY MANAGER: NANCY J. ALMANZAN PLS  
 PROJECT MANAGER: JEREMY LEAVITT, P.E.  
 RESEARCHED BY: BYU DRAWING NO.  
 DRAWN BY: BYU  
 CHECKED BY: INJA DATE: JULY 2011



**TITLE:** RIGHT-OF-WAY STUDY FOR  
**SHEET:** ELECTRIC BIKES PROGRAM STREET IMPROVEMENT  
 CLARK AVENUE AND BONNEVILLE AVENUE  
 LAS VEGAS BOULEVARD TO SIXTH STREET