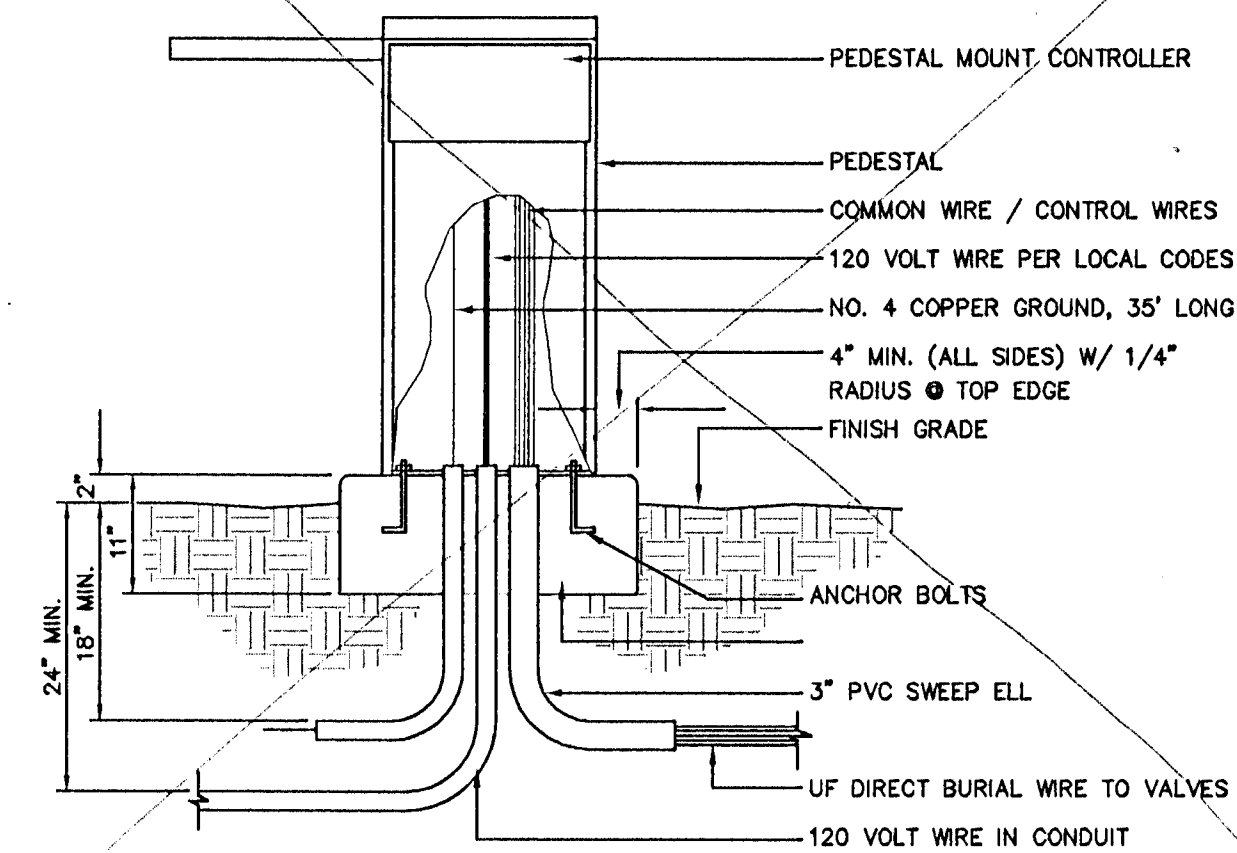


NOTE:
INSTALL CONTROLLER PER
MFG. PRINTED INSTRUCTIONS
& PER LOCAL CODES.
EXACT LOCATION TO APPROVED
IN THE FIELD BY OWNER'S
REPRESENTATIVE.

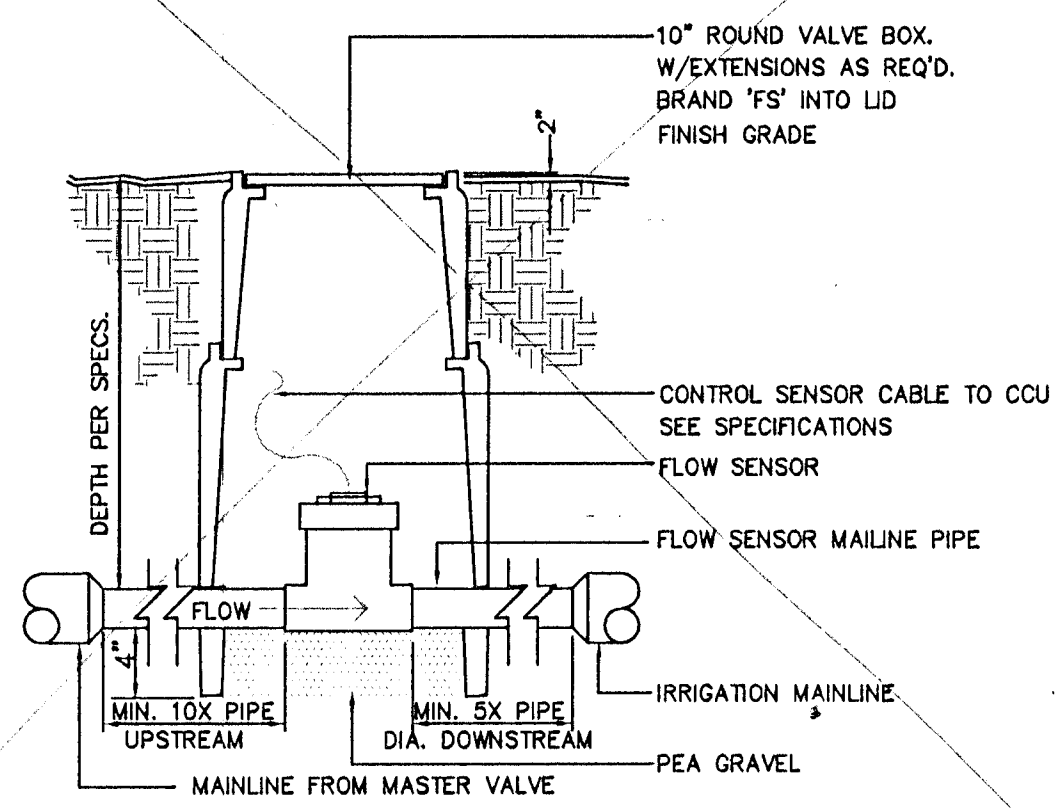


A IRRIGATION CONTROLLER
DETAIL NTS

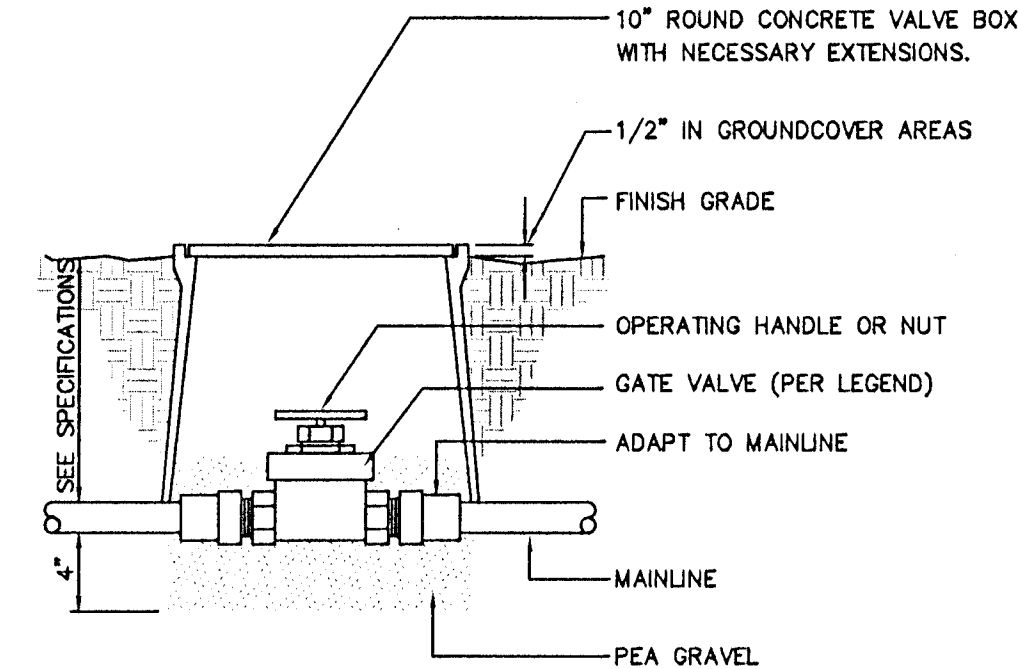
TAND, INC.
AS-BUILT

DATE 11-14-11
DANIEL MEYER

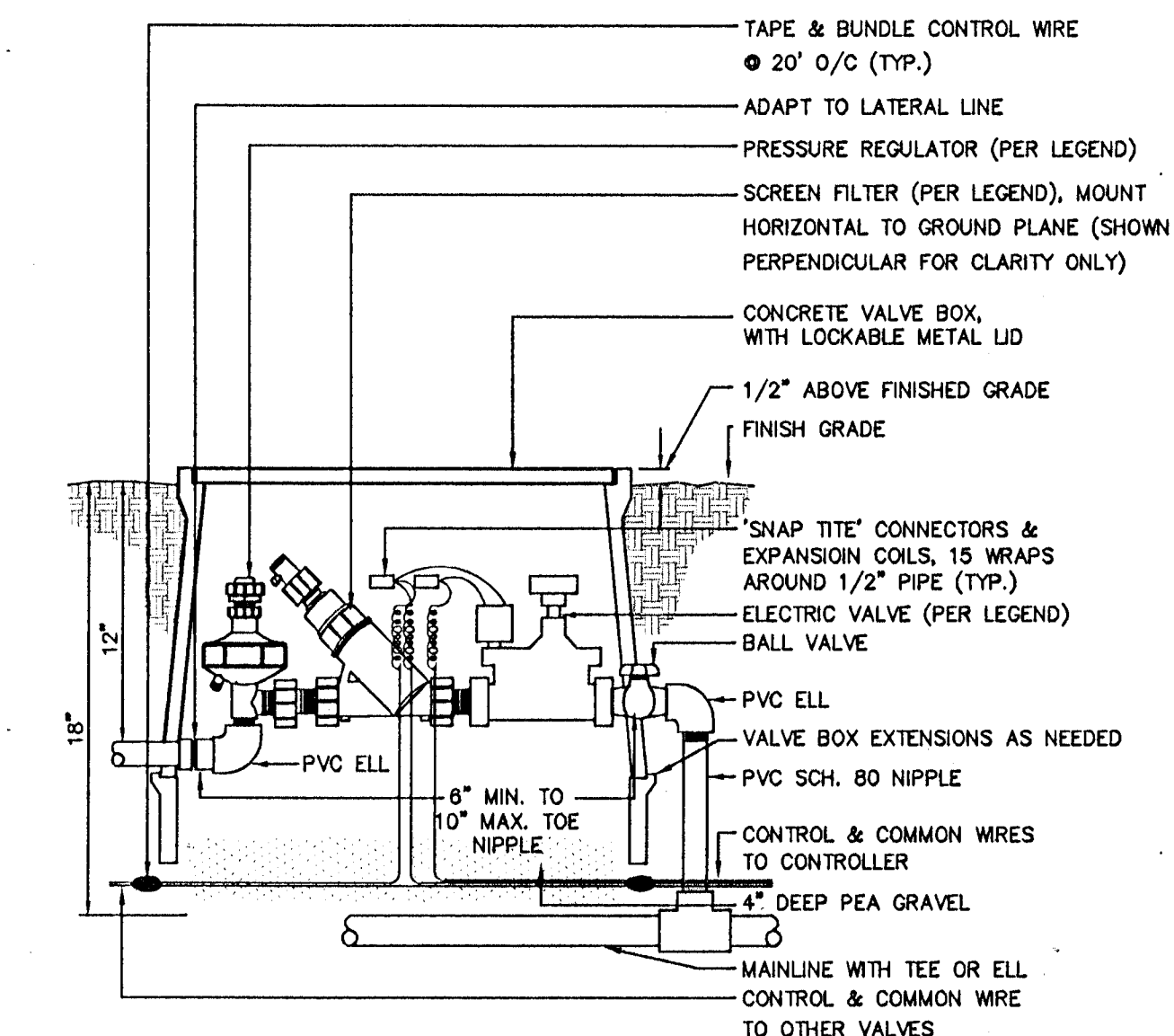
B NOT USED
DETAIL NTS



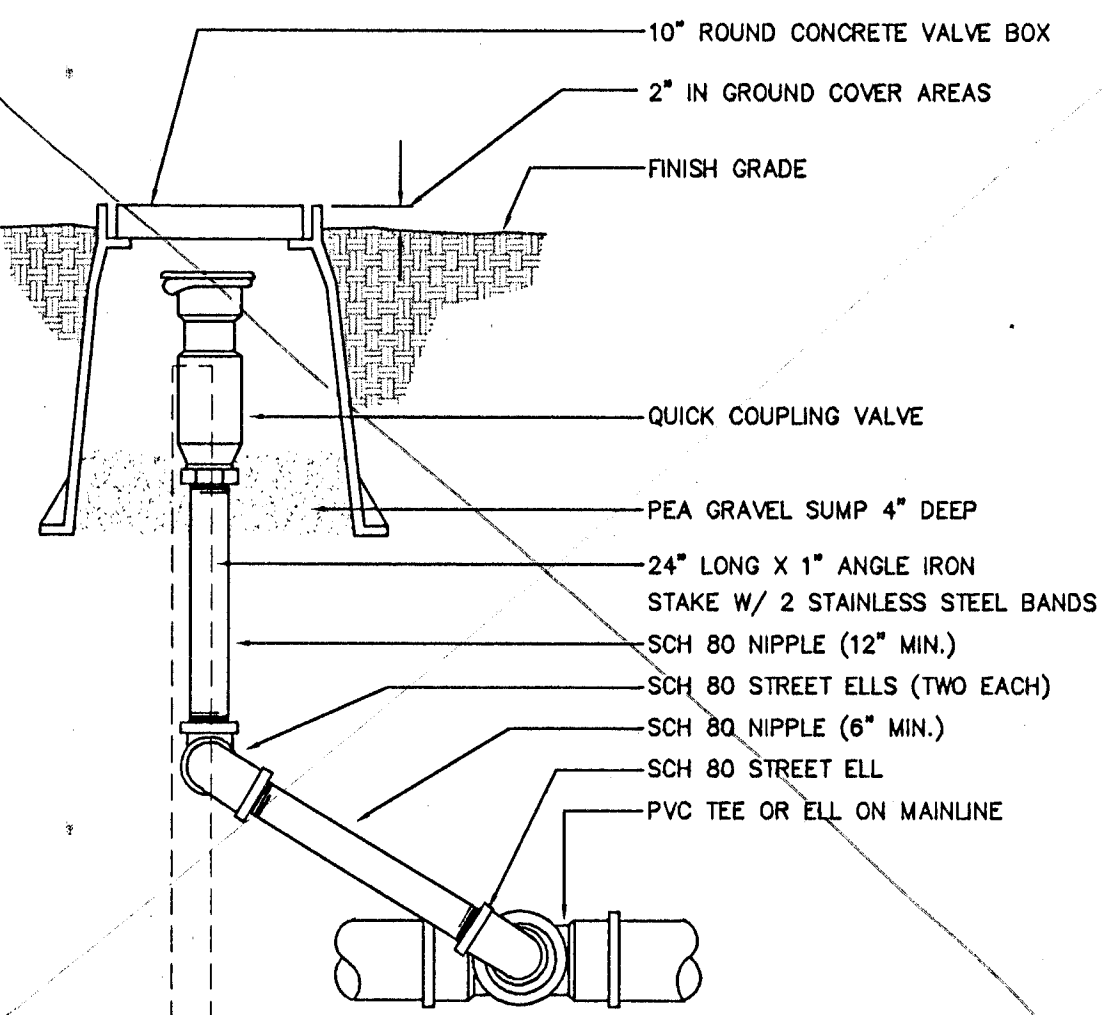
C FLOW METER
DETAIL NTS



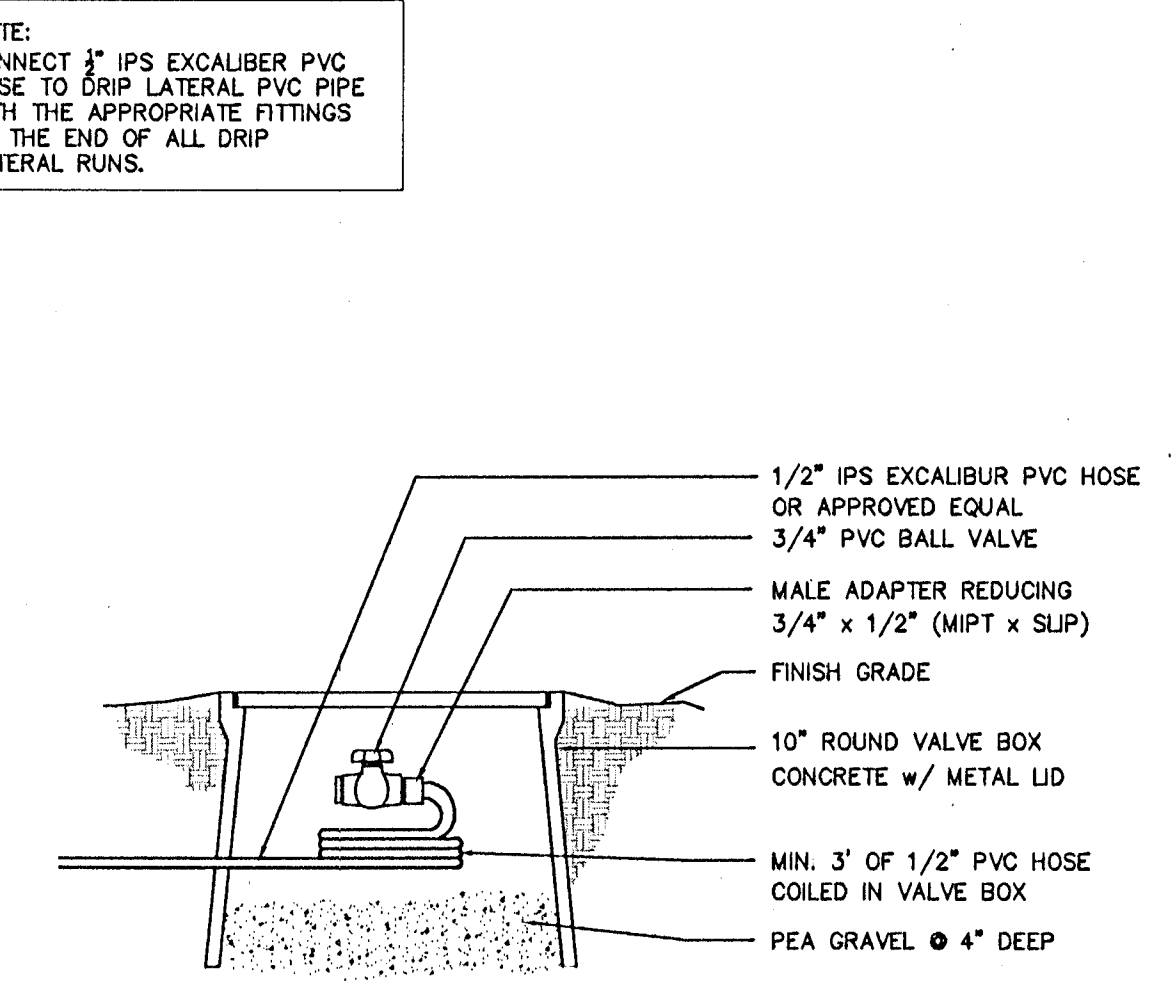
D GATE VALVE
DETAIL NTS



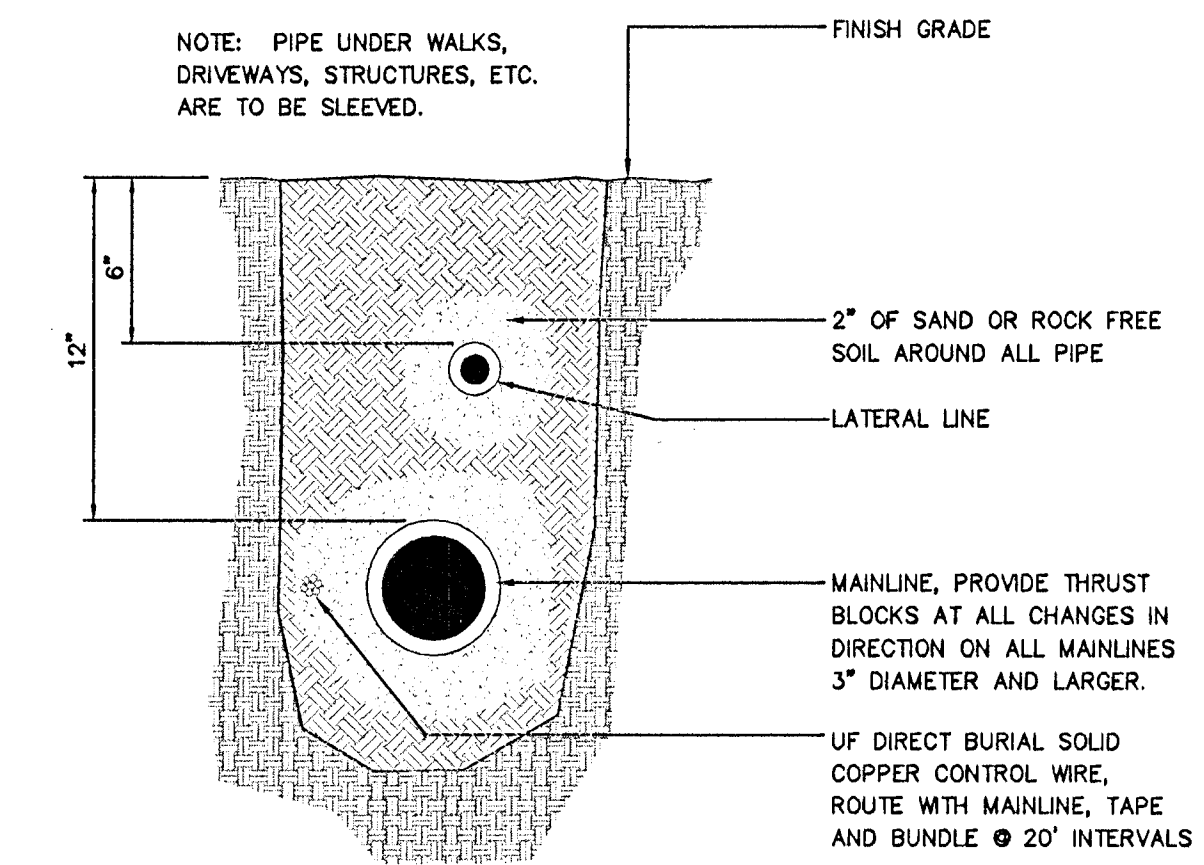
E DRIP VALVE ASSEMBLY
DETAIL NTS



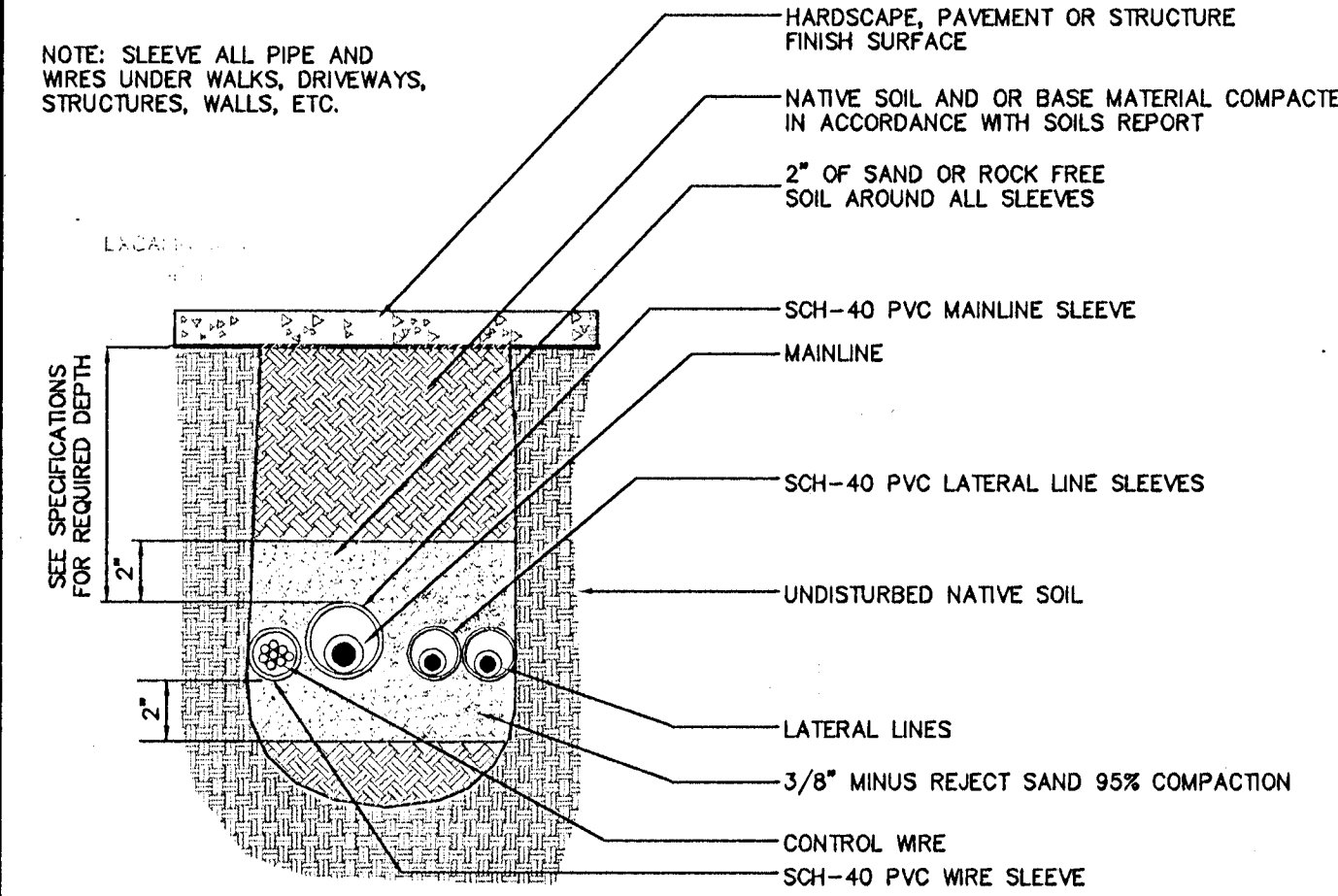
F QUICK COUPLER
DETAIL NTS



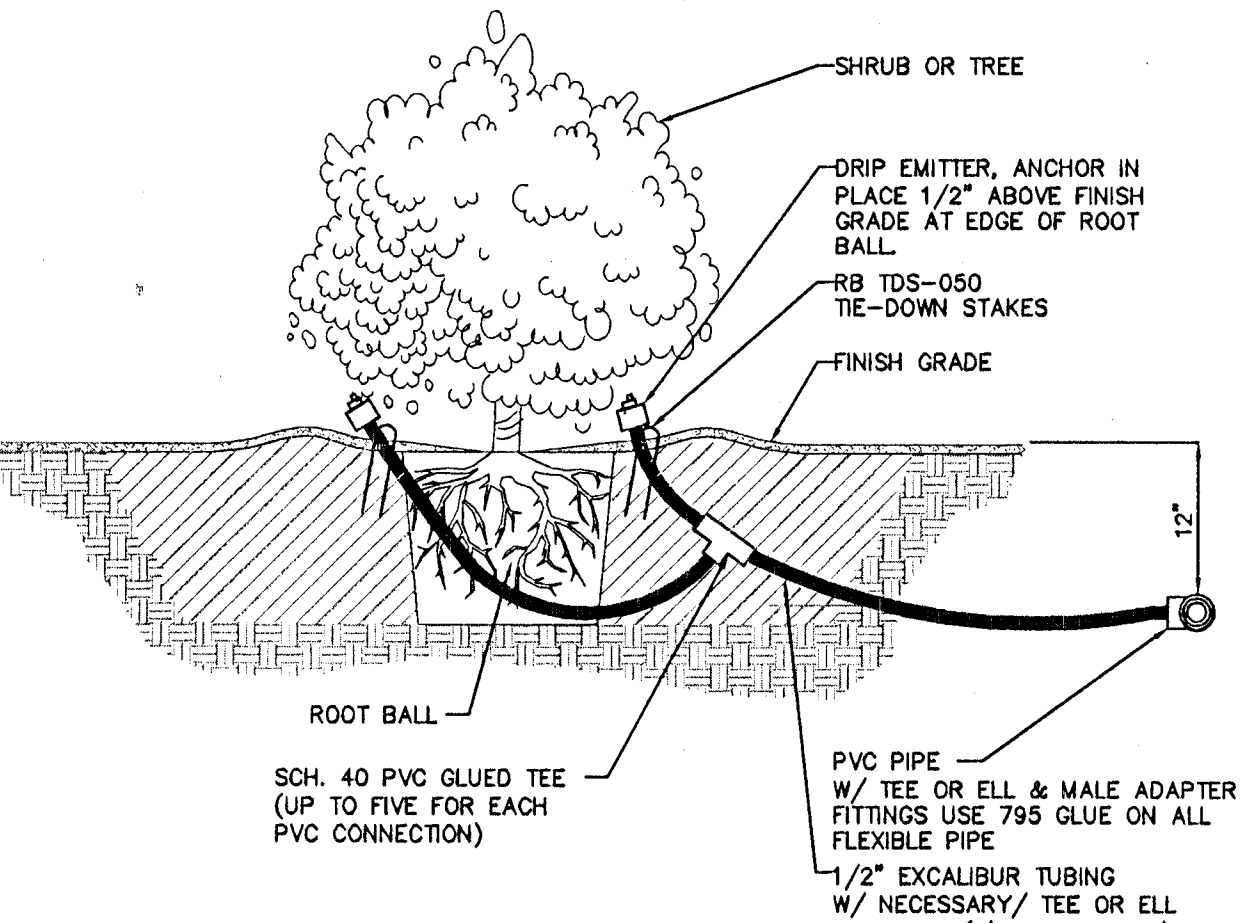
G DRIP END BALL VALVE
DETAIL NTS



H TRENCHING
DETAIL NTS



I SLEEVING
DETAIL NTS

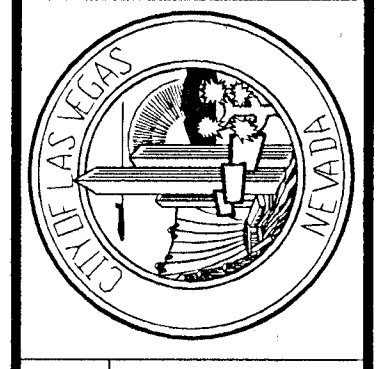


J DRIP EMITTER
DETAIL NTS

Apr 23, 2010 11:35am USER: patrick.mohr
 W:\AEP\Projects\1011_Planetree\1011_Planetree.dwg
 20130510

REVISIONS	DATE

DATE FEBRUARY 2010
 SCALE OF: N/A
 DESIGNED BY: DMC
 DRAWN BY: FR
 CHECKED BY: ACP
 © 2010
**Kimley-Horn
 and Associates, Inc.**
 Engineering, Planning, and Environmental Consultants
 2050 E. Flamingo Road, Suite 210, Las Vegas, NV 89119
 PH: (702) 734-4949
 FAX: (702) 734-5666



DEPARTMENT OF PUBLIC WORKS
 PROJECT: BONNEVILLE/CLARK
 ONEWAY COUPLER PHASE 1
 IMPROVEMENT PLANS
 SHEET: IRRIGATION DETAILS

REGISTERED LANDSCAPE ARCHITECT
 STATE OF NEVADA
 No. 1011
 2/25/08

SHEET NO. IR-08
 SHEET 89 OF 91
 DRAWING NO. 107V5201

107V5201

811
 know what's below
 Call before you dig 1-702-227-2829

SAFETY ALERT
 Call Before You Overhead

Call before you UnderGround
 1-800-432-5300

BID# 09.1730.37