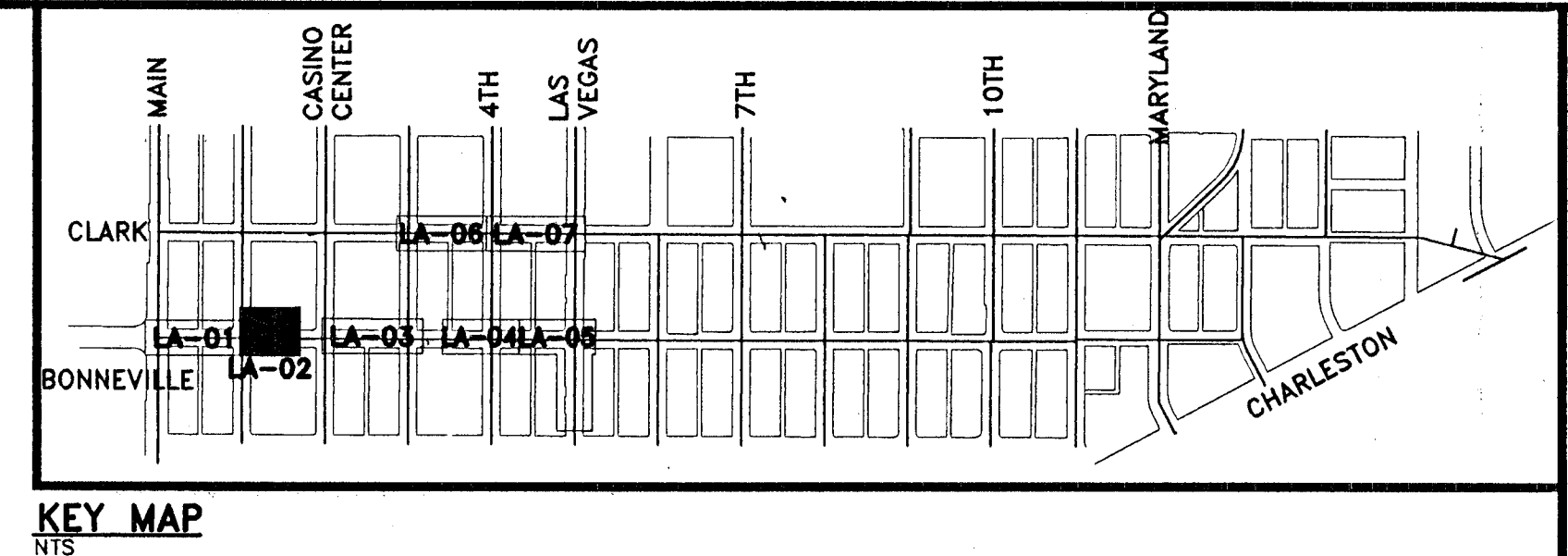
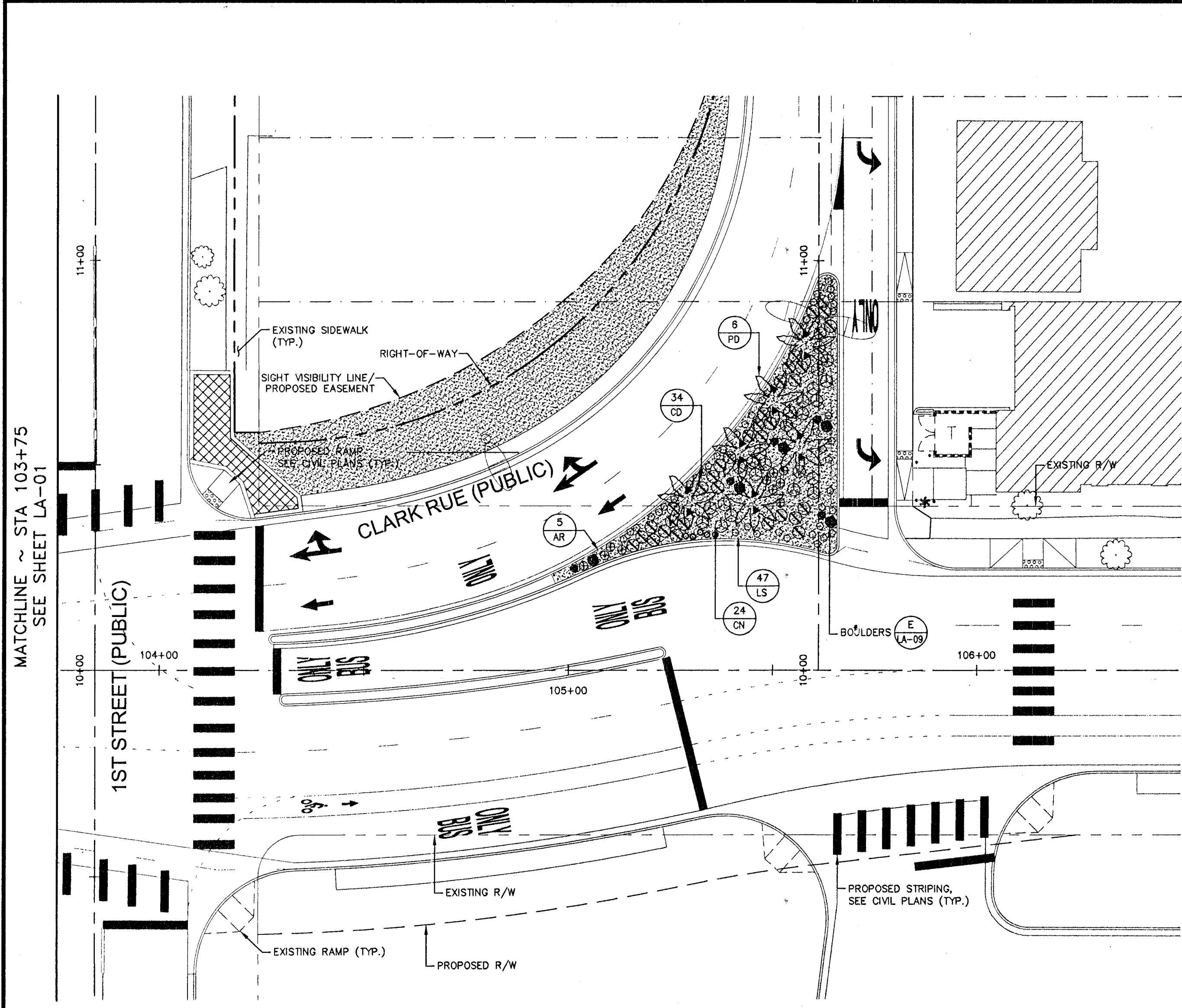


Jun 15, 2010 - 7:36am - USER: david.consealbury
 C:\VNA_Records\092-Gas Vegas\092225013-Bonnevilles-Clark\LA01-07\5650196-01_07.dwg



KEY MAP
NTS

PLANT SCHEDULE

TREES, EXISTING TREES, SHRUBS & GROUNDCOVERS				
SYMBOL	BOTANICAL NAME	COMMON NAME	QTY.	SIZE
	QV - Quercus virginiana	Southern Live Oak	49	36" BOX
	PD - Phoenix dactylifera	Phoenix Date Palm	17	36" ROOT BALL 25' HEIGHT
	XT - EXISTING TREE			
	XP - EXISTING PALM TREE			
	CN - Cassia nemophila	Desert Cassia	137	5 GAL
	CD - Cotoneaster dammeri 'Coral Beauty'	Coral Beauty Cotoneaster	122	5 GAL
	AR - Acacia redolens 'Desert Carpet'	Desert Carpet	52	5 GAL
	CO - Convolvulus cneorum	Bush Morning Glory	35	5 GAL
	LS - Lantana camara 'New Gold'	New Gold Lantana	47	5 GAL

NOTES

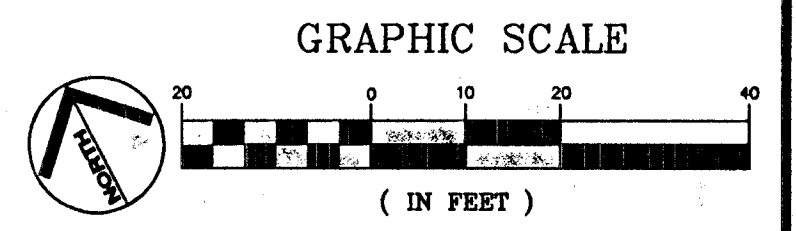
- CONTRACTOR IS RESPONSIBLE TO VERIFY ALL PLANT QUANTITIES. THE PLANT SCHEDULE IS INTENDED AS A REFERENCE ONLY.
- LANDSCAPE ARCHITECT IS TO APPROVE ALL PLANT MATERIAL PRIOR TO INSTALLATION WITH A 48 HOUR ADVANCED NOTICE.
- PLANT MATERIAL IS TO HAVE IDENTIFICATION TAGS ON 10% OF THE TOTAL QUANTITY OF EACH SPECIES, SHOWING GENUS, SPECIES, VARIETY, ETC.
- CONTRACTOR TO PROVIDE MATCHING SIZES AND FORMS OF LIKE SHRUB SPECIES AS SHOWN ON DRAWINGS.
- DECOMPOSED GRANITE, 1/2" MINUS, COLOR: "PINK CORAL", 2" DEPTH TYPICAL IN ALL PLANTING BEDS. DECOMPOSED GRANITE SHALL CONTAIN 60% AGGREGATE AND 40% FINES. CONTRACTOR TO RECEIVE VERIFICATION FROM ROCK SUPPLIER AND PRESENT VERIFICATION TO THE OWNER PRIOR TO ANY CONSTRUCTION.
- LANDSCAPE BOULDERS ARE TO BE GRANITE AND ROUND IN SHAPE. COLOR TO MATCH OR COMPLIMENT ROCK GROUND COVER. CONTRACTOR TO SET 1/4 OF ROCK DIAMETER INTO FINISH GRADE. BOULDERS TO BE 2' TO 4' IN DIAMETER, SIZED ACCORDING TO THE FOLLOWING PERCENTAGES:
 - 20% 4' LARGEST DIAMETER*
 - 40% 3' LARGEST DIAMETER
 - 40% 2' LARGEST DIAMETER

* NOT TO BE USED IN AREAS LESS THAN 7'

TOTAL QUANTITY OF BOULDERS: 68
- LANDSCAPE UPLIGHTING-
 ▲ INSTALL TRAILBLAZER LANDSCAPE LIGHT, PRODUCT CODE LT-24-12W-450-RD-VG-TW-LT6912GRS, OR APPROVED EQUAL

WHOLESALE DEALER:
 KALAMAZOO MATERIALS, INC.
 2251 SOUTH FORT APACHE ROAD, SUITE 2079
 LAS VEGAS, NV 89117
 TELEPHONE: (702) 298-9133

TAND, INC.
 AS-BUILT
 DATE: 11/18/09
 DANIEL MEYER



DATE: 11/18/09 REVISIONS: SHEET REPLACEMENT	DATE: FEBRUARY 2010 CHECKED BY: ACP DESIGNED BY: DJC DRAWN BY: FR	SCALE (H): 1/8" = 1'-0" SCALE (V): N/A	© 2010 Kimley-Horn and Associates, Inc. Engineering, Planning, and Environmental Consultants 2000 E. Flamingo Road, Suite 210, Las Vegas, NV 89119 PH: (702) 734-4349 FX: (702) 734-3666
			PROJECT: BONNEVILLE/CLARK ONEWAY COUPLETT PHASE 1 IMPROVEMENT PLANS SHEET: LANDSCAPE SHEET
DEPARTMENT OF PUBLIC WORKS			BID# 09-1730.37 REV 3

811 SAFETY ALERT
 Call Before You Dig
 Call Before You Overhead
 Call Before You UnderGround
 1-702-432-5300

20130495