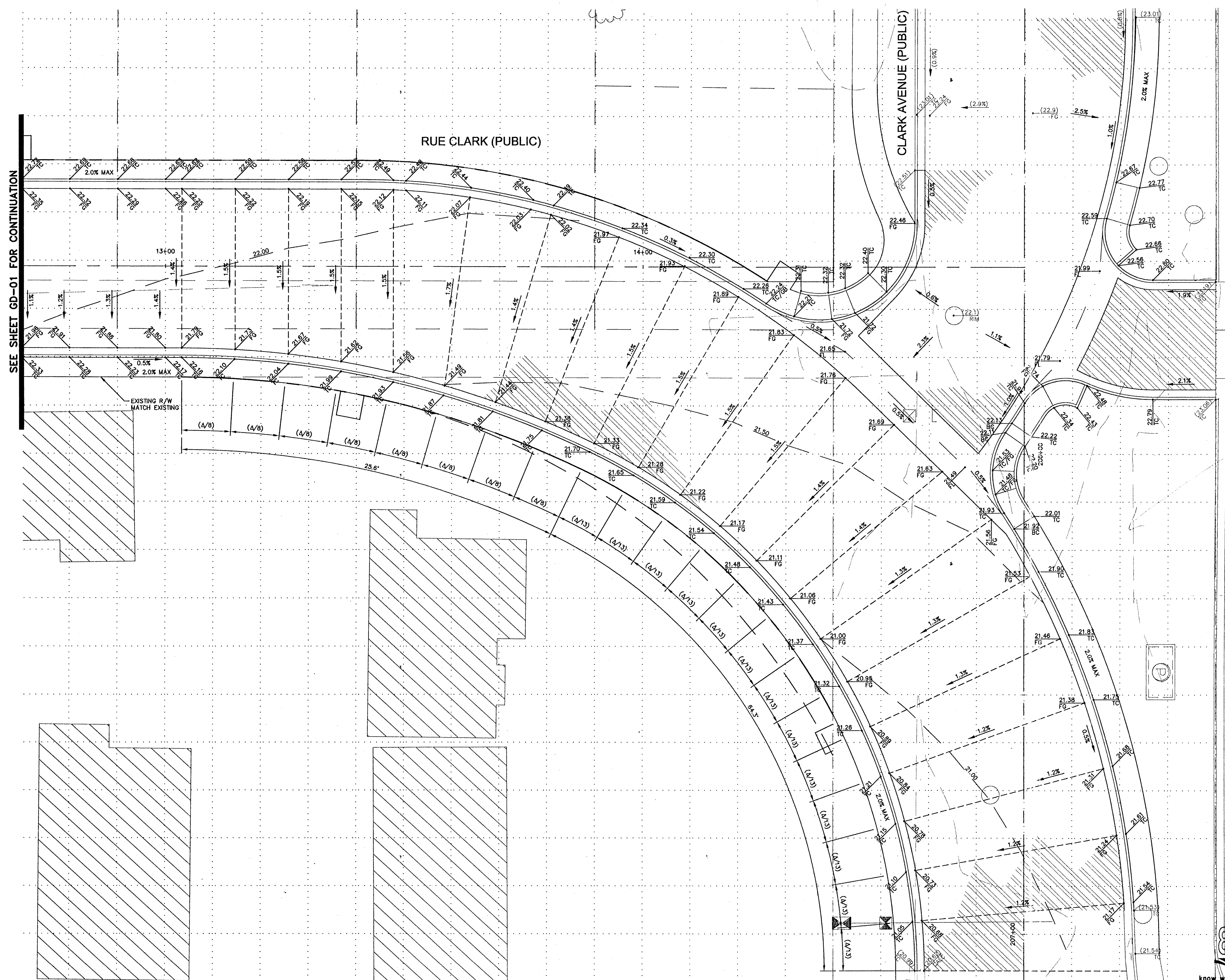


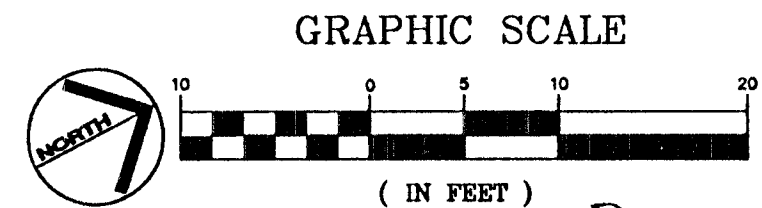
Apr 25, 2010 - 9:02pm - USER: peter.meyerhoff@tand.com  
C:\Projects\2010\09\1730\37\GD-01.dwg

SEE SHEET GD-01 FOR CONTINUATION



\* Pick Back Landscape (Drawings attached)

TAND, INC.  
AS-BUILT  
DATE 11-13-11  
DANIEL MEYER



**811**  
know what's below  
Call before you dig

**SAFETY ALERT**  
Call Before You Overhead

CALL BEFORE YOU DIG  
UNDERGROUND UTILITY SERVICES  
1-702-432-5300  
REPLY AND WE'LL SORT IT OUT FOR YOU

DATE: FEBRUARY 2010  
SCALE (H): 1"=10'  
SCALE (V): N/A  
DRAWN BY: TEA  
DESIGNED BY: TEA  
CHECKED BY: CC/PM

**Kimley-Horn and Associates, Inc.**  
Engineering, Planning, and Environmental Consultants  
2060 E. Flamingo Road, Suite 210, Las Vegas, NV 89119  
PH: (702) 735-4949  
FAX: (702) 735-4949

**DEPARTMENT OF PUBLIC WORKS**  
PROJECT: BONNEVILLE/CLARK ONEWAY COUPLER PHASE 1 IMPROVEMENT PLANS  
SHEET: GRADING DETAIL COUPLER CONNECTOR SHEET 2

**PETER N. MEYERHOFER**  
Exp: 12/31/11  
CIVIL  
Professional No. 18093  
Nevada State Board of Professional Engineers and Surveyors

SHEET NO. GD-02  
SHEET 28 OF 91  
DRAWING NO. 107V5201

BID# 09.1730.37

20130449