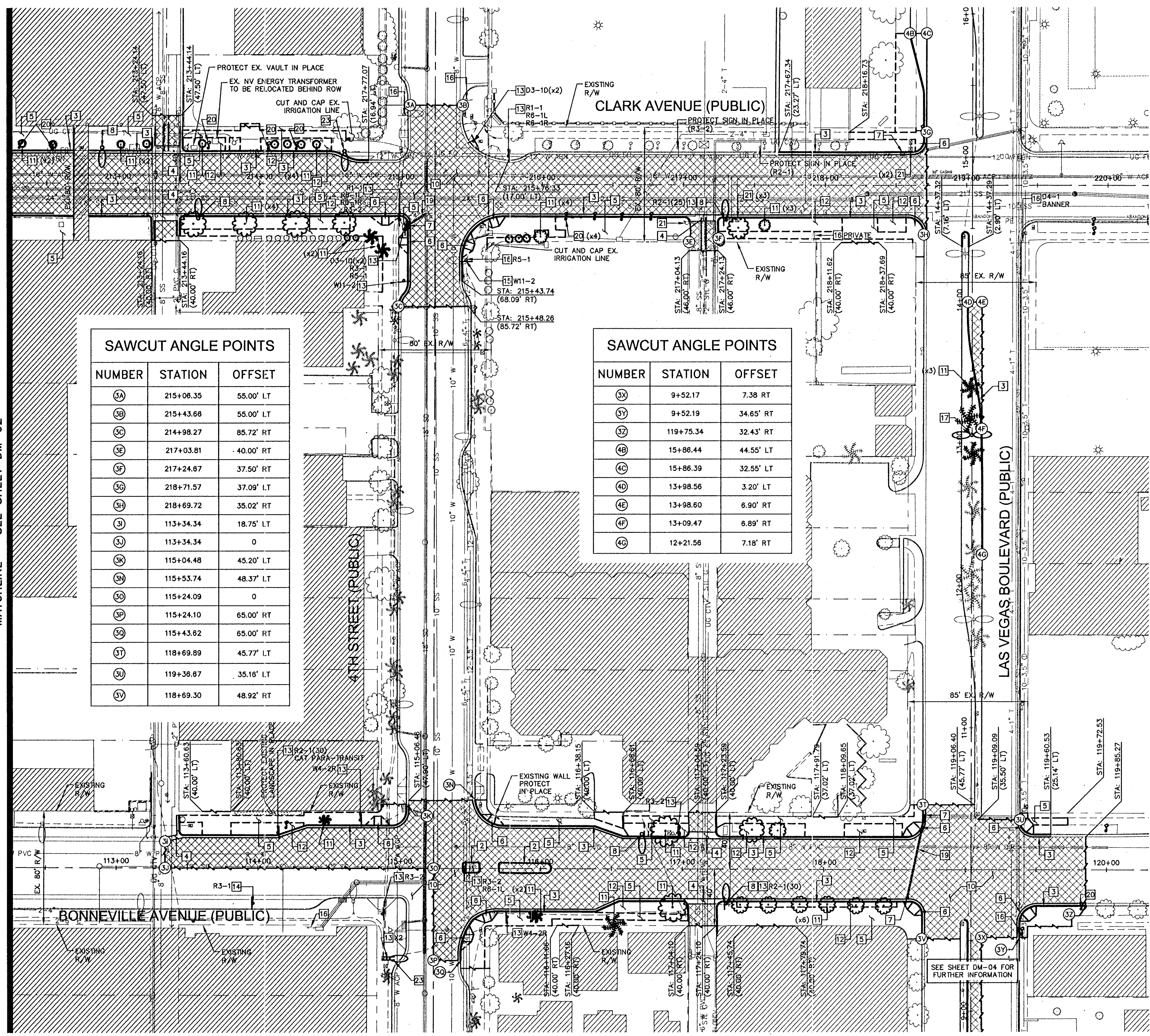


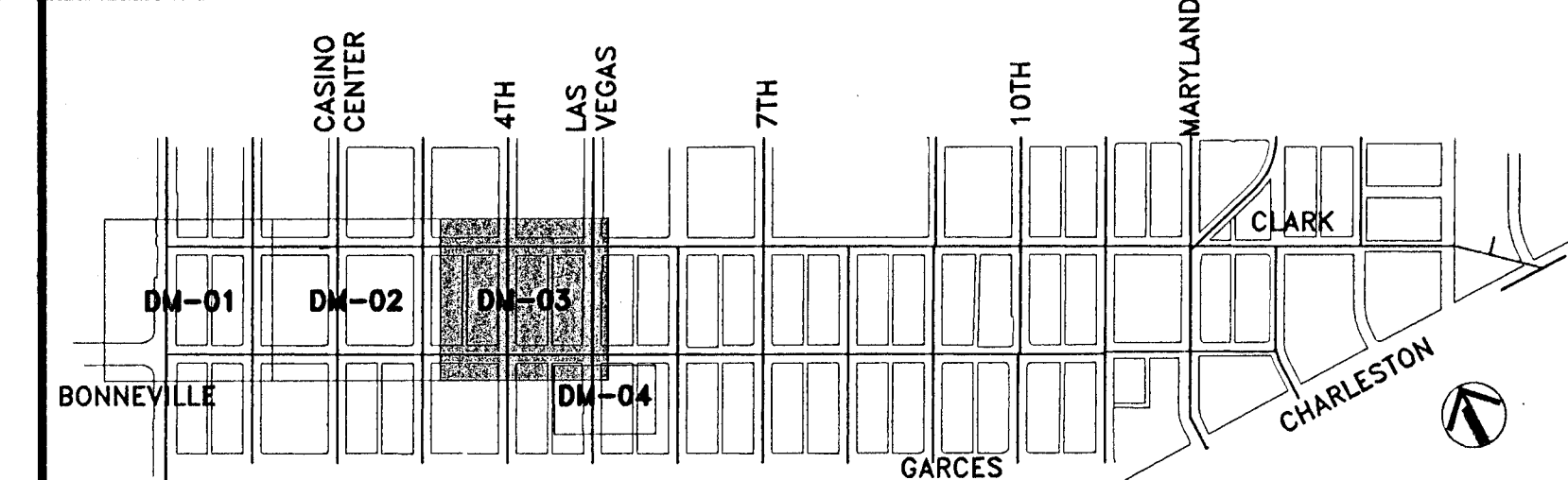
Apr 25, 2010 - 3:27pm - USER peter.meyerhofer  
 \LAPROJ\Projects\LA\_V\_Productions\1922256\018 Bonnevill-Cont. 2008\CADD\256018dm-01\_04.dwg

MATCHLINE ~ SEE SHEET DM-02



SAWCUT ANGLE POINTS		
NUMBER	STATION	OFFSET
1A	215+08.35	55.00' LT
1B	215+43.66	55.00' LT
1C	214+98.27	85.72' RT
1D	217+03.81	-40.00' RT
1E	217+24.67	37.50' RT
1F	218+71.57	37.09' LT
1G	218+69.72	35.02' RT
1H	113+34.34	18.75' LT
1I	113+34.34	0
1J	115+04.48	45.20' LT
1K	115+53.74	48.37' LT
1L	115+24.09	0
1M	115+24.10	65.00' RT
1N	115+43.62	65.00' RT
1O	118+69.89	45.77' LT
1P	119+36.67	35.16' LT
1Q	118+69.30	48.92' RT

SAWCUT ANGLE POINTS		
NUMBER	STATION	OFFSET
2A	9+52.17	7.38 RT
2B	9+52.19	34.65' RT
2C	119+75.34	32.43' RT
2D	15+86.44	44.55' LT
2E	15+86.39	32.55' LT
2F	13+98.56	3.20' LT
2G	13+98.60	6.90' RT
2H	13+09.47	6.89' RT
2I	12+21.56	7.18' RT



**KEY MAP**

**DEMOLITION NOTES**

- 1 REMOVE EXISTING ROADWAY SECTION TO DEPTH NEEDED FOR PROPOSED STRUCTURAL SECTION. (SEE TY SHEETS FOR DETAILS).
- 2 EXISTING BUILDING TO REMAIN.
- 3 LIMIT OF EXISTING SURFACE SAWCUT.
- 4 REMOVE EXISTING K-71 MARKER POST.
- 5 REMOVE ASPHALT CONCRETE MEDIAN WITH CURB.
- 6 REMOVE EXISTING CURB AND GUTTER.
- 7 REMOVE VALLEY GUTTER.
- 8 REMOVE EXISTING SIDEWALK TO RIGHT-OF-WAY LINE OR FACE OF BUILDING. SAWCUT IF NO JOINT EXISTS.
- 9 REMOVE EXISTING CURB RAMP.
- 10 REMOVE EXISTING DROP INLET.
- 11 REMOVE AND SALVAGE EXISTING STREET LIGHT POLE AND EQUIPMENT. DELIVER SALVAGED EQUIPMENT TO CLV EAST YARD. CALL 229-6331 PRIOR TO DELIVERY. THE CONTRACTOR SHALL BE HELD RESPONSIBLE FOR DAMAGE TO ANY EQUIPMENT. REMOVE FOUNDATION. (SEE SL SHEETS FOR DETAILS)
- 12 REMOVE EXISTING BOLLARD AND FOUNDATION.
- 13 SEE DM-05 THRU DM-08 FOR TRAFFIC SIGNAL DEMOLITION.
- 14 REMOVE EXISTING TREE, REPAIR, CAP, AND/OR RECONSTRUCT EXISTING IRRIGATION AND LANDSCAPING LIGHTING. (SEE LA AND IR PLANS).
- 15 REMOVE EXISTING LANDSCAPING UP TO RIGHT-OF-WAY LINE OR TO LIMITS SHOWN ON PLANS.
- 16 REMOVE AND SALVAGE EXISTING SIGN AND POST, RETURN SIGN TO CLV. REMOVE FOUNDATION.
- 17 REMOVE AND RELOCATE EXISTING SIGN. REMOVE AND SALVAGE EXISTING POLE. REMOVE FOUNDATION. SEE SIGNING AND MARKING PLAN FOR NEW LOCATION(S).
- 18 REMOVE AND SALVAGE EXISTING SIGN. EXISTING POLE AND FOUNDATION TO REMAIN. ADJUST LOCATION OF REMAINING SIGNS ON POLE AS DIRECTED BY THE ENGINEER.
- 19 EXISTING SIGN(S), POLE, AND FOUNDATION TO REMAIN. PROTECT IN PLACE.
- 20 REMOVE AND RELOCATE EXISTING MEDIAN STREET LIGHT ASSEMBLY TO NEW FOUNDATION. REMOVE EXISTING FOUNDATION. CONTRACTOR SHALL BE HELD RESPONSIBLE FOR DAMAGE TO ANY EXISTING EQUIPMENT. SEE STREET LIGHT SHEETS FOR DESIGN AND DETAILS.
- 21 CUT AND CAP EXISTING STORM DRAIN LATERAL LATERAL TO BE CUT 18" FROM SAWCUT LIMITS. REMOVE RCP LATERAL AND INLET.
- 22 REMOVE EXISTING STORM DRAIN LATERAL.
- 23 REMOVE AND SALVAGE EXISTING PARKING METER POST. REMOVE FOUNDATION. CONTRACTOR TO COORDINATE WITH CLV PARKING ENFORCEMENT FOR METER HEAD REMOVAL.
- 24 RELOCATE OR ABANDON EXISTING WATER METER, RPPA OR FIRE HYDRANT. (SEE UT SHEETS FOR DETAILS).
- 25 NOT USED.
- 26 REMOVE AND RELOCATE EXISTING "CENTENNIAL STANDARD" POLE AND HARDWARE. REMOVE EXISTING FOUNDATION. CONTRACTOR SHALL BE HELD RESPONSIBLE FOR DAMAGE TO ANY EXISTING EQUIPMENT. SEE STREET LIGHT SHEETS FOR DESIGN AND DETAILS.
- 27 POWER POLE TO BE RELOCATED. SEE NV ENERGY PLANS FOR DESIGN AND DETAILS.

**GENERAL NOTES**

1. DEMOLITION PLANS (DM SHEETS) ARE FOR THE CONVENIENCE OF THE CONTRACTOR. CONTRACTOR SHALL REFER TO THE CONSTRUCTION PLANS TO DETERMINE THE EXACT LIMITS OF DEMOLITION PRIOR TO PROCEEDING.
2. CONTRACTOR SHALL MAINTAIN EXISTING STREET LIGHT CIRCUITS FOR EQUIPMENT NOT REMOVED DURING DEMOLITION.
3. CONTRACTOR SHALL MAINTAIN EXISTING IRRIGATION FOR ALL AREAS NOT REMOVED DURING DEMOLITION.
4. EXISTING STREET LIGHTS AND TRAFFIC SIGNALS SHALL REMAIN IN OPERATION UNTIL NEW SYSTEMS ARE OPERATIONAL.
5. ALL STREET LIGHTING EQUIPMENT DESIGNATED TO BE SALVAGED SHALL BE DELIVERED BY THE CONTRACTOR TO THE APPROPRIATE CLV SERVICE YARD WITH A MEANS TO UNLOAD. A 24-HOUR NOTICE OF DELIVERY IS REQUIRED. CALL 229-6331 TO SET UP DELIVERY TIME. REPAIR OF ANY DAMAGE TO EQUIPMENT DURING REMOVAL AND DELIVERY WILL BE THE CONTRACTOR'S RESPONSIBILITY, AT NO ADDITIONAL COST TO THE CITY.
6. CONTRACTOR SHALL REMOVE ALL POLE, STREET LIGHT, CABINET AND SIGN FOUNDATIONS TO A MINIMUM OF 2 FEET BELOW GRADE.
7. CONTRACTOR SHALL CONTACT CLV PARKING ENFORCEMENT FOR REMOVAL OF PARKING METER HEADS. ONCE METER HEAD HAS BEEN REMOVED, CONTRACTOR TO REMOVE POST TO MINIMUM 2' BELOW GRADE.
8. CONTRACTOR SHALL COORDINATE WITH CLV FOR REMOVAL AND/OR RELOCATION OF EXISTING MAGAZINE RACKS AND TRASH RECEPTACLES.
9. SEE SL AND TS SHEETS FOR PULL BOX ADJUSTMENTS AND/OR RELOCATION.

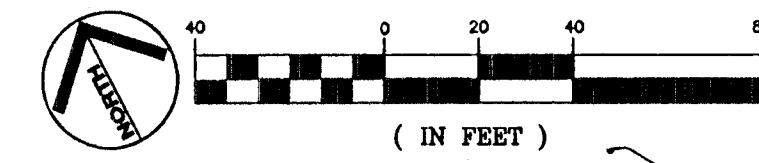
**BASIS OF BEARING**

THE BASIS OF BEARINGS FOR THIS SURVEY IS GRID NORTH AS DEFINED BY THE NORTH AMERICAN DATUM OF 1983 (NAD 83), NEVADA STATE PLANE EAST (2701) ZONE. SAID BEARINGS WERE DETERMINED BY STATIC GLOBAL POSITIONING SYSTEM (GPS) MEASUREMENTS PROCESSED BY THE NATIONAL GEODETIC SURVEY DIVISION OF THE NATIONAL OCEANIC AND ATMOSPHERIC ADMINISTRATION USING THE ON-LINE POSITIONING USER SERVICE (OPUS). THE REFERENCE FRAME USED WAS NAD83 (GORS96) WITH AN EPOCH OF 2002.0000. ALL DISTANCES SHOWN HEREON ARE GROUND VALUES.

**BENCHMARK**

CITY OF LAS VEGAS VERTICAL CONTROL POINT "6001 345W6", BEING A RIVET & PLATE IN TOP OF CURB ON THE EAST SIDE OF MAIN BETWEEN BONNEVILLE & GARCES @ LIGHT POLE.  
 ELEVATION: 2027.08 (FEET)  
 617.8544 (METERS)

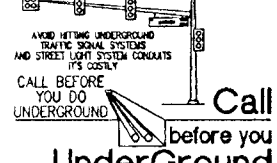
CITY OF LAS VEGAS VERTICAL CONTROL DATED 06/2002 BASED UPON THE NORTH AMERICAN VERTICAL DATUM OF 1988 (NAVD 88).  
**GRAPHIC SCALE**



**TAND, INC.**  
**AS-BUILT**



**SAFETY ALERT**  
 Call Before You Overhead



DATE: DANIEL MEYER know what's below Call before you dig 1-702-227-2929  
 UnderGround 1-702-432-5300

DATE	REVISIONS

SCALE (H): 1"=40'  
 SCALE (V): N/A  
 DATE: FEBRUARY 2010  
 DESIGNED BY: TEA  
 CHECKED BY: CC/PM  
 DRAWN BY: TEA



**DEPARTMENT OF PUBLIC WORKS**  
 BONNEVILLE/CLARK  
 ONEWAY COUPLER PHASE 1  
 IMPROVEMENT PLANS  
 PROJECT: DEMOLITION SHEET

SHEET: SHEET 8 OF 91  
 DRAWING NO: 107V5201

BID# 09.1730.37