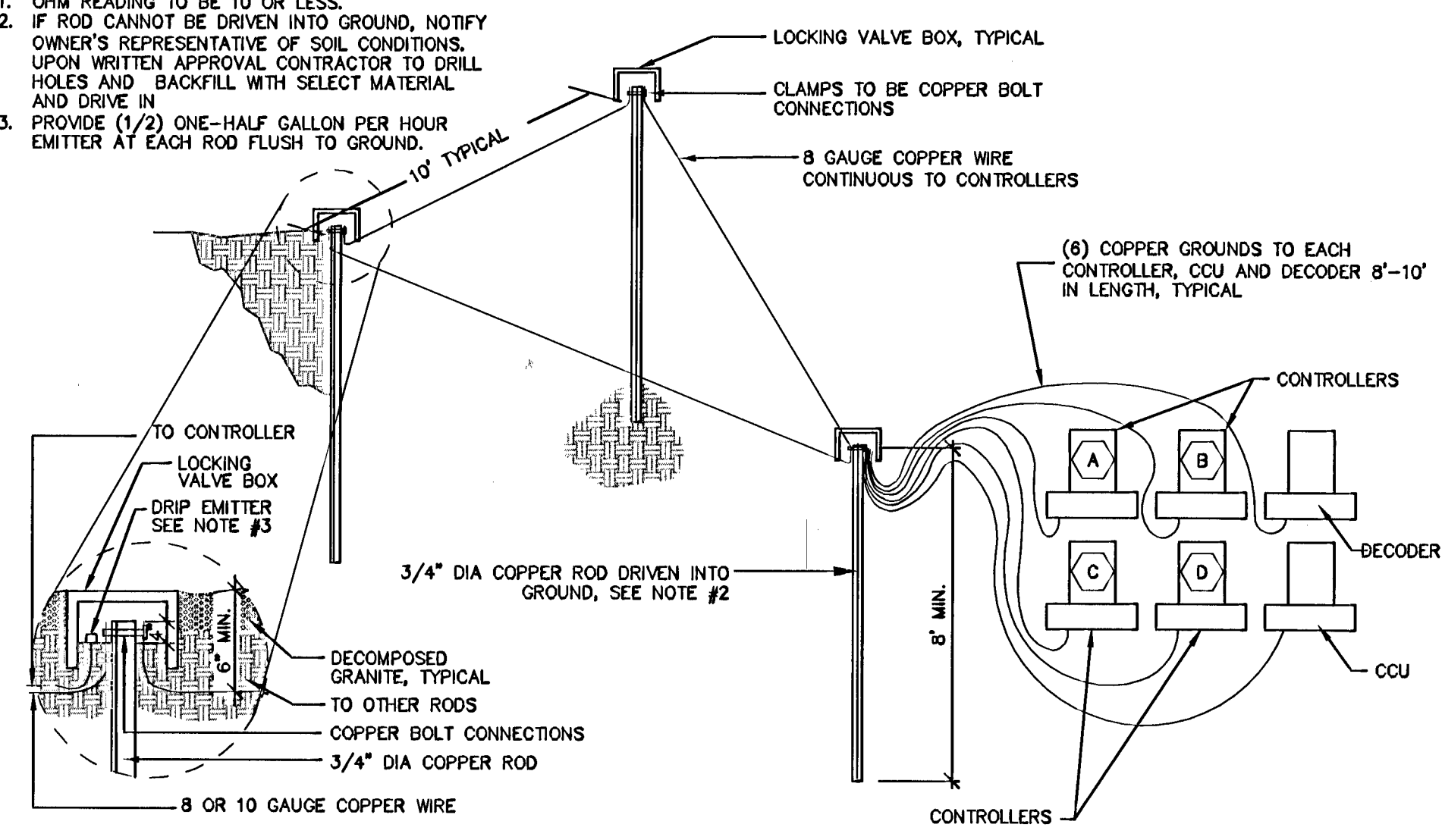
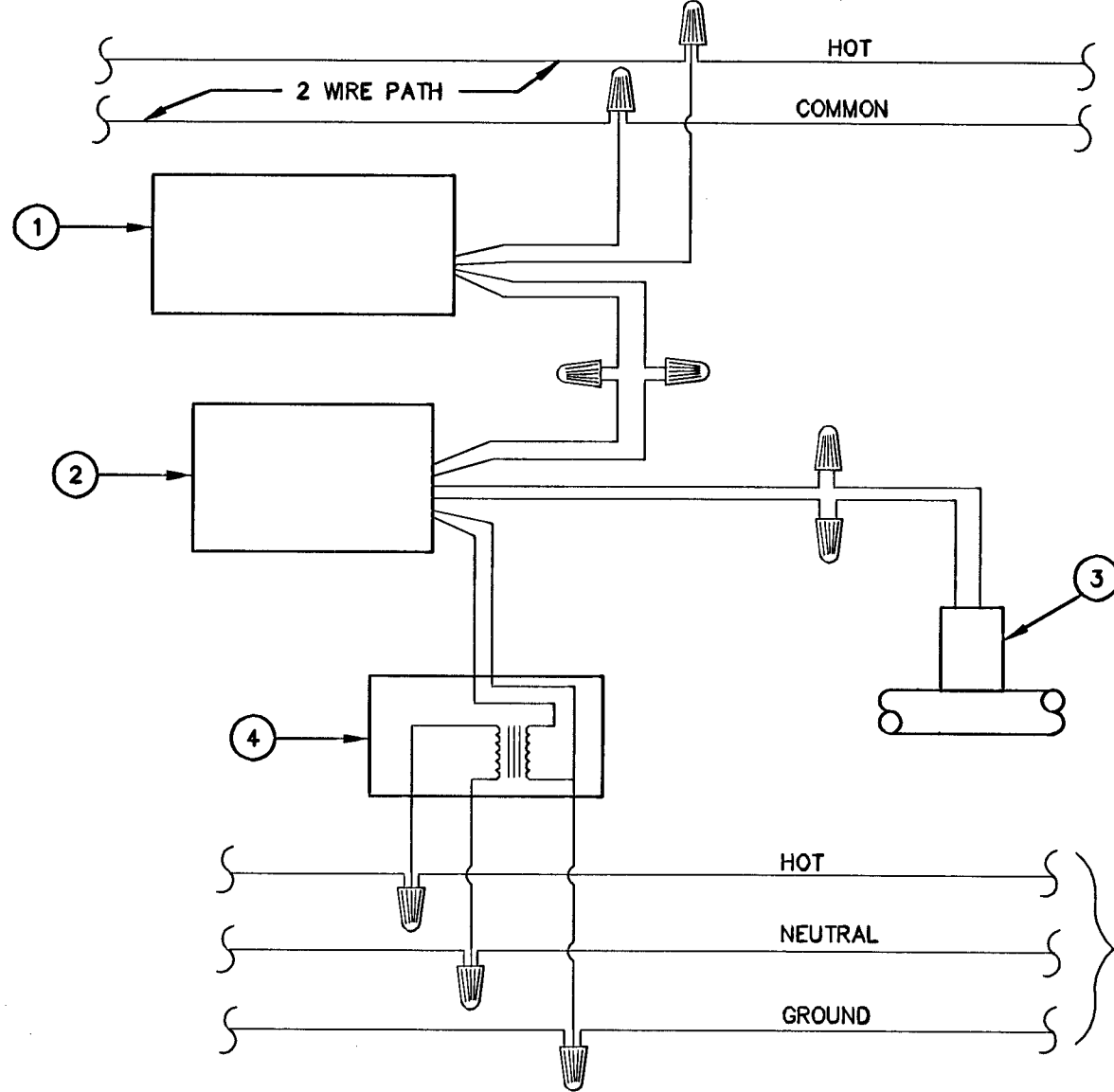


- NOTES:**
- OHM READING TO BE 10 OR LESS.
 - IF ROD CANNOT BE DRIVEN INTO GROUND, NOTIFY OWNER'S REPRESENTATIVE OF SOIL CONDITIONS UPON WRITTEN APPROVAL CONTRACTOR TO DRILL HOLES AND BACKFILL WITH SELECT MATERIAL AND DRIVE IN.
 - PROVIDE (1/2) ONE-HALF GALLON PER HOUR EMITTER AT EACH ROD FLUSH TO GROUND.



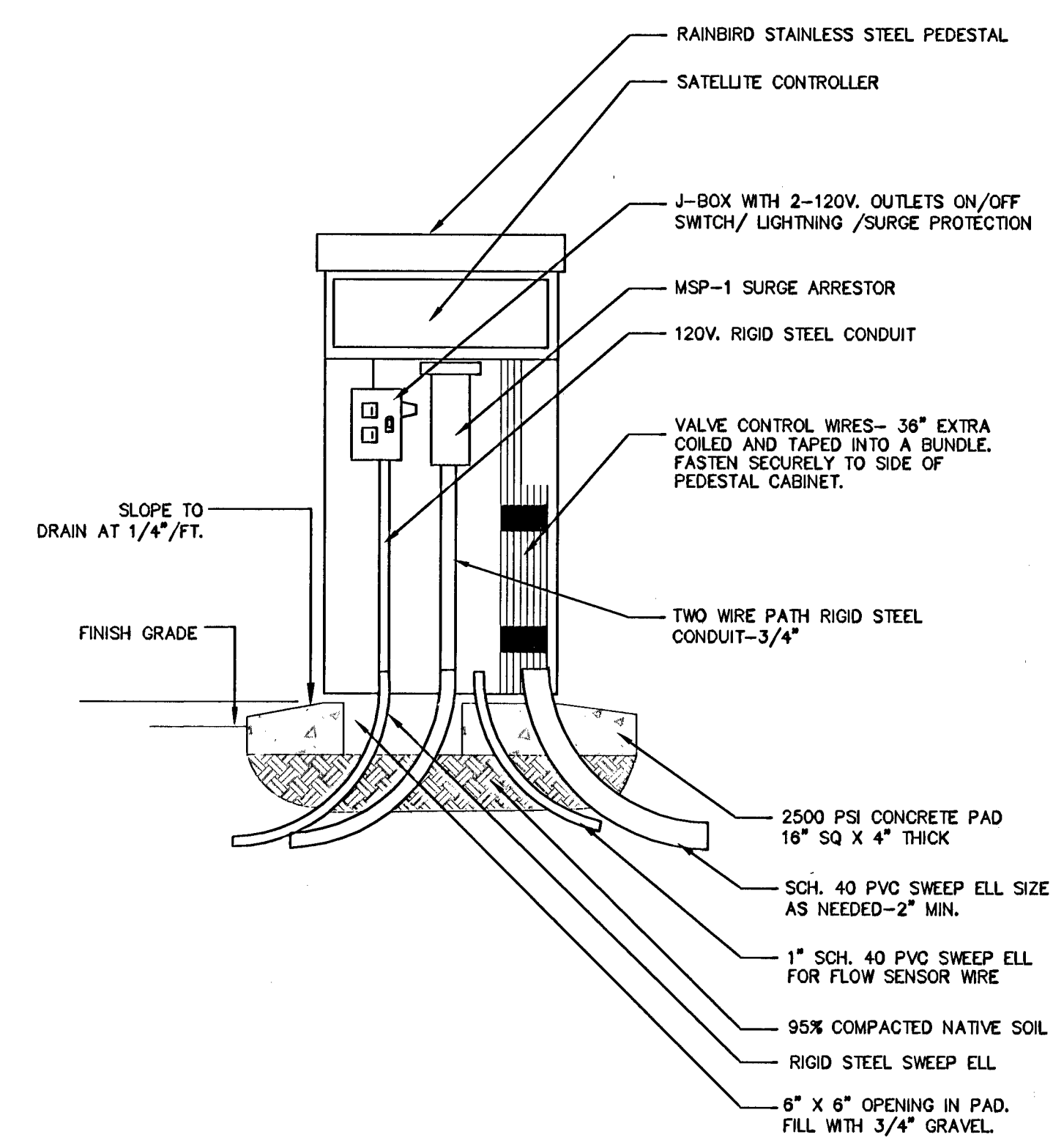
A GROUNDING FOR IRRIGATION CONTROLLER DETAIL
NTS



B FLOW SENSOR WIRING DETAIL
NTS

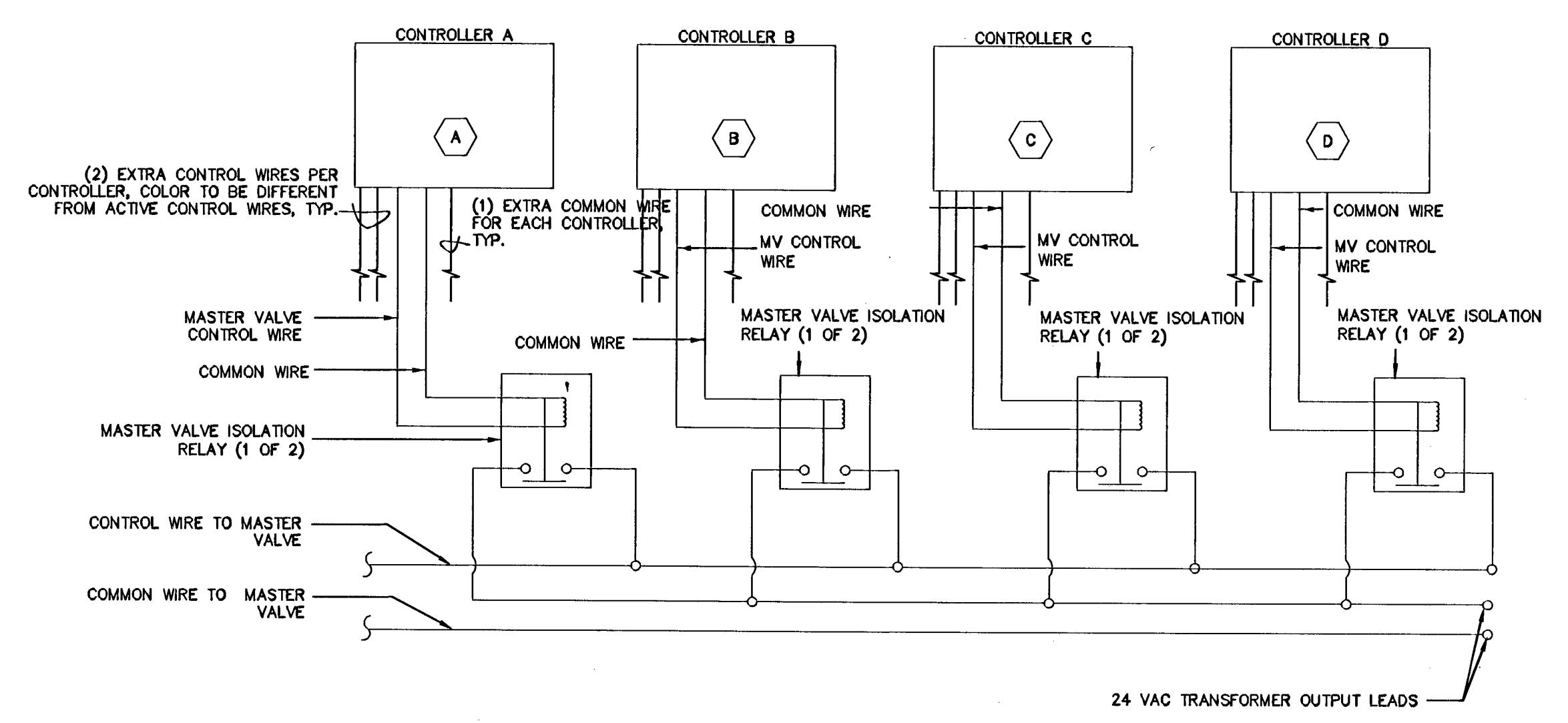
- RAIN BIRD PULSE DECODER
- DATA INDUSTRIAL MODEL 1502 PULSE TRANSMITTER
- FLOW SENSOR PER LEGEND.
- RAINBIRD 24 VAC POWER SUPPLY
- 110 VAC SUPPLY

- NOTE:**
- DATA INDUSTRIAL FLOW SENSOR TO BE LOCATED NO MORE THAN 2000' FROM DATA INDUSTRIAL MODEL 1502.
 - INSTALL DECODER IN SEPARATE PEDESTAL FROM IRRIGATION CONTROLLERS.



- NOTE:**
- CONTRACTOR TO PROVIDE GROUND FOR SATELLITE CONTROLLER AS PER DETAIL 'A', THIS SHEET.
 - MOUNT ALL COMPONENTS WITH STAINLESS STEEL HARDWARE PER RAINBIRD RECOMMENDATIONS.

C MAXICOM SATELLITE PEDESTAL INTERNAL LAYOUT
NTS

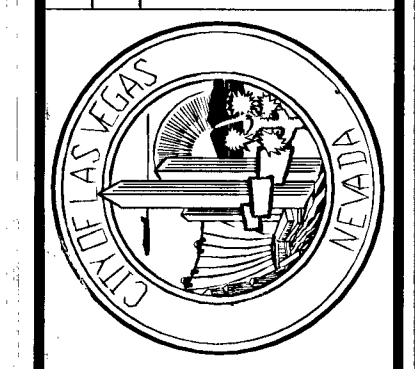


- NOTES:**
- USE SPDT RELAY AND SOCKET WITH 24 VAC OPERATING COIL, DAYTON 2W925 WITH SOCKET OR EQUAL.
 - USE 40 VA TRANSFORMER WITH 120 VAC PRIMARY AND 24 VAC SECONDARY, DAYTON 3A359 OR EQUAL.
 - INSTALL RELAYS AND TRANSFORMER IN A NEMA 1 JUNCTION BOX BELOW THE CONTROLLERS.
 - LOCATE MOUNTING HARDWARE FOR CONTROLLER INSIDE IRRIGATION CONTROLLER.

D MASTER VALVE RELAY WIRING DETAIL
NTS

REVISIONS	DATE

DATE: FEBRUARY 2010
 SCALE: (A) - N/A
 DESIGNED BY: D.C.
 DRAWN BY: FR
 CHECKED BY: ACP
 © 2010
Kimley-Horn and Associates, Inc.
 Engineering, Planning, and Environmental Consultants
 2080 E. Flamingo Road, Suite 210, Las Vegas, NV 89119
 PH: (702) 735-4949
 FAX: (702) 735-4949



DEPARTMENT OF PUBLIC WORKS
 PROJECT: BONNEVILLE/CLARK ONEWAY COUPLER PHASE 1 IMPROVEMENT PLANS
 SHEET: IRRIGATION DETAILS

LANDSCAPE ARCHITECT
 STATE OF NEVADA
 LICENSE NO. 791
 EXPIRES: 02/28/2012
 SHEET NO. IR-110
 SHEET 9 OF 91
 DRAWING NO. 132-5300
 DATE: 02/28/2010
 107V5201

811 SAFETY ALERT
 Call before you dig
 Call before you Overhead

Call before you dig
 UnderGround
 1-800-4-A-DIG
 702-227-2929

Apr 23, 2010 - 11:37am - USER: c:\pwworking\kimley-horn\Projects\107V5201\107V5201.dwg
 124580