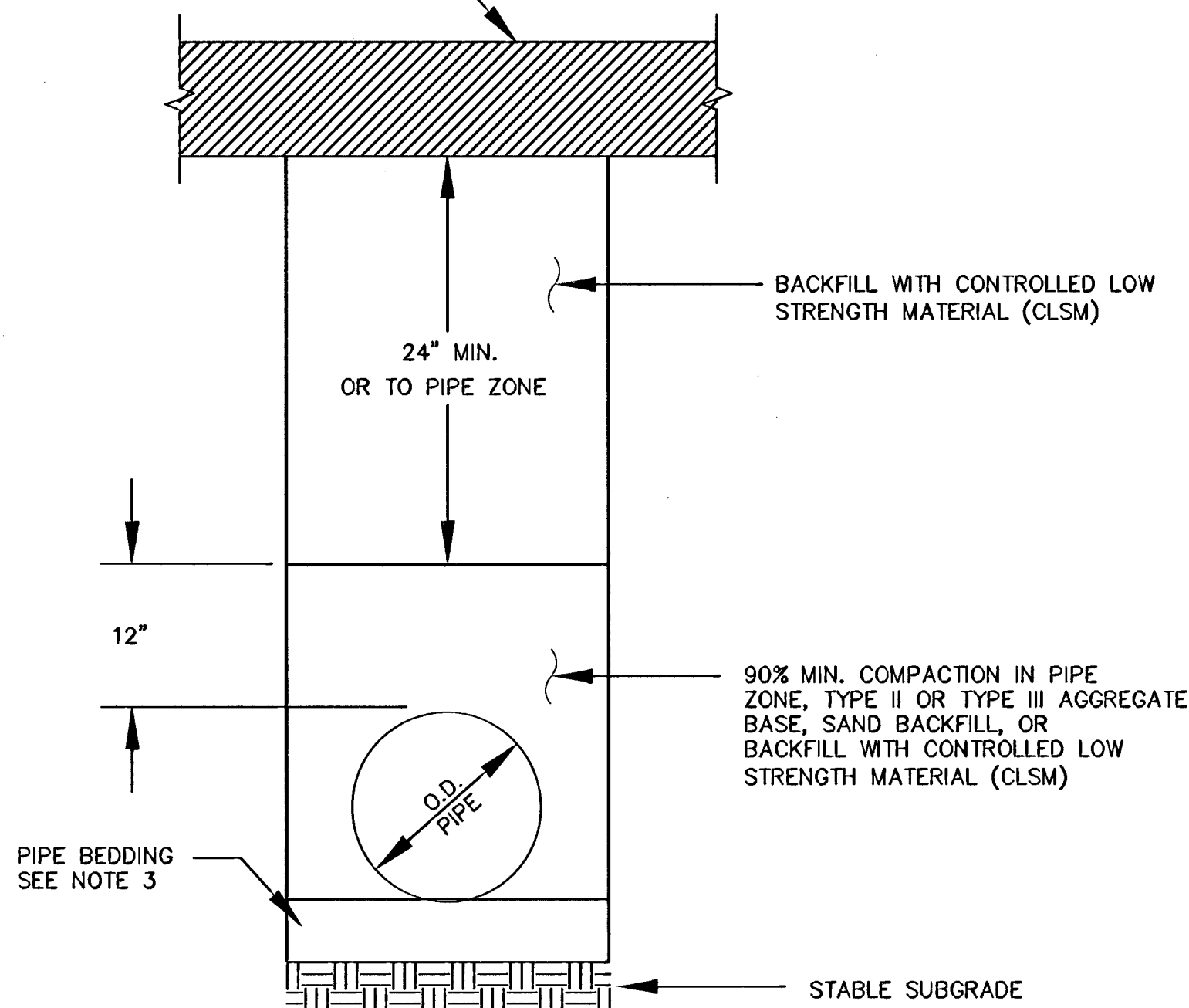


PROPOSED ROADWAY STRUCTURAL SECTION
(SEE ROADWAY PLANS AND TY SHEETS)

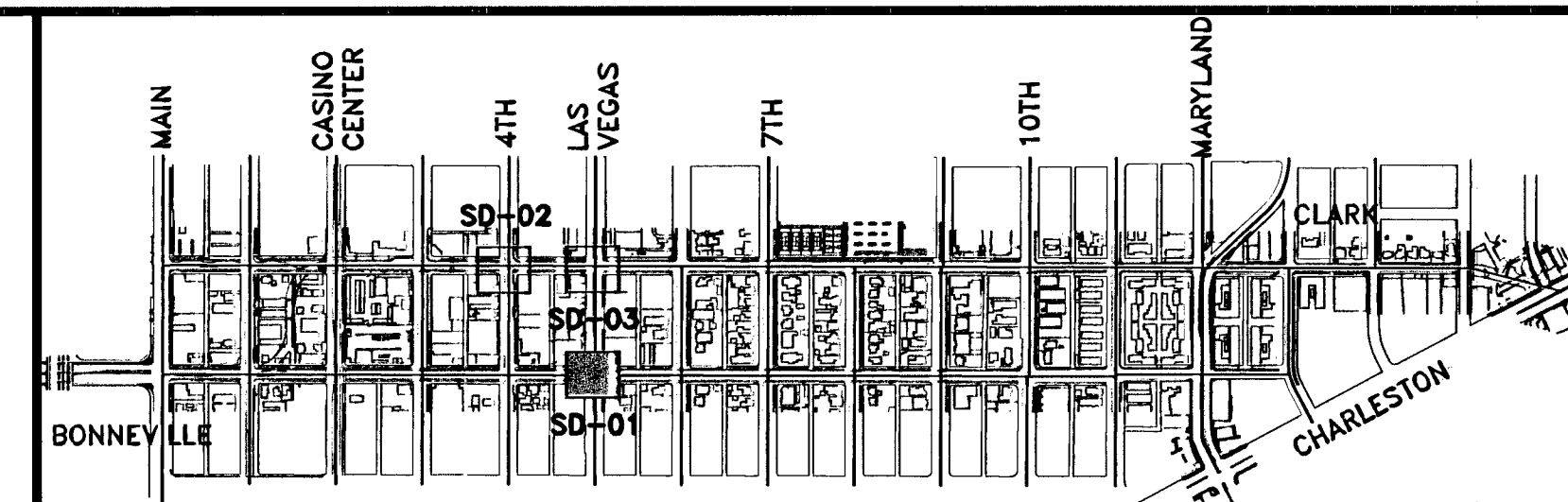
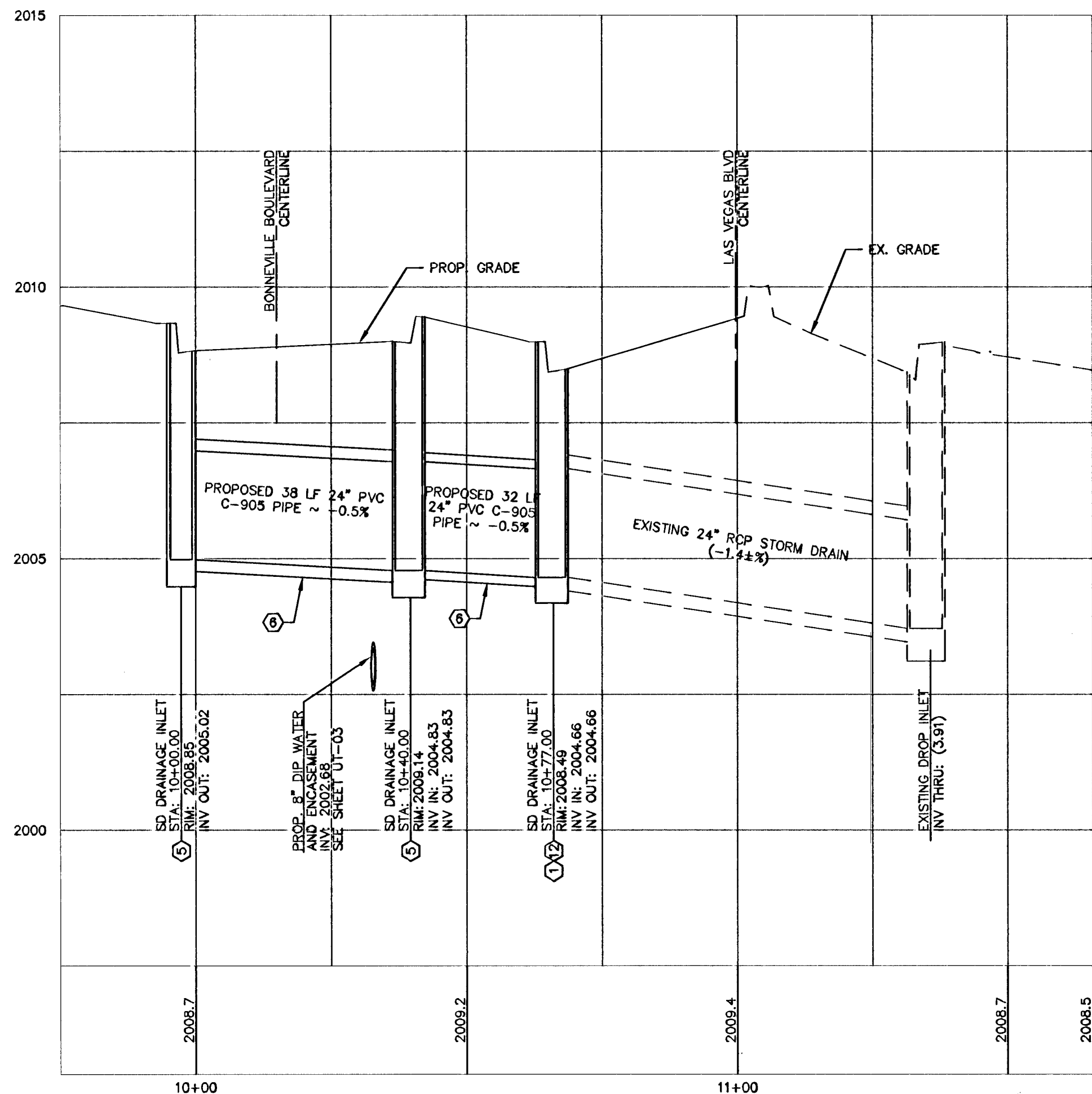


NOTES:

1. NO STONES OR LUMPS GREATER THAN 3" PERMITTED IN TRENCH 2' OR LESS IN WIDTH.
2. TRENCH WIDTH, BEDDING, SUBGRADE AND PIPE ZONE REQUIREMENTS FOR UTILITY INSTALLATIONS SHALL CONFORM TO CITY OF LAS VEGAS REQUIREMENTS.
3. CRUSHED ROCK MAY BE USED FOR PIPE BEDDING ONLY IF MATERIAL USE HAS BEEN SPECIFICALLY APPROVED BY THE GOVERNING AGENCY. SEE STANDARD DRAWING NO. 505 FOR PIPE BEDDING METHODS.
4. LAS VEGAS VALLEY WATER DISTRICT REQUIRES PIPE BEDDING AND BACKFILL WITHIN THE PIPE ZONE TO BE OF SAME MATERIAL.

**TRENCH BACKFILL PAVED AREAS
DETAIL**

(REFERENCE CCAUSD No. 503 - MODIFIED) N.T.S.



KEY MAP

STORM DRAIN NOTES

1. REMOVE EXISTING DROP INLET.
2. CONNECT PROPOSED IMPROVEMENTS TO EXISTING STORM DRAIN PIPE.
3. CONSTRUCT 60 INCH TYPE III MANHOLE PER CCAUSD No. 408.
4. CONSTRUCT TYPE "CM2" DROP INLET (L=5.0') PER CCAUSD No. 412A.
5. CONSTRUCT TYPE "CM2" DROP INLET (L=15.0') PER CCAUSD No. 412A.
6. INSTALL 24" C-905 PVC PIPE. SEE TRENCH DETAIL SHEET SD-1. STORM PIPE SHALL BE A MINIMUM 6" VERTICAL ABOVE WATER CROSSINGS.
7. CONSTRUCT 24" REINFORCED CONCRETE PIPE CLASS III.
8. CONSTRUCT 18" REINFORCED CONCRETE PIPE CLASS III.
9. REMOVE OR ABANDON EXISTING STORM DRAIN LATERAL. IF ABANDON, CUT AND CAP PIPE, BACKFILL WITH CONCRETE SLURRY.
10. CONNECT PROPOSED RCP STORM DRAIN TO EXISTING 48" MANHOLE. PROTECT EXISTING MANHOLE IN PLACE.
11. SAWCUT EXISTING 18" RCP STORM DRAIN 8" FROM EXISTING DROP INLET AND PROTECT EXISTING RCP IN PLACE. CONNECT PROPOSED 18" RCP TO EXISTING 18" RCP WITH CONCRETE PIPE COLLAR PER DETAIL "A" THIS SHEET. SEE TRENCH DETAIL SHEET SD-1.
12. CONSTRUCT TYPE "CM2" DROP INLET (L=10.0') PER CCAUSD No. 412A.

BASIS OF BEARING

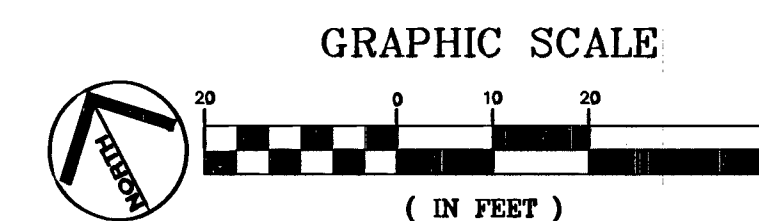
THE BASIS OF BEARINGS FOR THIS SURVEY IS GRID NORTH AS DEFINED BY THE NORTH AMERICAN DATUM OF 1983 (NAD 83), NEVADA STATE PLANE EAST (2701) ZONE. SAID BEARINGS WERE DETERMINED BY STATIC GLOBAL POSITIONING SYSTEM (GPS) MEASUREMENTS PROCESSED BY THE NATIONAL GEODETIC SURVEY DIVISION OF THE NATIONAL OCEANIC AND ATMOSPHERIC ADMINISTRATION USING THE ON-LINE POSITIONING USER SERVICE (OPUS). THE REFERENCE FRAME USED WAS NAD83 (CORRS96) WITH AN EPOCH OF 2002.0000. ALL DISTANCES SHOWN HEREON ARE GROUND VALUES.

BENCHMARK

CITY OF LAS VEGAS VERTICAL CONTROL POINT "6C01 345W6", BEING A RIVET & PLATE IN TOP OF CURB ON THE EAST SIDE OF MAIN BETWEEN BONNEVILLE & GARCES @ LIGHT POLE.

ELEVATION: 2027.08 (FEET)
617.8544 (METERS)

CITY OF LAS VEGAS VERTICAL CONTROL DATED 09/2002 BASED UPON THE NORTH AMERICAN VERTICAL DATUM OF 1983 (NAVD 88).



APPROVED FOR CONSTRUCTION
Don Meade
LAS VEGAS VALLEY WATER DISTRICT ENGINEERING SERVICES MANAGER
DATE: 02/10/10 PROJECT No. 115404 ESM 018

811
know what's below
Call before you dig

SAFETY ALERT
Call Before You Overhead

CALL BEFORE YOU UNDERGROUND
Call before you UnderGround
1-702-432-5300
RETRAY AND RETRYAL STATE OF NEVADA

REVISIONS
DATE: 6/21/10
SHEET REPLACEMENT

DATE: FEBRUARY 2010
CHECKED BY: PM/AM
DESIGNED BY: TEA

SCALE (H): 1" = 20'
SCALE (V): 1" = 2'

Kimley-Horn and Associates, Inc.
Engineering, Planning, and Environmental Consultants
2080 E. Flamingo Road, Suite 210, Las Vegas, NV 89119
PH: (702) 734-4949 FAX: (702) 734-5686

DEPARTMENT OF PUBLIC WORKS

BONNEVILLE/CLARK
ONEWAY COUPLLET PHASE 1
IMPROVEMENT PLANS

SHEET: STORM DRAIN SHEET

PROJECT: 107V5201

DATE: 02/10/10

PROJECT No. 115404 ESM 018

ENGINEER: PETER N. MEYERHOFER
Exp: 12/31/11
CIVIL
Professional Seal No. 18093 (01/11)

SHEET NO. SD-01
SHEET 39 OF 91
107V5201

BID# 09.1730.37 REV.3

Apr 25, 2010 - 5:09pm - USER: peter.meyerhofer
\\LAV\p01\Projects\1AV_Public\Trans\0922256\019_Bonneville-Clark\2008\CADD\20601019-01_03.dwg

124528