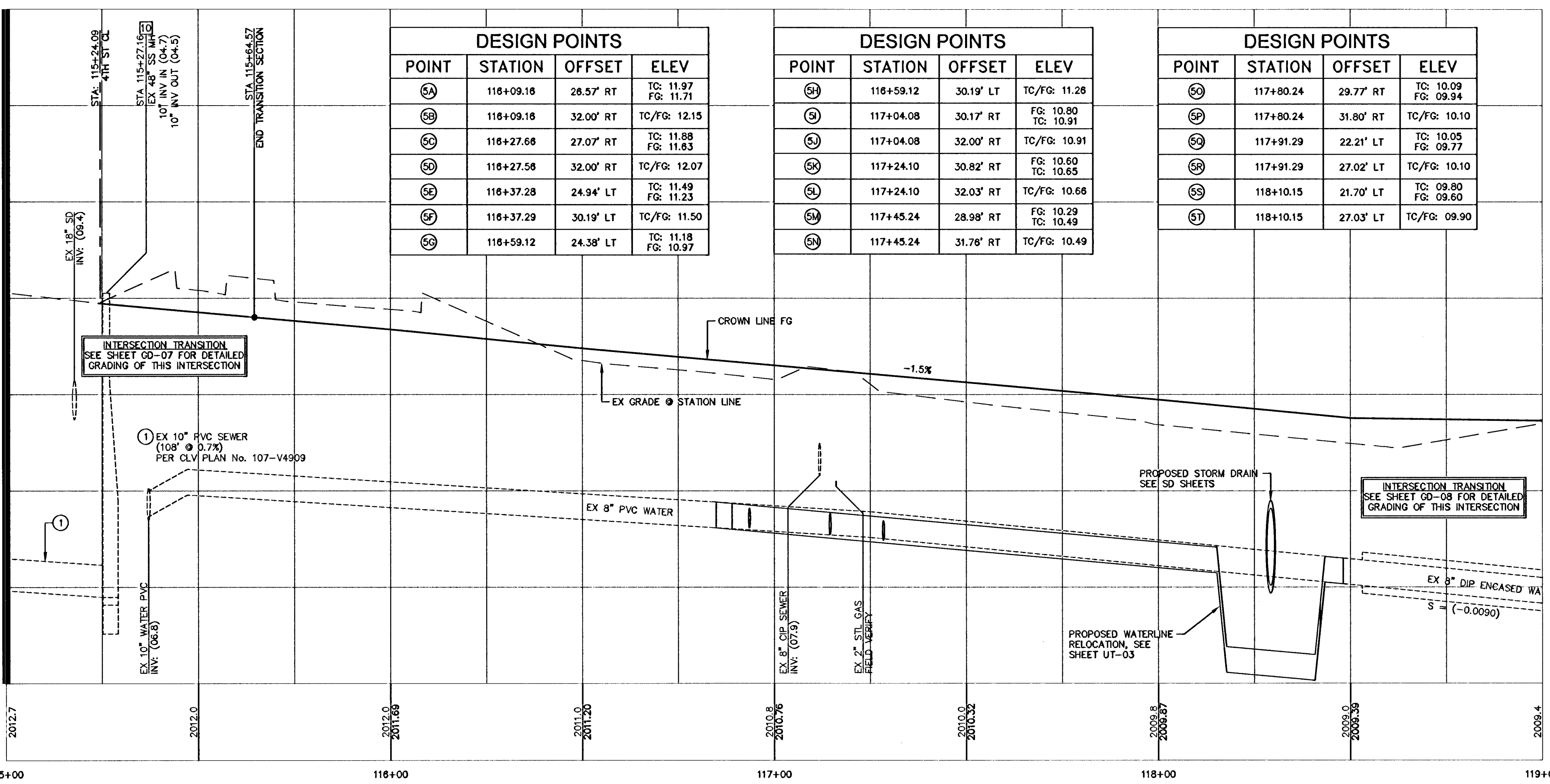
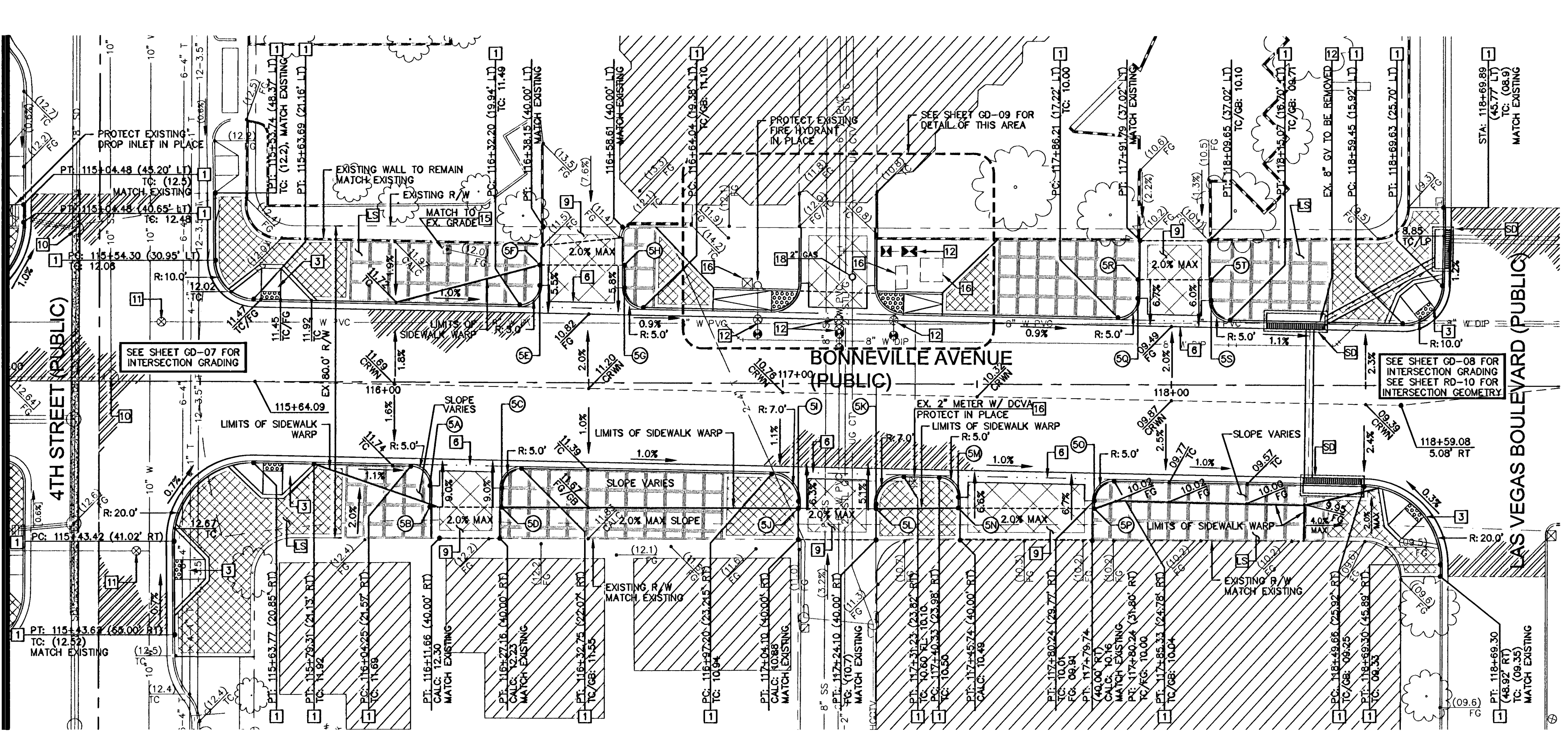


MATCHLINE ~ STA 115+00  
SEE SHEET RD-04

MATCHLINE ~ STA 115+00  
SEE SHEET RD-04

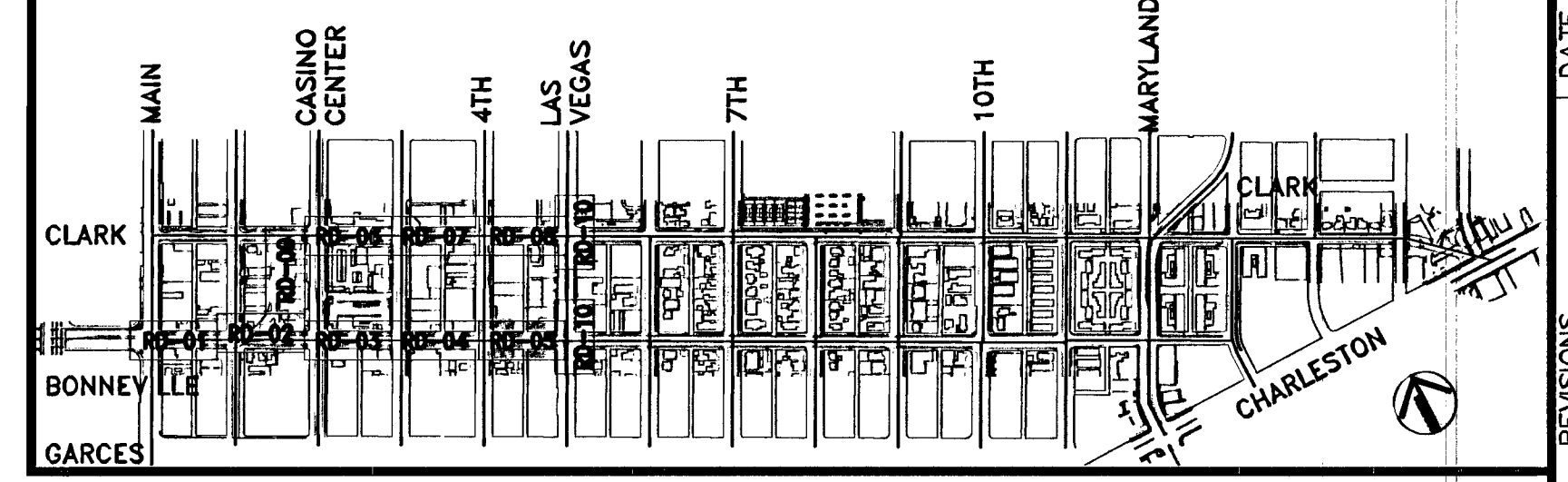


DESIGN POINTS			
POINT	STATION	OFFSET	ELEV
54	116+09.16	28.57' RT	TC: 11.97 FG: 11.71
55	116+09.16	32.00' RT	TC/FG: 12.15
56	116+27.66	27.07' RT	TC: 11.88 FG: 11.83
57	116+27.66	32.00' RT	TC/FG: 12.07
58	116+37.28	24.94' LT	TC: 11.49 FG: 11.23
59	116+37.28	30.19' LT	TC/FG: 11.50
60	116+59.12	24.38' LT	TC: 11.18 FG: 10.97

DESIGN POINTS			
POINT	STATION	OFFSET	ELEV
61	116+59.12	30.19' LT	TC/FG: 11.28
62	117+04.08	30.17' RT	FG: 10.80 TC: 10.91
63	117+04.08	32.00' RT	TC/FG: 10.91
64	117+24.10	30.82' RT	FG: 10.60 TC: 10.65
65	117+24.10	32.03' RT	TC/FG: 10.66
66	117+45.24	28.98' RT	FG: 10.29 TC: 10.49
67	117+45.24	31.78' RT	TC/FG: 10.49

DESIGN POINTS			
POINT	STATION	OFFSET	ELEV
68	117+80.24	29.77' RT	TC: 10.09 FG: 09.94
69	117+80.24	31.80' RT	TC/FG: 10.10
70	117+91.29	22.21' LT	TC: 10.05 FG: 09.77
71	117+91.29	27.02' LT	TC/FG: 10.10
72	118+10.15	21.70' LT	TC: 09.80 FG: 09.60
73	118+10.15	27.03' LT	TC/FG: 09.90

CROWN LINE PROFILE



KEY MAP

CONSTRUCTION NOTES

- 1 ASPHALTIC CONCRETE PAVEMENT SECTION. (SEE TY SHEETS FOR APPLICABLE STRUCTURAL SECTION)
- 2 CONCRETE PAVEMENT SECTION PER CCAUSD No. 230, 231, AND 232.. (SEE TY SHEETS FOR APPLICABLE STRUCTURAL SECTION)
- 3 CONCRETE SIDEWALK SECTION PER CCAUSD No. 234 AND TY SHEETS. (SEE LA SHEETS FOR SCORING PATTERN AND LIMITS OF PAVERS).
- 4 CONSTRUCT STORM DRAIN IMPROVEMENTS. SEE SHEET SD SHEETS FOR DESIGN AND ANNOTATION.
- 5 CONSTRUCT "L" TYPE CURB AND GUTTER PER CCAUSD No. 216.
- 6 CONSTRUCT "A" TYPE CURB PER CCAUSD No. 219 AND TYPICAL SECTIONS.
- 7 CONSTRUCT MEDIAN TYPE "L" CURB AND GUTTER PER CCAUSD No. 219.
- 8 CONSTRUCT MODIFIED CASE II SIDEWALK RAMP PER DETAIL 1, SHEET DT-1.
- 9 CONSTRUCT CASE I SIDEWALK RAMP PER CCAUSD No. 235.
- 10 CONSTRUCT ADA YELLOW TACTILE DOME INDICATOR PER LIMITS SHOWN ON PLANS.
- 11 INSTALL 1 1/2" PARKING METER CONDUIT.
- 12 CONSTRUCT CONCRETE CROSS GUTTER (3") PER DETAIL, SHEET DT-1.
- 13 CONSTRUCT CONCRETE CROSS GUTTER (8") PER CCAUSD No. 228.
- 14 CONSTRUCT CONCRETE SIDEWALK PER CCAUSD No. 234.
- 15 INSTALL MULTI-BAY PARKING METER.
- 16 CONSTRUCT CONCRETE ALLEY/DRIVEWAY ENTRANCE PER DETAILS, SHEET DT-1.
- 17 ADJUST MANHOLE COLLAR AND RIM TO FINISH GRADE. (MANHOLES SHALL BE ACCESSIBLE THROUGHOUT CONSTRUCTION)
- 18 ADJUST WATER VALVE TO FINISH GRADE PER UDACS PLATE No. 8. (VALVES SHALL BE ACCESSIBLE THROUGHOUT CONSTRUCTION)
- 19 UTILITY DESIGN MODIFICATION. SEE UT SHEETS FOR DESIGN AND ANNOTATION
- 20 ADJUST EXISTING UTILITY BOX TO FINISH GRADE
- 21 ADJUST EXISTING BLOW OFF VALVE TO FINISH GRADE PER UDACS PLATE No. 4A. (VALVE SHALL BE ACCESSIBLE THROUGHOUT CONSTRUCTION)
- 22 PROTECT EXISTING UTILITY IN PLACE DURING CONSTRUCTION
- 23 ADJUST EXISTING WATER METER AND DCVA/DCDA/RPPA TO FINISH GRADE PER UDACS PLATE No. 1 AND PLATE No. 11A
- 24 CONSTRUCT PCC MEDIAN ISLAND PER CCAUSD No. 218
- 25 UTILITY TEST HOLE (POTHOLE)
- 26 SIDEWALK UNDERDRAIN MODIFICATION
- 27 CONSTRUCT RESIDENTIAL DRIVEWAY PER CCAUSD No. 223
- 28 CONSTRUCT CONCRETE BUS PAD PER DETAIL SHEET DT-01.
- 29 CONSTRUCT MODIFIED "A" TYPE CURB PER DETAIL ON SHEET DT-01.

GENERAL NOTES

1. ALL STATIONS AND OFFSETS ARE BASED ON CONTROL LINE. EXISTING CONTROL LINE PROFILE IS FOR INFORMATIONAL PURPOSES ONLY.
2. ELEVATIONS, OFFSETS AND GRADES ARE AT BACK OF CURB UNLESS OTHERWISE NOTED.
3. SEE HC SHEETS FOR CONTROL LINE INFORMATION, BENCHMARK, AND BASIS OF BEARING.
4. ALL EXISTING UTILITY LOCATIONS SHOWN HEREIN ARE APPROXIMATE ONLY. IT SHALL BE THE CONTRACTOR'S RESPONSIBILITY TO DETERMINE THE EXACT VERTICAL AND HORIZONTAL LOCATION OF ALL EXISTING UNDERGROUND UTILITIES PRIOR TO COMMENCING CONSTRUCTION. NO REPRESENTATION IS MADE THAT ALL UTILITIES ARE SHOWN HEREON. THE ENGINEER ASSUMES NO RESPONSIBILITY FOR UTILITIES NOT SHOWN OR UTILITIES NOT SHOWN IN THEIR PROPER LOCATION.
5. CONTRACTOR TO FIELD VERIFY EXISTING SANITARY SEWER AND STORM DRAIN INVERT ELEVATIONS PRIOR TO CONSTRUCTION AND NOTIFY THE ENGINEER OF ANY DISCREPANCIES.
6. ALL MANHOLES, VALVES, VAULTS, ETC. LOCATED WITHIN THE LIMITS OF CONSTRUCTION SHALL BE ADJUSTED TO FINISHED GRADE.

BASIS OF BEARING

THE BASIS OF BEARINGS FOR THIS SURVEY IS GRID NORTH AS DEFINED BY THE NORTH AMERICAN DATUM OF 1983 (NAD 83), NEVADA STATE PLANE EAST (2701) ZONE. SAID BEARINGS WERE DETERMINED BY STATIC GLOBAL POSITIONING SYSTEM (GPS) MEASUREMENTS PROCESSED BY THE NATIONAL GEODETIC SURVEY DIVISION OF THE NATIONAL OCEANIC AND ATMOSPHERIC ADMINISTRATION USING THE ON-LINE POSITIONING USER SERVICE (OPUS). THE REFERENCE FRAME USED WAS NAD83 (COR598) WITH AN EPOCH OF 2002.0000. ALL DISTANCES SHOWN HEREON ARE GROUND VALUES.

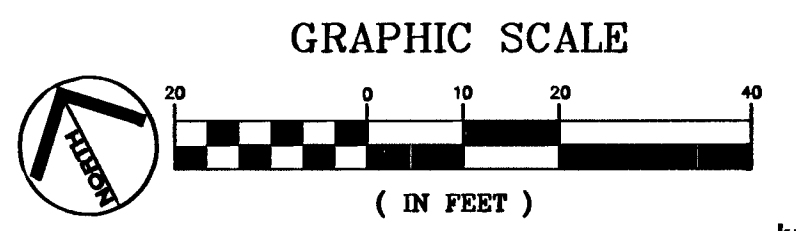
BENCHMARK

CITY OF LAS VEGAS VERTICAL CONTROL POINT "6001 34SW6", BEING A RIVET & PLATE IN TOP OF CURB ON THE EAST SIDE OF MAIN BETWEEN BONNEVILLE & GARCES @ LIGHT POLE.  
ELEVATION: 2027.08 (FEET)  
617.8544 (METERS)  
CITY OF LAS VEGAS VERTICAL CONTROL DATED 06/2002 BASED UPON THE NORTH AMERICAN DATUM OF 1988 (NAVD 88).

CALL SOUTHWEST GAS at 365-2296 for Standby when excavating over or near HIGH PRESSURE GAS LINES

APPROVED FOR CONSTRUCTION

*Don Hrade*  
LAS VEGAS VALLEY WATER DISTRICT ENGINEERING SERVICES MANAGER  
DATE 06/10/10 PROJECT No. 115404 ESN 018



**SAFETY ALERT**  
Call Before You Dig  
Call before you dig  
Underground  
1-702-432-5300

REVISIONS

NO.	DATE	DESCRIPTION

DATE: FEBRUARY 2010  
CHECKED BY: CC/PM  
DESIGNED BY: TEA  
DRAWN BY: ALK

**Kimley-Horn and Associates, Inc.**  
Engineering, Planning and Environmental Consultants  
2060 E. Flamingo Road, Suite 210, Las Vegas, NV 89119  
PH: (702) 734-6666 FAX: (702) 734-4949

**DEPARTMENT OF PUBLIC WORKS**

BONNEVILLE/CLARK ONEWAY COUPLER PHASE 1 IMPROVEMENT PLANS

BONNEVILLE AVENUE - PLAN & PROFILE SHEET

PROJECT: BONNEVILLE/CLARK ONEWAY COUPLER PHASE 1 IMPROVEMENT PLANS

ENGINEER: *Don Hrade*  
PEL: *Don Hrade*  
MEYERHOFER  
Exp: 12/31/11  
CIVIL  
No. 18093  
10/10/09

SHEET NO. RD-05  
SHEET 21 OF 91  
DRAWING NO. 107V5201

BID# 09-1730-37 REV 3

124510

Apr 25, 2010 - 7:06pm - USER: patermanj@nvd.com  
\\nvd\proj\Projects\LA\Projects\1072256\019\_Bonneville-Clark\_2008\CADD\25601ser-01\_08.dwg